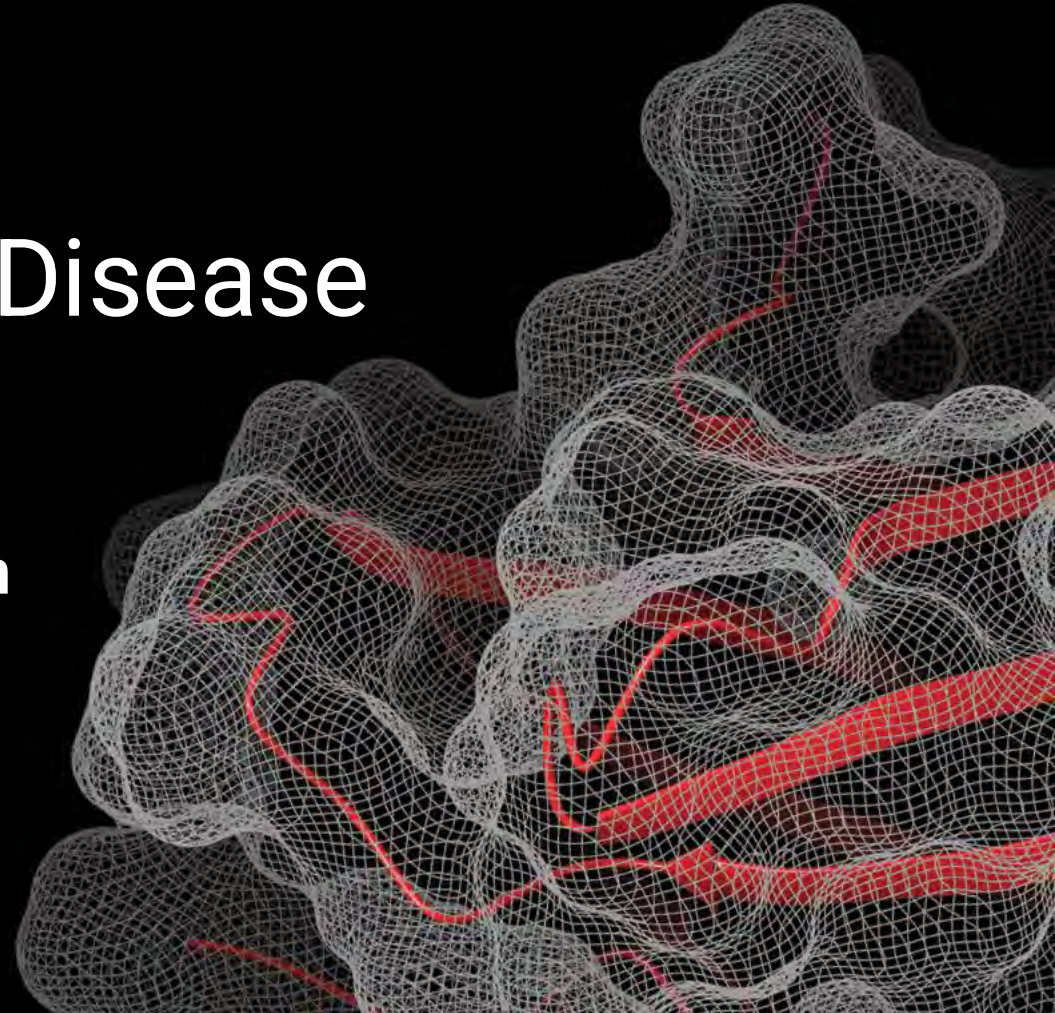




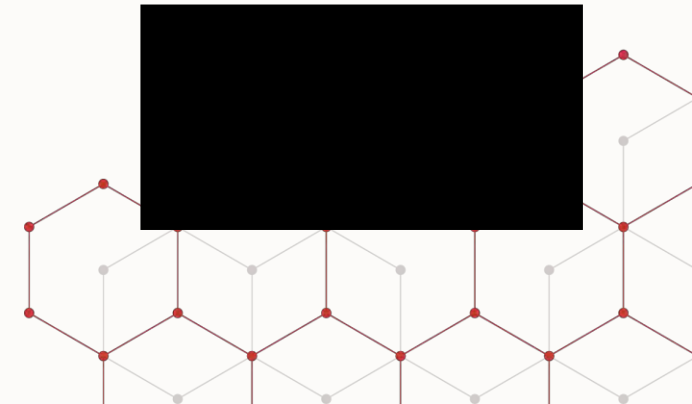
Decoding the **Structure** of Disease

**Revealing The Hidden Shapes Of Proteins In
Diseases For First-in-class Therapies**



Company Overview

- We are pioneering a new field called **Structural Surfaceomics** — the ability to map the real 3D structures of cell-surface proteins directly from patient samples.
- Using **proprietary datasets and custom AI stack**, we uncover a **new class of targets** and design therapeutics with **unmatched precision and therapeutic index**.
- We are rapidly advancing internal **preclinical pipeline** in oncology and **partnerships with several global pharmaceutical companies**.



Current Drug Targets are Suboptimal

Most targets overlap with healthy tissues which becomes a liability in clinic

Herding in pharma: Most companies go after the same few targets

80%

fail due to toxicity or lack of efficacy¹

9

assets per target in oncology²

There is a clear need for novel, disease-specific targets



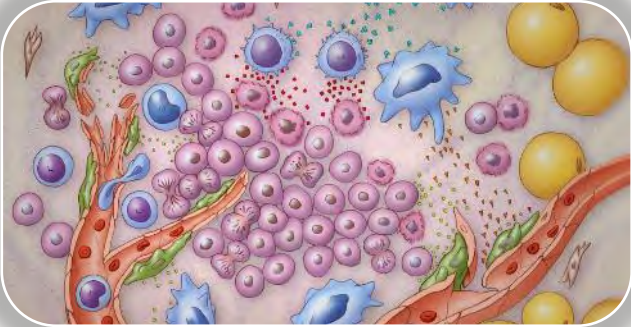
→ Illuminating the Unknown

Uncovering A Hidden Universe of New Targets

We're pioneering Surface Protein Conformers (SPC) as a new class of disease-specific targets

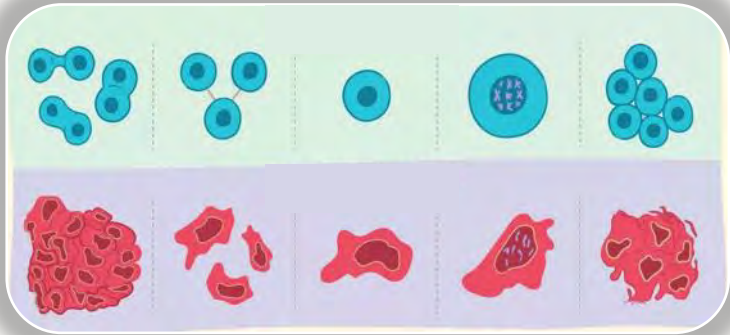


Disease is Inherently Non-Native



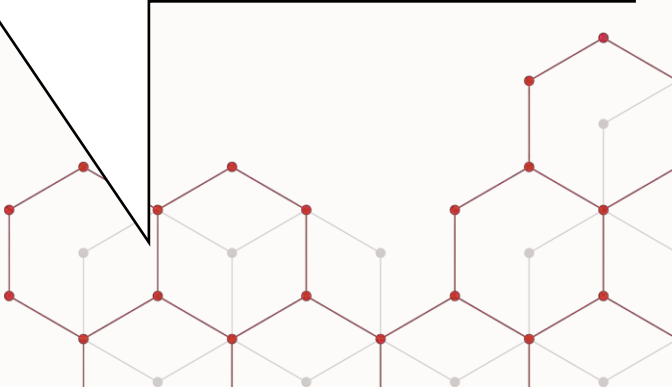
Pathology creates a divergent microenvironment:
Hypoxia
Second Messenger Signaling
↑ Lactate generation

Diseased cells adopt distinct morphologies



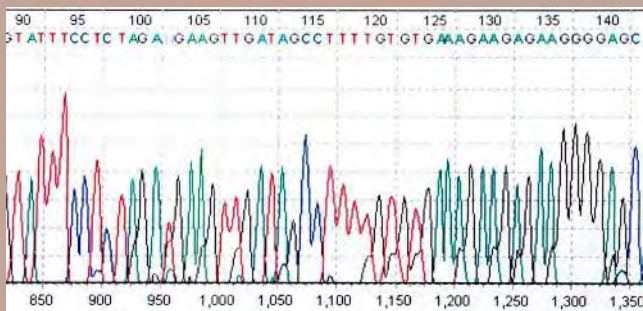
Diseased tissues can harbor abnormal structures, such as increased stroma, glands, or vasculature

These changes are likely to have a **structural** component driven by protein conformation



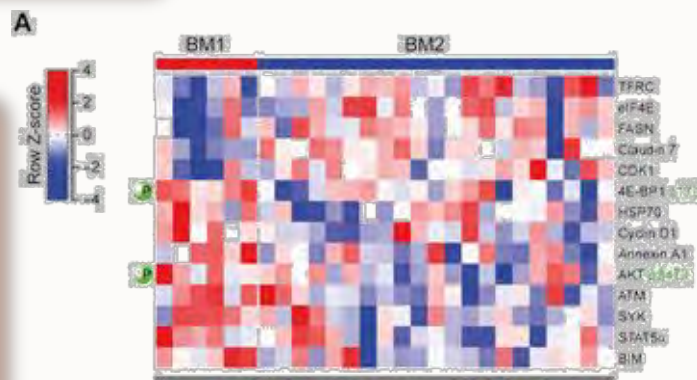
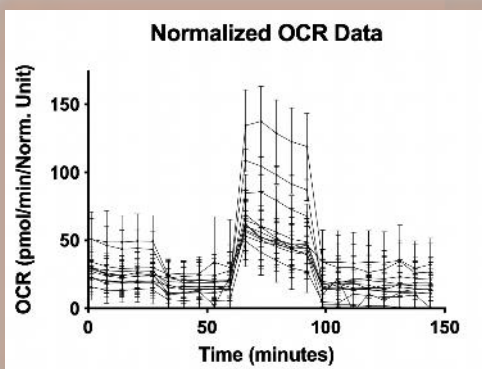
Conventional Target Discovery is Missing Structure

For the past few decades, research has relied on -omic data to identify novel targets



Genomics

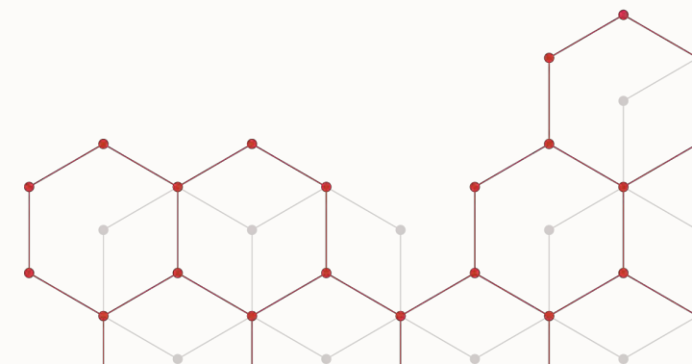
Metabolomics



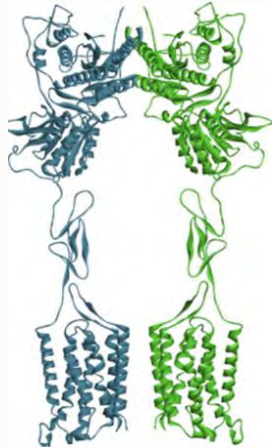
Proteomics

Surface Protein Conformer (SPC) targets are **invisible** to conventional -omic approaches

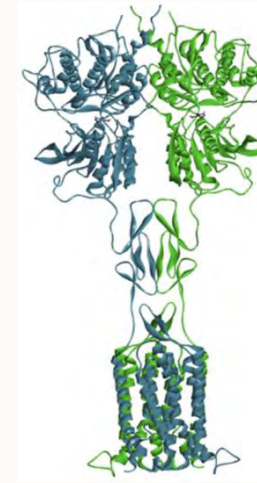
- Not differentially expressed
- Not mutant
- The **only** targetable characteristic is the **conformation**



Surface Protein Conformations (SPC)- a New Class of Drug Targets



Healthy/Resting Conformation



Pathologic/Active Conformation

● **Exceptional Specificity**

- Eliminate 'on target, off tumor' toxicity
- Allow higher dosing to maximize efficacy

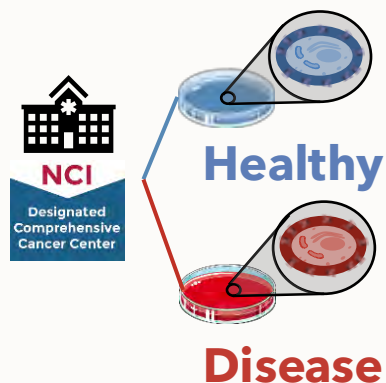
● **Invisible to standard target discovery approaches**

● **Evidence of these targets already exists in oncology indications**

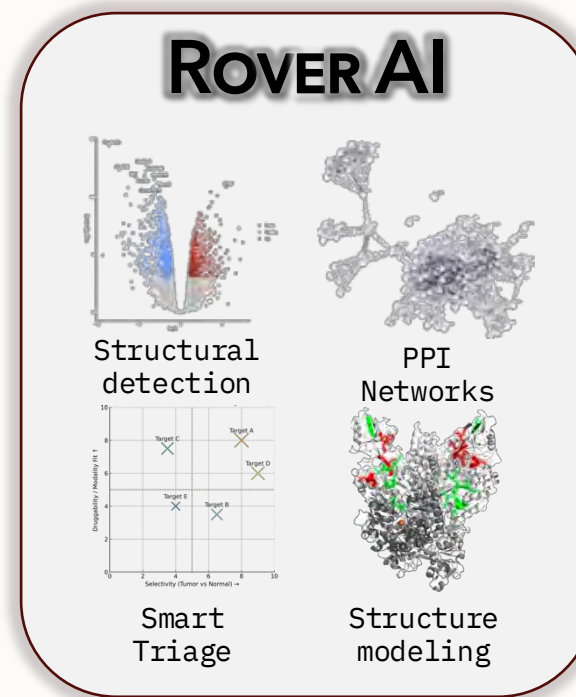


Rover AI™ Identifies **Novel Targets** by Integrating Proprietary Structural Data from **Living Models of Disease**

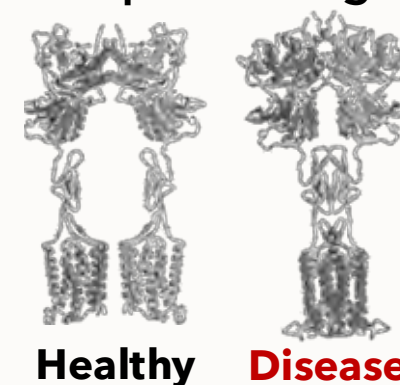
Patient-derived
Disease Models



Structural
Proteomics



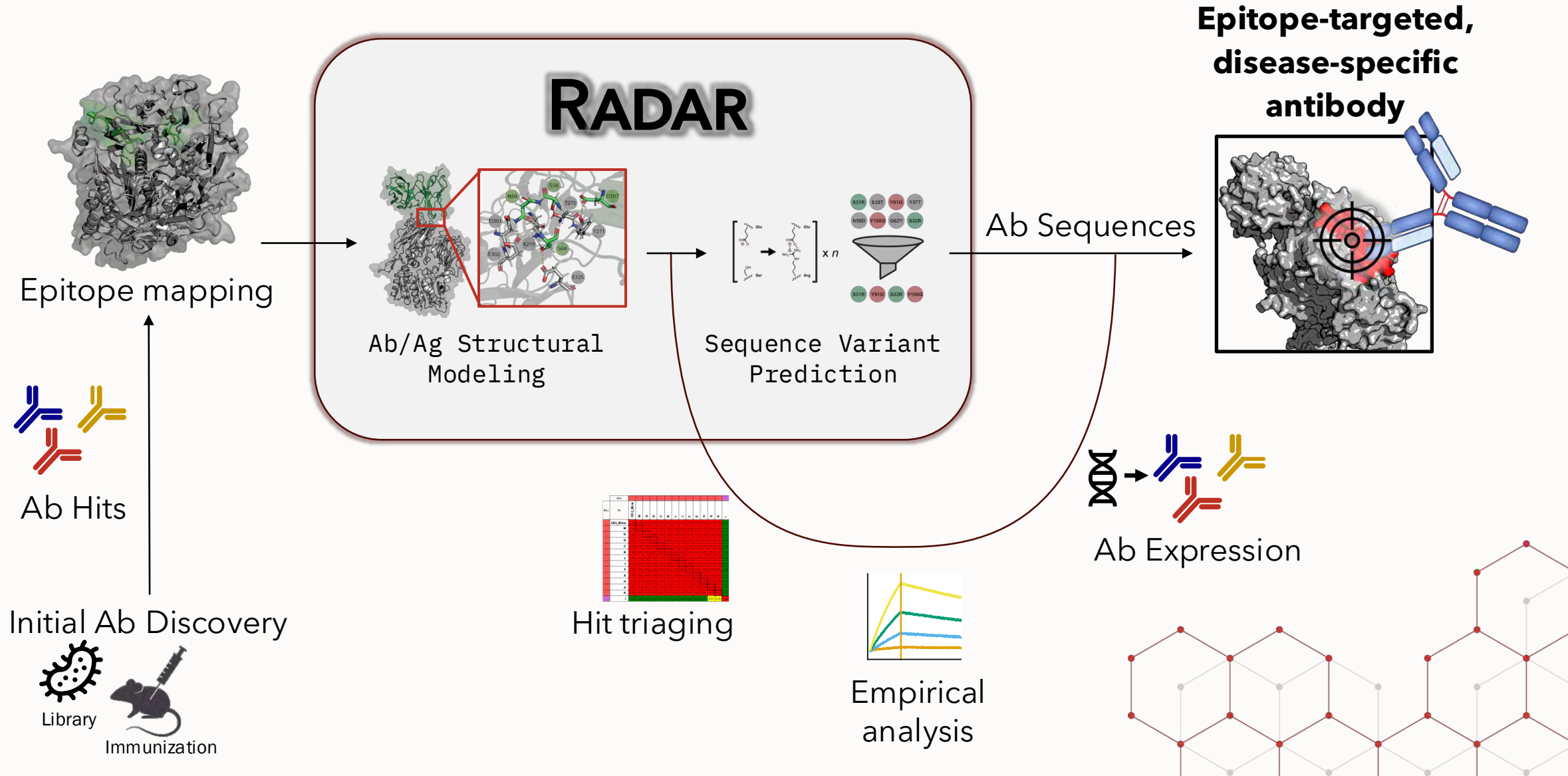
Novel Conformational
Therapeutic Target



- Rover AI™ is a generative deep learning model trained with unprecedented, proprietary data from living disease models
- Rover decodes protein conformational states in cancer tumors

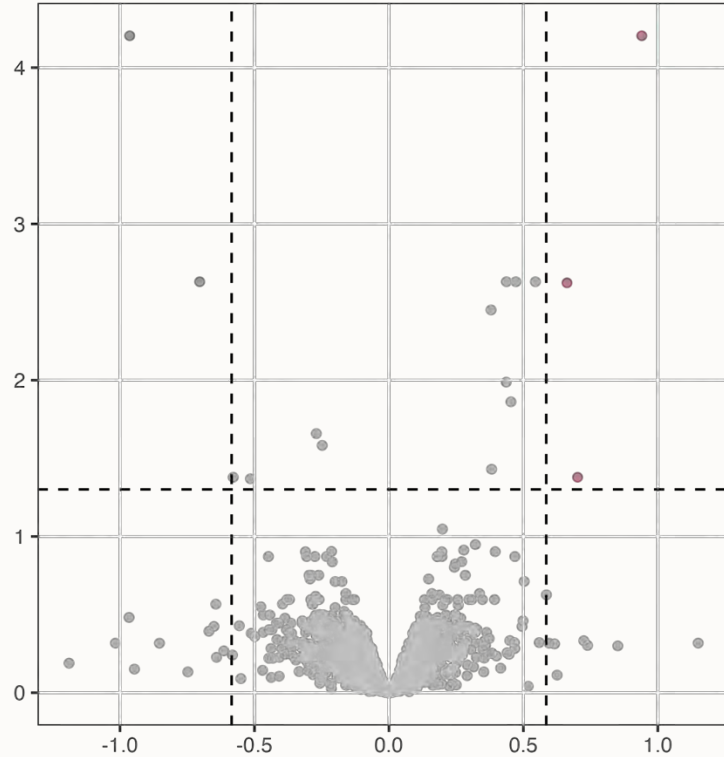


RADAR™: AI-Enabled Antibody Design for SPC Targets



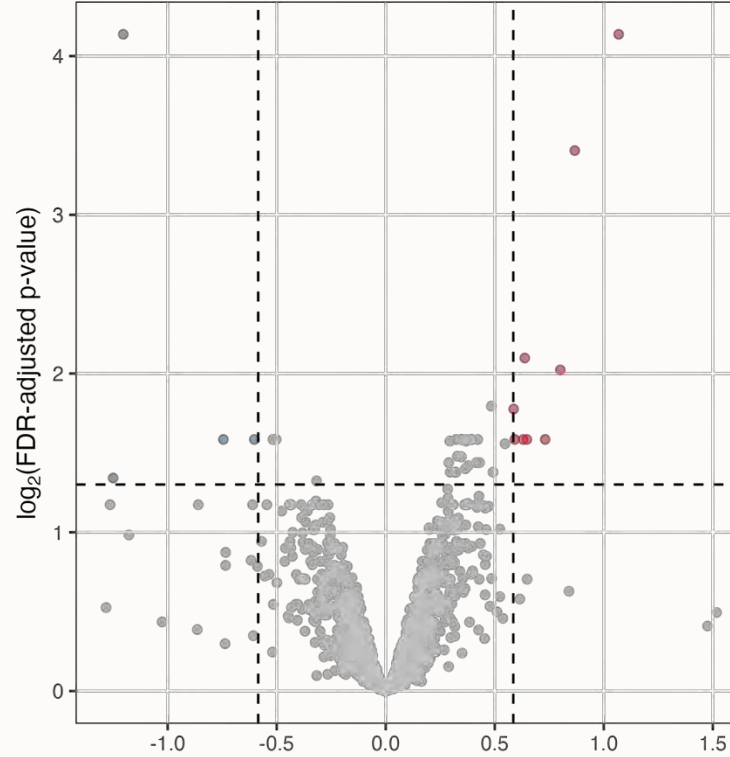
Unlocking a 10x Increase in Druggable Space

2506 quantifiable proteins
5 significantly changing



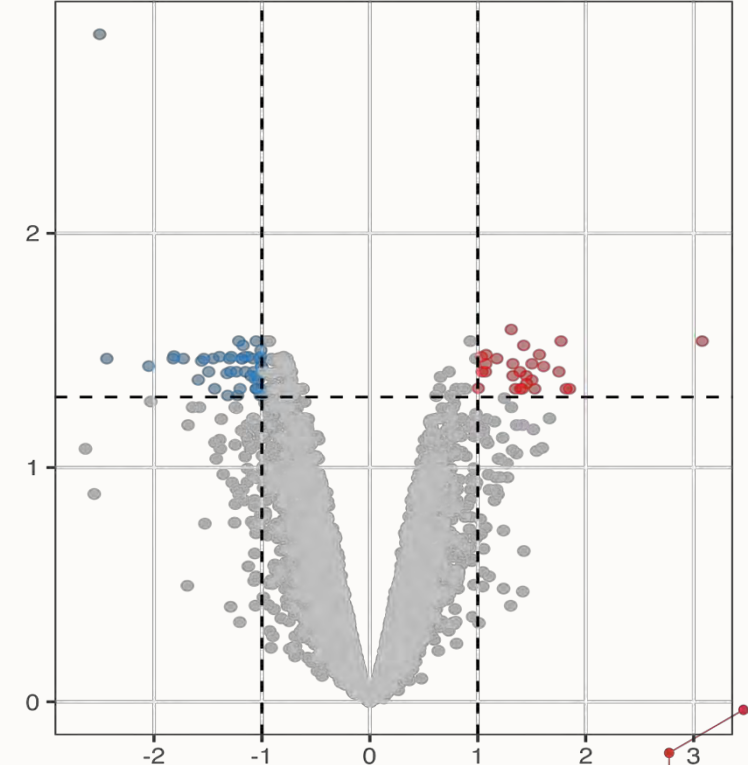
Conventional Proteomics

1526 quantifiable proteins
13 significantly changing











Conventional Surfaceomics

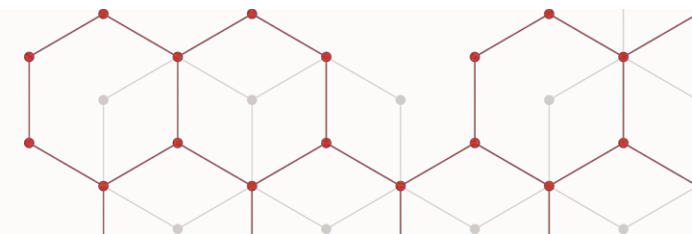
10235 modified peptides
187 significantly changing
129 proteins with ≥ 1 changing peptide



SPC Target Discovery

Therapeutic Pipeline

	Program	Partner	Indication	Discovery	Pre-Clinical	IND
Oncology 	IMTO-4842	Internal	r/r AML			
	IMTO-5727	Internal	Multiple Solid Tumors			
	-	 Daiichi-Sankyo	Solid Tumor			
	IMTO-3437	Internal	NSCLC			
Immunology 	-	Undisclosed	Undisclosed			



We are Biologists + Engineers + Explorers

MANAGEMENT



Faraz Choudhury, PhD
CEO

Co-founder of Immuto
PhD, UW Madison
Co-inventor of Immuto's core platform



Michael Sussman, PhD
Co-Founder

KOL and leading expert in protein biochemistry
Founder of NimbleGen (acquired by Roche)



Neal Goodwin, PhD
CSO

Co-founder and former CSO of ProNAi Therapeutics (Sierra Oncology; NASDAQ: SRRR; acquired by GSK).

ADVISORS

Discovery



Gavin Thurston, PhD
Former SVP of Oncology
Regeneron

IND/Regulatory



Ron Christopher, PhD,
DABT, FCP
30+ years of experience. >25
INDs, 4 NDAs, 3 MAAs

Clinical



Martin Carroll, MD
Professor of Medicine (Hematology-Oncology), UPenn
Leading Expert and KOL in AML

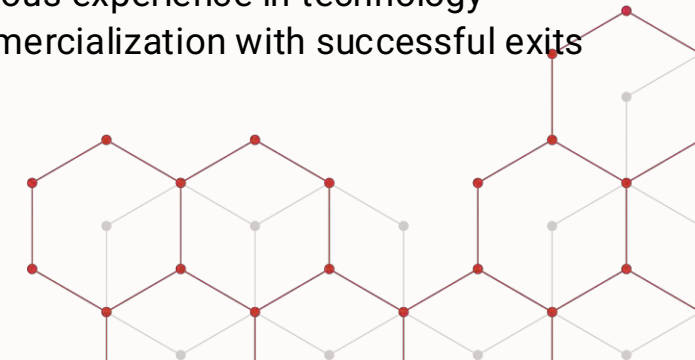
40+ YEARS INDUSTRY EXPERIENCE



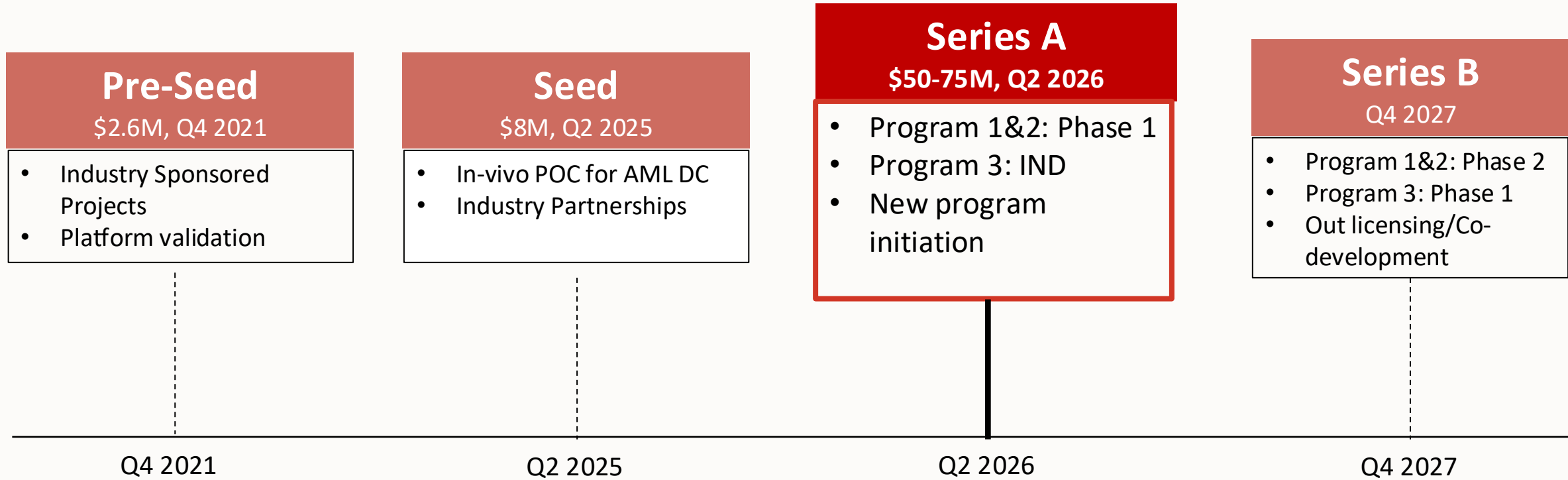
Inventors of the core technology and leading experts in oncology and antibody discovery



Previous experience in technology commercialization with successful exits



Financing



Investors





Immuto Scientific

→ Illuminating the Unknown

Faraz A Choudhury, PhD

CEO

faraz@immutoscientific.com

Cambridge, MA | Madison, WI

