



US008137924B2

(12) **United States Patent**  
**Chapman et al.**

(10) **Patent No.:** **US 8,137,924 B2**  
(45) **Date of Patent:** **Mar. 20, 2012**

(54) **METHOD AND COMPOSITIONS FOR  
DETECTING BOTULINUM NEUROTOXIN**

(75) Inventors: **Edwin R. Chapman**, Madison, WI  
(US); **Min Dong**, Madison, WI (US)

(73) Assignee: **Wisconsin Alumni Research  
Foundation**, Madison, WI (US)

(\*) Notice: Subject to any disclaimer, the term of this  
patent is extended or adjusted under 35  
U.S.C. 154(b) by 1249 days.

(21) Appl. No.: **11/014,845**

(22) Filed: **Dec. 20, 2004**

(65) **Prior Publication Data**

US 2006/0134722 A1 Jun. 22, 2006

**Related U.S. Application Data**

(60) Provisional application No. 60/579,254, filed on Jun.  
15, 2004, provisional application No. 60/530,645,  
filed on Dec. 19, 2003.

(51) **Int. Cl.**  
**G01N 33/554** (2006.01)  
**G01N 33/569** (2006.01)

(52) **U.S. Cl.** ..... **435/7.32**

(58) **Field of Classification Search** ..... 435/7.32  
See application file for complete search history.

(56) **References Cited**

**U.S. PATENT DOCUMENTS**

5,965,699	A	10/1999	Schmidt et al.	
6,504,006	B1	1/2003	Shine et al.	
7,183,066	B2 *	2/2007	Fernandez-Salas et al.	435/7.32
7,208,285	B2	4/2007	Fernandez-Salas	
2005/0100973	A1 *	5/2005	Steward et al.	435/7.32

**OTHER PUBLICATIONS**

Bark et al. (The Journal of Neuroscience, vol. 24, pp. 8796-8805, Oct.  
6, 2004).\*

Min Dong et al., "Using fluorescent sensors to detect botulinum  
neurotoxin activity in vitro and in living cells", PNAS, Oct. 12, 2004,  
vol. 101, pp. 14701-14706.

Christine Anne, et al., "High-Throughput Fluorogenic Assay for  
Determination of Botulinum Type B Neurotoxin Protease Activity",  
Analytical Biochemistry, 2001, pp. 253-261.

James J. Schmidt, et al., "High-Throughput Assays for Botulinum  
Neurotoxin Proteolytic Activity: Serotypes A, B, D, and F", Analyti-  
cal Biochemistry, 2001, pp. 130-137.

\* cited by examiner

*Primary Examiner* — Gary Nickol

*Assistant Examiner* — Khatol Shahnan-Shah

(74) *Attorney, Agent, or Firm* — Quarles & Brady LLP

(57) **ABSTRACT**

A molecular construct capable of fluorescent resonance  
energy transfer (FRET), comprising a linker peptide, a donor  
fluorophore moiety and an acceptor fluorophore moiety,  
wherein the linker peptide is a substrate of a botulinum neu-  
rotoxin selected from the group consisting of synaptobrevin,  
syntaxin and SNAP-25, or a fragment thereof capable being  
cleaved by the botulinum neurotoxin, and separates the donor  
and acceptor fluorophores by a distance of not more than 10  
nm, and wherein emission spectrum of the donor fluorophore  
moiety overlaps with the excitation spectrum of the acceptor  
fluorophore moiety; or wherein the emission spectra of the  
fluorophores are detectably different. Also provided are iso-  
lated nucleic acid expressing the construct, kits comprising  
said construct and cell lines comprising said nucleic acid.  
Further provided are methods of detecting a BoNT using the  
above described construct via FRET, and methods for detect-  
ing a BoNT using surface plasmon resonance imaging.

**13 Claims, 9 Drawing Sheets**

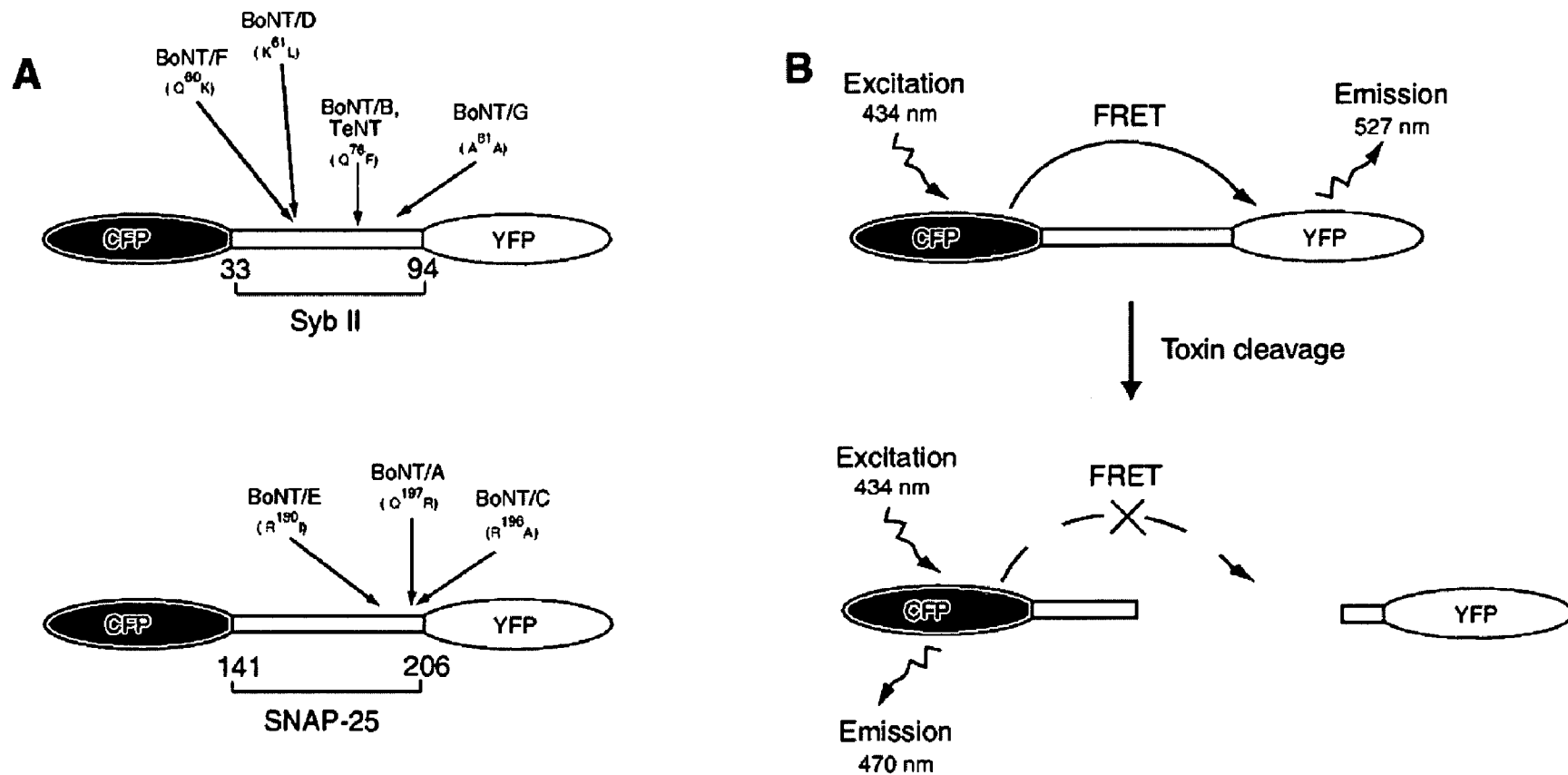


Figure 1

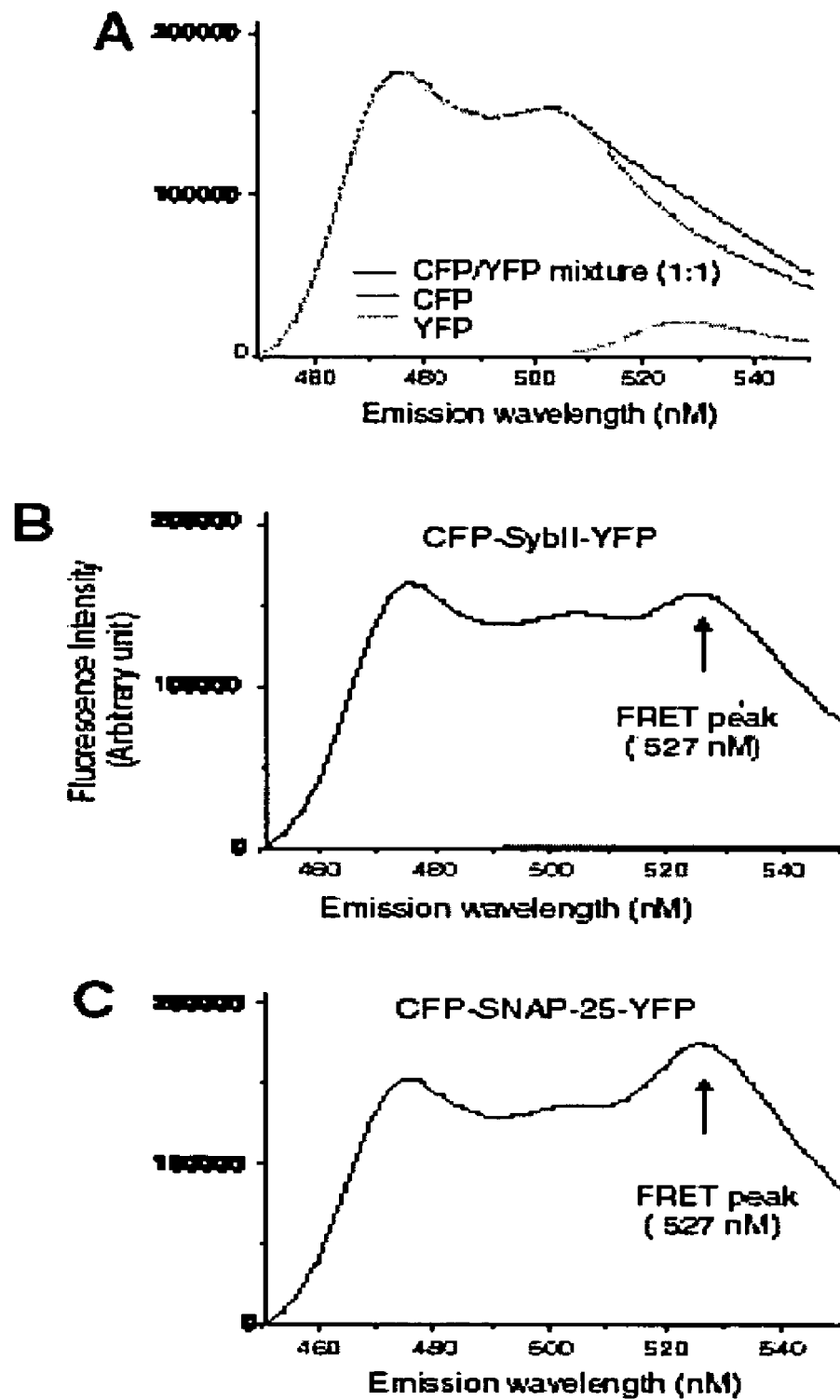


Figure 2

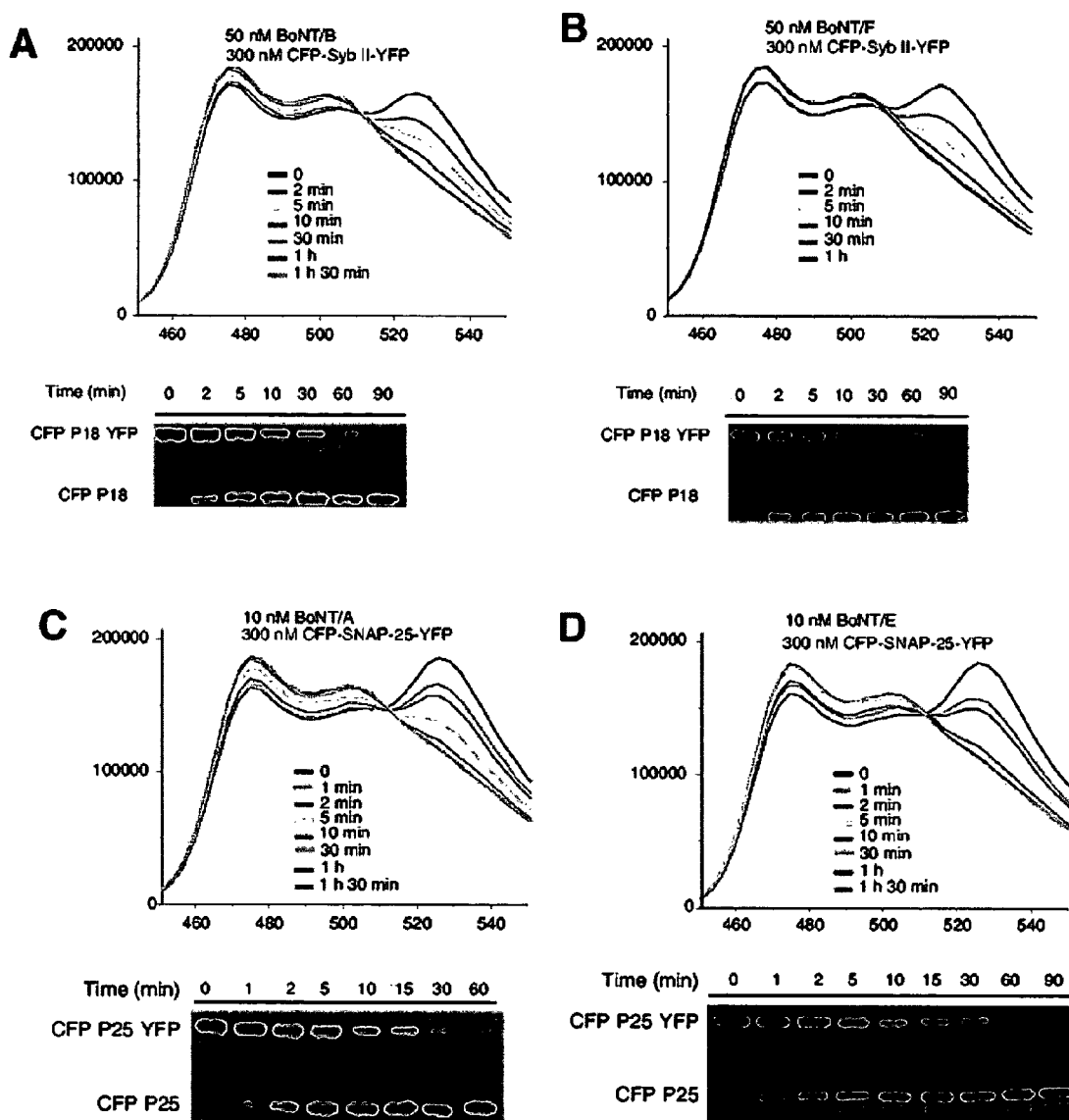


Figure 3

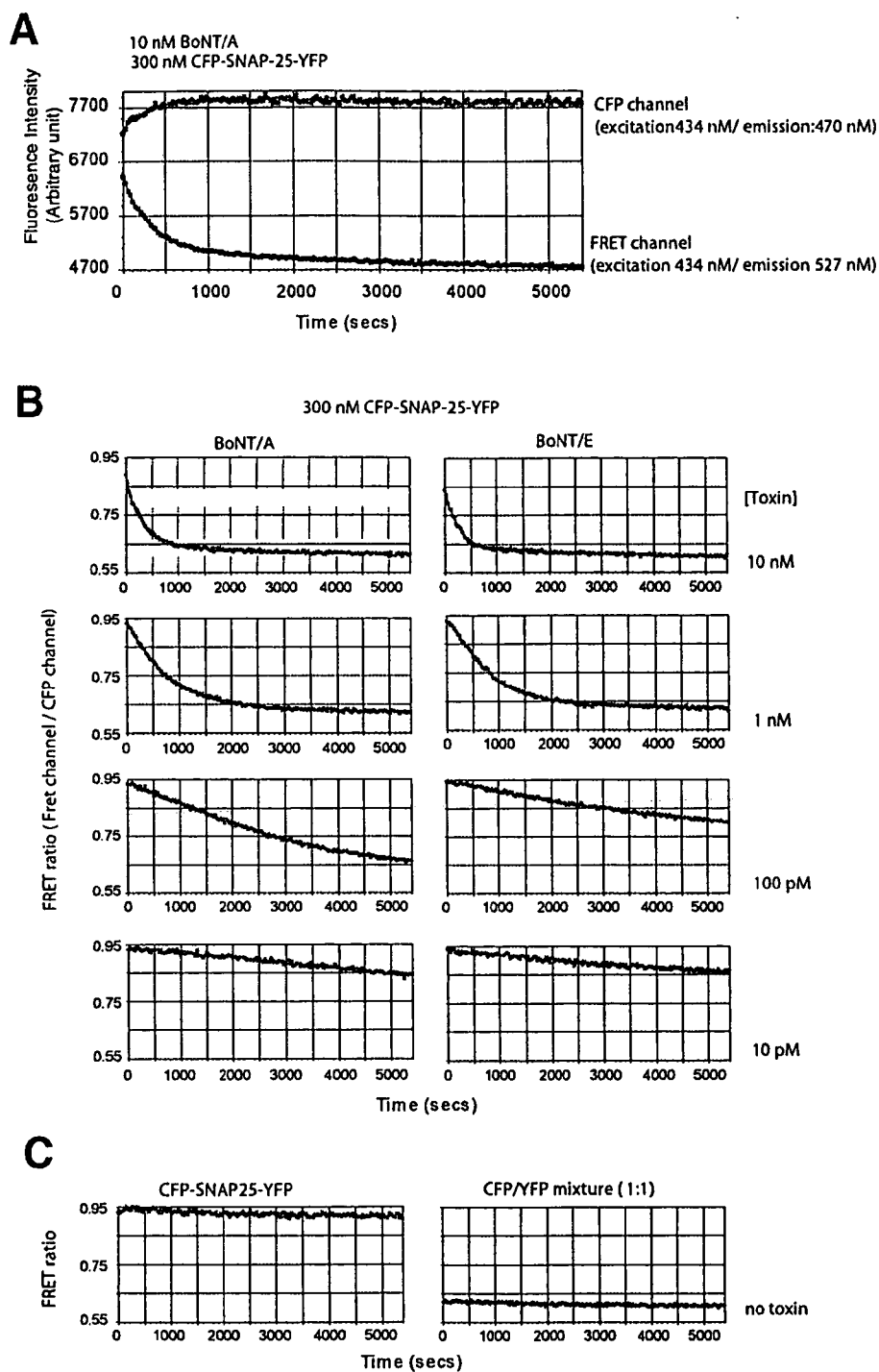
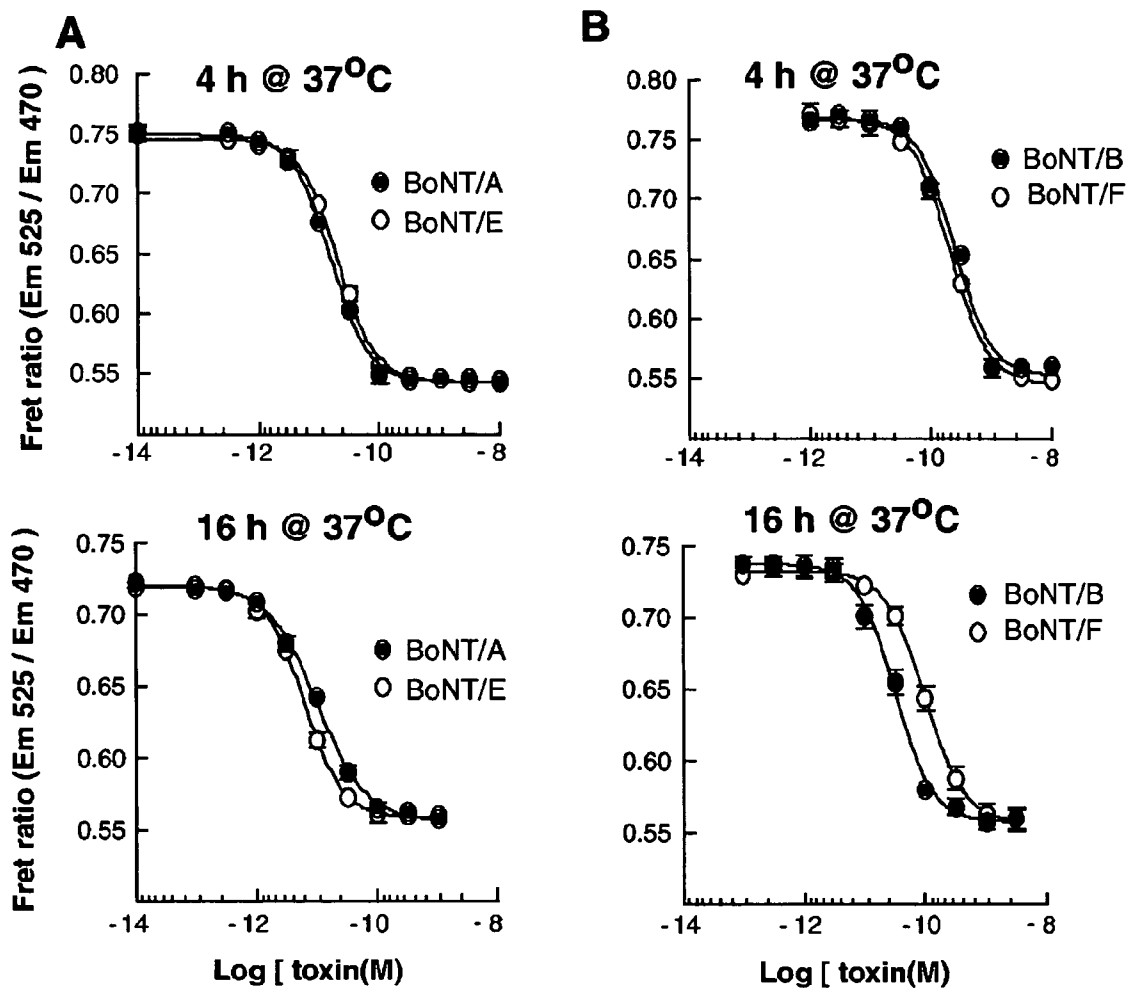


Figure 4



		4 h	16 h
EC50 :	BoNT/A	15 pM	10 pM
	BoNT/E	20 pM	6 pM
	BoNT/B	242 pM	32 pM
	BoNT/F	207 pM	98 pM

Figure 5

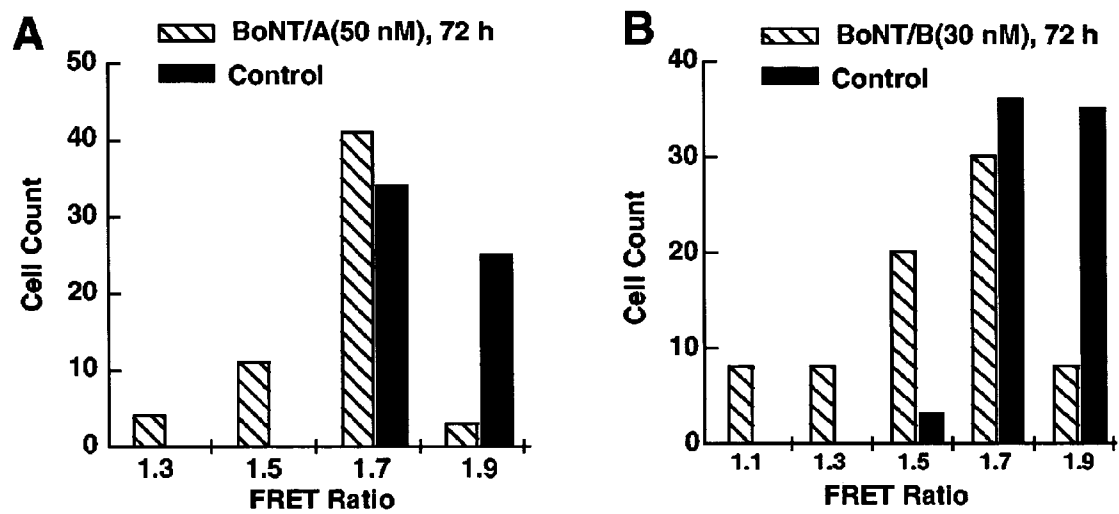


Figure 6

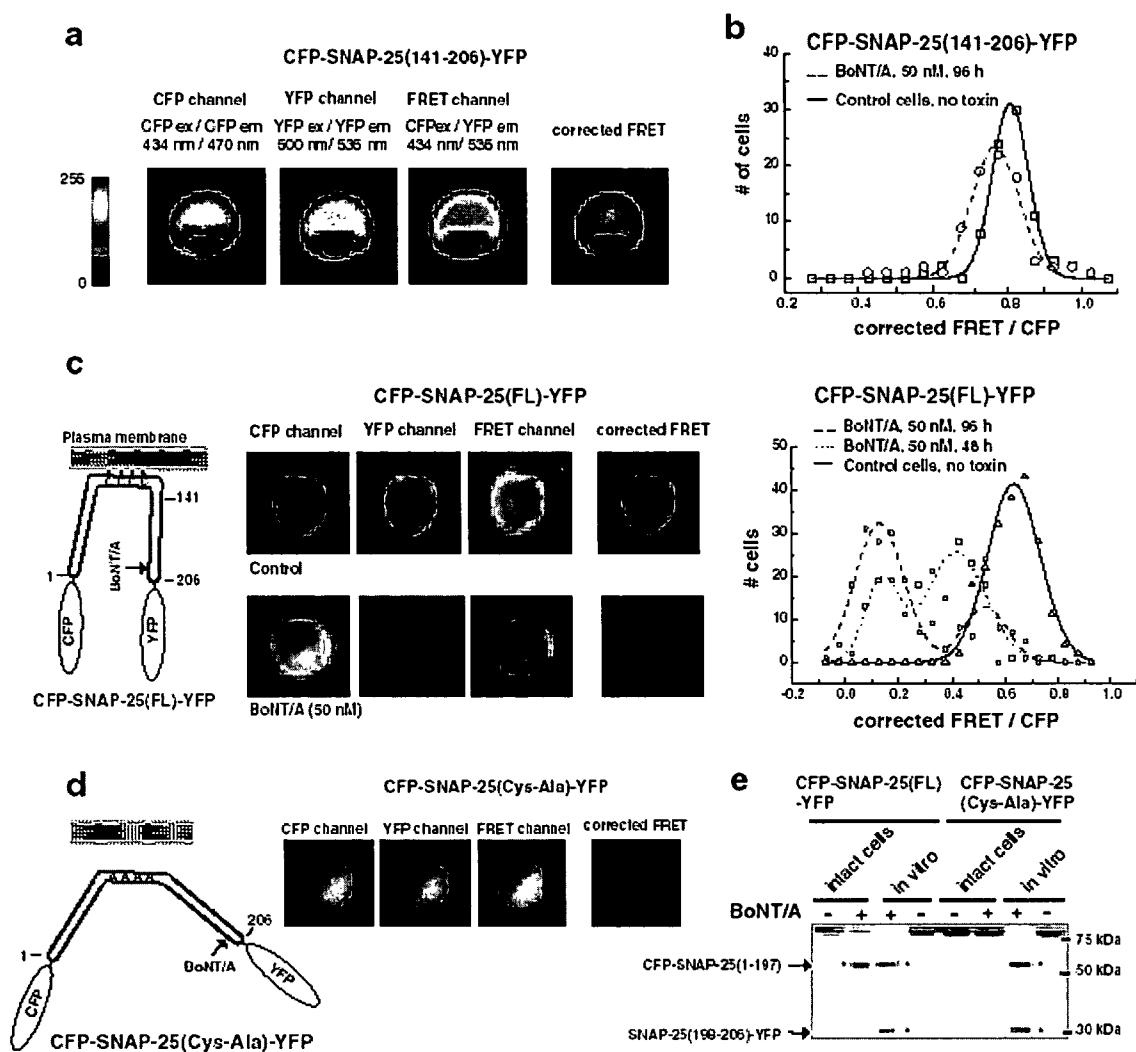


Figure 7



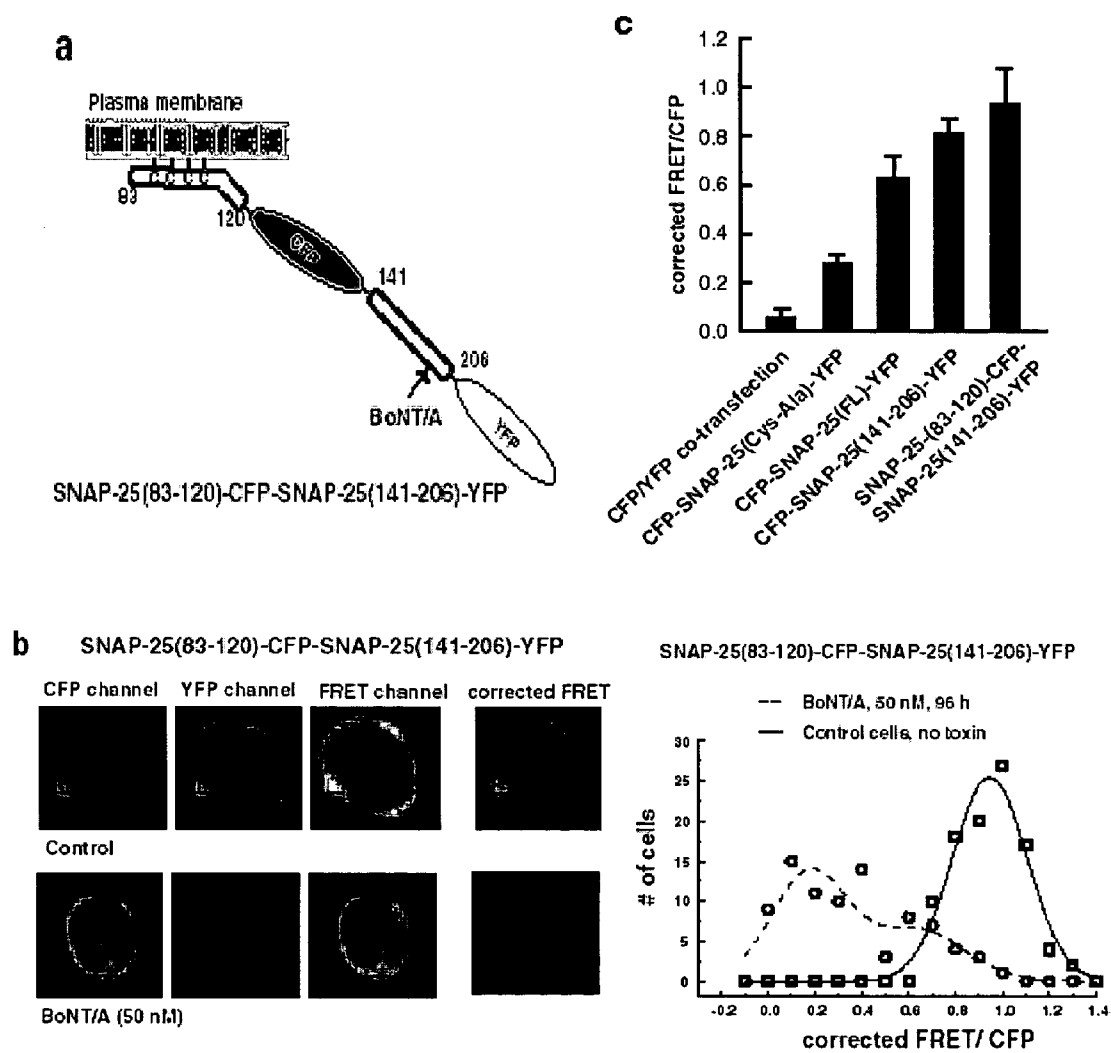


Figure 8

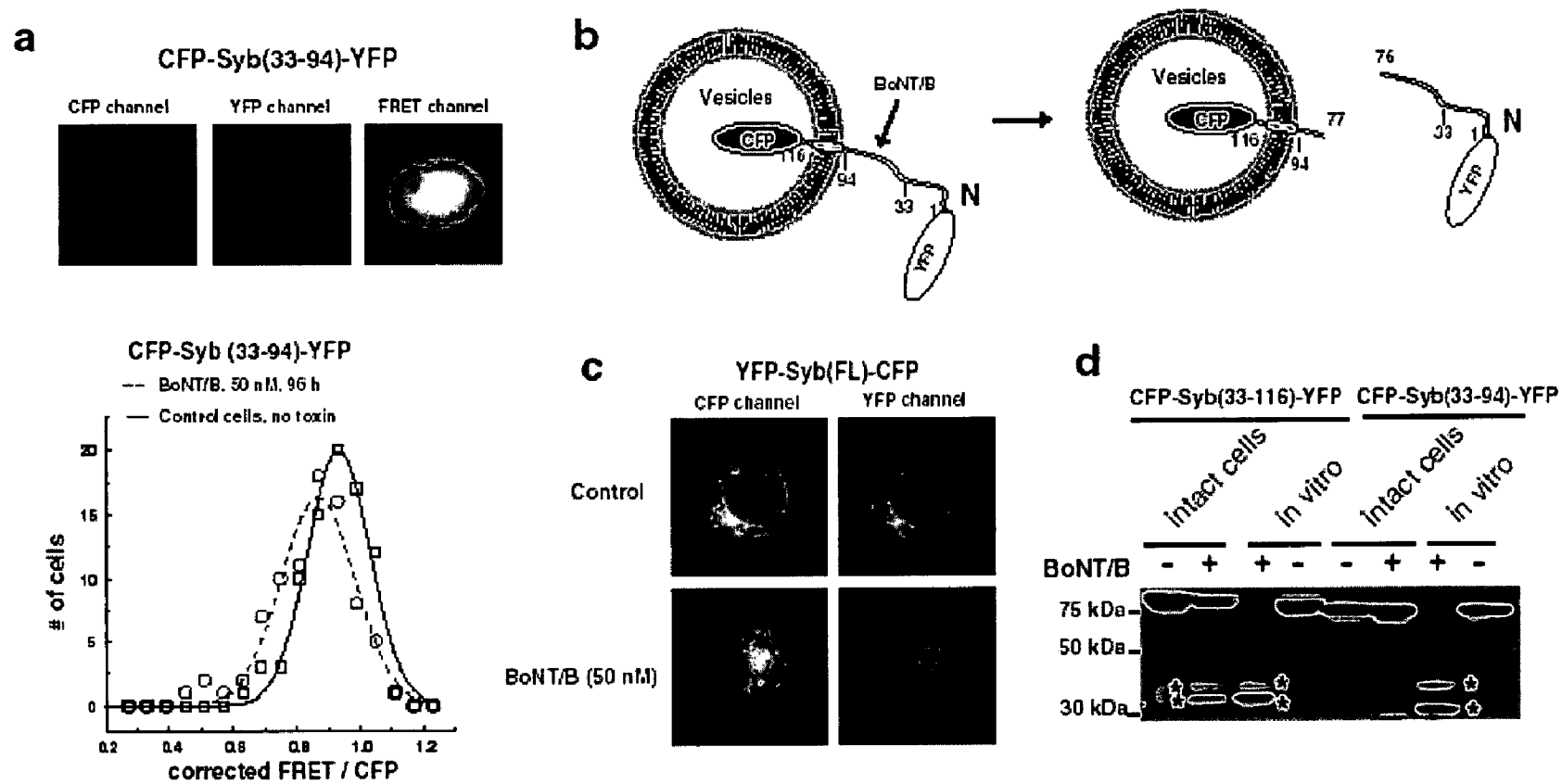


Figure 9

1

## METHOD AND COMPOSITIONS FOR DETECTING BOTULINUM NEUROTOXIN

### CROSS-REFERENCES TO RELATED APPLICATIONS

This application claims priority of U.S. Provisional Application Ser. No. 60/530,645, filed Dec. 19, 2003, and U.S. Provisional Application Ser. No. 60/579,254, filed Jun. 15, 2004. The contents of both provisional applications are incorporated herein by reference in their entirety.

### GOVERNMENT INTEREST

This invention was made with United States government support awarded by the National Institutes of Health under the grant numbers NIH GM56827 and MH061876. The United States has certain rights in this invention.

### BACKGROUND OF THE INVENTION

Botulinum neurotoxins (BoNTs) are produced by *Clostridium botulinum* and are the most potent toxins known. These toxins are a well-recognized source of food poisoning, often resulting in serious harm or even death of the victims. There are seven structurally related botulinum neurotoxins or serotypes (BoNT/A-G), each of which is composed of a heavy chain (~100 KD) and a light chain (~50 KD). The heavy chain mediates toxin entry into a target cell through receptor-mediated endocytosis. Once internalized, the light chain is translocated from endosomal vesicle lumen into cytosol, and acts as a zinc-dependent protease to cleave proteins that mediate vesicle-target membrane fusion ("substrate proteins"). Cleavage of SNARE proteins blocks vesicle fusion with plasma membrane and abolishes neurotransmitter release at neuromuscular junction.

These BoNT substrate proteins include plasma membrane protein syntaxin, peripheral membrane protein SNAP-25, and a vesicle membrane protein synaptobrevin (Syb). These proteins are collectively referred to as the SNARE (soluble N-ethylmaleimide-sensitive factor attachment protein receptor) proteins. Among the SNARE proteins, syntaxin and SNAP-25 usually reside on the target membrane and are thus referred to as t-SNAREs, while synaptobrevin is found exclusively with synaptic vesicles within the synapse and is called v-SNARE. Together, these three proteins form a complex that are thought to be the minimal machinery to mediate the fusion between vesicle membrane and plasma membrane. BoNT/A, E, and C<sup>1</sup> cleave SNAP-25, BoNT/B, D, F, G cleave synaptobrevin (Syb), at single but different sites. BoNT/C also cleaves syntaxin in addition to SNAP-25.

Botulinum neurotoxins are listed as a bioterror threat due to their extreme potency and the lack of immunity in the population. Because of their paralytic effect, low dose of botulinum neurotoxin has also been used effectively to treat certain muscle dysfunctions and other related diseases in recent years.

Due to their threat as a source of food poisoning, and as bioterrorism weapons, there is a need to sensitively and speedily detect BoNTs. Currently, the most sensitive method to detect toxins is to perform toxicity assay in mice. This method requires large numbers of mice, is time-consuming and cannot be used to study toxin catalytic kinetics. A number of amplified immunoassay systems based on using antibodies against toxins have also been developed, but most of these systems require complicated and expensive amplification process, and cannot be used to study toxin catalytic activity

2

either. Although HPLC and immunoassay can be used to detect cleaved substrate molecules and measure enzymatic activities of these toxins, these methods are generally time-consuming and complicated, some of them require specialized antibodies, making them inapplicable for large scale screening. Therefore, there is a need for new and improved methods and compositions for detecting BoNTs.

There is also a need for improved technique for screening for inhibitors of BoNTs. These inhibitors can be used as antidotes to the toxins for both preventive and treatment purposes.

Recently, a new approach based on intramolecular quenching of fluorogenic amino acid derivatives has been explored. In principle, two amino acid derivatives are used to replace two native amino acids in a very short synthetic peptide (20-35 amino acids) that containing toxin cleavage sites. The fluorescence signal of one amino acid derivative is quenched by another amino acid derivative when they are close to each other in the peptide. Cleavage of the peptide separates two amino acid derivatives and an increase in fluorescence signal can be detected (Schmidt J, Stafford R, *Applied and Environmental microbiology*, 69:297, 2003). This method has been successfully used to characterize a BoNT/B inhibitor. However, it requires synthesis of peptides with modified amino acid derivatives and is not suitable for use in living cells.

### SUMMARY OF THE INVENTION

In one embodiment, the present invention provides a molecular construct capable of fluorescent resonance energy transfer (FRET), comprising a linker peptide, a donor fluorophore moiety and an acceptor fluorophore moiety, wherein the linker peptide is a substrate of a botulinum neurotoxin selected from the group consisting of synaptobrevin, syntaxin and SNAP-25, or a fragment thereof that can be recognized and cleaved by the botulinum neurotoxin ("cleavable fragment"), and separates the donor and acceptor fluorophores by a distance of not more than 10 nm, and wherein emission spectrum of the donor fluorophore moiety overlaps with the excitation spectrum of the acceptor fluorophore moiety.

Preferably, the donor fluorophore moiety is a green fluorescent protein or a variant thereof, and the acceptor fluorophore moiety is a corresponding variant of the green fluorescent protein.

In one embodiment, the linker peptide comprises at least about 14 amino acid residues and an amino acid sequence selected from the group consisting of SEQ ID NOs: 1-6. In a preferred embodiment, the linker peptide comprises at least about 15, or at least about 16, or at least about 17, or at least about 18, or at least about 19, or at least about 20, or at least about 21, or at least about 22, or at least about 23, or at least about 24, or at least about 25, or at least about 26, or at least about 27, or at least about 28, or at least about 29 amino acid residues, and a sequence selected from the group consisting of SEQ ID NOs: 1-6.

In a preferred embodiment, the linker peptide comprises at least about 30 amino acid residues and an amino acid sequence selected from the group consisting of SEQ ID NOs: 1-6. More preferably, the linker peptide comprises at least about 35 amino acid residues, or at least about 40 amino acid residues, or at least about 45 amino acid residues, or at least about 50 amino acid residues. In a particularly preferred embodiment, a construct of the present invention comprises a linker peptide that comprises at least about 55 amino acid residues, or at least about 65 amino acid residues.

The present invention further provides an isolated polynucleotide molecule encoding a construct described above.

The construct is preferably an expression vector comprising the polynucleotide molecule operably linked to a promoter. A preferable promoter for the invention is an inducible promoter.

The present invention also provides a cell comprises an isolated polynucleotide molecule described above. In one embodiment, the cell is selected from the group consisting of a primary cultured neuron cell, PC12 cell or a derivative thereof, a primary cultured chromaphin cell, a neuroblastoma cell, a human adrenergic SK-N-SH cell, and a NS-26 cell line. Preferably, the cell is a cortical neuron cell, a hippocampal neuron cell, a spinal cord motor neuron cell, or a murine cholinergic Neuro 2a cell.

In a further embodiment, the present invention provides a kit which comprises a construct of the present invention in a suitable container.

Also disclosed herein is a method for detecting a botulinum neurotoxin, the method comprising providing a construct described hereinabove, wherein the linker is substrate protein or a fragment thereof corresponding to the botulinum neurotoxin to be detected, exposing the construct to a sample suspected of containing a botulinum neurotoxin under a condition under which the botulinum neurotoxin cleaves the protein substrate or a fragment thereof, and detecting and comparing the FRET signal before and after the construct is exposed to the sample, wherein a decrease in FRET indicates the presence of botulinum neurotoxin in the sample. In a preferred embodiment, additional  $Zn^{2+}$  is added to the sample to be detected. The method of the invention is suitable for the detection of a botulinum neurotoxin selected from the group consisting of BoNT/A, E, and C, and the corresponding substrate protein is SNAP-25 or a cleavable fragment thereof. The method of the present invention is also suitable for the detection of BoNT/B, D, F or G, using synaptobrevin (Syb) or a cleavable fragment thereof as a corresponding substrate protein. Similarly, the method of the present invention is suitable for detecting BoNT/C, with SNAP-25 or a cleavable fragment thereof as a corresponding substrate protein.

In a preferred embodiment, for the method of the present invention, FRET is detected by a method selected from the group consisting of 1) measuring fluorescence emitted at the acceptor (A) emission wavelength and donor (D) emission wavelength, and determining energy transfer by the ratio of the respective emission amplitudes; 2) measuring fluorescence lifetime of D; 3) measuring photobleaching rate of D; 4) measuring anisotropy of D or A; and 5) measuring the Stokes shift monomer/excimer fluorescence.

A particularly preferred fluorophore pair for the present invention is CFP-YFP.

The present invention also provides a method for screening for an inhibitor of a botulinum neurotoxin, comprising providing a cell genetically engineered to express a construct as described above, wherein the linker in the construct is a substrate peptide corresponding to the botulinum toxin; exposing said cell to the botulinum neurotoxin in the presence of a candidate inhibitor compound; and detecting FRET signals of the cell before and after said exposing to the botulinum toxin, wherein an observation of substantially no decrease in FRET, compared to a cell exposed to the botulinum neurotoxin in the absence of the candidate inhibitor, indicates that the candidate inhibitor is capable of inhibiting the botulinum neurotoxin. Preferably, the candidate compound is among a library of compounds and the method is a high throughput method.

In a further embodiment, the present invention provides a method for detecting a botulinum neurotoxin, the method comprising depositing a layer of a BoNT target peptide onto

a metal surface, exposing said metal surface having BoNT target peptide on its surface to a sample suspected of containing a corresponding BoNT, under conditions to allow the BoNT to cleave the target peptide on the metal surface, and measuring any decrease in the molecular weight of the target peptide bound to the metal surface as a result of BoNT cleavage via surface plasmon resonant imaging.

Another embodiment of the present inventions is a method for detecting a botulinum neurotoxin, the method comprising, a) providing a construct, wherein the linker is a substrate protein or a cleavable fragment thereof corresponding to the botulinum neurotoxin to be detected, and wherein the construct is anchored to a plasma membrane of cell, such that the linker protein adopts a conformation with which FRET occurs between the donor and acceptor fluorophore, b) exposing the construct to a sample suspected of containing a botulinum neurotoxin under a condition under which the botulinum neurotoxin cleaves the protein substrate or a fragment thereof, and c) detecting and comparing the FRET signal before and after the construct is exposed to the sample, wherein a decrease in FRET indicates the presence of botulinum neurotoxin in the sample.

The present invention further provides a molecular construct comprising a linker peptide, a first fluorophore moiety and a second fluorophore moiety, wherein the linker peptide is a substrate of a botulinum neurotoxin selected from the group consisting of synaptobrevin, syntaxin and SNAP-25, or a fragment thereof that is able to be cleaved by the botulinum neurotoxin, and wherein emission spectrum of the first fluorophore moiety is detectably different from the excitation spectrum of the second fluorophore moiety. Preferably, the linker is a full-length protein of the substrate synaptobrevin, syntaxin or SNAP-25. Preferably, the construct is anchored to a vesicle, which may or may not be inside a cell. The present further provides a polynucleotide construct encoding the above polypeptide construct.

The present invention further provides a method for detecting a botulinum neurotoxin, the method comprising a) providing a peptide construct as described above, b) exposing the construct to a sample suspected of containing a botulinum neurotoxin under a condition under which the botulinum neurotoxin cleaves the protein substrate or a fragment thereof, and c) detecting spatial separation of the fluorescence signals of the first and second fluorophores, wherein occurrence of spatial separation indicates the presence of botulinum neurotoxin in the sample. Preferably, the vesicle is inside a live cell, the linker peptide is CFP-SNAP-25 (1-197) linked to SNAP-25 (198-206)-YFP, wherein detection of CFP fluorescence but not YFP fluorescence indicates the existence of presence of botulinum neurotoxin in the sample.

The invention is described in more details below with the help of the drawings and examples, which are not to be construed to be limiting the scope of the present invention.

#### DESCRIPTION OF THE DRAWINGS

FIG. 1 is a schematic depiction of the CFP-YFP based bio-sensors for monitoring botulinum neurotoxin protease activity. FIG. 1A is a design of the bio-sensor constructs. CFP and YFP are connected via a fragment of synaptobrevin (amino acid 33-94, upper panel), or SNAP-25 (amino acid 141-206, lower panel), respectively. The cleavage sites for each botulinum neurotoxin on these fragments are labeled. FIG. 1B shows that CFP and YFP function as a donor-acceptor pair for FRET, in which the excitation of CFP results in YFP fluorescence emission (upper panel). Energy transfer between linked CFP and YFP is abolished after cleavage of

5

the synaptobrevin or SNAP-25 fragment with botulinum neurotoxins (lower panel). The optimal excitation wavelength for CFP is 434 nm, and the emission peak is 470 nm for CFP, and 527 nm for YFP.

FIG. 2 shows the fluorescence emission spectra of the recombinant bio-sensor proteins. FIG. 2A shows the emission spectra of the recombinant his<sub>6</sub>-tagged CFP and YFP alone (300 nM), as well as the mixture of these two proteins (1:1). The fluorescence signals were collected from 450 to 550 nm using a PTQM-1 fluorometer in Hepes buffer (50 mM Hepes, 2 mM DTT, and 10  $\mu$ M ZnCl<sub>2</sub>, pH 7.1). The excitation wavelength is 434 nm, the optimal for CFP. The YFP protein only elicits a small fluorescence emission signal by direct excitation at 434 nm. FIG. 2B shows the emission spectra of recombinant his<sub>6</sub>-tagged CFP-SybII-YFP, collected as described in panel FIG. 2A. The arrow indicates the YFP emission peak resulted from FRET.

FIG. 3 depicts that the cleavage of bio-sensor proteins by botulinum neurotoxin can be monitored by emission spectra scan in real time in vitro. A): BoNT/B were pre-reduced with 2 mM DTT, 10  $\mu$ M ZnCl<sub>2</sub> for 30 min at 37° C. 50 nM toxin were added into a cuvette that contained 300 nM CFP-SybII-YFP protein in the Hepes buffer (50 mM Hepes, 2 mM DTT, 10  $\mu$ M ZnCl<sub>2</sub>). The emission spectra was recorded as described in FIG. 2A at indicated time before and after adding toxin (upper panel). 30  $\mu$ l samples were taken from the cuvette after each emission scan, and mixed with SDS-loading buffer. These samples were subject to SDS-page and enhanced chemiluminescence (ECL). The cleavage of CFP-SybII-YFP fusion protein was detected using an anti-his<sub>6</sub> antibody that recognizes the his<sub>6</sub> tag at the fusion protein N-terminus (lower panel). The cleavage of CFP-SybII-YFP fusion protein resulted in decreased YFP fluorescence and increased CFP fluorescence. This change was recorded in real-time by emission spectra scan. B): CFP-SybII-YFP was used to test BoNT/F activity, as described in panel A. C): CFP-SNAP-25-YFP was used to test BoNT/A activity (10 nM toxin was used), as described in panel A. D): CFP-SNAP-25-YFP was used to test BoNT/E activity (10 nM toxin was used), as described in panel A.

FIG. 4 shows the monitoring of botulinum neurotoxin protease kinetics using bio-sensor proteins in a microplate spectrofluorometer. A): Fluorescence change during the cleavage of bio-sensor proteins by botulinum neurotoxin could be recorded in real time using a plate-reader. 10 nM BoNT/A were mixed with 300 nM CFP-SNAP-25-YFP, and 100  $\mu$ l per well sample was scanned using a plate-reader. The excitation is 434 nm, and for each data point, both emission value at 470 nm (CFP channel), and 527 nm (YFP or FRET channel) were collected. The reaction was traced for one and half hour at the interval of 30 sec per data point. The decrease of YFP fluorescence and the increase of CFP fluorescence were monitored in real time. B): The rate of cleavage is dependent on the concentration of the neurotoxin. The various concentrations of botulinum neurotoxin A and E were tested for their ability to cleave the same amount of bio-sensor proteins. FRET signal change (FRET ratio) is measured by the ratio between YFP emission signal and the CFP emission signal at the same data point. C): CFP-SNAP-25-YFP protein alone, and the CFP/YFP protein mixture (1:1) were scanned at the same time, as the internal control.

FIG. 5 shows the sensitivity of the bio-sensor assay using a plate-reader. A): 300 nM CFP-SNAP-25-YFP were mixed with various concentration of BoNT/A or E in a 96-well plate, the total volume is 100  $\mu$ l per well. The plate was incubated at 37° C. for 4 hours and then scanned with a plate-reader (upper panel). The FRET ratio was plotted against the log value of

6

the toxin concentration. The EC<sub>50</sub> values for each curve are listed in the table on the lower panel. Each data point represents the mean of three independent experiments. B): 300 nM CFP-SybII-YFP were mixed with various concentration of BoNT/B or F. The data were collected and plotted as described in panel A.

FIG. 6 depicts the monitoring of botulinum neurotoxin activity in living cells. A): CFP-SNAP-25-YFP was expressed in wild type PC12 cells. The entry and catalytic activity of BoNT/A (50 nM) was monitored by recording the FRET ratio change that results from CFP-SNAP-25-YFP cleavage inside the cells. The FRET ratio was averaged from a total of 53 toxin treated cells and 53 control cells. Treatment with BoNT/A for 72 hours reduced the FRET ratio of the entire population of cells by a significant degree ( $P < 1.47E-5$ ). B): PC 12 cells that express syt II were transfected with CFP-SybII-YFP and treated with BoNT/B (30 nM). The entry and catalytic activity of BoNT/B were monitored by recording the FRET ratio change as in panel (A); 73 toxin treated and 73 control cells were analyzed. Treatment with BoNT/B for 72 hours reduced the FRET ratio of the entire population of cells by a significant degree ( $P < 2E-10$ ).

FIG. 7 shows the monitoring BoNT/A activity in living cells using according to the present invention. (a). Measuring the FRET signal of toxin sensors in living cells. CFP-SNAP-25(141-206)-YFP was used to transfect PC12 cells. This sensor appeared to be soluble in cells. Three images using different filter set (CFP, FRET and YFP) were taken for each cell sequentially, using exactly the same settings. Images were color coded to reflect the fluorescence intensity in arbitrary units as indicated in the look-up table on the left. The corrected FRET value was calculated by subtracting the cross-talk from both CFP and YFP from the signals collected using the FRET filter set, as detailed in the Methods. (b). PC12 cells transfected with CFP-SNAP-25(141-206)-YFP were used to detect BoNT/A activity. Fifty nM BoNT/A holotoxin was added to the culture medium and 80 cells were analyzed after 96 hours. The corrected FRET signal was normalized to the CFP fluorescence signal and plotted as a histogram with the indicated bins. Control cells were transfected with the same sensor but were not treated with toxins, and they were analyzed in parallel. Incubation with BoNT/A shifted the FRET ratio (corrected FRET/CFP) among the cell population, indicating the sensor proteins were cleaved by BoNT/A in cells. However, the shift was small, indicating that the cleavage was not efficient in cells. (c). Left panel: an efficient toxin sensor was built by linking CFP and YFP through full-length SNAP-25 (amino acid 1-206), and tested for detecting BoNT/A activity in cells. This CFP-SNAP-25(FL)-YFP fusion protein was localized primarily to plasma membranes in cells via palmitoylation at its four cysteines (left panel, upper frames of the middle panel). Middle panel: PC12 cells were transfected with the CFP-SNAP-25(FL)-YFP sensor and used to detect BoNT/A activity. Fifty nM BoNT/A holotoxin was added to the culture medium and the FRET signals of 200 cells were analyzed after 48 and 96 hours as described in panel (a). Control cells were transfected with toxin sensors but were not treated with toxins, and they were analyzed in parallel. The images of representative cells were shown in the middle panel. This sensor yielded significant FRET (upper "corrected FRET" frame of the middle panel). The FRET signal was abolished after cells were treated with BoNT/A (96 h, lower "corrected FRET" frame of the middle panel). Note: one of the cleavage products, the C-terminus of SNAP-25 tagged with YFP, was degraded after toxin cleavage. Thus, the fluorescence signal of YFP was significantly decreased in toxin-treated cells (lower "YFP" frame). Right panel: the

7

FRET ratios are plotted as a histogram with indicated bins as described in panel (b). (d). PC12 cells were transfected with CFP-SNAP-25(Cys-Ala)-YFP (full length SNAP-25 with Cys 85,88,90,92 Ala mutations, left panel). This protein has diffusely distributed throughout the cytosol, and lacked the strong FRET signal observed for CFP-SNAP-25(FL)-YFP (right panel, "corrected FRET" frame). (e). PC12 cells were transfected with CFP-SNAP-25(FL)-YFP and CFP-SNAP-25(Cys-Ala)-YFP. Cells were then treated with (+, intact cells) or without (-, intact cells) BoNT/A (50 nM, 72 h), and were harvested. Half of the cell extracts from samples that are not been exposed to BoNT/A were also incubated with (+, in vitro) or without (-, in vitro) reduced BoNT/A in vitro (200 nM, 30 min, 37° C.), served as controls to show the cleavage products (two cleavage products are indicated by arrows). The same amount of each sample (30 µg cell lysate) was loaded to one SDS-page gel and subjected to immunoblot analysis using an anti-GFP antibody. While CFP-SNAP-25(FL)-YFP underwent significant cleavage in intact cells, there was no detectable cleavage of CFP-SNAP-25(Cys-Ala)-YFP in cells, indicating the membrane anchoring is important for efficient cleavage by BoNT/A in living cells. Note: only one cleavage product (CFP-SNAP-25(1-197)) was detected in toxin treated cells, indicating that the other cleavage product (SNAP-25(198-206)-YFP) was largely degraded in cells.

FIG. 8 shows that anchoring CFP-SNAP-25(141-206)-YFP sensor to the plasma membrane created a sensor that was efficiently cleaved by BoNT/A in cells. (a). A schematic description of the construct built to target CFP-SNAP-25(141-206)-YFP to the plasma membrane. A fragment of SNAP-25 that contains the palmitoylation sites (residues 83-120) (SEQ ID NO: 11) was fused to the N-terminus of the CFP-SNAP-25(141-206)-YFP sensor, and this fragment targeted the fusion protein to the plasma membrane. (b). PC12 cells were transfected with SNAP-25(83-120)-CFP-SNAP-25(141-206)-YFP. Fifty nM BoNT/A holotoxin was added to the culture medium and the FRET signals of 80 cells were analyzed after 96 hours as described in FIG. 7a. Control cells, transfected with toxin sensors but not treated with toxins, were analyzed in parallel. The images of representative cells are shown in the left panel. This sensor yielded significant FRET (upper "corrected FRET" frame of the left panel). The FRET signal was reduced after cells were treated with BoNT/A (96 h, lower "corrected FRET" frame of the left panel). Right panel: the FRET ratios of cells are plotted as a histogram with indicated bins as described in FIG. 7b. (c). PC12 cells were transfected with various CFP/YFP constructs and the corresponding FRET ratios were determined as described in FIG. 7a. Co-expression of CFP and YFP in cells, did not result in significant FRET under our assay conditions. CFP-SNAP-25(FL)-YFP exhibited significant levels of FRET whereas the soluble CFP-SNAP-25(Cys-Ala)-YFP did not.

FIG. 9 shows that efficient cleavage of Syb by BoNT/B requires the localization of Syb to vesicles. (a). CFP-Syb(33-94)-YFP was used to transfect a PC12 cell line that stably expresses synaptotagmin II (Dong et al. Synaptotagmins I and II mediate entry of botulinum neurotoxin B into cells. J. Cell Biol. 162, 1293-1303 (2003)). This sensor appears to be soluble inside cells and generates strong FRET signals (upper panel). PC12 cells transfected with CFP-Syb(33-94)-YFP were used to detect BoNT/B activity. Fifty nM BoNT/B holotoxin was added to the culture medium and 80 cells were analyzed after 96 hours as described in FIG. 7b. Control cells were transfected with the same sensor but were not treated with toxins, and they were analyzed in parallel. Incubation with BoNT/B shifted the FRET ratio among the cell popula-

8

tion, indicating the sensor proteins were cleaved by BoNT/B in cells. However, the shift was small, indicating that the cleavage was not efficient in cells. (b). A schematic description of YFP-Syb(FL)-CFP sensor. Full-length Syb contain 116 amino acids, and is localized to vesicles through a single transmembrane domain. Cleavage of Syb by BoNT/B released the cytoplasmic domain of Syb tagged with YFP from the vesicle. (c). PC12 cells that stably express synaptotagmin II were transfected with YFP-Syb(FL)-CFP, and were treated with BoNT/B (50 nM, 48 h, lower frames), or without toxin (control, upper frames). CFP and YFP fluorescence images were collected for each cell, and representative cells are shown. This sensor is localized to vesicles, and was excluded from the nucleus in living cells, as evidenced by both CFP and YFP fluorescent signals (upper frames). BoNT/B treatment resulted in a redistribution of YFP signals, which became soluble in the cytosol and entered the nucleus. (d). A truncated version of Syb, residues 33-116 (SEQ ID NO: 10), was used to link a CFP and YFP. This construct contains the same cytosolic region (residues 33-94, panel (b)) as the Syb fragments in the soluble sensor CFP-Syb(33-96)-YFP, and it also contains the transmembrane domain of Syb. PC12 cells that express synaptotagmin II were transfected with CFP-Syb(33-116)-YFP and CFP-Syb(33-94)-YFP. Cells were then treated with (+, intact cells) or without (-, intact cells) BoNT/B (50 nM, 48 h), and were harvested. Half of the cell extracts from samples that were not exposed to BoNT/B were also incubated with (+, in vitro) or without (-, in vitro) reduced BoNT/B in vitro (200 nM, 30 min, 37.degree. C.). Two cleavage products are indicated by asterisks. The same amount of each sample (30 µg cell lysate) was loaded to one SDS-page gel and subjected to immunoblot analysis using an anti-GFP antibody. While CFP-Syb(33-116)-YFP underwent significant cleavage in intact cells, there was no detectable cleavage of CFP-Syb(33-94)-YFP, indicating the localization to vesicles is important for efficient cleavage by BoNT/B in living cells.

#### DETAILED DESCRIPTION OF THE INVENTION

The present invention provides novel compositions and methods based on fluorescence resonance energy transfer (FRET) between fluorophores linked by a peptide linker which is a substrate of a BoNT and can be cleaved by the toxin, to detect botulinum neurotoxins and monitor their substrate cleavage activity, preferably in real time. The method and compositions of the present invention allow for the detection of pico-molar level BoNTs within hours, and can trace toxin enzymatic kinetics in real time. The methods and compositions can further be used in high-throughput assay systems for large-scale screening of toxin inhibitors, including inhibitors of toxin cellular entry and translocation through vesicle membrane using cultured cells. The present invention is also suitable for monitoring botulinum neurotoxin activity in living cells and neurons.

In another embodiment, the present invention provides a construct and method of using the construct which comprises full-length SNAP-25 and Syb proteins as the linkers, as fluorescent biosensors that can detect toxin activity within living cells. Cleavage of SNAP-25 abolished CFP/YFP FRET signals and cleavage of Syb resulted in spatial redistribution of the YFP fluorescence in cells. The present invention provides a means to carry out cell based screening of toxin inhibitors and for characterizing toxin activity inside cells. The present invention also discloses that the sub-cellular localization of SNAP-25 and Syb affects efficient cleavage by BoNT/A and B in cells, respectively.

Fluorescent Resonance Energy Transfer (FRET) is a tool which allows the assessment of the distance between one molecule and another (e.g. a protein or nucleic acid) or between two positions on the same molecule. FRET is now widely known in the art (for a review, see Matyus, (1992) J. Photochem. Photobiol. B: Biol., 12:323). FRET is a radiationless process in which energy is transferred from an excited donor molecule to an acceptor molecule. Radiationless energy transfer is the quantum-mechanical process by which the energy of the excited state of one fluorophore is transferred without actual photon emission to a second fluorophore. The quantum physical principles are reviewed in Jovin and Jovin, 1989, *Cell Structure and Function by Microspectrofluorometry*, eds. E. Kohen and J. G. Hirschberg, Academic Press. Briefly, a fluorophore absorbs light energy at a characteristic wavelength. This wavelength is also known as the excitation wavelength. The energy absorbed by a fluorochrome is subsequently released through various pathways, one being emission of photons to produce fluorescence. The wavelength of light being emitted is known as the emission wavelength and is an inherent characteristic of a particular fluorophore. In FRET, that energy is released at the emission wavelength of the second fluorophore. The first fluorophore is generally termed the donor (D) and has an excited state of higher energy than that of the second fluorophore, termed the acceptor (A).

An essential feature of the process is that the emission spectrum of the donor overlap with the excitation spectrum of the acceptor, and that the donor and acceptor be sufficiently close.

In addition, the distance between D and A must be sufficiently small to allow the radiationless transfer of energy between the fluorophores. Because the rate of energy transfer is inversely proportional to the sixth power of the distance between the donor and acceptor, the energy transfer efficiency is extremely sensitive to distance changes. Energy transfer is said to occur with detectable efficiency in the 1-10 nm distance range, but is typically 4-6 nm for optimal results. The distance range over which radiationless energy transfer is effective depends on many other factors as well, including the fluorescence quantum efficiency of the donor, the extinction coefficient of the acceptor, the degree of overlap of their respective spectra, the refractive index of the medium, and the relative orientation of the transition moments of the two fluorophores.

The present invention provides a construct ("FRET construct") which comprises a fluorophore FRET donor and an acceptor linked by linker peptide ("substrate peptide") that is cleavable by a corresponding BoNT. In the presence of a BoNT, the linker peptide is cleaved, thereby leading to a decrease in energy transfer and increased emission of light by the donor fluorophore. In this way, the proteolysis activity of the toxin can be monitored and quantitated in real-time.

As used herein with respect to donor and corresponding acceptor fluorescent moieties, "corresponding" refers to an acceptor fluorescent moiety having an emission spectrum that overlaps the excitation spectrum of the donor fluorescent moiety. The wavelength maximum of the emission spectrum of the acceptor fluorescent moiety should be at least 100 nm greater than the wavelength maximum of the excitation spectrum of the donor fluorescent moiety. Accordingly, efficient non-radioactive energy transfer can be produced.

As used herein with respect to substrate peptide and BoNT, "corresponding" refers to a BoNT toxin that is capable of acting on the linker peptide and cleaves at a specific cleavage site.

Fluorescent donor and corresponding acceptor moieties are generally chosen for (a) high efficiency Forster energy transfer; (b) a large final Stokes shift (>100 nm); (c) shift of the emission as far as possible into the red portion of the visible spectrum (>600 nm); and (d) shift of the emission to a higher wavelength than the Raman water fluorescent emission produced by excitation at the donor excitation wavelength. For example, a donor fluorescent moiety can be chosen that has its excitation maximum near a laser line (for example, Helium-Cadmium 442 nm or Argon 488 nm), a high extinction coefficient, a high quantum yield, and a good overlap of its fluorescent emission with the excitation spectrum of the corresponding acceptor fluorescent moiety. A corresponding acceptor fluorescent moiety can be chosen that has a high extinction coefficient, a high quantum yield, a good overlap of its excitation with the emission of the donor fluorescent moiety, and emission in the red part of the visible spectrum (>600 nm).

A skilled artisan will recognize that many fluorophore molecules are suitable for FRET. In a preferred embodiment, fluorescent proteins are used as fluorophores. Representative donor fluorescent moieties that can be used with various acceptor fluorescent moieties in FRET technology include fluorescein, Lucifer Yellow, B-phycoerythrin, 9-acridineisothiocyanate, Lucifer Yellow VS, 4-acetamido-4'-isothiocyanatostilbene-2,2'-disulfonic acid, 7-diethylamino-3-(4'-isothiocyanatophenyl)-4-methylcoumarin, succinimidyl 1-pyrenebutyrate, and 4-acetamido-4'-isothiocyanatostilbene-2,2'-disulfonic acid derivatives. Representative acceptor fluorescent moieties, depending upon the donor fluorescent moiety used, include LC-Red 640, LC-Red 705, Cy5, Cy5.5, Lissamine rhodamine B sulfonyl chloride, tetramethyl rhodamine isothiocyanate, rhodamineisothiocyanate, erythrosine isothiocyanate, fluorescein, diethylenetriamine pentaacetate or other chelates of Lanthanide ions (e.g., Europium, or Terbium). Donor and acceptor fluorescent moieties can be obtained, for example, from Molecular Probes (Junction City, Oreg.) or Sigma Chemical Co. (St. Louis, Mo.).

Table 1 lists others examples of chemical fluorophores suitable for use in the invention, along with their excitation and emission wavelengths.

Certain naturally occurring amino acids, such as tryptophan, are fluorescent. Amino acids may also be derivatized, e.g. by linking a fluorescent group onto an amino acid (such as linking AEDANS to a Cys), to create a fluorophore pair for FRET. The AEDANS-Cys pair is commonly used to detect protein conformational change and interactions. Some other forms fluorescence groups have also been used to modify amino acids and to generate FRET within the protein fragments (e.g. 2,4-dinitrophenyl-lysine with S-(N-[4-methyl-7-dimethylamino-coumarin-3-yl]-carboxamidomethyl)-cysteine).

In another embodiment, which is especially suitable for using in live cells, green fluorescent protein (GFP) and its various mutants are used as the fluorophores. Examples of fluorescent proteins which vary among themselves in excitation and emission maxima are listed in Table 1 of WO 97/28261 (Tsien et al., 1997), which is incorporated herein by reference. These (each followed by [excitation max./emission max.] wavelengths expressed in nanometers) include wild-type Green Fluorescent Protein [395(475)/508] and the cloned mutant of Green Fluorescent Protein variants P4 [383/447], P4-3 [381/445], W7 [433(453)/475(501)], W2 [432(453)/408], S65T [489/511], P4-1 [504(396)/480], S65A [471/504], S65C [479/507], S65L [484/510], Y66F [360/442], Y66W [458/480], I0c [513/527], W1B [432(453)/476

## 11

(503)], Emerald [487/508] and Sapphire [395/511]. Red fluorescent proteins such as DsRed (Clontech) having an excitation maximum of 558 nm and an emission maximum of 583 nm can also be used. This list is not exhaustive of fluorescent proteins known in the art; additional examples are found in the Genbank and SwissPro public databases.

TABLE 1

Fluorophore	Excitation (nm)	Emission (nm)	Color
PKH2	490	504	green
PKH67	490	502	green
Fluorescein (FITC)	495	525	green
Hoechst 33258	360	470	blue
R-Phycoerythrin (PE)	488	578	orange-red
Rhodamine (TRITC)	552	570	red
Quantum Red <sup>TM</sup>	488	670	red
PKH26	551	567	red
Texas Red	596	620	red
Cy3	552	570	red

GFP is a 27-30 KD protein, and can be fused with another protein, e.g. the target protein, and the fusion protein can be engineered to be expressed in a host cell, such as those of *E. coli*. GFP and its various mutants are capable of generating fluorescence in live cells and tissues. The mutation forms of GFP has slight amino acid differences within their fluorescence region which result in shifted spectrum. More mutations of GFP are expected to be created in the future to have distinct spectra. Among these GFP variants, BFP-YFP, BFP-CFP, CFP-YFP, GFP-DsRed, are commonly used as FRET donor-acceptor pairs to detect protein-protein interactions. These pairs are also suitable to detect protease cleavage of the linker region that links the pair.

The use of fluorescent proteins is preferred because they enable the use of a linker fragment of about 60 amino acids residues. Longer fragments usually are more sensitive to toxin recognition and cleavage, thus, results in a higher sensitivity for detecting toxin. As shown in the examples below, the EC50 for BoNT/A and E after 4 hour incubation with CFP-SNAP-YFP are as low as 15-20 pM (1-2 ng/ml), when measured with a widely used microplate spectrofluorometer (Spectra Max Gemini, Molecular Device). EC50 for BoNT/B and F are about 200-250 pM, and the sensitivity can be enhanced by increasing incubation time.

According to one embodiment of the present invention, two fluorophores are linked together by a linker of suitable length, such that FRET occurs. The linker is a fragment of a BoNT substrate protein. When exposed to a BoNT capable of cleaving the linker fragment, the two fluorophores are separated and FRET is abolished. The present invention provides accordingly a method for detecting BoNT by detecting the change in FRET. SNARE proteins from many species are suitable as substrate proteins for BoNT toxins, because these proteins are known to be conserved at the amino acid level. Many of these BoNT substrate proteins are known and available to be used or modified for use as a suitable linker peptide for the present invention. Some of the substrate proteins and their GenBank accession numbers are listed in Table 2. The complete amino acid sequences for human SNAP25-A (NP 003072) and for human syb II (AAH19608) are provided in the Sequence Listing as SEQ ID NO: 7 and SEQ ID NO: 8, respectively.

## 12

TABLE 2

Protein	Origin	GenBank Accession #
syb I	mouse	NP-033522
syb 1a	human	NP_055046
syb I	rat	AAN85832
syb	African frog	AAB88137
syb	electric ray	A32146
syb	California sea hare	P35589
syb	<i>Takifugu rubripes</i>	AAB94047
syb	<i>drosophila</i>	AAB28707
syb II	mouse	NP_033523
syb II	African frog	P47193
Syb II	rabbit	AAN14408
syb II	rat	NP_036795
syb II	human	AAH19608
syb 3	human	AAP36821
SNAP25-1	Zebra fish	AAC64289
SNAP25-A	human	NP_003072
SNAP25a	American frog	AAO13788
SNAP25	mouse	XP_130450
SNAP25	rat	NP_112253
SNAP25	goldfish	I50480
SNAP25-b	Zebra fish	NP_571509
SNAP25b	American frog	AAO13789
SNAP25-3	human	CAC34535

Each BoNT toxin is known to cleave a specific peptide bond between two specific amino acids within the toxin cleavage site. Table 3 below lists the amino acid pairs for each BoNT toxin. These pairs of amino acid sequence, however, are not sufficient for toxin recognition and cleavage. For example, BoNT/A cleaves SNAP-25 at Q(197)-R(198) of the rat SNAP-25 sequence (GenBank accession No: NP\_112253), but not Q(15)-R(16). Generally, there is no conserved amino acid sequence as the recognition site; rather, the toxins are believed to recognize the tertiary, rather than the primary, structure of their target protein. Nevertheless, a very short fragment of the substrate protein is sufficient for toxin recognition and cleavage, regardless of its species origin, as long as they have the two amino acid residues at the toxin cleavage site listed above in Table 3 below.

The linker protein or peptide can be as long as the full-length of the BoNT substrate protein. Preferably the linker is a shorter fragment of the substrate protein. A full-length substrate linker may be too long for efficient FRET, and a shorter fragment is more effective and easier to produce than the full-length protein. On the other hand, as indicated above, the linker peptide should be above certain minimum length, because below such a minimum length, cleavage of the linker peptide by the respective BoNTs becomes inefficient.

TABLE 3

Peptide Bonds Recognized and Cleaved by BoNT Toxins		
Toxin	Cleavage Site	Putative Minimum Recognition Sequence
BoNT/A	Q-R	Glu-Ala-Asn-Gln- (SEQ ID NO: 1) Arg-Ala-Thr-Lys
BoNT/B	Q-F	Gly-Ala-Ser-Gln- (SEQ ID NO: 2) Phe-Glu-Thr-Ser
BoNT/C (SNAP25)	R-A	Ala-Asn-Gln-Arg- (SEQ ID NO: 3) Ala-Thr-Lys-Met
BoNT/C (Syntaxin)	K-A	Asp-Thr-Lys-Lys- (SEQ ID NO: 4) Ala-Val-Lys-Phe
BoNT/D	K-L	



TABLE 3-continued

Peptide Bonds Recognized and Cleaved by BoNT Toxins		
Toxin	Cleavage Site	Putative Minimum Recognition Sequence
BoNT/E	R-I	Gln-Ile-Asp-Arg- (SEQ ID NO: 5) Ile-Met-Glu-Lys
BoNT/F	Q-K	Glu-Arg-Asp-Gln- (SEQ ID NO: 6) Lys-Leu-Ser-Glu
BoNT/G	A-A	

Using syb II and BoNT/B as an example, Table 4 below illustrates the relationship between linker-peptide length and toxin cleavage rate. The full-length rat syb II protein (GenBank No: NP\_036795) has 116 amino acids, of which amino acid 1-94 at the amino terminus is the cytoplasmic domain and the rest is the transmembrane domain. As Table 1 makes clear, within certain limit, a shorter fragment is cleaved by the toxin at a slower rate (data from Foran et al., Biochemistry 33:15365, 1994).

As can be seen from Table 4, tetanus neurotoxin (TeNT) requires a longer fragment (33-94) for optimum cleavage than BoNT/B (55-94). A fragment consisting of 60-94 has been used in several studies including several peptide-based toxin assay methods (Schmidt et al., 2003, supra, and Schmidt et al., 2001, Analytical Biochemistry, 296: 130-137).

For BoNT/A, the 141-206 fragment of SNAP-25 (SEQ ID NO: 9) is required for retaining most of the toxin sensitivity (Washbourne et al., 1997, FEBS Letters, 418:1). There are also other reports that a shorter peptide, amino acids 187-203 of SNAP25, is sufficient to be cleaved by BoNT/A (, 2001). The minimum site for BoNT/A is: Glu-Ala-Asn-Gln-Arg-Ala-Thr-Lys (SEQ ID NO: 1). BoNT/A cleaves between Gln-Arg.

TABLE 4

Relationship Between Syb II fragment Length and Cleavage Rate		
syb II Fragment Length	Relative cleavage rate by BoNT/B	% Relative cleavage rate by TeNT
full length 1-116	100 (%)	100 (%)
33-94	100	100
45-94	121	1.1
55-94	105	0.4
65-94	7	0.3

Using full-length SNAP-25 as the linker sequence between CFP and YFP inside PC12 cells, preliminary results indicate that FRET signals obtained are stronger than those obtained using a shorter fragment, enough to be detected using a conventional lab microscope. It is believed that in PC12 cells the rate of cleavage of full-length SNAP-25 by BoNT/A is faster and more consistent from cell to cell than the short fragment, likely due to the fact that full-length SNAP-25 is targeted onto plasma membrane, on to which the BoNT/A light chain may also be targeted and anchored.

For BoNT/B, a fragment as short as between residues 60-94 was found to be as effective as a fragment between residues 33-94. Preferably, a fragment between 33-94 is used for BoNT/B and TeNT. Both toxins cleave between Gln and Phe, and the minimum sequence for cleavage is believed to be: Gly-Ala-Ser-Gln-Phe-Glu-Thr-Ser (SEQ ID NO: 2). There are indications that BoNT/B light chain may be targeted and anchored on synaptic vesicles, it may be desirable

to also target, via signal sequences, a FRET construct of the present invention onto synaptic vesicles to achieve increased cleavage efficient inside cells.

BoNT/C cleaves both SNAP25 and Syntaxin, and is believed to cleave at a very slow rate if the substrate is in solution. Native SNAP25 and Syntaxin that reside on the cell membrane are cleaved most efficiently by BoNT/C. The minimum cleavage sequence for SNAP25 is: Ala-Asn-Gln-Arg-Ala-Thr-Lys-Met (SEQ ID NO: 3), where cleavage occurs between Arg-Ala; for Syntaxin, the minimum cleavage sequence is Asp-Thr-Lys-Lys-Ala-Val-Lys-Phe (SEQ ID NO: 4), and cleavage occurs at Lys-Ala.

BoNT/E requires a minimum sequence of: Gln-Ile-Asp-Arg-Ile-Met-Glu-Lys (SEQ ID NO: 5), and cleaves between Arg-Ile.

BoNT/F cleaves Gln-Lys. Schmidt et al. (Analytical Biochemistry, 296: 130-137 (2001)) reported that a 37-75 fragment of syb II retains most of toxin sensitivity, and the minimum sequence is: Glu-Arg-Asp-Gln-Lys-Leu-Ser-Glu (SEQ ID NO: 6).

From the above discussion on the minimum cleavage sites and the relationship between FRET signal strength and linker length, and between cleavage efficiency and linker length, a person skilled in the art can easily choose suitable linker length to achieve optimal balance between FRET signal strength and cleavage efficiency.

Preferably, the linker length is anywhere between about 8 a.a. to about 100 a.a., preferably between 10-90, more preferable between 20-80, between 30-70, between 40-60 a.a. long, depending on the specific substrate and toxin combination.

In one embodiment, a linker protein or fragments thereof may be first purified, or peptides were first synthesized, and then the fluorescence groups were added onto certain amino acids through chemical reaction. A fluorescent label is either attached to the linker polypeptide or, alternatively, a fluorescent protein is fused in-frame with a linker polypeptide, as described below. The above discussion makes clear that while short substrate fragments are desirable for toxin detection specificity, longer fragments may be desirable for improved signal strength or cleavage efficiency. It is readily recognized that when the substrate protein contains more than one recognition site for one BoNT, a position result alone will not be sufficient to identify which specific toxin is present in the sample. In one embodiment of the present invention, if a longer substrate fragment, especially a full-length substrate protein, is used, the substrate may be engineered, e.g. via site-directed mutagenesis or other molecular engineering methods well-known to those skilled in the art, such that it contains only one toxin/protease recognition site. See e.g. Zhang et al, 2002, Neuron 34:599-611 "Ca<sup>2+</sup>-dependent synaptotagmin binding to SNAP-25 is essential for Ca<sup>2+</sup> triggered exocytosis" (showing that SNAP-25 having mutations at BoNT/E cleavage site (Asp 179 to Lys) is resistant to BoNT/E cleavage, but behaves normally when tested for SNARE complex formation). In a preferred embodiment, the method of the present invention uses a combination of specificity engineering and length optimization to achieve optimal signal strength, cleavage efficiency and toxin/serotype specificity.

In a preferred embodiment, the fluorophores are suitable fluorescent proteins linked by a suitable substrate peptide. A FRET construct may then be produced via the expression of recombinant nucleic acid molecules comprising an in-frame fusion of sequences encoding such a polypeptide and a fluorescent protein label either in vitro (e.g., using a cell-free transcription/translation system, or instead using cultured

cells transformed or transfected using methods well known in the art). Suitable cells for producing the FRET construct may be a bacterial, fungal, plant, or an animal cell. The FRET construct may also be produced in vivo, for example in a transgenic plant, or in a transgenic animal including, but not limited to, insects, amphibians, and mammals. A recombinant nucleic acid molecule of use in the invention may be constructed and expressed by molecular methods well known in the art, and may additionally comprise sequences including, but not limited to, those which encode a tag (e.g., a histidine tag) to enable easy purification, a linker, a secretion signal, a nuclear localization signal or other primary sequence signal capable of targeting the construct to a particular cellular location, if it is so desired.

As low as 300 nM proteins is enough to generate sufficient fluorescence signals that can be detected using a microplate spectrofluorometer. The fluorescence signal change can be traced in real time to reflect the toxin protease enzymatic activity. Real time monitoring measures signal changes as a reaction progresses, and allows both rapid data collection and yields information regarding reaction kinetics under various conditions. FRET ratio changes and degrees of cleavage may be correlated, for example for a certain spectrofluorometer using a method such as HPLC assay in order to correlate the unit of kinetic constant from the FRET ratio to substrate concentration.

The method of the present invention is highly sensitive, and as a consequence, can be used to detect trace amount of BoNTs in environmental samples directly, including protoxins inside Botulinum bacterial cells. Accordingly, the present invention further provides a method for toxin detection and identification directly using environmental samples.

The present invention further provides a method for screening for inhibitors of BoNTs using the above described in vitro system. Because of its high sensitivity, rapid readout, and ease of use an in vitro systems based on the present invention is also suitable for screening toxin inhibitors. Specifically, a suitable BoNT substrate-FRET construct is exposed to a corresponding BoNT, in the presence of a candidate inhibitor substance, and changes in FRET signals are monitored to determine whether the candidate inhibits the activities of the BoNT.

The present invention further provides for a method for detecting a BoNT using a cell-based system for detecting BoNTs and further for screening for inhibitors of BoNTs. A suitable BoNT substrate-FRET construct as described above is expressed inside a cell, and the cell is then exposed to a sample suspected of containing a BoNT, and changes in FRET signals are then monitored as an indication of the presence/absence or concentration of the BoNT. Specifically, a decrease in FRET signals indicates that the sample contains a corresponding BoNT.

Cell-based high-throughput screening assays have the potential to reveal not only agents that can block proteolytic activity of the toxins, but also agents that can block other steps in the action of the toxin such as binding to its cellular receptor(s), light chain translocation across endosomal membranes and light chain refolding in the cytosol after translocation.

The present invention further provides a method for screening for inhibitors of BoNTs using the above described cell-based system. Specifically, a cell expressing a suitable BoNT substrate-FRET construct is exposed to a corresponding BoNT, in the presence of a candidate inhibitor substance, and changes in FRET signals are monitored to determine whether the candidate inhibits the activities of the BoNT. Compared to other in vitro based screening methods which can only identify direct inhibitors of toxin-substrate interac-

tion, the cell-based screening method of the present invention further allows for the screening for inhibitors of other toxin-related activities, such as but not limited to toxin-membrane receptor binding, membrane translocation, and intra cellular toxin movement.

According to a preferred embodiment, a recombinant nucleic acid molecule, preferably an expression vector, encoding a BoNT substrate polypeptide and two suitable FRET-affecting fluorescent peptides is introduced into a suitable host cell. An ordinarily skilled person can choose a suitable expression vector, preferably a mammalian expression vector for the invention, and will recognize that there are enormous numbers of choices. For example, the pcDNA series of vectors, such as pCI and pSi (from Promega, Madison, Wis.), CDM8, pCeo4. Many of these vectors use viral promoters. Preferably, inducible promoters are used, such as the tet-off and tet-on vectors from BD Biosciences (San Jose, Calif.).

Many choices of cell lines are suitable as the host cell for the present invention. Preferably, the cell is of a type in which the respective BoNT exhibits its toxic activities. In other words, the cells preferably displays suitable cell surface receptors, or otherwise allow the toxin to be translocated into the cell sufficiently efficiently, and allow the toxin to cleave the suitable substrate polypeptide. Specific examples include primary cultured neurons (cortical neuron, hippocampal neuron, spinal cord motor neuron, etc); PC12 cells or derived PC12 cell lines; primary cultured chromaphin cells; several cultured neuroblastoma cell lines, such as murine cholinergic Neuro 2a cell line, human adrenergic SK-N-SH cell line, and NS-26 cell line. See e.g. Foster and Stringer (1999), Genetic Regulatory Elements Introduced Into Neural Stem and Progenitor Cell Populations, Brain Pathology 9: 547-567.

The coding region for the substrate-FRET polypeptide is under the control of a suitable promoter. Depending on the types of host cells used, many suitable promoters are known and readily available in the art. Such promoters can be inducible or constitutive. A constitutive promoter may be selected to direct the expression of the desired polypeptide of the present invention. Such an expression construct may provide additional advantages since it circumvents the need to culture the expression hosts on a medium containing an inducing substrate. Examples of suitable promoters would be LTR, SV40 and CMV in mammalian systems; *E. coli* lac or trp in bacterial systems; baculovirus polyhedron promoter (polh) in insect systems and other promoters that are known to control expression in eukaryotic and prokaryotic cells or their viruses. Examples of strong constitutive and/or inducible promoters which are preferred for use in fungal expression hosts are those which are obtainable from the fungal genes for xylanase (xlnA), phytase, ATP-synthetase, subunit 9 (oliC), triose phosphate isomerase (tpi), alcohol dehydrogenase (AdhA),  $\alpha$ -amylase (amy), amyloglucosidase (AG—from the glaA gene), acetamidase (amdS) and glyceraldehyde-3-phosphate dehydrogenase (gpd) promoters. Examples of strong yeast promoters are those obtainable from the genes for alcohol dehydrogenase, lactase, 3-phosphoglycerate kinase and triosephosphate isomerase. Examples of strong bacterial promoters include SP02 promoters as well as promoters from extracellular protease genes.

Hybrid promoters may also be used to improve inducible regulation of the expression construct. The promoter can additionally include features to ensure or to increase expression in a suitable host. For example, the features can be conserved regions such as a Pribnow Box or a TATA box. The promoter may even contain other sequences to affect (such as to maintain, enhance or decrease) the levels of expression of

the nucleotide sequence of the present invention. For example, suitable other sequences include the Shl-intron or an ADH intron. Other sequences include inducible elements—such as temperature, chemical, light or stress inducible elements. Also, suitable elements to enhance transcription or translation may be present. An example of the latter element is the TMV 5' signal sequence (see Sleat, 1987, Gene 217: 217-225; and Dawson, 1993, Plant Mol. Biol. 23: 97).

The expression vector may also contain sequences which act on the promoter to amplify expression. For example, the SV40, CMV, and polyoma cis-acting elements (enhancer) and a selectable marker can provide a phenotypic trait for selection (e.g. dihydrofolate reductase or neomycin resistance for mammalian cells or ampicillin/tetracycline resistance for *E. coli*). Selection of the appropriate vector containing the appropriate promoter and selection marker is well within the level of those skilled in the art.

Preferably the coding region for the substrate-FRET polypeptide is under the control of an inducible promoter. In comparison to a constitutive promoter, an inducible promoter is preferable because it allows for suitable control of the concentration of the reporter in the cell, therefore the measurement of changes in FRET signals are greatly facilitated.

For example, FRET reporter can be controlled using the Tet-on & Tet-off system (BD Biosciences, San Jose, Calif.). Under the control of this promoter, gene expression can be regulated in a precise, reversible and quantitative manner. Briefly, for Tet-on system, the transcription of downstream gene only happens when doxycycline is present in the culture medium. After the transcription for a certain period of time, we can change culture medium to deplete doxycycline, thus, stop the synthesis of new FRET reporter proteins. Therefore, there is no background from newly synthesized FRET proteins, and we may be able to see a faster change after toxin treatment.

Fluorescent analysis can be carried out using, for example, a photon counting epifluorescent microscope system (containing the appropriate dichroic mirror and filters for monitoring fluorescent emission at the particular range), a photon counting photomultiplier system or a fluorometer. Excitation to initiate energy transfer can be carried out with an argon ion laser, a high intensity mercury (Hg) arc lamp, a fiber optic light source, or other high intensity light source appropriately filtered for excitation in the desired range. It will be apparent to those skilled in the art that excitation/detection means can be augmented by the incorporation of photomultiplier means to enhance detection sensitivity. For example, the two photon cross correlation method may be used to achieve the detection on a single-molecule scale (see e.g. Kohl et al., Proc. Nat'l. Acad. Sci., 99:12161, 2002).

A number of parameters of fluorescence output may be measured. They include: 1) measuring fluorescence emitted at the emission wavelength of the acceptor (A) and donor (D) and determining the extent of energy transfer by the ratio of their emission amplitudes; 2) measuring the fluorescence lifetime of D; 3) measuring the rate of photobleaching of D; 4) measuring the anisotropy of D and/or A; or 5) measuring the Stokes shift monomer/excimer fluorescence. See e.g. Mochizuki et al., (2001) "Spatio-temporal images of growth-factor-induced activation of Ras and Rap1." Nature 411:1065-1068, Sato et al. (2002) "Fluorescent indicators for imaging protein phosphorylation in single living cells." Nat Biotechnol. 20:287-294.

In another embodiment, the present invention provides a method for detecting BoNTs using surface plasmon resonance imaging (SPRi) techniques. Surface plasmon resonance (SPR) is an established optical technique for the detec-

tion of molecular binding, based on the generation of surface plasmons in a thin metal film (typically gold) that supports the binding chemistry. Surface plasmons are collective oscillations of free electrons constrained in the metal film. These electrons are excited resonantly by a light field incident from a highly refractive index prism. The angle of incidence  $q$  over which this resonant excitation occurs is relatively narrow, and is characterized by a reduction in the intensity of the reflected light which has a minimum at the resonant angle of incidence  $q_r$ . The phase of the reflected light also varies nearly linearly with respect to  $q$  in this region. The value of  $q_r$  is sensitive to the refractive index of the medium that resides within a few nanometers of the metal film. Small variations in the refractive index, due to the binding of a molecule to the film, or due to the change in the molecular weight of the bound molecules, may therefore be detected as a variation of this angle. Many methods are known in the art for anchoring biomolecules to metal surfaces, for detecting such anchoring and measuring SPRi are known in the art, see e.g. U.S. Pat. No. 6,127,129 U.S. Pat. No. 6,330,062, and Lee et al., 2001, Anal. Chem. 73: 5527-5531, Brockman et al., 1999, J. Am. Chem. Soc. 121: 8044-8051, and Brockman et al., 2000, Annu. Rev. Phys. Chem. 51: 41-63, which are all incorporated herein by reference in their entirety.

In practice a layer of BoNT target peptides may be deposited on the metal. A sample suspected of containing a corresponding BoNT is applied to the composite surface, and incubated to allow the toxin, if present, to cleave the bound target peptides. The cleavage will result in the decrease of the molecular weight of the peptide bound to the metal surface, which decrease can then be detected using standard equipments and methods. A decrease in the thickness of the bound layer indicates that cleavage has occurred and in consequence, the sample contains the toxin corresponding to the target peptide.

Alternatively, binding of a BoNT protein to its corresponding substrate peptide, which is anchored to the metal surface, will also cause a change in the refractive index and can be detected by known SPRi techniques and apparatus.

Many methods are known in the art for anchoring or depositing protein or peptides molecules on to a metal surface. For example, add an extra Cys residue can be added to the end of the peptide, which can then be crosslinked onto the metal surface. Indirectly, an antibody can be anchored first to the metal surface, and to which antibody the toxin substrate can be bound. Indirect anchoring via antibodies is suitable for the present invention so long as the antibody-substrate binding does not prevent the toxin from recognizing and accessing the cleavage site of the substrate. Furthermore, nickel-NTA or glutathione that can be used to hold down his6 or GST fusion proteins, respectively. Additional information regarding anchoring peptide to metal surface may be found in Wegner et al, (2002) Characterization and Optimization of Peptide Arrays for the Study of epitope-Antibody Interactions Using Surface Plasmon Resonance Imaging" Analytical Chemistry 74:5161-5168, which is also incorporated herein by reference in its entirety.

Changes of about 10-16 bases in a nucleic acid molecule, corresponding to 3,000 to 6,400 d in molecular weight, can be easily detected by SPRi. This implies that a change of as few as 16 amino acid residues in a peptide molecule can be detected. This high sensitivity allows the anchoring of a short peptide substrate onto the surface, instead of using the full-length toxin substrate proteins. Short peptide fragments are

preferred because they are more stable, less expensive to prepare and allow higher reaction specificity.

## EXAMPLES

### Materials and Methods

Construction of bio-sensor DNA constructs: YFP cDNA (Clontech) was inserted into the pECFP-C1 vector (Clontech) using EcoRI and BamHI site to generate pECFP-YFP vector. cDNA encoding amino acid 33-94 of rat syb II was amplified using PCR and into pECFP-YFP vector using XhoI and EcoRI sites, which are between CFP and YFP gene, to generate CFP-SybII-YFP (also referred to as CFP-Syb (33-94)-YFP) construct that can be used to transfect cells. Construct CFP-SNAP-25-YFP (also referred to as CFP-SNAP-25 (141-206)-YFP) was built using the same method, but using residues 141-206 of SNAP-25. A construct (CFP-SNAP25FL-YFP) with full-length rat SNAP-25B as the linker was also made. In order to purify recombinant chimera proteins using bacteria *E. coli*, we also moved CFP-SybII-YFP gene and CFP-SNAP-25-YFP gene from pECFP-YFP vector into a pTrec-his (Invitrogen) vector using NheI and BamHI sites.

The mutation of four Cys residues of SNAP-25 to Ala was accomplished by site-directed mutagenesis using PCR, and the fragment was then inserted between CFP and YFP as described above. SNAP-25(83-120)-CFP-SNAP-25(141-206)-YFP were built by first inserting the cDNA fragment that encoding the residues 83-120 of SNAP-25 into the XhoI/EcoRI sites of pEYFP-N1(Clontech), and then subcloning CFP-SNAP-25(141-206) cDNA into downstream sites using EcoRI/BamHI. YFP-Syb(FL)-CFP was built by first inserting a full length Syb II cDNA into pECFP-C1 vectors at EcoRI and BamHI sites, and then inserting a full length YFP cDNA into the upstream at XhoI and EcoRI sites. YFP-Syb(33-116)-CFP was built by replacing full-length Syb in YFP-Syb(FL)-CFP construct via EcoRI/BamHI sites. All cDNA fragments were generated via PCR.

Protein purification and fluorescence spectra acquisition: His<sub>6</sub>-tagged CFP-SybII-YFP and CFP-SNAP-25-YFP proteins were purified as described (Chapman et al., A novel function for the second C2 domain of synaptotagmin. Ca<sup>2+</sup>-triggered dimerization. *J. Biol. Chem.* 271, 5844-5849 (1996)). Proteins were dialyzed using HEPES buffer (50 mM HEPES, pH 7.1) overnight. 300 nM protein was put into a cuvette in a total volume of 500  $\mu$ l HEPES buffer that contains 2 mM DTT and 10  $\mu$ M ZnCl<sub>2</sub>. The emission spectra from 450 nM to 550 nM was collected using a PTIQM-1 fluorometer. The excitation wavelength is 434 nM, which is the optimal excitation wavelength for CFP.

Activation of Botulinum neurotoxin and monitoring the cleavage of bio-sensor proteins: BoNT/A, B, E or F was incubated with 2 mM DTT and 10  $\mu$ M ZnCl<sub>2</sub> for 30 min at 37° C. to reduce the toxin light chain from the heavy chain. For experiments using a PTIQM-1 fluorometer, 10 nM BoNT/A, E, or 50 nM BoNT/B, F were added into the cuvette that contains 300 nM corresponding FRET sensors. The emission spectra were collected as described above, at certain time intervals after adding toxins (e.g. 0, 2, 5, 10, 30, 60, 90 min). At the end of each emission scan, a small portion of the sample (30  $\mu$ l) was collected, mixed with SDS-loading buffer, and later subjected onto a SDS-page gel. The sensor protein and the cleavage products were visualized with an anti-his<sub>6</sub> antibody using enhanced chemiluminescence (ECL) (Pierce).

For experiments using a spectrofluorometer, 300 nM FRET sensor protein were prepared in a 100  $\mu$ l volume per well in a 96-well plate. Various concentrations of BoNTs

were added into each well, and samples were excited at 434 nM. The emission spectra of YFP channel (527 nM), and CFP channel (470 nM) were collected for 90 min at 30 sec interval. The FRET ratio is determined by the ratio between YFP channel and CFP channel for each data point.

Measure the FRET ratio change in live cells after toxin treatment DNA constructs pECFP-SNAP25-YFP were used to transfect PC12 cells using electroporation (Bio-Rad). Cells were passed 24 hrs. after the transfection, and 50 nM BoNT/A were added into the culture medium. After incubation for 72 hours with toxin, the fluorescence images of cells that express FRET sensor were collected using a Nikon TE-300 microscope. Two images of each cell (CFP channel and FRET channel) were collected using the following filter set (Chroma Inc.): CFP channel: CFP excitation filter (436/10 nm), JP4 beamsplitter, CFP emission filter: (470/30 nm); FRET channel: CFP excitation filter (436/10 nm), JP4 beamsplitter, YFP emission filter (535/30 nm). The background (the areas that contain no cells) was subtracted from each image, and the fluorescence intensities of CFP channel and FRET channel of each cell were compared using MetaMorph software. The FRET ratio is determined by the intensity ratio between FRET channel and CFP channel as previous described. Control cells were not treated with toxins but were analyzed in an identical manner. To test BoNT/B in live cells, we transfected a PC12 cell line that express syt II using the same procedure as described above.

Live cell imaging and FRET analysis: PC12 cells were transfected with various cDNA constructs indicated in the Figure legends via electroporation (Bio-Rad, CA). The fluorescence images were collected using a Nikon TE-300 microscope with a 100 $\times$  oil-immersed objective. CFP/YFP FRET in live cells was quantified using an established method with the three-filter set method (Gordon et al., Quantitative fluorescence resonance energy transfer measurements using fluorescence microscopy. *Biophys J.* 74, 2702-2713 (1998); Sorokin et al., Interaction of EGF receptor and grb2 in living cells visualized by fluorescence resonance energy transfer (FRET) microscopy. *Curr. Biol.* 10, 1395-1398 (2000)). In brief, three consecutive images were acquired for each cell, through three different filter sets: CFP filter (excitation, 436/10 nm; emission, 470/30 nm), FRET filter (excitation, 436/10 nm; emission, 535/30 nm), and YFP filter (excitation, 500/20 nm, emission, 535/30 nm). A JP4 beam splitter (Set ID 86000, Chroma Inc. VT) was used. All images were acquired with exact the same settings (4 $\times$ 4 Binning, 200 ms exposure time). In order to exclude the concentration-dependent FRET signal that can arise from high expression level of fluorescence proteins, only cells with CFP and YFP intensities below the half value of the maximal 12-bit scale (1-2097 gray scale) were counted in our experiments (Miyawaki et al., Monitoring protein conformations and interactions by fluorescence resonance energy transfer between mutants of green fluorescent protein. *Methods Enzymol.* 327, 472-500 (2000); Erickson et al., DsRed as a potential FRET partner with CFP and GFP. *Biophys J* 85, 599-611 (2003)). The background (from areas that did not contain cells) was subtracted from each raw image before FRET values were calculated. The fluorescence intensity values of each image were then obtained and compared. PC12 cells transfected with CFP or YFP alone were first tested in order to obtain the crosstalk value for these filter sets. The FRET filter channel exhibits about 56-64% of bleed-through for CFP, and about 24% for YFP. There is virtually no crosstalk for YFP while using the CFP filter, or for CFP while using the YFP filter, which greatly simplified the FRET calculations. For cells expressing toxin sensors, the "corrected FRET" value was calculated using the following equation:

21

corrected FRET=FRET-(CFP×0.60)-(YFP×0.24), where FRET, CFP and YFP correspond to fluorescence intensity of images acquired through FRET, CFP and YFP filter sets, respectively. The average fraction of bleed-through coming from CFP and YFP fluorescence are 0.6 and 0.24, respectively, when acquiring image through the FRET filter set. Because toxin cleavage of the CFP-SNAP25FL-YFP sensor resulted in the membrane dissociation of YFP fragment, which was degraded in the cytosol (FIG. 7c, e), the FRET ratio used in our data analysis is calculated as normalizing “corrected FRET” value to only the CFP fluorescence intensity (corrected FRET/CFP). We note that the CFP intensity in these calculations was an underestimate due to donor quenching if FRET occurred. However, it has been reported the decrease in CFP fluorescence because of donor quenching is only about 5-10% (Gordon et al., Quantitative fluorescence resonance energy transfer measurements using fluorescence microscopy. *Biophys J* 74, 2702-2713 (1998); Sorkina et al., Oligomerization of dopamine transporters visualized in living cells by fluorescence resonance energy transfer microscopy. *J. Biol. Chem.* 278, 28274-28283 (2003)). All images and calculations were performed using MetaMorph software (Universal Imaging Corp., PA).

For experiments involving toxin treatment, indicated holotoxins were added to the cell culture media for various time, and cells were then analyzed as described above. Control cells were transfected with toxin sensors but not treated with toxins, and they were analyzed in an identical manner.

Immunoblot analysis of toxin substrate cleavage: Wild type PC12 cells or Syt II+PC12 cells (Dong et al., 2003, supra) were transfected with various toxin sensor cDNA constructs as indicated in the Figure legends. BoNT/A or B was added to the culture medium 24 h after transfection and cells were incubated for another 48 hrs. Cells were then harvested and cell lysates were subject to immunoblot analysis as described previously. Control cells were transfected with the same cDNA constructs and assayed in parallel except they were not treated with toxins. One third of the control cell lysates were treated with toxins in vitro (200 nM BoNT/A or B, 30 min at 37° C.), and subjected to immunoblot analysis. Endogenous SNAP-25 and transfected CFP-SNAP-25-YFP sensors were assayed using an anti-SNAP-25 antibody 26. CFP-SNAP-25-YFP and CFP-SybII-YFP sensor proteins were also assayed using a GFP polyclonal antibody (Santa Cruz, Calif.). An anti-his6 antibody (Qigen Inc., CA) was used to assay for recombinant sensor protein cleavage.

### Example 1

#### Bio-Sensors Based on CFP-YFP FRET Pair and Botulinum Neurotoxin Protease Activity

In order to monitor botulinum neurotoxin protease activity using FRET method, CFP and YFP protein are connected via syb II or SNAP-25 fragment, denoted as CFP-SybII-YFP and CFP-SNAP-25-YFP, respectively (FIG. 1A). Short fragments of toxin substrates were used instead of the full-length protein to optimize the CFP-YFP energy transfer efficiency, which falls exponentially as the distance increases. However, the cleavage efficiency by BoNTs decreases significantly as the target protein fragments get too short. Therefore, the region that contain amino acid 33-96 of synaptobrevin sequence was used because it has been reported to retain the same cleavage rate by BoNT/B, F, and TeNT as the full length synaptobrevin protein does. Similarly, residues 141-206 of SNAP-25 were selected to ensure that the construct can still be recognized and cleaved by BoNT/A and E.

22

The FRET assay is depicted in FIG. 1B. When excited at 434 nM (optimal excitation wavelength for CFP), the CFP-SybII-YFP and CFP-SNAP-25-YFP chimera protein would elicit YFP fluorescence emission because of the FRET between CFP-YFP pair. Botulinum neurotoxins can recognize and cleave the short substrate fragments between CFP and YFP, and FRET signal will be abolished after CFP and YFP are separated. Because these chimera proteins can be expressed in living cells, they are also denoted as “bio-sensor” for botulinum neurotoxins.

We first purified his<sub>6</sub>-tagged recombinant chimera protein of CFP-SybII-YFP, and CFP-SNAP-25-YFP, and characterized their emission spectra using a PTIQM-1 fluorometer. As expected, both bio-sensor proteins show an obvious YFP fluorescence peak at 525 nM when their CFP were excited at 434 nM (FIG. 2B, C). On the contrary, the YFP alone only gave small fluorescence signal when excited directly at 434 nM (FIG. 2A). The mixture of individual CFP and YFP doesn't have the peak emission at 525 nM (FIG. 2A). This demonstrated the YFP fluorescence peak observed using bio-sensor proteins resulted from FRET. Because the FRET ratio (YFP fluorescence intensity/CFP fluorescence intensity) was affected by many factors, such as buffer composition, the Zn<sup>2+</sup> concentration and the concentration of reducing agents (data not shown), the experiments thereafter were all carried out in the same buffer conditions (50 mM Hepes, 2 mM DTT, 10 μM ZnCl<sub>2</sub>, pH 7.1). 2 mM DTT and 10 μM Zn<sup>2+</sup> were added to optimize the botulinum neurotoxin protease activity.

### Example 2

#### Monitoring the Cleavage of Bio-Sensor Proteins by Botulinum Neurotoxins In Vitro

300 nM chimera protein CFP-SybII-YFP was mixed with 50 nM pre-reduced BoNT/B holotoxin in a cuvette. The emission spectra were collected at different time points after adding BoNT/B (0, 2, 5, 10, 30, 60 min, etc). At the end of each scan, a small volume of sample (30 μl) was taken out from the cuvette and mixed with SDS-loading buffer. These samples later were subjected to SDS-page gels and the cleavage of chimera proteins were visualized using an antibody against the his<sub>6</sub> tag in the recombinant chimera protein. As shown in FIG. 3A, the incubation of bio-sensor protein with BoNT/B resulted in a decrease of YFP emission and increase of CFP emission. The decrease of FRET ratio is consistent with the degree of cleavage of the chimera protein by BoNT/B (FIG. 3A, low panel). This result demonstrates the cleavage of the bio-sensor protein can be monitored in real time by recording the change in its FRET ratio.

The same assay was performed to detect CFP-SybII-YFP cleavage by BoNT/F, and CFP-SNAP-25-YFP cleavage by BoNT/A or E (FIG. 3B, C, D). Similar results were obtained with the experiment using BoNT/B. In all cases, we observed the same kinetics of cleavage of the substrate using both the optical readout and the immunoblot blot analysis. BoNT/A and E cleaved their chimera substrate much faster than BoNT/B and F did in our assay. Thus, only 10 nM BoNT/A or E were used in order to record the change occurred within first several minutes. The cleavage of chimera protein is specific, since mixing BoNT/B and F with CFP-SNAP-25-YFP, or mixing BoNT/A and E with CFP-SybII-YFP did not result in any change in FRET ratio or substrate cleavage (data not shown).

## 23

## Example 3

## Monitoring Botulinum Neurotoxin Protease Activity in Real Time Using a Microplate Spectrofluorometer

The above experiments demonstrated that the activity of botulinum neurotoxin can be detected in vitro by monitoring the changes of the emission spectra of their target bio-sensor proteins. We then determined if we could monitor the cleavage of bio-sensor proteins in real time using a microplate reader—this will demonstrate the feasibility to adapt this assay for future high-throughput screening. As shown in FIG. 4A, 300 nM CFP-SNAP-25-YFP chimera protein was mixed with 10 nM BoNT/A in a 96-well plate. CFP was excited at 436 nm and the fluorescence of the CFP channel (470 nm) and YFP channel (527 nm) were recorded over 90 min at 30 sec intervals. Addition of BoNT/A resulted in the decrease of YFP channel emission and the increase of CFP channel emission. This result enabled us to trace the kinetics of botulinum neurotoxin enzymatic activity in multiple samples in real time. For instance, as shown in FIG. 4B, various concentration of BoNT/A or E were added into 300 nM CFP-SNAP-25-YFP, and the FRET ration of each sample were monitored simultaneously as described in FIG. 4A. Changes in the FRET ratio were related to the toxin concentration—higher toxin concentration resulted in faster decrease of the FRET ratio. This change in FRET ratio is specific, because no significant change was detected for either CFP-SNAP-25-YFP alone (FIG. 4C left panel) or a mixture of CFP and YFP (FIG. 4C right panel).

Although it would be difficult to correlate the FRET ratio change with the actual cleavage of the bio-sensor proteins at this stage, this method still provides the easiest way to compare toxin cleavage kinetics among multiple samples when these samples were prepared and scanned simultaneously—it is particularly useful for high throughput screening toxin inhibitors because it would provide information about how the inhibitor affects toxin enzymatic activities. We note that the unit for each kinetic parameter would be the FRET ratio instead of substrates concentration in these cases.

The sensitivity of this FRET based assay is determined by incubating various concentrations of toxins with fixed amount of their target bio-sensor proteins for certain period of time. The FRET ratio is recorded using a microplate spectrofluorometer, and plotted against toxin concentration. As shown in FIG. 5A, this method has similar sensitivities for BoNT/A and E after 4 hours incubation (EC<sub>50</sub> for BoNT/A is 15 pM, and for BoNT/E is 20 pM, upper panel), and incubation for 16 hours slightly increased the detection sensitivity (FIG. 5A, lower panel). The sensitivities for BoNT/B and F are close to each other, but are about 10 times lower than BoNT/A and E with 4 hours incubation (FIG. 5B, upper panel, EC<sub>50</sub> is 242 pM for BoNT/B, and 207 pM for BoNT/F). Extension of the incubation period to 16 hours increased the ability to detect BoNT/B and BoNT/F activity by 8-fold and 2-fold, respectively.

## Example 4

## Monitoring Botulinum Neurotoxin Activity in Live Cells

CFP-YFP based bio-sensor assay not only can be used to detect botulinum neurotoxin in vitro, but also can be used in live cells. To establish this application, PC 12 cells were transfected with CFP-SNAP-25-YFP. PC12 cell is a neuroendocrine cell line that is able to take up BoNT/A and E. Trans-

## 24

ected cells were incubated with BoNT/A (50 nM) for 72 hours, and the FRET ratio of cells that express CFP-SNAP25-YFP were recorded using a epi-fluorescence microscope equipped with special filter sets for CFP-YFP FRET detection. Briefly, the FRET ratio is calculated as the ratio between the fluorescence intensity of the images from the same cell collected using two filter sets, one for CFP (excitation 437 nm/emission 470 nm), and another for FRET (excitation 437 nm/emission 535 nm). A total number of 53 cells were collected, and compared to the same number of control cells which express the same bio-sensor protein but were not exposed to toxin. As shown in FIG. 6A, BoNT/A treatment for 72 hours significantly decreased FRET ratio for the cell population that was examined ( $p < 1.47E-05$ ). Wild type PC12 cells are not sensitive to BoNT/B and F.

A PC12 cell line was recently created that expresses both synaptotagmin II, a receptor for BoNT/B, and CFP-SyBII-YFP bio-sensor. These cells were used to detect BoNT/B action in live cells. As shown in FIG. 6B, BoNT/B (30 nM) treatment for 72 hours significantly decreased FRET ratio of the bio-sensor proteins expressed in cells ( $p < 2.1E-10$ ). We note that there were still large number of cells that do not appear to change FRET ratio for both bio-sensor proteins. There are several possible explanations. First, the toxin/bio-sensor protein ratio may be too low in these cells, thus, the significant cleavage of bio-sensor proteins may require a longer incubation time. Second, these cells may have high level of protein synthesis activity, thus new bio-sensor protein was synthesis quickly to replace cleavage products. Nevertheless, these experiments demonstrate the feasibility to adopt this FRET based assay in living cells and neurons.

## Example 5

## Cell Based Detection of BoNTs

To carry out cell-based studies, we first transfected PC12 cells with CFP-SNAP-25(141-206)-YFP sensor (FIG. 7a). The FRET signal in living cells was acquired using an established three-filter set method with an epi-fluorescence microscope as shown in FIG. 2a (Gordon, et al., Quantitative fluorescence resonance energy transfer measurements using fluorescence microscopy. *Biophys. J.* 74, 2702-2713 (1998); and Sorkin et al., Interaction of EGF receptor and grb2 in living cells visualized by fluorescence resonance energy transfer (FRET) microscopy. *Curr. Biol.* 10, 1395-1398 (2000), as described above in the Materials and Methods Section. Transfected PC12 cells were treated with 50 nM BoNT/A for 96 hrs. Their fluorescence images were analyzed and the normalized FRET ratio (corrected FRET/CFP) was plotted in FIG. 7b. Although SNAP-25(141-206) fragments were reported to have similar toxin cleavage rates as full length SNAP-25 in vitro (Washbourne et al., Botulinum neurotoxin types A and E require the SNARE motif in SNAP-25 for proteolysis. *FEBS Lett.* 418, 1-5 (1997)), CFP-SNAP-25 (141-206)-YFP appeared to be a poor toxin substrate in living cells. Incubation of BoNT/A (50 nM) for 96 hr exhibited a small (but significant) shift in the FRET ratio among the cell population, indicating the cleavage is inefficient in cells, and this sensor is not practical for toxin detection in cells.

Surprisingly, we found that using full length SNAP-25 as the linker between CFP and YFP yielded significant levels of FRET when expressed in PC12 cells, despite the fact that SNAP-25 is 206 amino acid residues long (FIG. 7c, and 8c). This FRET signal is dependent on the membrane anchor of SNAP-25 since mutation of the palmitoylation sites within SNAP-25 (Cys 85, 88, 90, 92 Ala) (Lane & Liu, Character-

ization of the palmitoylation domain of SNAP-25. *J. Neurochem.* 69, 1864-1869 (1997); Gonzalo et al., SNAP-25 is targeted to the plasma membrane through a novel membrane-binding domain. *J. Biol. Chem.* 274, 21313-21318 (1999); Koticha et al., Plasma membrane targeting of SNAP-25 increases its local concentration and is necessary for SNARE complex formation and regulated exocytosis. *J. Cell Sci.* 115, 3341-3351 (2002); Gonelle-Gispert et al., Membrane localization and biological activity of SNAP-25 cysteine mutants in insulin-secreting cells. *J. Cell Sci.* 113 (Pt 18), 3197-3205 (2000)), which results in the cytosolic distribution of the protein (denoted as CFP-SNAP-25(Cys-Ala)-YFP), significantly reduced the FRET signal (FIG. 7d). This finding suggests the membrane anchoring of SNAP-25 may result in conformational changes that bring N-terminus and C-terminus of SNAP-25 close to each other. This sensor is denoted as CFP-SNAP-25(FL)-YFP. Incubation of cells that express CFP-SNAP-25(FL)-YFP with 50 nM BoNT/A resulted in a progressive decrease in the FRET ratio over time (FIG. 7c, right panel). BoNT/A cleavage of the sensor resulted in two fragments: an N-terminal fragment of SNAP-25 tagged with CFP that remained on the membrane (FIG. 2c, middle panel), and a short C-terminal fragment of SNAP-25 tagged with YFP that was expected to redistribute into the cytosol after toxin cleavage. Interestingly, we noticed the C-terminal cleavage product, SNAP-25(198-206)-YFP, largely disappeared after the toxin cleavage (FIG. 2c, the "YFP" frame in the middle panel). This observation was confirmed by immunoblot analysis (FIG. 7e), indicating this soluble fragment was degraded much faster than the other fragment that is retained on the membrane. This unexpected result provides an alternative way to detect toxin activity in living cells by simply monitoring the ratio between CFP and YFP fluorescence.

It was recently reported that the BoNT/A light chain contains membrane localization signals and targets to the plasma membrane in differentiated PC12 cells (Fernandez-Salas et al., Plasma membrane localization signals in the light chain of botulinum neurotoxin. *Proc. Natl. Acad. Sci. USA* 101, 3208-3213 (2004)). Thus, we investigated the possibility that membrane anchoring of SNAP-25 is critical for efficient cleavage by BoNT/A. To directly test this idea, CFP-SNAP-25(Cys-Ala)-YFP, which was distributed in the cytosol (FIG. 7d), and CFP-SNAP-25(FL)-YFP, which was anchored to the plasma membrane, were used to transfect PC12 cells and assayed in parallel for the cleavage by BoNT/A in cells. As indicated in FIG. 7e, incubation of cells with BoNT/A resulted in the cleavage of significant amount of CFP-SNAP-25(FL)-YFP sensor, while there was no detectable cleavage of CFP-SNAP-25 (Cys-Ala)-YFP under the same assay conditions.

To further confirm this finding, we also targeted the inefficient sensor that contains SNAP-25(141-206) to the plasma membrane using a short fragment of SNAP-25 (residues 83-120, which can target GFP to plasma membranes (Gonzalo et al., SNAP-25 is targeted to the plasma membrane through a novel membrane-binding domain. *J. Biol. Chem.* 274, 21313-21318 (1999)) (FIG. 8a). As expected, anchoring of the CFP-SNAP-25(141-206)-YFP sensor to the plasma membrane resulted in efficient cleavage by BoNT/A (FIG. 8b). These findings indicate that the sub-cellular localization of SNAP-25 is indeed critical for the efficient cleavage by BoNT/A in cells.

We next tested whether the CFP-Syb(33-94)-YFP sensor could be used to assay BoNT/B activity in cells. For these studies, we used a PC12 cell line that expresses synaptotagmin II, which mediates BoNT/B entry into cells (Dong et al. Synaptotagmins I and II mediate entry of botulinum neuro-

toxin B into cells. *J. Cell Biol.* 162, 1293-1303 (2003)). As shown in FIG. 9a(upper panel), transfected CFP-Syb(33-94)-YFP is a soluble protein present throughout the cells. Similar to the case of CFP-SNAP-25(141-206)-YFP, BoNT/B (50 nM, 96 hr) treatment only slightly decreased the FRET ratio (FIG. 9a, lower panel), indicating that the cleavage of this sensor is also inefficient in cells.

Our experience with the BoNT/A sensor prompted us to investigate whether the sub-cellular localization of Syb is important for cleavage of Syb by BoNT/B. Endogenous Syb is 116 amino acid residues long, and resides on secretory vesicles through a single transmembrane domain (residues 95-116, FIG. 9b). In order to ensure proper vesicular localization, we used full-length Syb as the linker between CFP and YFP. Because CFP is relatively resistant to the acidic environment in the vesicle lumen (Tsien, The green fluorescent protein. *Annu. Rev Biochem* 67, 509-544 (1998)), the CFP was fused to the C-terminus of Syb and is predicted to reside inside vesicles, while the YFP was fused to the N-terminus of Syb and faces the cytosol (FIG. 9b). This sensor is denoted as YFP-Syb(FL)-CFP. Since FRET is unlikely to occur between CFP and YFP here, a novel approach was taken to monitor the cleavage by BoNT/B. Cleavage of YFP-Syb(FL)-CFP sensor would generate two fragments, including a N-terminal portion tagged with YFP, which would be released into the cytosol, and a short C-terminal portion tagged with CFP that is restricted inside vesicles. Thus, toxin activity would result in the redistribution of YFP fluorescence in cells. YFP-Syb(FL)-CFP proved to be an efficient toxin sensor in cells. As indicated in FIG. 9c, treatment with BoNT/B resulted in the dissociation of YFP from the vesicles and its redistribution into the cytosol. We note that the soluble YFP fragment was able to enter the nucleus, where there was no fluorescence signal prior to toxin treatment (FIG. 9c), providing an area where the YFP redistribution can be readily detected. Unlike the FRET assay, this detection method does not require a short distance between CFP and YFP, thus providing a novel approach to monitor protease activity in living cells.

To exclude the possibility that the inefficient cleavage of the sensor containing Syb(33-94) fragment is due to the lack of the N-terminal 32 amino acid, a sensor containing the truncated form of Syb that lacks the N-terminal 32 residues (denoted as CFP-Syb(33-116)-YFP) was built. This sensor contains the same cytosolic domain of Syb with the inefficient sensor (residues 33-94), plus the transmembrane domain (residues 95-116), which anchors it to vesicles. When assayed in parallel, significant amount of CFP-Syb(33-116)-YFP was cleaved by BoNT/B after 48 hours, while there was no detectable cleavage of CFP-Syb(33-94)-YFP (FIG. 9d), indicating the vesicular localization determines the cleavage efficiency in cells. This conclusion is further supported by a recent report that the presence of negatively charged lipid mixtures enhanced the cleavage rate of Syb by BoNT/B, TeNT, and BoNT/F in vitro (Caccin et al., VAMP/synaptobrevin cleavage by tetanus and botulinum neurotoxins is strongly enhanced by acidic liposomes. *FEBS Lett.* 542, 132-136 (2003)). It is possible that toxins may favor binding to vesicular membranes in cells, thus increasing the chance to encounter Syb localized on vesicles. Alternatively, it is also possible that the presence of the transmembrane domain may be critical for maintaining a proper conformational state of Syb that is required for efficient cleavage.

Using full length SNAP-25 and Syb II as the linkers provided excellent optical reporters that can mirror endogenous substrate cleavage in living cells. These two reporters should be able to detect all seven botulinum neurotoxins and tetanus neurotoxin (TeNT). The substrate linker sequence can be

readily modified to achieve specific detection for individual BoNTs or TeNT by changing the length or mutating other toxin cleavage or recognition sites. These toxin biosensors should enable the cell-based screening of toxin inhibitors, and the study of toxin substrate recognition and cleavage in cells.

The foregoing description and examples have been set forth merely to illustrate the invention and are not intended to

be limiting. Since modifications of the disclosed embodiments incorporating the spirit and substance of the invention may occur to persons skilled in the art, the invention should be construed broadly to include all variations falling within the scope of the appended claims and equivalents thereof. All references cited hereinabove and/or listed below are hereby expressly incorporated by reference.

---

SEQUENCE LISTING

<160> NUMBER OF SEQ ID NOS: 11

<210> SEQ ID NO 1

<211> LENGTH: 23

<212> TYPE: PRT

<213> ORGANISM: Artificial Sequence

<220> FEATURE:

<223> OTHER INFORMATION: Putative Minimum Recognition Sequence for BoNT/A

<400> SEQUENCE: 1

Gly Leu Ala Leu Ala Ala Ser Asn Gly Leu Asn Ala Arg Gly Ala Leu  
1 5 10 15

Ala Thr His Arg Leu Tyr Ser  
20

<210> SEQ ID NO 2

<211> LENGTH: 23

<212> TYPE: PRT

<213> ORGANISM: Artificial Sequence

<220> FEATURE:

<223> OTHER INFORMATION: Putative Minimum Recognition Sequence for BoNT/B

<400> SEQUENCE: 2

Gly Leu Tyr Ala Leu Ala Ser Glu Arg Gly Leu Asn Pro His Glu Gly  
1 5 10 15

Leu Thr His Arg Ser Glu Arg  
20

<210> SEQ ID NO 3

<211> LENGTH: 24

<212> TYPE: PRT

<213> ORGANISM: Artificial Sequence

<220> FEATURE:

<223> OTHER INFORMATION: Putative Minimum Recognition Sequence for BoNT/C (SNAP25)

<400> SEQUENCE: 3

Ala Leu Ala Ala Ser Asn Gly Leu Asn Ala Arg Gly Ala Leu Ala Thr  
1 5 10 15

His Arg Leu Tyr Ser Met Glu Thr  
20

<210> SEQ ID NO 4

<211> LENGTH: 24

<212> TYPE: PRT

<213> ORGANISM: Artificial Sequence

<220> FEATURE:

<223> OTHER INFORMATION: Putative Minimum Recognition Sequence for BoNT/C (Syntaxin)

<400> SEQUENCE: 4

Ala Ser Pro Thr His Arg Leu Tyr Ser Leu Tyr Ser Ala Leu Ala Val  
1 5 10 15

Ala Leu Leu Tyr Ser Pro His Glu



-continued

20

<210> SEQ ID NO 5  
 <211> LENGTH: 23  
 <212> TYPE: PRT  
 <213> ORGANISM: Artificial Sequence  
 <220> FEATURE:  
 <223> OTHER INFORMATION: Putative Minimum Recognition Sequence for  
 BoNT/E

<400> SEQUENCE: 5

Gly Leu Asn Ile Leu Glu Ala Ser Pro Ala Arg Gly Ile Leu Glu Met  
 1 5 10 15

Glu Thr Gly Leu Leu Tyr Ser  
 20

<210> SEQ ID NO 6  
 <211> LENGTH: 21  
 <212> TYPE: PRT  
 <213> ORGANISM: Artificial Sequence  
 <220> FEATURE:  
 <223> OTHER INFORMATION: Putative Minimum Recognition Sequence for  
 BoNT/F

<400> SEQUENCE: 6

Gly Leu Ala Arg Gly Ala Ser Pro Gly Leu Asn Leu Tyr Ser Leu Glu  
 1 5 10 15

Ser Glu Arg Gly Leu  
 20

<210> SEQ ID NO 7  
 <211> LENGTH: 206  
 <212> TYPE: PRT  
 <213> ORGANISM: Homo sapiens

<400> SEQUENCE: 7

Met Ala Glu Asp Ala Asp Met Arg Asn Glu Leu Glu Glu Met Gln Arg  
 1 5 10 15

Arg Ala Asp Gln Leu Ala Asp Glu Ser Leu Glu Ser Thr Arg Arg Met  
 20 25 30

Leu Gln Leu Val Glu Glu Ser Lys Asp Ala Gly Ile Arg Thr Leu Val  
 35 40 45

Met Leu Asp Glu Gln Gly Glu Gln Leu Asp Arg Val Glu Glu Gly Met  
 50 55 60

Asn His Ile Asn Gln Asp Met Lys Glu Ala Glu Lys Asn Leu Lys Asp  
 65 70 75 80

Leu Gly Lys Cys Cys Gly Leu Phe Ile Cys Pro Cys Asn Lys Leu Lys  
 85 90 95

Ser Ser Asp Ala Tyr Lys Lys Ala Trp Gly Asn Asn Gln Asp Gly Val  
 100 105 110

Val Ala Ser Gln Pro Ala Arg Val Val Asp Glu Arg Glu Gln Met Ala  
 115 120 125

Ile Ser Gly Gly Phe Ile Arg Arg Val Thr Asn Asp Ala Arg Glu Asn  
 130 135 140

Glu Met Asp Glu Asn Leu Glu Gln Val Ser Gly Ile Ile Gly Asn Leu  
 145 150 155 160

Arg His Met Ala Leu Asp Met Gly Asn Glu Ile Asp Thr Gln Asn Arg  
 165 170 175

Gln Ile Asp Arg Ile Met Glu Lys Ala Asp Ser Asn Lys Thr Arg Ile  
 180 185 190

Asp Glu Ala Asn Gln Arg Ala Thr Lys Met Leu Gly Ser Gly  
195 200 205

<400> SEQUENCE: 8

[illegible]

<400> SEQUENCE: 9

[illegible]

<400> SEQUENCE: 10

Gln	Gln	Thr	Gln	Ala	Gln	Val	Asp	Glu	Val	Val	Asp	Ile	Met	Arg	Val
1				5					10					15	
Asn	Val	Asp	Lys	Val	Leu	Glu	Arg	Asp	Gln	Lys	Leu	Ser	Glu	Leu	Asp
			20					25					30		
Asp	Arg	Ala	Asp	Ala	Leu	Gln	Ala	Gly	Ala	Ser	Gln	Phe	Glu	Thr	Ser
		35					40					45			
Ala	Ala	Lys	Leu	Lys	Arg	Lys	Tyr	Trp	Trp	Lys	Asn	Leu	Lys	Met	Met
	50					55					60				
Ile	Ile	Leu	Gly	Val	Ile	Cys	Ala	Ile	Ile	Leu	Ile	Ile	Ile	Ile	Val
65					70				75					80	

-continued

Tyr Phe Ser Thr

&lt;210&gt; SEQ ID NO 11

&lt;211&gt; LENGTH: 38

&lt;212&gt; TYPE: PRT

&lt;213&gt; ORGANISM: Homo sapiens

&lt;400&gt; SEQUENCE: 11

Lys Cys Cys Gly Leu Phe Ile Cys Pro Cys Asn Lys Leu Lys Ser Ser  
 1 5 10 15

Asp Ala Tyr Lys Lys Ala Trp Gly Asn Asn Gln Asp Gly Val Val Ala  
 20 25 30

Ser Gln Pro Ala Arg Val  
 35

What is claimed is:

1. An isolated polynucleotide molecule encoding a molecular construct, wherein the construct is capable of anchoring to a plasma membrane or a vesicular membrane of a cell, the construct comprising (1) a linker peptide, (2) a FRET pair comprising a donor fluorophore moiety and an acceptor fluorophore moiety, and (3) a membrane-anchoring domain that directs the anchoring of the construct to the plasma or vesicular membrane of the cell, wherein the linker peptide comprises a cleavage recognition site of a botulinum neurotoxin selected from the group consisting of synaptobrevin, syntaxin and SNAP-25, and wherein the membrane-anchoring domain comprises a fragment that contains the palmitoylation site (residues 83-120) of SEQ ID NO: 7, or the transmembrane domain (residues 95-116) of SEQ ID NO: 8.

2. An expression vector comprising a polynucleotide molecule of claim 1, operably linked to a promoter.

3. An expression vector of claim 2, wherein the promoter is an inducible promoter.

4. An isolated cell comprises an isolated polynucleotide molecule of claim 1.

5. A cell of claim 4, wherein the cell is selected from the group consisting of a primary cultured neuron cell, PC12 cell or a derivative thereof, a primary cultured chromaphin cell, a neuroblastoma cell, a human adrenergic SK-N-SH cell, and a NS-26 cell line.

6. A cell of claim 5, wherein the cell is a cortical neuron cell, a hippocampal neuron cell, a spinal cord motor neuron cell, or a murine cholinergic Neuro 2a cell.

7. An isolated polynucleotide of claim 1, wherein the donor fluorophore moiety is a green fluorescent protein (GFP) or a variant thereof, and the acceptor fluorophore moiety is a corresponding variant of the green fluorescent protein.

8. The isolated polynucleotide of claim 1, wherein the palmitoylation site is fused to the N-terminus of CFP-SNAP-25(141-206)-YFP.

9. The isolated polynucleotide of claim 1, wherein the construct is CFP-SNAP-25(FL)-YFP, YFP-Syb(FL)-CFP, or CFP-Syb(33-116)-YFP, wherein, where SNAP-25(FL) is SEQ ID NO:7, Syb(FL) is SEQ ID NO:8, and Syb(33-116) is SEQ ID NO:10.

10. The isolated polynucleotide of claim 1, wherein the construct is CFP-SNAP-25(141-206)-YFP, with a fragment of SNAP-25 that contains the palmitoylation site (residues 83-120) fused to its N-terminus, wherein SNAP-25(141-206) is SEQ ID NO:9, and the palmitoylation site (residues 83-120) is SEQ ID NO:11.

11. The isolated polynucleotide of claim 1, wherein at least one of the fluorophores is selected from the group consisting of a green fluorescent protein and a variant thereof.

12. The isolated polynucleotide of claim 1, wherein one of the fluorophores is selected from the group consisting of a yellow fluorescent protein and a variant thereof.

13. The isolated polynucleotide of claim 1, wherein the FRET pair comprises a yellow fluorescent protein (YFP) and a red fluorescent pair (CFP).

\* \* \* \* \*