



US008183038B2

(12) **United States Patent**
Thomson et al.

(10) **Patent No.:** **US 8,183,038 B2**
(45) **Date of Patent:** **May 22, 2012**

(54) **COMPOSITION COMPRISING
RECOMBINANT NUCLEIC ACID ENCODING
SOX2, OCT-4, NANOG AND LIN28**

(75) Inventors: **James A. Thomson**, Madison, WI (US);
Junying Yu, Middleton, WI (US)

(73) Assignee: **Wisconsin Alumni Research
Foundation**, Madison, WI (US)

(*) Notice: Subject to any disclaimer, the term of this
patent is extended or adjusted under 35
U.S.C. 154(b) by 0 days.

(21) Appl. No.: **12/727,061**

(22) Filed: **Mar. 18, 2010**

(65) **Prior Publication Data**

US 2011/0028537 A1 Feb. 3, 2011

Related U.S. Application Data

(63) Continuation of application No. 12/053,440, filed on
Mar. 21, 2008.

(60) Provisional application No. 60/919,687, filed on Mar.
23, 2007, provisional application No. 60/974,980,
filed on Sep. 25, 2007, provisional application No.
60/989,058, filed on Nov. 19, 2007.

(51) **Int. Cl.**
C07H 21/04 (2006.01)

(52) **U.S. Cl.** **435/320.1; 536/23.5**

(58) **Field of Classification Search** None
See application file for complete search history.

(56) **References Cited**

OTHER PUBLICATIONS

Richards et al. The Transcriptome Profile of Human Embryonic Stem
Cells as Defined by SAGEstem Cells, 2004, vol. 22, pp. 51-54.*
Cowan et al. Nuclear Reprogramming of Somatic Cells After Fusion
with Human Embryonic Stem Cells Science, 2005, vol. 309, pp.
1369-1373.*

* cited by examiner

Primary Examiner — Deborah Crouch

(74) *Attorney, Agent, or Firm* — Quarles & Brady LLP

(57) **ABSTRACT**

The present invention relates to methods for reprogramming
a somatic cell to pluripotency by administering into the
somatic cell at least one or a plurality of potency-determining
factors. The invention also relates to pluripotent cell popula-
tions obtained using a reprogramming method.

16 Claims, 17 Drawing Sheets

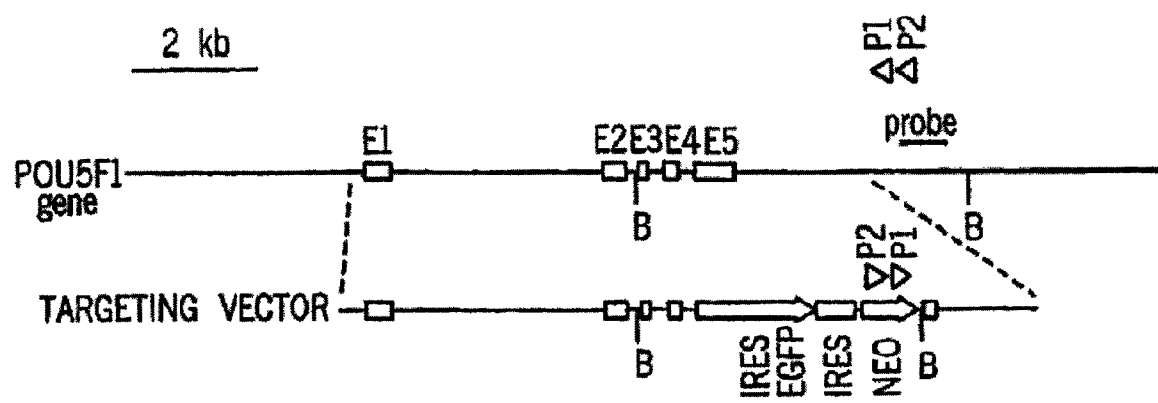


FIG. 1

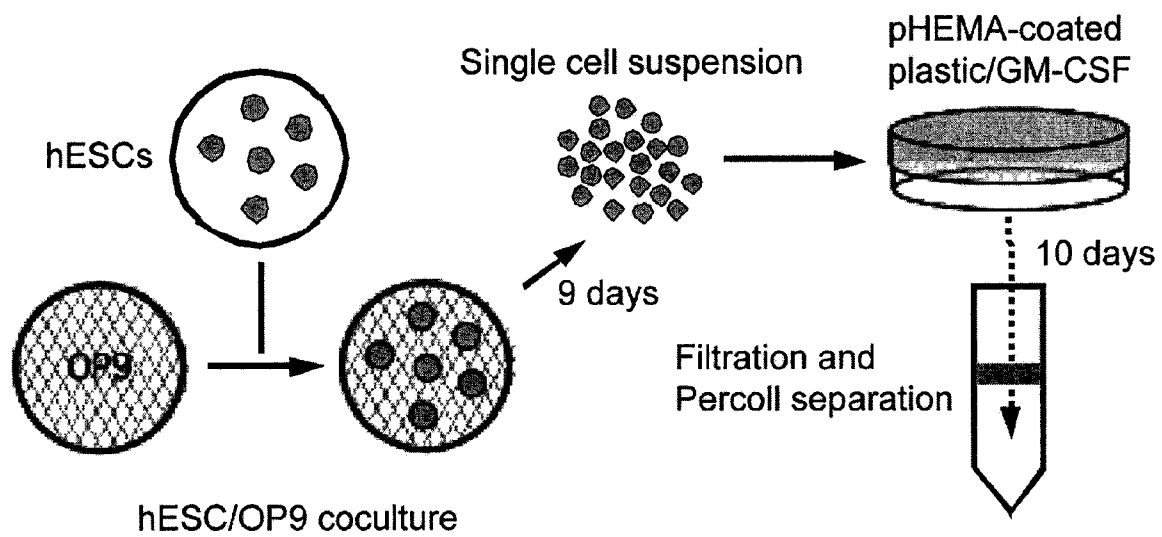


FIG. 2A

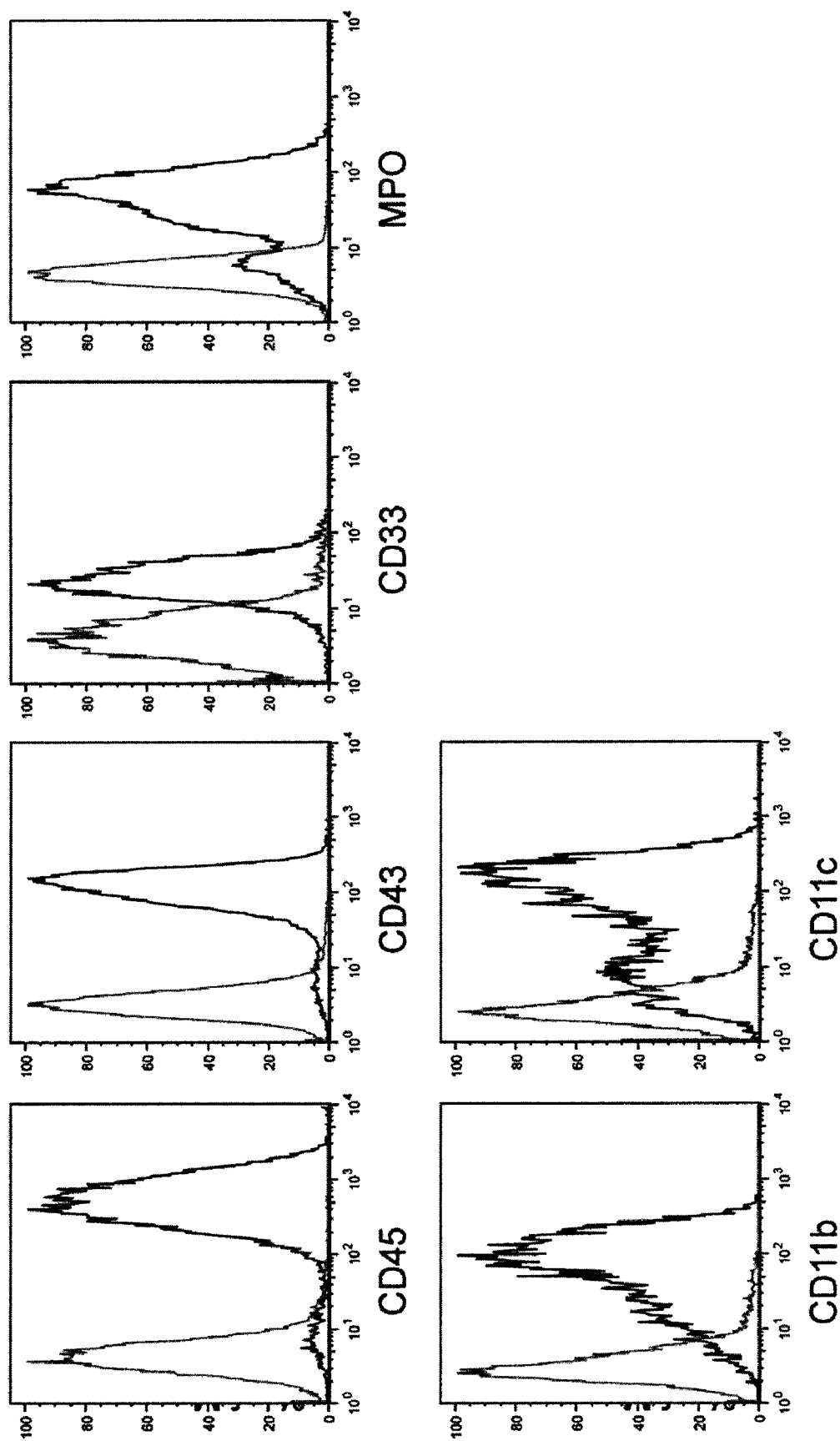


FIG. 2B



FIG. 3

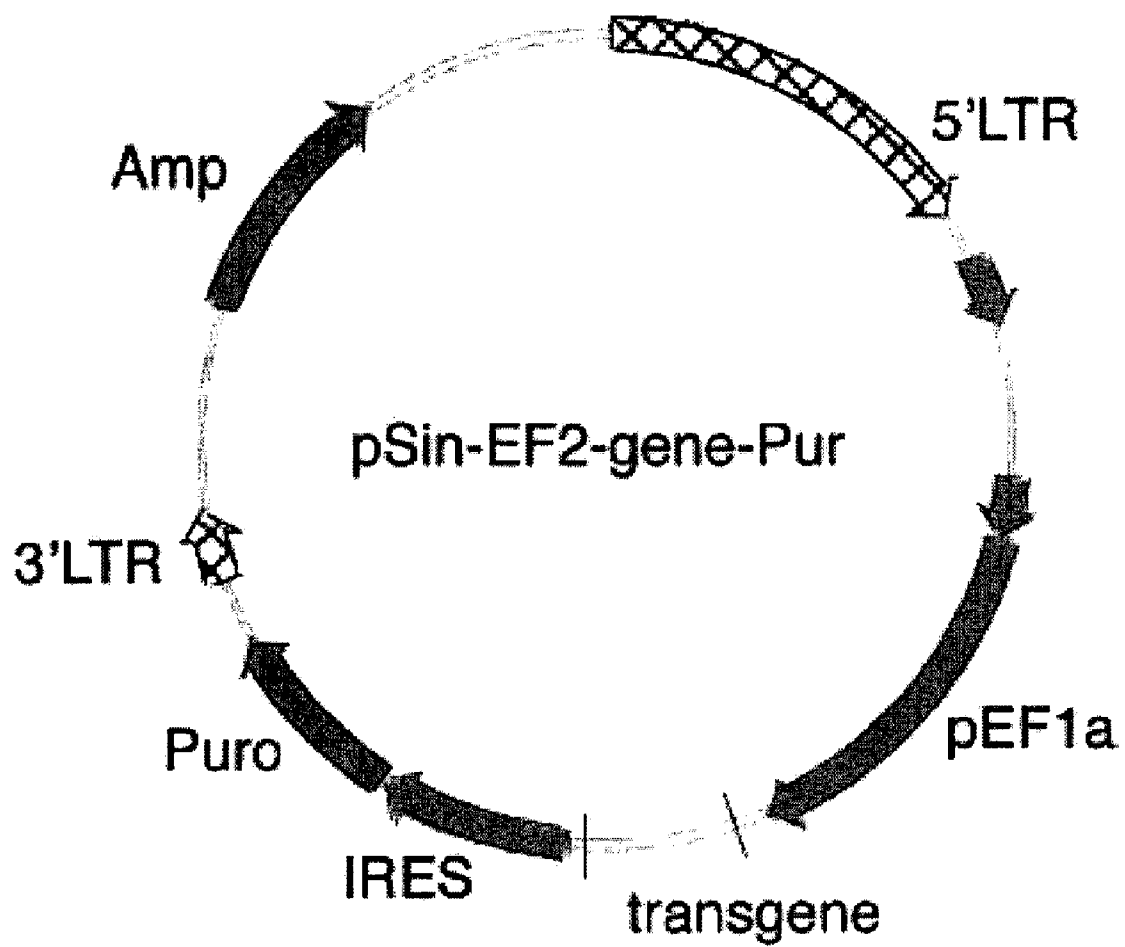


FIG. 4A

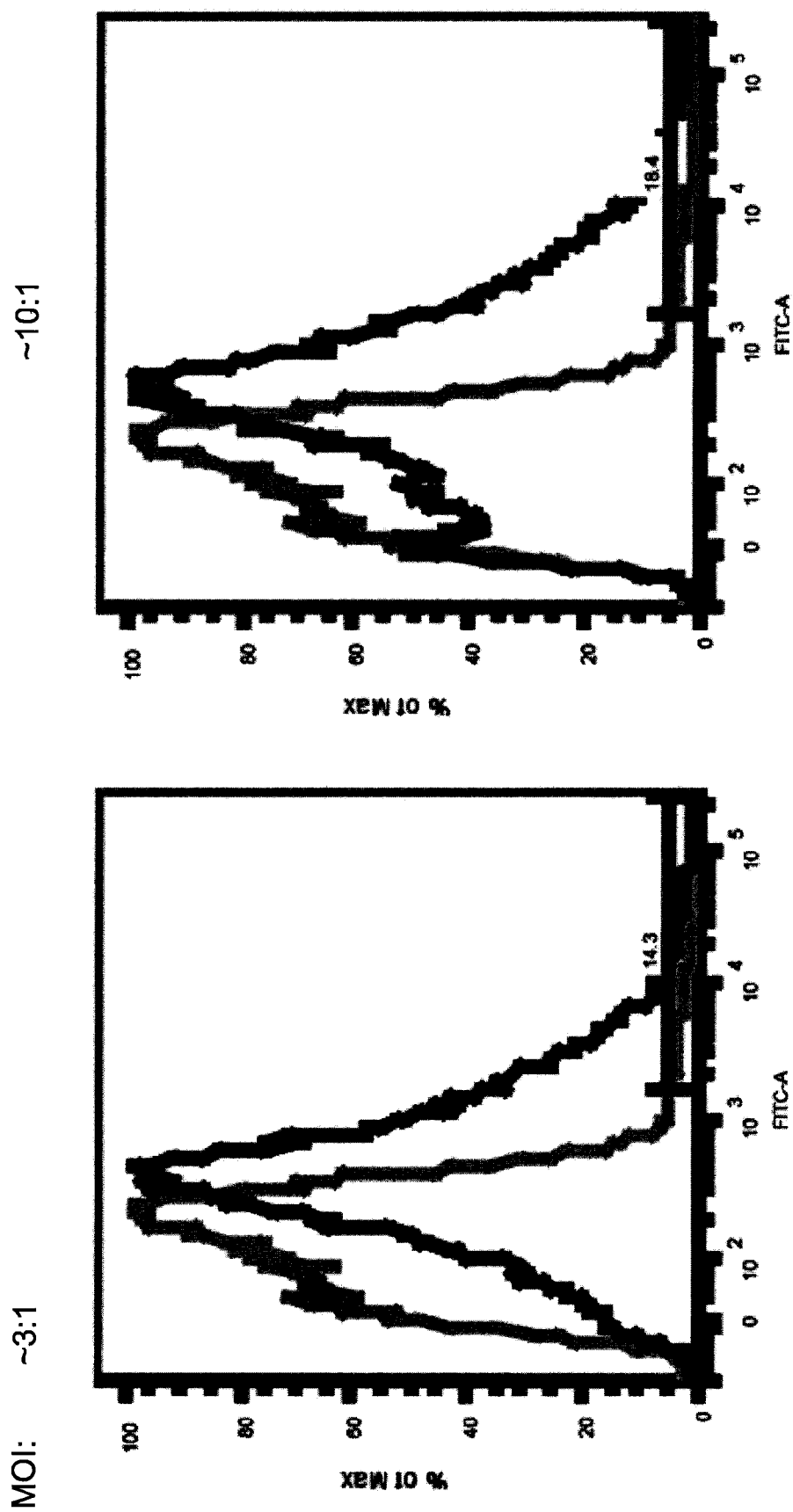
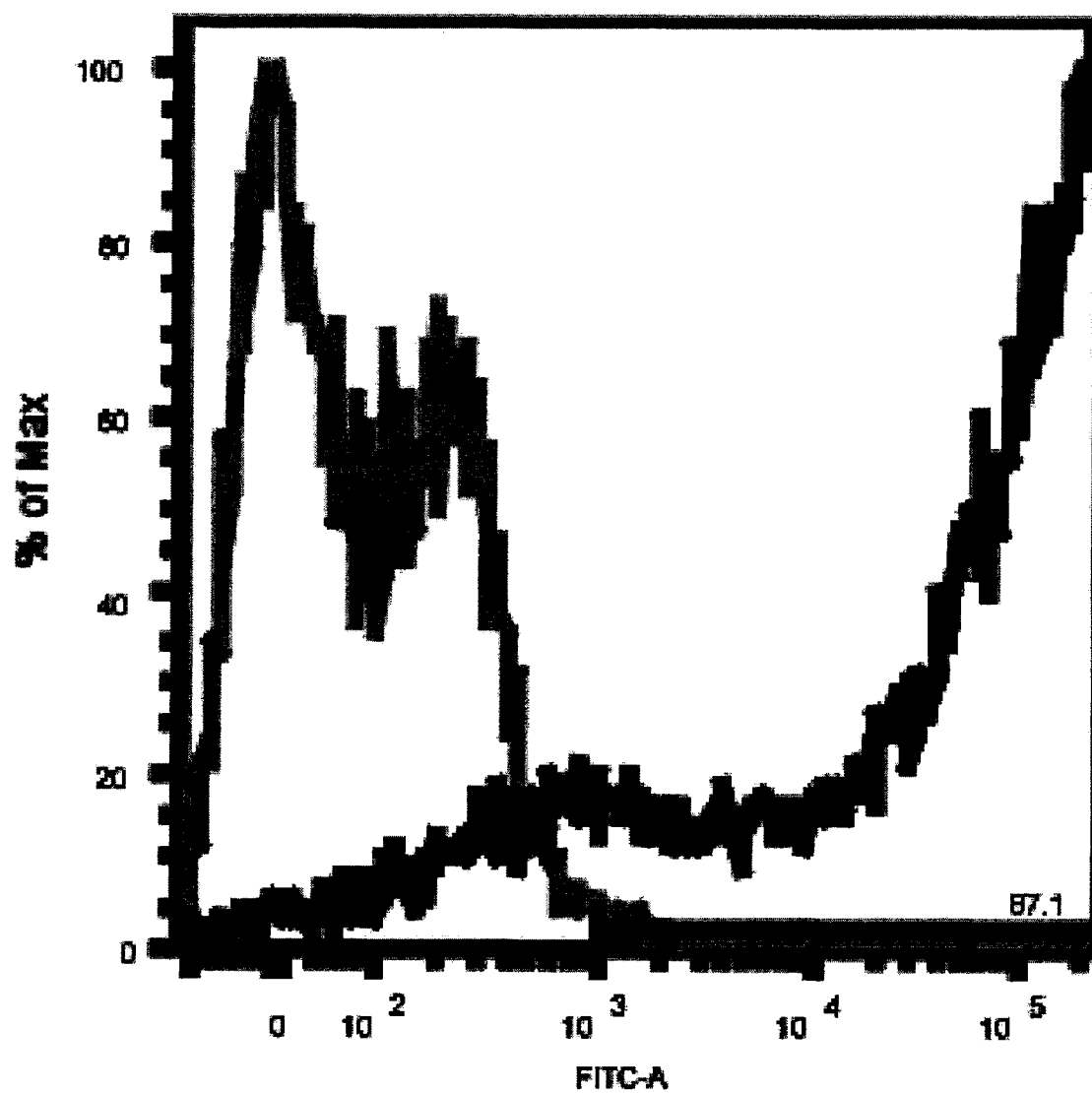


FIG. 4B

MOI: ~7.1



87.1%

FIG. 4C

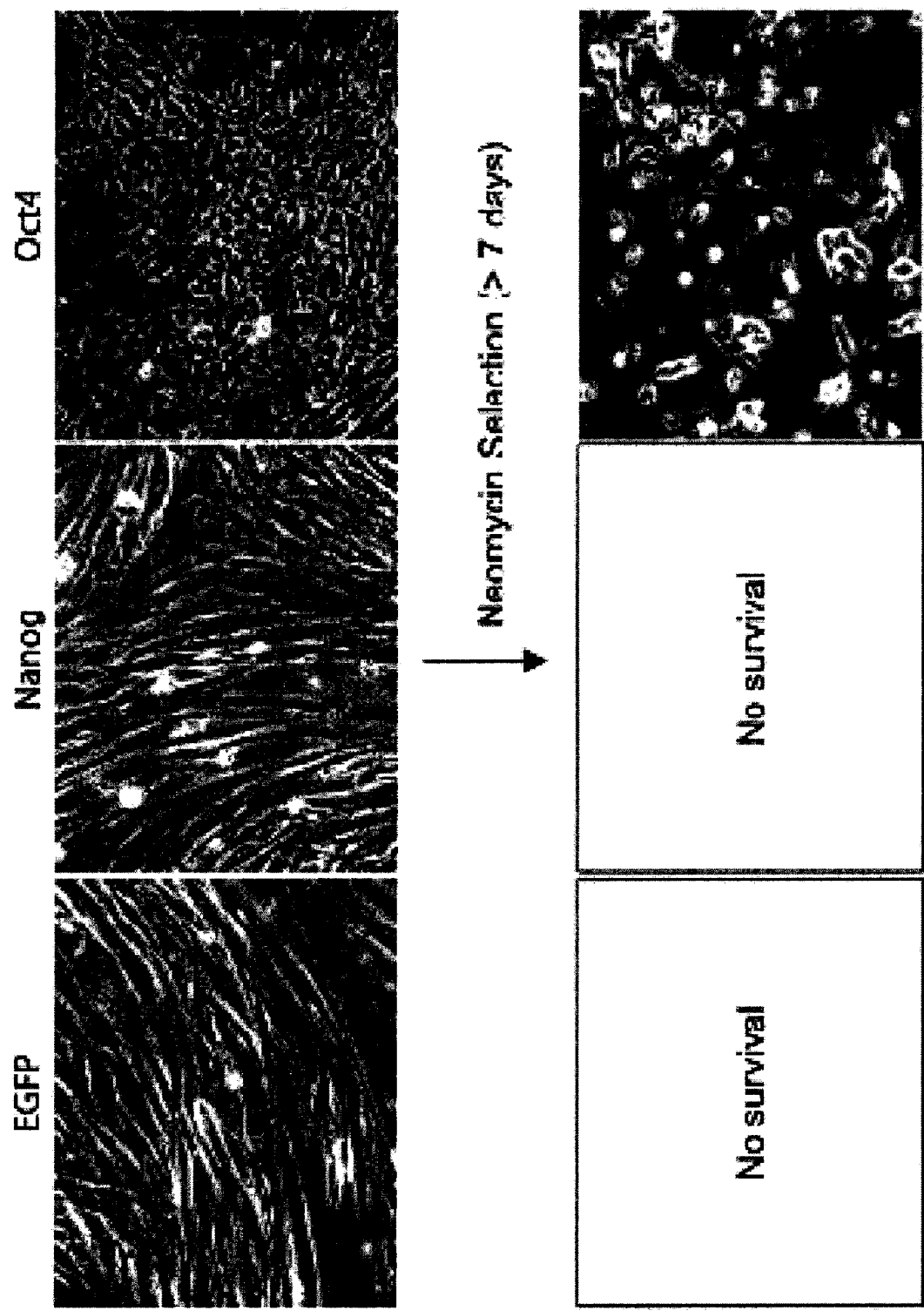


FIG. 5

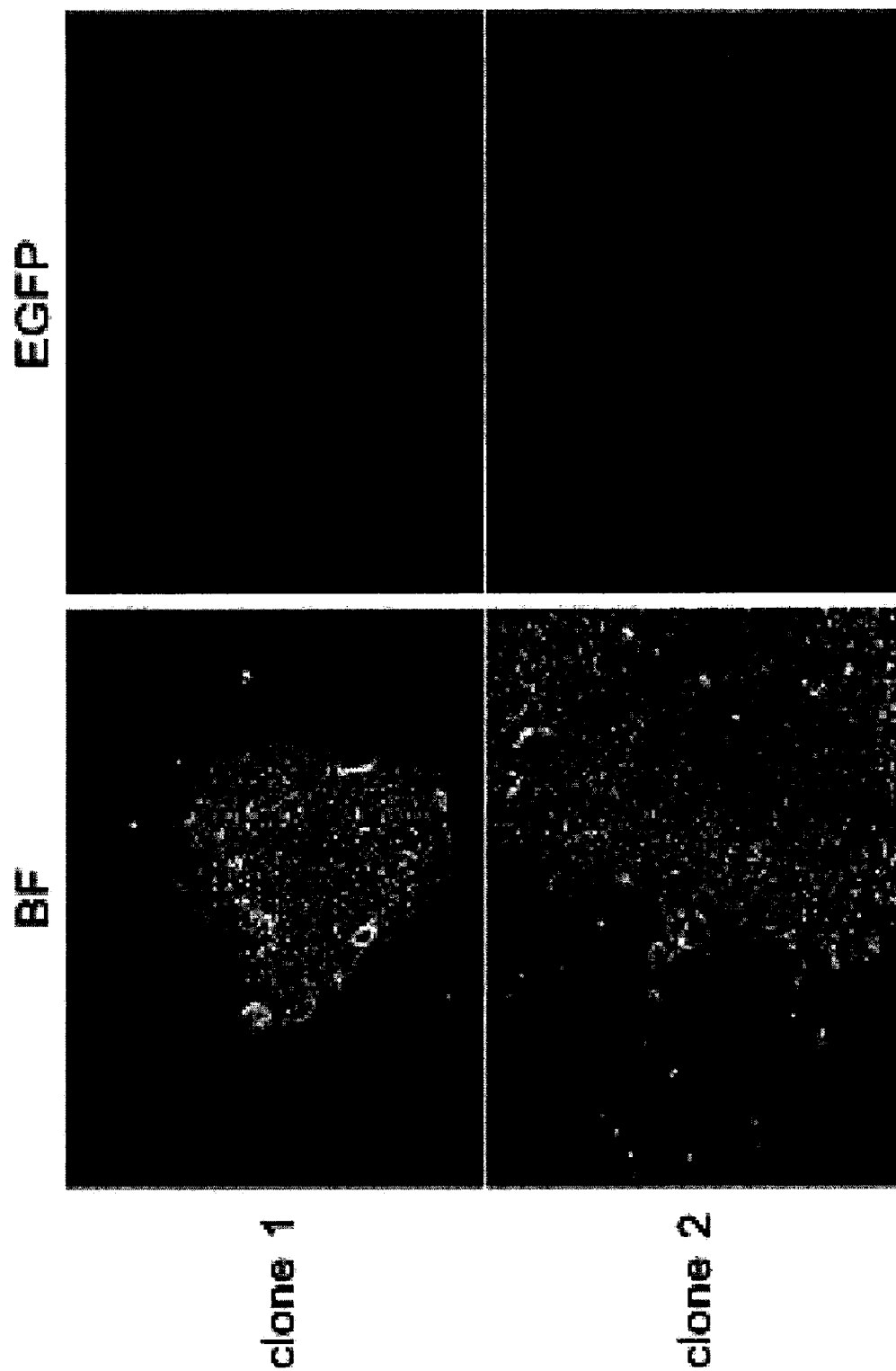


FIG. 6A

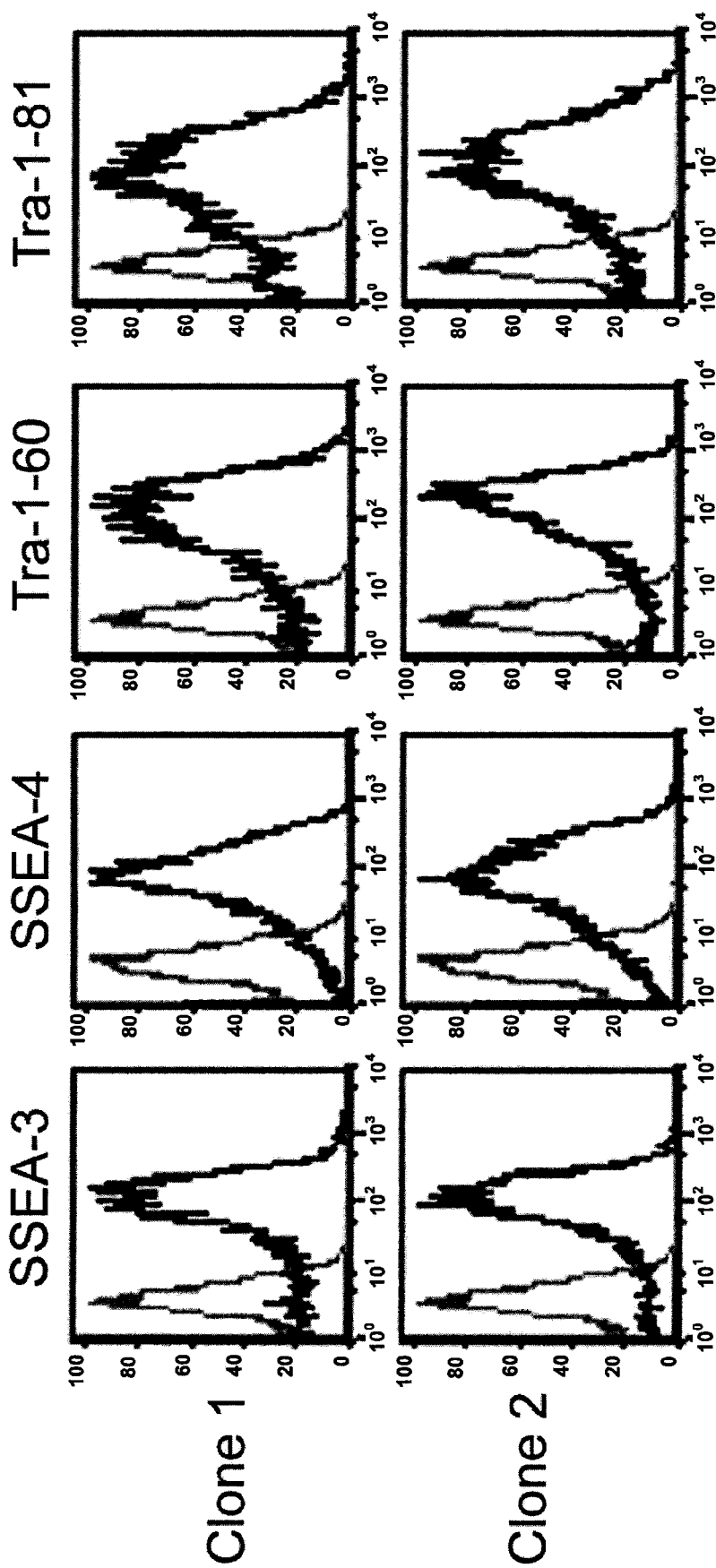


FIG. 6B

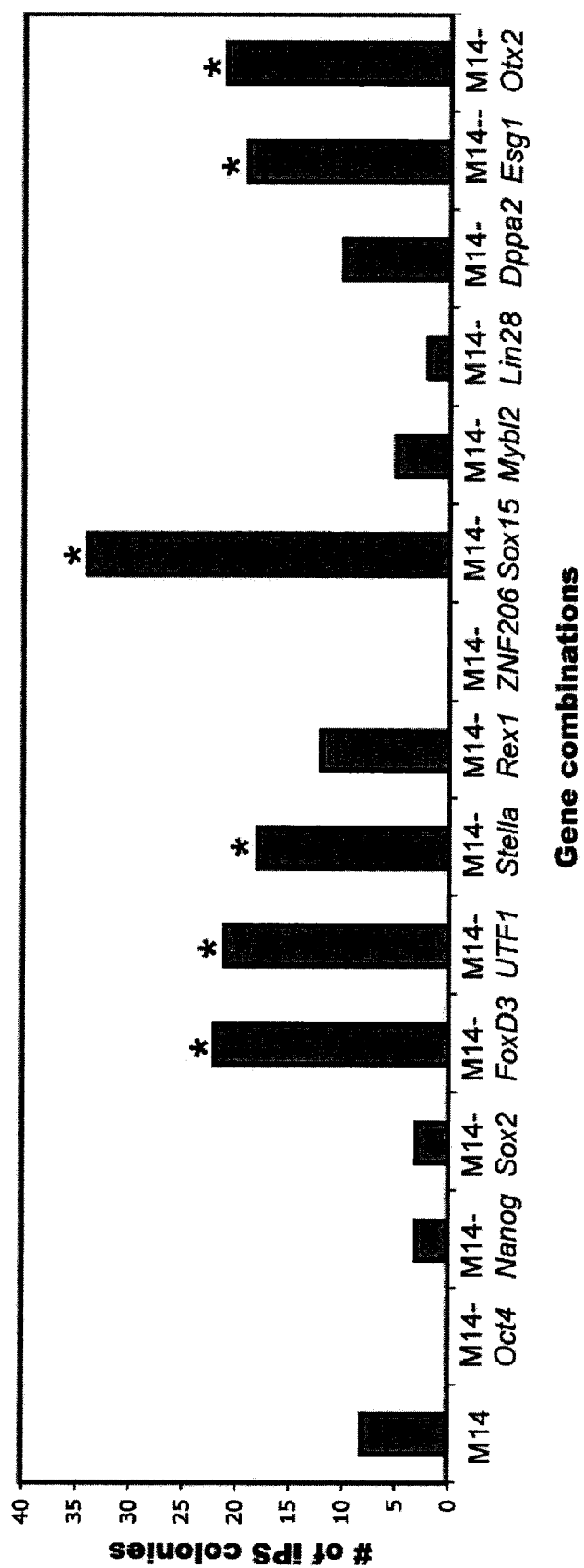


FIG. 7A

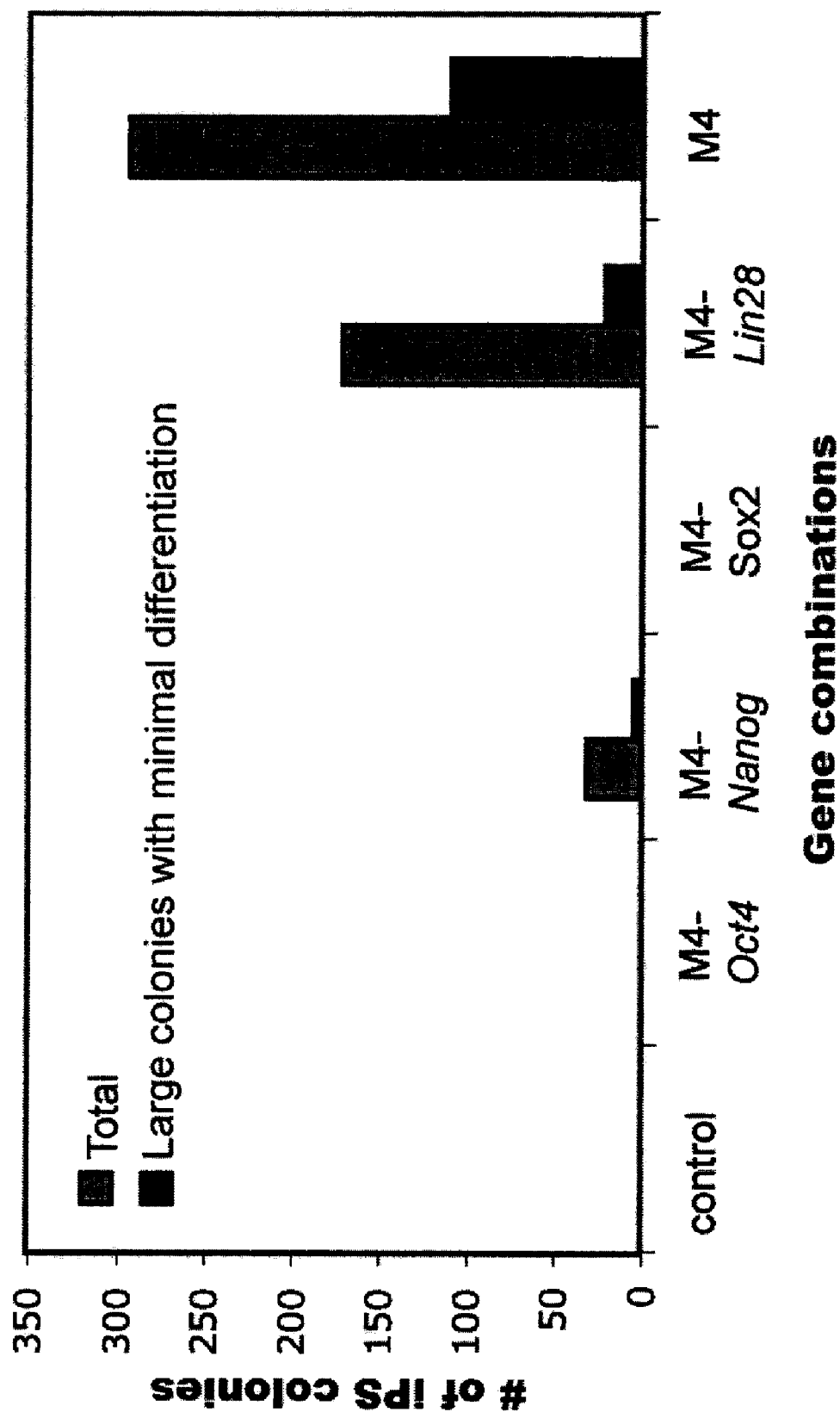


FIG. 7B

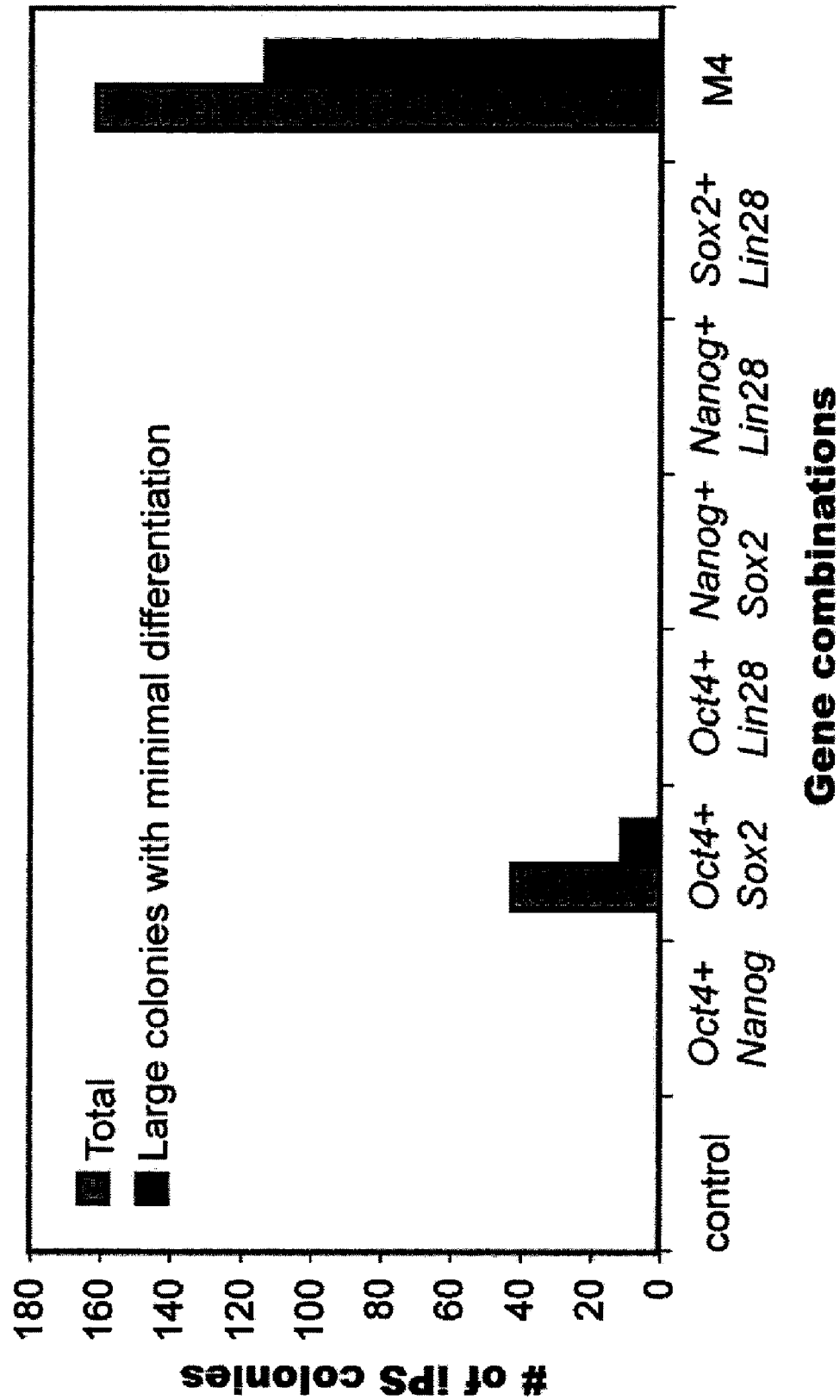


FIG. 7C

SK46

IPS(SK46)

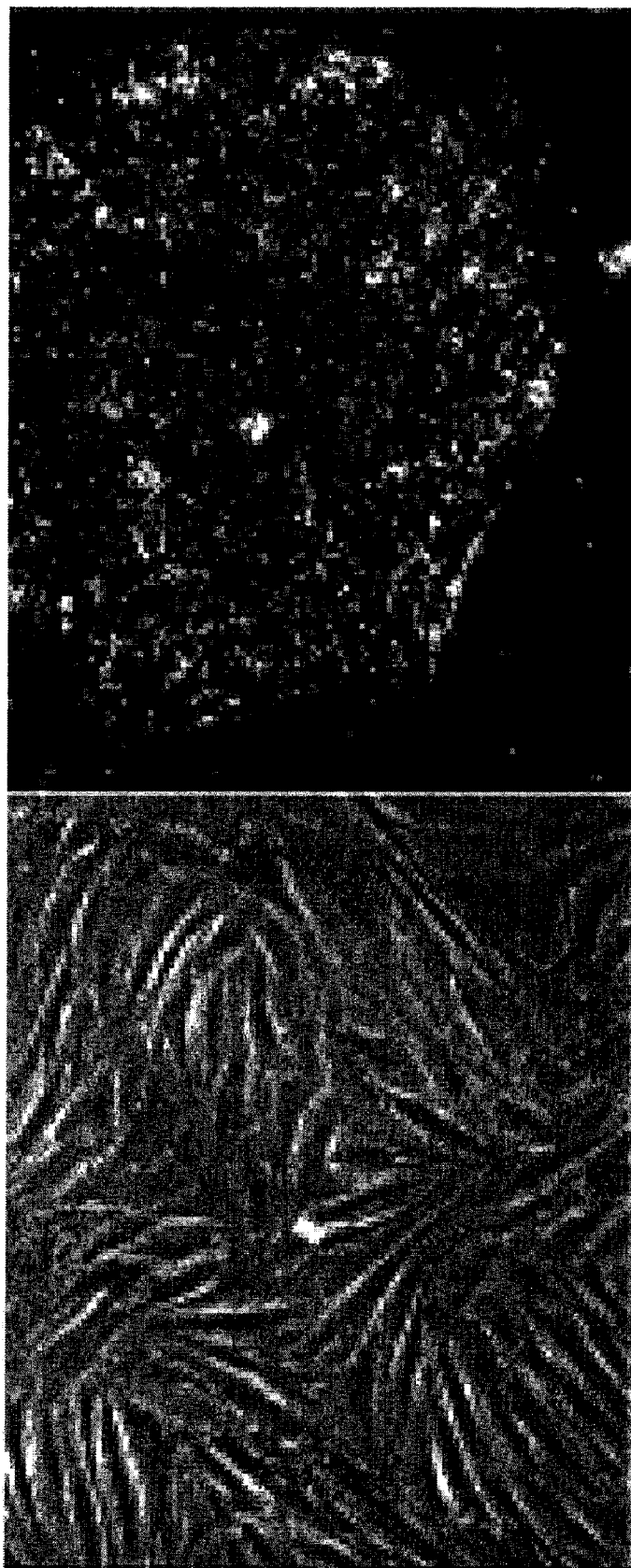
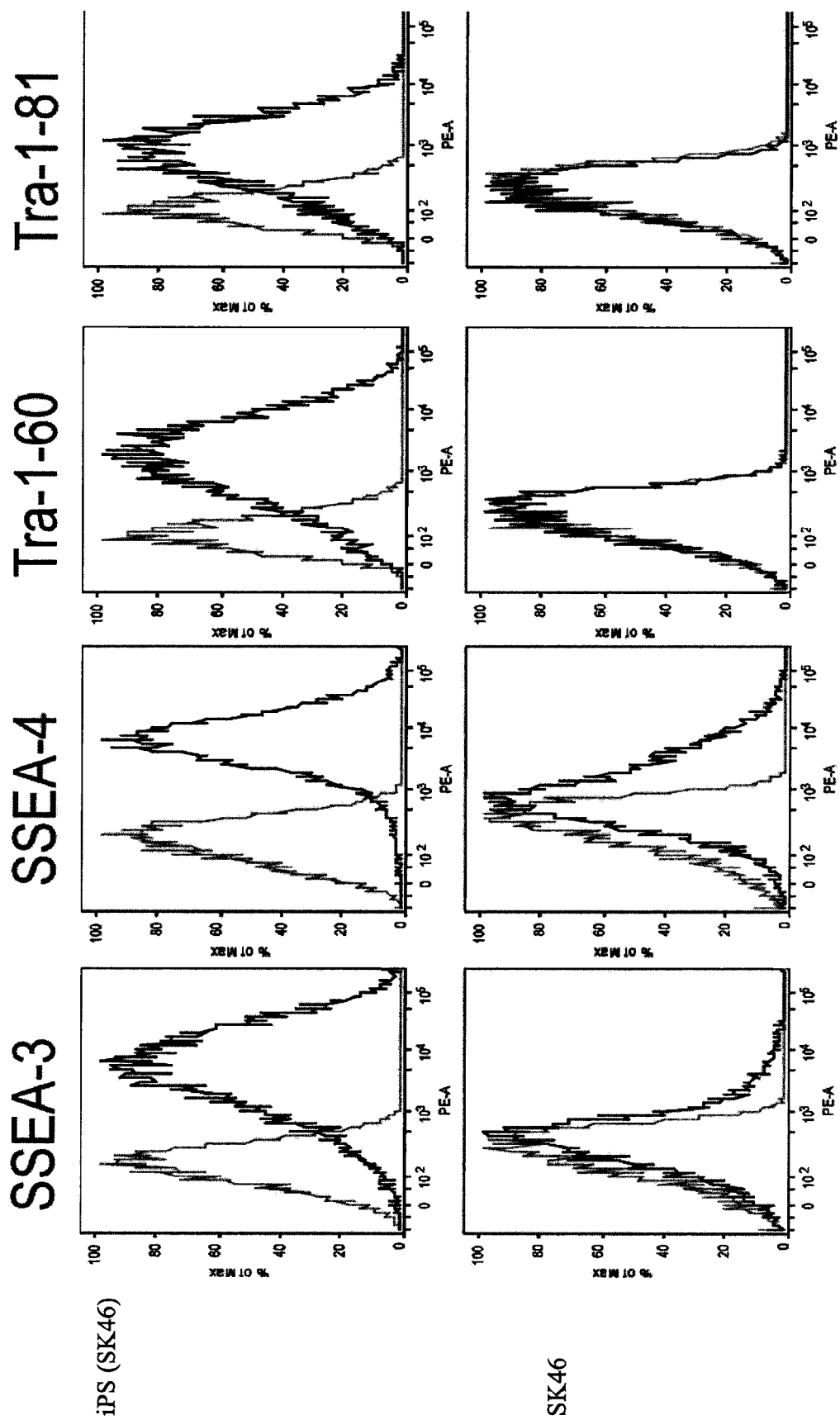


FIG. 8A



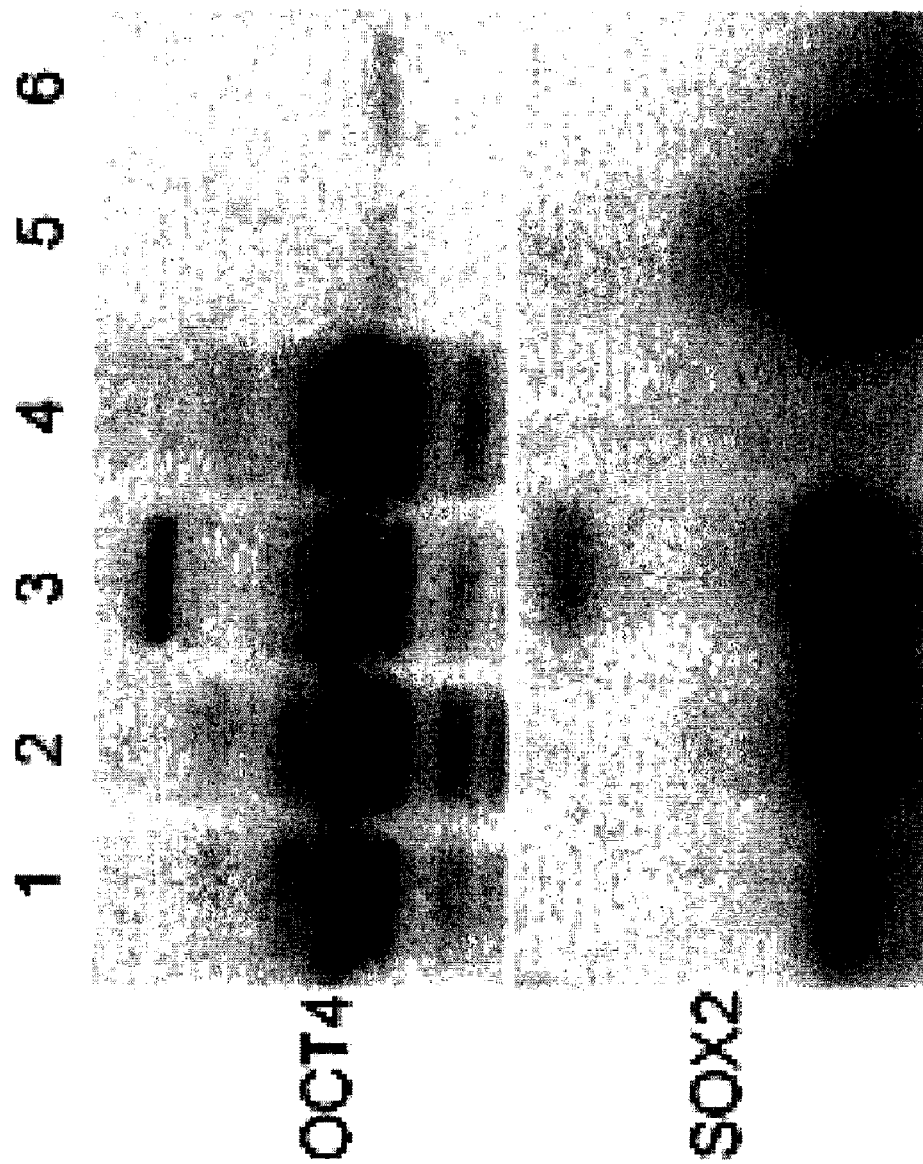


FIG. 9A

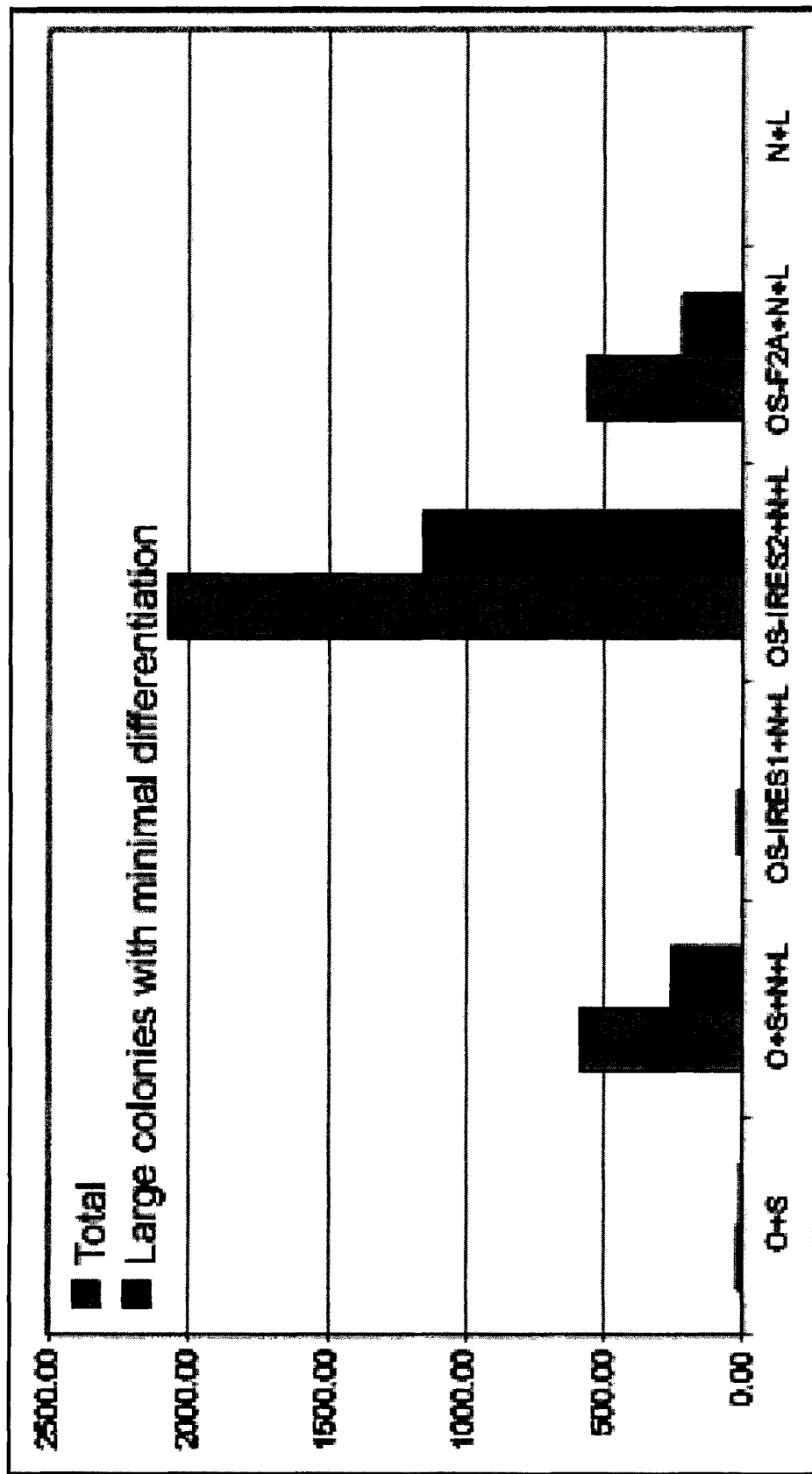


FIG. 9B

1

COMPOSITION COMPRISING RECOMBINANT NUCLEIC ACID ENCODING SOX2, OCT-4, NANOG AND LIN28

CROSS-REFERENCE TO RELATED APPLICATIONS

This application is a continuation of co-pending U.S. application Ser. No. 12/053,440, filed Mar. 21, 2008 which claims the benefit of U.S. Provisional Patent Application No. 60/919,687 filed Mar. 23, 2007; U.S. Provisional Patent Application No. 60/974,980, filed Sep. 25, 2007; and U.S. Provisional Patent Application No. 60/989,058, filed Nov. 19, 2007, each of which is incorporated herein by reference as if set forth in its entirety.

STATEMENT REGARDING FEDERALLY SPONSORED RESEARCH OR DEVELOPMENT

This invention was made with United States government support awarded by the following agencies: NIH R000167, GM069981. The United States government has certain rights in this invention.

BACKGROUND

Embryonic stem (ES) cells can grow indefinitely while maintaining pluripotency and can differentiate into cells of all three germ layers (Evans & Kaufman, *Nature* 292:154-156 (1981)). Human ES cells will be useful in treating a host of diseases, such as Parkinson's disease, spinal cord injury and diabetes (Thomson et al., *Science* 282:1145-1147 (1998)). Scientists have sought technical solutions to avoid the current method of generating ES cells from blastocyst cells and to avoid anticipated tissue rejection problems following transplantation into patients. One desirable way to accomplish these solutions would be to generate pluripotent cells directly from somatic cells of a post-natal individual.

Somatic cells can be reprogrammed by transferring their nuclear contents into oocytes (Wilmut et al., *Nature* 385:810-813 (1997)) or by fusion with ES cells (Cowan et al., *Science* 309:1369-1373 (2005)), indicating that unfertilized eggs and ES cells contain factors that confer totipotency or pluripotency in somatic cells.

Likewise, Yu et al. showed that cells derived by in vitro differentiation from an H1 Oct4 knock-in ES cells did not express EGFP, but that EGFP expression was restored upon cell-cell fusion with human ES cells. Yu et al., *Stem Cells* 24:168-176 (2006), incorporated herein by reference as if set forth in its entirety). Therefore, Yu et al. demonstrated that differentiated cells can become pluripotent via cell-cell fusion with human ES cells. Regardless of the differentiated cell type, upon fusion with undifferentiated human ES cells, ES cell specific antigens and marker genes were expressed and differentiation-specific antigens were no longer detectable in the fused hybrid cells. Advantageously, EGFP expression was re-established in the hybrid cells, providing a convenient marker for re-establishment of pluripotent stem cell status. When the hybrid cells formed embryoid bodies (EBs), genes characteristic of all three germ layers and extra-embryonic tissues were up-regulated, indicating that the hybrid cells had a potential to differentiate into multiple lineages.

Although the transcriptional determination of pluripotency is not fully understood, several transcription factors, including Oct 3/4 (Nichols et al., *Cell* 95:379-391 (1998)), Sox2 (Avilion et al., *Genes Dev.* 17:126-140 (2003)) and Nanog (Chambers et al., *Cell* 113:643-655 (2003)) are involved in

2

maintaining ES cell pluripotency; however, none is sufficient alone to specify ES cell identity.

Chambers & Smith (EP 1 698 639 A2, (2002)) maintained pluripotent murine cells without a feeder layer or feeder cell extract and without a gp130 cytokine by introducing vectors that encode or activate differentiation-suppressing factors, but did not convert differentiated cells into a pluripotent state.

More recently, Takahashi & Yamanaka introduced four factors (i.e., Oct3/4, Sox2, c-Myc and Klf4) into mouse ES cells and mouse adult fibroblasts cultured under conditions suitable for mouse ES cell culture to obtain induced pluripotent stem (iPS) cells that exhibited mouse ES cell morphology and growth properties and expressed mouse ES cell marker genes (Takahashi & Yamanaka, *Cell* 126:663-676 (2006)). Notably, exogenous Oct-4 introduced into the mouse fibroblasts resulted in only marginal Oct-4 expression. Subcutaneous transplantation of iPS cells into nude mice resulted in tumors containing a variety of tissues from all three germ layers. Following injection into blastocysts, iPS cells contributed to mouse embryonic development. However, c-Myc, which was necessary for pluripotent induction, is an oncogene. Likewise, Klf4 is an oncogene. These data demonstrate that pluripotent cells can be directly generated from mouse fibroblast cultures by adding only a few defined factors using a retroviral transduction. However, as described infra, the set of factors used to produce iPS cells from differentiated mouse cells was insufficient to reprogram human somatic cells to pluripotency using lentiviral vectors without introducing additional changes to the cells.

One could hypothesize that factors that can reprogram human somatic cells differ from those factors that can reprogram somatic cells from model organisms (including mice) because ES cells from mice and humans require distinct sets of factors to remain undifferentiated, illustrating the significance of species-specific differences, even among mammals. For example, the leukemia inhibitory factor (LIF)/Stat3 pathway, a key to mouse ES cell proliferation, does not support human ES cell proliferation and appears inactive in conditions that support human ES cells (Daheron L, et al., *Stem Cells* 22:770-778 (2004); Humphrey R, et al., *Stem Cells* 22:522-530 (2004); and Matsuda T, et al., *EMBO J.* 18:4261-4269 (1999)).

Similarly, while bone morphogenetic proteins (BMPs) together with LIF support mouse ES cell self-renewal at clonal densities in serum-free medium (Ying Q, et al. *Cell* 115:281-292 (2003)), they cause rapid human ES cell differentiation in conditions that would otherwise support self-renewal, such as culture on fibroblasts or in fibroblast-conditioned medium (Xu R, et al. *Nat. Biotechnol.* 20:1261-1264 (2002)). Indeed, inhibition of BMP signaling in human ES cells is beneficial (Xu R, et al., *Nat. Methods* 2:185-190 (2005)).

Still further, fibroblast growth factor (FGF) signaling is important to self-renewal of human ES cells, but apparently not for mice (Xu et al. (2005), supra; and Xu C, et al., *Stem Cells* 23:315-323 (2005)).

Accordingly, the art still seeks a set of potency-determining factors suited at least for use in methods for reprogramming primate (including human and non-human) somatic cells to yield pluripotent cells. Such cells, obtained without relying upon embryonic tissues, would be suited for use in applications already contemplated for existing, pluripotent, primate ES cells.

BRIEF SUMMARY

The present invention is broadly summarized as relating to methods for reprogramming differentiated, somatic, primate

cells into pluripotent cells, and more specifically into iPS cells. As used herein, "iPS cells" refer to cells that are substantially genetically identical to their respective differentiated somatic cell of origin and display characteristics similar to higher potency cells, such as ES cells, as described herein. The cells can be obtained from various differentiated (i.e., non-pluripotent and multipotent) somatic cells.

iPS cells exhibit morphological (i.e., round shape, large nucleoli and scant cytoplasm) and growth properties (i.e., doubling time; ES cells have a doubling time of about seven- to eighteen hours) akin to ES cells. In addition, iPS cells express pluripotent cell-specific markers (e.g., Oct-4, SSEA-3, SSEA-4, Tra-1-60, Tra-1-81, but not SSEA-1). iPS cells, however, are not immediately derived from embryos and can transiently or stably express one or more copies of selected potency-determining factors at least until they become pluripotent. As used herein, "not immediately derived from embryos" means that the starting cell type for producing iPS cells is a non-pluripotent cell, such as a multipotent cell or terminally differentiated cell, such as somatic cells obtained from a post-natal individual.

In the methods described herein, at least two potency-determining factors can be introduced into, and expressed in, differentiated somatic cells, whereupon the somatic cells convert in culture to cells having properties characteristic of pluripotent cells, such as human ES cells (i.e., express at least Oct-4, SSEA-3, SSEA-4, TRA-1-60 or TRA-1-81, but not SSEA-1, and appear as compact colonies having a high nucleus to cytoplasm ratio and prominent nucleolus), that can differentiate into cells characteristic of all three germ layers, and that contain the genetic complement of the somatic cells of a post-natal individual. Apart from genetic material introduced to encode the potency-determining factors, the reprogrammed (i.e., converted) cells are substantially genetically identical to the somatic cells from which they were derived.

As used herein, a "potency-determining factor" refers to a factor, such as a gene or other nucleic acid, or a functional fragment thereof, as well as an encoded factor or functional fragment thereof, used to increase the potency of a somatic cell, so that it becomes pluripotent. The potency-determining factors optionally can be present only transiently in the reprogrammed cells or can be maintained in a transcriptionally active or inactive state in the genome of the reprogrammed cells. Likewise, the potency-determining factors can be present in more than one copy in the reprogrammed cells, where the potency-determining factor can be integrated in the cell's genome, can be extra-chromosomal or both. The potency-determining factors can include, but are not limited to, Stella (SEQ ID NO:1); POU5F1 (Oct-4; SEQ ID NO:2); Sox2 (SEQ ID NO:3); FoxD3, UTF1, Rex1, ZNF206, Sox15, Mybl2, Lin28 (SEQ ID NO:4), Nanog (SEQ ID NO:5), DPPA2, ESG1, Otx2 and subsets thereof. In some embodiments, as few as two potency-determining factors, e.g., Oct-4 and Sox2, can be sufficient. Efficiency in obtaining reprogrammed cells, however, can be improved by including additional potency-determining factor, such as Lin28, Nanog or both.

In a first aspect, the invention relates to a replenishable, enriched population of pluripotent cells obtained from a post-natal individual, especially from a living individual, but optionally from a deceased individual. Cells in the enriched cell population express at least one cell-type-specific marker, including, but not limited to, Oct-4, SSEA3, SSEA4, Tra-1-60, Tra-1-81 or combinations thereof and have other hallmarks of pluripotent cells, such as ES cells. In addition, the pluripotent cells may express alkaline phosphatase (ALP). Furthermore, the pluripotent cells may have a genome sub-

stantially genetically identical to that of a pre-existing, differentiated cell from the individual. Likewise, the pluripotent cells may have a genome that encodes at least one of the potency-determining factors, which may be transcriptionally active or inactive after reprogramming. Additionally, the potency-determining factors may be in a form of a reprogramming sequence in which a polynucleotide encoding the potency-determining factor is operably linked to a heterologous promoter. As used herein, "heterologous promoter" means a promoter that is operably linked to a polynucleotide for which the promoter does not normally initiate transcription.

In a second aspect, the invention relates to methods and compositions for identifying potency-determining factors required to reprogram somatic cells into pluripotent cells.

Unless otherwise defined, all technical and scientific terms used herein have the same meaning as commonly understood by one of ordinary skill in the art to which this invention belongs. Although suitable methods and materials for the practice or testing of the present invention are described below, other methods and materials similar or equivalent to those described herein, which are well known in the art, can also be used.

Other objects, advantages and features of the present invention will become apparent from the following specification taken in conjunction with the accompanying drawings.

BRIEF DESCRIPTION OF THE SEVERAL VIEWS OF THE DRAWINGS

FIG. 1 illustrates a site downstream from a human Oct4 promoter into which a knock-in construct was introduced. In cells containing the knock-in construct, enhanced green fluorescent protein (EGFP) and neomycin phosphotransferase (NEO) are expressed when the Oct4 promoter is active. These cells can be used to evaluate which factors can reprogram somatic cells into pluripotent cells.

FIGS. 2A-B illustrate human H1 ES cell differentiation. FIG. 2A shows schematics of myeloid precursor derivation and purification from human ES cells. FIG. 2B shows phenotypic analysis of differentiated cells obtained after Percoll® separation. Gray line: isotype control; black line: antibody staining. Abbreviations: hESC, human embryonic stem cell; MPO, myeloperoxidase; pHEMA, poly(2-hydroxyethyl methacrylate).

FIG. 3 illustrates the Oct-4 region containing the knock-in construct of FIG. 1.

FIGS. 4A-C illustrate lentiviral transduction of somatic cells. FIG. 4A shows a schematic diagram of lentiviral construct. FIG. 4B shows Percoll®-purified cells were transduced with EGFP-expressing lentiviral vectors at various MOI. EGFP expression was analyzed by flow cytometry three days after transduction without drug selection. FIG. 4C shows lentiviral transduction of Percoll®-purified cells after several additional days of culture on Matrigel®. EGFP expression was analyzed two days after lentiviral transduction.

FIG. 5 illustrates transgene overexpression in cells differentiated for seven days on Matrigel®. No significant change in morphology was observed in cells overexpressing Nanog or EGFP (control). Morphology of Oct-4-expressing cells changes dramatically, and many of these cells survived neomycin selection, but none of these cells showed typical human ES cell morphology, indicating that a drug-selectable population of Oct-4-expressing ES cells does not persist through the culture period necessary for myeloid differentiation.

5

FIGS. 6A-B illustrate reprogramming of Oct4KICD45+A cells through introduction of fourteen potency-determining factors. FIG. 6A shows the established clones display undifferentiated human ES cell morphology and express EGFP under direction of the endogenous Oct4 promoter. FIG. 6B

shows flow cytometry analysis of human ES cell-specific cell surface antigen expression in established clones. Gray line: isotype control; black line: antibody staining.

FIGS. 7A-C illustrate reprogramming efficiency, as evidenced by colony formation, after introduction of various sets of potency-determining factors. FIG. 7A shows the identified set of fourteen potency-determining factors was introduced into cells in combinations, wherein each combination excluded one of the fourteen factors. By evaluating the ability of the potency-determining factors to reprogram the tested cells to an ES-like state, the inventors determined whether the excluded potency-determining factor was essential to the reprogramming. For example, a set of potency-determining factors termed M1 that lacked Oct-4 (depicted as M1-Oct-4) was unable to form a significant number of ES-like colonies. As such, it was concluded that Oct-4 was important for somatic cell reprogramming. FIG. 7B shows a set of potency-determining factors (narrowed from FIG. 7A) evaluated for further testing was narrowed from fourteen to four (M4, being Oct-4, Sox2, Lin28 and Nanog). These four potency-determining factors were tested by serially excluding one of the four from the combination. Where a combination of three potency-determining factors (e.g., M4-Oct-4) was unable to reprogram the tested cells to form a significant number of stable ES-like colonies, the inventors concluded that the omitted gene is important for somatic cell reprogramming. In FIG. 7B, the light gray bars indicate the total number of reprogrammed colonies formed having typical human ES cell morphology; dark gray bars indicate the number of large colonies with minimal differentiation. FIG. 7C shows a set of potency-determining factors (narrowed from FIG. 7B) evaluated for further testing was narrowed from four to two (i.e., Oct-4 and Sox2). Oct-4, Sox2, Lin28 and Nanog were tested by serially excluding two of the four from the combination.

FIGS. 8A-B illustrate reprogramming in human adult skin fibroblasts. FIG. 8A shows bright-field images of human adult skin cell (p5) (left) and reprogrammed cells (right). FIG. 8B shows flow cytometry analysis of human ES cell-specific markers in human adult skin cells (p5) (bottom) and reprogrammed cells (top). Gray line: isotype control; black line: antibody staining.

FIGS. 9A-B illustrate the effect on reprogramming of relative expression of Oct-4 and Sox2. FIG. 9A shows Western blot analysis of Oct-4 and Sox2 in 293FT cells; lane 1, pSin4-EF2-Oct4-IRES1-Sox2 (O-IRES1); lane 2, pSin4-EF2-Oct4-IRES2-Sox2 (OS-IRES2); lane 3, pSin4-EF2-Oct4-F2A-Sox2 (OS-F2A); lane 4, pSin4-EF2-Oct4-IRES1-puro (O); lane 5, pSin4-EF2-Sox2-IRES1-puro (S); lane 6, no plasmid (control). FIG. 9B shows reprogramming in mesenchymal cells derived from OCT4 knock-in human ES cells using linked potency-determining factors; gene combinations are the same as in FIG. 9A, with the addition of pSin4-EF2-Nanog-IRES1-puro (N) and pSin4-EF2-Lin28-IRES1-puro (L).

DETAILED DESCRIPTION OF PREFERRED EMBODIMENTS

The inventors hypothesized that potency-determining factors present in primate ES cells play an important role in maintaining pluripotency and that differentiated somatic cells

6

could be reprogrammed to a state of pluripotency through expression of potency-determining factors.

Cell types pass through various levels of potency during differentiation, such as, totipotency, pluripotency and multipotency. Of particular interest herein are pluripotent cells. As used herein, "pluripotent cells" refer to a population of cells that can differentiate into all three germ layers (e.g., endoderm, mesoderm and ectoderm). Pluripotent cells express a variety of pluripotent cell-specific markers, have a cell morphology characteristic of undifferentiated cells (i.e., compact colony, high nucleus to cytoplasm ratio and prominent nucleolus) and form teratomas when introduced into an immunocompromised animal, such as a SCID mouse. The teratomas typically contain cells or tissues characteristic of all three germ layers. One of ordinary skill in the art can assess these characteristics by using techniques commonly used in the art. See, e.g., Thomson et al., *supra*. Pluripotent cells are capable of both proliferation in cell culture and differentiation towards a variety of lineage-restricted cell populations that exhibit multipotent properties. Multipotent somatic cells are more differentiated relative to pluripotent cells, but are not terminally differentiated. Pluripotent cells therefore have a higher potency than multipotent cells. As used herein, "reprogrammed pluripotent primate stem cells" (and similar references) refer to the pluripotent products of somatic cell reprogramming methods. Such cells are suitable for use in research and therapeutic applications currently envisioned for human ES cells.

The present invention broadly relates to novel methods for reprogramming differentiated somatic cells into higher-potency cells, such as pluripotent cells, by administering at least two potency-determining factors into somatic cells to achieve a higher level of potency in the reprogrammed cells than in the somatic cells. Advantageously, the present invention allows the generation of pluripotent cells, such as iPS cells, from somatic cells without requiring an addition of cell surface receptors for introducing the potency-determining factors to the somatic cells. As used herein, "reprogramming" refers to a genetic process whereby differentiated somatic cells are converted into de-differentiated, pluripotent cells, and thus have a greater pluripotency potential than the cells from which they were derived. That is, the reprogrammed cells express at least one of the following pluripotent cell-specific markers: SSEA-3, SSEA-4, TRA-1-60 or TRA 1-81. Preferably, the reprogrammed cells express all these markers.

Potency-determining factors that can reprogram somatic cells include, but are not limited to, factors such as Oct-4, Sox2, FoxD3, UTF1, Stella, Rex1, ZNF206, Sox15, Mybl2, Lin28, Nanog, DPPA2, ESG1, Otx2 or combinations thereof. In the examples, a set with as few as two of the fourteen factors was sufficient to reprogram the tested cells; this set included Oct-4 and Sox2. Addition of other potency-determining factors to Oct-4 and Sox2, however, increased the efficiency with which reprogrammed cells were obtained. c-Myc and Klf4, however, are not essential as potency-determining factors. Preferably, the potency-determining factor may be a transcription factor.

Suitable somatic cells can be any somatic cell, although higher reprogramming frequencies are observed when the starting somatic cells have a doubling time about twenty-four hours. Somatic cells useful in the invention are non-embryonic cells obtained from a fetal, newborn, juvenile or adult primate, including a human. Examples of somatic cells that can be used with the methods described herein include, but are not limited to, bone marrow cells, epithelial cells, fibroblast cells, hematopoietic cells, hepatic cells, intestinal cells, mesenchymal cells, myeloid precursor cells and spleen cells.

Another type of somatic cell is a CD29⁺ CD44⁺ CD166⁺ CD105⁺ CD73⁺ and CD31⁻ mesenchymal cell that attaches to a substrate. Alternatively, the somatic cells can be cells that can themselves proliferate and differentiate into other types of cells, including blood stem cells, muscle/bone stem cells, brain stem cells and liver stem cells. Multipotent hematopoietic cells, suitably myeloid precursor or mesenchymal cells, are specifically contemplated as suited for use in the methods of the invention.

Likewise, suitable somatic cells are receptive, or can be made receptive using methods generally known in the scientific literature, to uptake of potency-determining factors including genetic material encoding the factors. Uptake-enhancing methods can vary depending on the cell type and expression system. Exemplary conditions used to prepare receptive somatic cells having suitable transduction efficiency are known in the art and are described in the examples below. One method for making cells receptive to potency-determining factors is described below in connection with the electroporation methods.

A potency-determining factor may be introduced as a reprogramming sequence in which a polynucleotide sequence encoding the potency-determining factor is operably linked to a heterologous promoter, which may become inactive after somatic cells are reprogrammed. The heterologous promoter is any promoter sequence that can drive expression of a polynucleotide sequence encoding the potency-determining factor in the somatic cell, such as, e.g., an Oct4 promoter.

The relative ratio of potency-determining factors may be adjusted to increase reprogramming efficiency. For example, linking Oct-4 and Sox2 in a 1:1 ratio on a single vector increased reprogramming efficiency in cells by a factor of four (FIG. 9A-B) when compared to reprogramming efficiency wherein the potency-determining factors were provided to cells in separate constructs and vectors, where the uptake ratio of the respective potency-determining factors into single cells was uncontrolled. Although the ratio of potency-determining factors may differ depending upon the set of potency-determining factors used, one of ordinary skill in possession of this disclosure can readily determine an optimal ratio of potency-determining factors.

Pluripotent cells can be cultured in any medium used to support growth of pluripotent cells. Typical culture medium includes, but is not limited to, a defined medium, such as TeSR™ (StemCell Technologies, Inc.; Vancouver, Canada), mTeSR™ (StemCell Technologies, Inc.) and StemLine® serum-free medium (Sigma; St. Louis, Mo.), as well as conditioned medium, such as mouse embryonic fibroblast (MEF)-conditioned medium. As used herein, a “defined medium” refers to a biochemically defined formulation comprised solely of biochemically-defined constituents. A defined medium may also include solely constituents having known chemical compositions. A defined medium may further include constituents derived from known sources. As used herein, “conditioned medium” refers to a growth medium that is further supplemented with soluble factors from cells cultured in the medium. Alternatively, cells can be maintained on MEFs in culture medium.

The inventors used a serial analysis of gene expression (SAGE) library to obtain transcriptome profiles of genes abundant in ES cells. Specifically, a SAGE library was used to identify potency-determining factors that regulate pluripotency and self-renewal in ES cells. SAGE libraries are well-known to one of ordinary skill in the art and are publicly available or can be specifically constructed by companies, such as Agencourt Bioscience Corp. (Beverly, Mass.).

In another aspect, the invention provides an enriched population of pluripotent cells substantially genetically identical to cells of a post-natal individual. The cells can be obtained by reprogramming somatic cells isolated from the post-natal individual. In some embodiments, the cell population is a purified population, representing at least 60%, 70%, 80% and advantageously greater than 95% of the cells in the population, and any and all whole or partial integers therebetween. The reprogrammed cells are euploid, exhibit cell morphology characteristic of pluripotent cells and express pluripotent cell-specific markers, such as, e.g., Oct-4, SSEA-3, SSEA-4, Tra-1-60, Tra-1-81 or combinations thereof, and form teratomas when introduced into an immunocompromised animal.

Yet another aspect provides methods and compositions for identifying and using potency-determining factors sufficient to reprogram somatic cells into pluripotent cells. As noted herein, the reprogrammed pluripotent cells contain the genetic complement of, and are substantially genetically identical to somatic cells obtained from a post-natal individual. Generally, methods for identifying potency-determining factors include the steps of introducing genetic material encoding one or a plurality of putative potency-determining factors into somatic cells receptive to uptake of the genetic material under conditions effective to express the factors encoded on the introduced genetic material at levels sufficient to reprogram the cells to a less differentiated, higher-potency state; and observing a population of pluripotent cells after introduction of the genetic material. The pluripotent cells can be characterized by cell morphology, pluripotent cell-specific markers or both. Advantageously, the pluripotent cells can be identified by expression in the treated cells of a marker provided in the cells so as to be expressed only upon reprogramming of the cells to a pluripotent state. Through this approach, potency-determining factors capable of reprogramming somatic cells into pluripotent cells can be identified, as is described in the examples below.

Genetic material encoding a potency-determining factor can be introduced by transfection or transduction into the somatic cells using a vector, such as an integrating- or non-integrating vector. Of particular interest herein are retroviral vectors. Retroviral vectors, particularly lentiviral vectors, are transduced by packaging the vectors into virions prior to contact with a cell. After introduction, the DNA segment(s) encoding the potency-determining factor(s) can be located extra-chromosomally (e.g., on an episomal plasmid) or stably integrated into cellular chromosome(s).

A viral-based gene transfer and expression vector is a genetic construct that enables efficient and robust delivery of genetic material to most cell types, including non-dividing and hard-to-transfect cells (primary, blood, stem cells) in vitro or in vivo. Viral-based constructs integrated into genomic DNA result in high expression levels. In addition to a DNA segment that encodes a potency-determining factor of interest, the vectors include a transcription promoter and a polyadenylation signal operatively linked, upstream and downstream, respectively, to the DNA segment. The vector can include a single DNA segment encoding a single potency-determining factor or a plurality of potency-determining factor-encoding DNA segments. A plurality of vectors can be introduced into a single somatic cell. The vector can optionally encode a selectable marker to identify cells that have taken up and express the vector. As an example, when the vector confers antibiotic resistance on the cells, antibiotic can be added to the culture medium to identify successful introduction of the vector into the cells. Integrating vectors can be employed, as in the examples, to demonstrate proof of concept. Retroviral (e.g., lentiviral) vectors are integrating vec-

tors; however, non-integrating vectors can also be used. Such vectors can be lost from cells by dilution after reprogramming, as desired. A suitable non-integrating vector is an Epstein-Barr virus (EBV) vector. Ren C, et al., *Acta. Biochim. Biophys. Sin.* 37:68-73 (2005); and Ren C, et al. *Stem Cells* 24:1338-1347 (2006), each of which is incorporated herein by reference as if set forth in its entirety.

The vectors described herein can be constructed and engineered using art-recognized techniques to increase their safety for use in therapy and to include suitable expression elements and therapeutic genes. Standard techniques for the construction of expression vectors suitable for use in the present invention are well-known to one of ordinary skill in the art and can be found in such publications such as Sambrook J, et al., "Molecular cloning: a laboratory manual," (3rd ed. Cold Spring Harbor Press, Cold Spring Harbor, N.Y. 2001), incorporated herein by reference as if set forth in its entirety.

The ability to identify and enrich for pluripotent cells can be facilitated by providing a non-lethal marker in the somatic cells, such as Green Fluorescent Protein (GFP), Enhanced Green Fluorescent Protein (EGFP) or luciferase, under the control of a promoter active only after the somatic cell has converted to a pluripotent state. A selectable marker gene is used to identify the reprogrammed cells expressing the marker through visible cell selection techniques, such as fluorescent cell sorting techniques. Alternatively, the reprogrammed cells can be produced without a selectable marker. In the examples below, a marker was provided in the genome of the somatic cells downstream of the promoter that regulates Oct-4 expression. The endogenous Oct4 promoter is active in undifferentiated, pluripotent ES cells. A drug-selectable population of Oct-4-expressing ES cells did not persist through the culture period necessary for myeloid differentiation. However, because some Oct-4 expression can persist into early stages of differentiation, it is appropriate to enrich the population for pluripotent cells by selecting colonies having characteristic ES cell morphology and by maintaining the cells under ES cell maintenance culture conditions. It is not intended that all cells in the reprogrammed cell culture have the desired level of potency. Given the inefficiencies of cell sorting technology, the variations in levels of gene expression and other biological effects, some cells in the enriched population may not be pluripotent. However, at a practical level, the reprogrammed cell population derived from somatic cells is enriched for pluripotent cells.

The non-lethal marker can be constructed to enable its subsequent removal using any of a variety of art-recognized techniques, such as removal via Cre-mediated, site-specific gene excision. For example, it may become desirable to delete the marker gene after the pluripotent cell population is obtained, to avoid interference by the marker gene product in the experiment or process to be performed with the cells. Targeted deletions can be accomplished by providing structure(s) near the marker gene that permits its ready excision. That is, a Cre/Lox genetic element can be used. The Lox sites can be built into the cells. If it is desired to remove the marker from the pluripotent cells, the Cre agent can be added to the cells. Other similar systems also can be used. Because Cre/Lox excision can introduce undesirable chromosomal rearrangements and can leave residual genetic material after excision, the inventors recognize the desirability of introducing the potency-determining factors into the somatic cells using non-integrating, episomal vectors and obtaining cells from which the episomal vectors are lost (e.g., at a rate of about 5%

per generation) by subsequently withdrawing the drug selection used to maintain the vectors during the reprogramming step.

The following examples are provided as further non-limiting illustrations of methods for identifying potency-determining genes or factors for converting somatic cells into pluripotent cells. In some examples, human H1 Oct4 knock-in ES cells were differentiated in stromal cell co-culture to yield cells suited for use as reprogrammable somatic cells. These cells are a model for cells isolated from a post-natal individual for use in a somatic cell reprogramming method.

The methods were repeated with other differentiated cell types. One cell type was human fetal lung fibroblast cells, IMR-90. See, Nichols W, et al., *Science* 196:60-63 (1977), incorporated herein by reference as if set forth in its entirety. IMR-90 cells are being extensively characterized by the ENCODE Consortium, are readily available from American Type Culture Collection (ATCC; Manassas, Va.; Catalog No. CCL-186), and have published DNA fingerprints that allow independent confirmation of the origin of reprogrammed clones. In addition, these cells proliferate robustly in Eagle's Minimal Essential Medium-10% FBS for more than twenty passages before undergoing senescence, but grow slowly in human ES cell culture conditions, a difference that provides a proliferative advantage to reprogrammed clones and aids in their selection by morphological criteria alone. Other differentiated cell types used in the methods were human post-natal foreskin fibroblast cells (ATCC; Catalog No. CRL-2097) and human adult skin cells (ATCC; Catalog No. CRL-2106).

The cells were made receptive for transduction with a viral expression system as described below. The somatic cells were transduced with polynucleotides encoding potency-determining factors thought to be associated with pluripotency, such that the somatic cells were reprogrammed to pluripotent cells. It is not yet determined whether all fourteen potency-determining factors provided in transduction vectors were taken up and expressed in the somatic cells. Having identified a set of fourteen potency-determining factors, and a subset of at least two of the fourteen factors, sufficient to reprogram somatic cells, the inventors provide one of ordinary skill in art with the ability to identify one or more specific subsets of the potency-determining factors that are also capable of somatic reprogramming, thereby facilitating identification of other subsets of such potency-determining factors. Accordingly, the methods described below facilitate the identification of the potency-determining factors involved in reprogramming somatic cells into pluripotent cells.

It is specifically envisioned that the set of potency-determining factors sufficient to reprogram somatic cells can vary with the cell type of the somatic cells. It is noted that exposure to a set of fourteen potency-determining factors resulted in conversion to a pluripotent status in cultures of the indicated somatic cells. As shown below, one can identify a set of potency-determining factors sufficient to reprogram other cell types by repeating the methods described below using different combinations of potency-determining factors, which may include some or all of the fourteen factors as well as other potency-determining factors. Consequently, one can produce pluripotent cell lines/populations that are substantially genetically identical to a pre-existing, differentiated, somatic cell.

EXAMPLES

In the following examples, differentiated cells received vectors that encoded various potency-determining factors. Some of the cells contained in their genome a marker gene

that encodes EGFP positioned downstream from the regulated Oct4 promoter, which is active only in pluripotent cells. The production of this useful tool is described in Yu et al., supra, which demonstrated that differentiated cells can become pluripotent via cell-cell fusion with human ES cells.

Example 1

Lentiviral Vector Packaging and Production

Transgene-expressing lentivirus vector was produced in 293FT cell lines (Invitrogen). 293T is a fast-growing, highly transfectable clonal variant derived from transformed 293 embryonal kidney cells, which contains the large T antigen for high-level expression of the packaging proteins that contribute to higher viral titers. For routine maintenance and expansion, these cells were cultured in 293FT medium (DMEM/10% FBS, 2 mM L-glutamine and 0.1 mM MEM Non-Essential Amino Acids) in the presence of 500 µg/ml geneticin. For packaging, 293FT cells were collected by trypsinization. Following removal of trypsin by centrifugation, these cells were aliquoted into T75 flasks (15×10⁶ cells/flask, and 6 flasks per construct) in 293FT medium without geneticin.

Co-transfection of lentiviral vector and two helper plasmids was carried out with Superfect® transfection reagent (Qiagen) immediately following cell aliquoting (lentiviral vector: MD.G:pCMVdeltaR8.9:Superfect®=5 µg:5 µg:10 µg:40 µl in 400 µl of Iscove's Modified Dulbecco's Medium (IMDM) (1×)/flask incubated at room temperature for 10 minutes). The next day, the culture medium containing the transfection mixture was replaced with fresh 293FT medium supplemented with 1 mM sodium pyruvate (8 ml/flask). Lentivirus-containing supernatant was collected around 48 to 72 hours after transduction (~48 ml per construct). The 293FT cell debris was removed from the supernatant by centrifugation at 3000 rpm (1750 g) for 15 minutes at 4° C. To concentrate the lentivirus, the supernatant was filtered through 0.4 µm cellulose acetate (CA) membrane (Corning, 115 ml low-protein binding), and ultracentrifuged in 70 ml sterilized bottles (Beckman, Cat#355622, polycarbonate for 45Ti rotor only) at 33,000 rpm (50,000 g) for 2.5 hours at 4° C. Lentivirus along with any remaining cell debris formed a visible pellet at the bottom of the centrifuge tube. Following supernatant removal, PBS (~300 µl for each construct) was added to resuspend the pellet by rocking the centrifuge tubes at 4° C. for 8 to 14 hours, or at room temperature for 2 hours. The remaining cell debris was removed by centrifugation at 5000 rpm (2700 g) for 5 minutes, and the resuspended lentivirus was aliquoted and stored at -80° C. The titer obtained generally ranged between 10⁷ to 10⁸ viral particles (vp)/ml after concentration. The sequence for a lentivirus (pSIN4-EF2-Stella-puro; SEQ ID NO:6, with the sequence for Stella from 3604 to 4083) harboring Stella (SEQ ID NO:1) is provided in the Sequence Listing. The same sequence was used for all other potency-determining factors (e.g., SEQ ID NOS: 2-5), except that the sequence for Stella (SEQ ID NO:1) was replaced with the sequence of another potency-determining factor.

To efficiently introduce potency-determining factors into myeloid cells, inventors modified the lentiviral expression system (FIG. 4A). Inventors reduced the size of the original lentiviral construct (>11 kb) by removing sequences neighboring 5' and 3' LTRs through serial deletion analysis. These modifications minimized the negative effect on the packaging efficiency. The titer obtained routinely ranged between 10⁵ to 10⁶ vp/ml of supernatant, and 10⁷ to 10⁸ vp/ml after concen-

tration (through ultracentrifugation). Restriction sites were introduced into the backbone for convenient exchanges of the coding regions for specific transgenes.

Example 2

Reprogramming of Myeloid Precursor Cells after Lentiviral Transduction and Expression of Potency-Determining Factors

To identify genes capable of reprogramming differentiated cells back to a state of pluripotency, efficient transduction of the cells is required. Inventors first tested the lentiviral transduction efficiency immediately after Percoll® purification of a human H1 Oct4 knock-in ES cells (FIG. 2).

H1.1 human ES cells (WiCell Research Institute; Madison, Wis.) were maintained on irradiated mouse embryonic fibroblasts (MEFs) in DMEM/F12 culture medium consisting of 80% Dulbecco's modified Eagle's medium (no pyruvate, high glucose formulation; Invitrogen; Carlsbad, Calif.) supplemented with 20% KnockOut serum replacer, 1% non-essential amino acids (Gibco), 1 mM L-glutamine, 0.1 mM β-mercaptoethanol (Sigma) and 4 ng/ml basic fibroblast growth factor (bFGF) (all from Invitrogen unless otherwise noted), as previously described (see Amit et al., *Dev Biol.* 227:271-278 (2000); and Thomson et al., *Science* 282:1145-1147 (1998), each of which is incorporated herein by reference as if set forth in its entirety). Feeder-free culture on Matrigel® (BD Biosciences; Bedford, Mass.) with chemically defined TeSR™ medium (StemCell Technologies, Inc.) was carried out as described in Ludwig et al. Ludwig T, et al, *Nat. Methods.* 3:637-646 (2006); and Ludwig T, et al., *Nat. Biotechnol.* 24:185-187 (2006), each of which is incorporated herein by reference as if set forth in its entirety.

The H1 Oct4 knock-in ES cell line was generated from the H1.1 human ES cells according to a method described by Zwaka & Thomson. U.S. Patent Publication No. 2006/0128018 and Zwaka T & Thomson J, *Nat. Biotechnol.* 21:319-321 (2003), each of which is incorporated herein by reference as if set forth in its entirety. Briefly, a gene targeting vector was constructed by inserting a cassette, an IRES-EGFP, an IRES-NEO and a simian virus polyadenylation sequence (approximately 3.2 kilobases (kb)) into the 3' untranslated region of the fifth exon of the human Oct-4 (octamer-binding transcription factor 4) gene, also known as POU domain, class 5, transcription factor 1 (POU5F1). This cassette was flanked in the 5' direction by a 6.3 kb homologous arm and by a 1.6 kb (6.5 kb in the alternative targeting vector) homologous arm in the 3' region (FIG. 1). The cassette was inserted at position 31392 of the Oct-4 gene (SEQ ID NO:2). The long arm contained a sequence from 25054-31392. The short arm contained a sequence from 31392-32970. In an alternative targeting vector, the short arm was substituted by a longer homologous region (31392-32970 in AC006047 plus 2387-7337 in gene accession number AC004195). Isogenic homologous DNA was obtained by long-distance, genomic PCR and subcloned. All genomic fragments and the cassette were cloned into the multiple cloning site (MCS) of a cloning vector, pBluescript® SK II (GenBank Accession Number X52328; Stratagene; La Jolla, Calif.).

For electroporation, cells were harvested with collagenase IV (1 mg/ml, Invitrogen) for 7 minutes at 37° C., washed with medium and re-suspended in 0.5 ml culture medium (1.5-3.0×10⁷ cells). To prepare the cells for electroporation, cells were added to 0.3 ml phosphate-buffered saline (PBS; Invitrogen) containing 40 mg linearized targeting vector DNA.

13

Cells were then exposed to a single 320 V, 200 μ F pulse at room temperature using a BioRad Gene Pulser® II (0.4 cm gap cuvette). Cells were incubated for ten minutes at room temperature and were plated at high-density on Matrigel®. G418 selection (50 mg/ml; Invitrogen) was started 48 hours after electroporation. After one week, G418 concentration was doubled. After three weeks, surviving colonies were analyzed individually by PCR using primers specific for the NEO cassette and for the POU5F1 gene just downstream of 3' homologous region, respectively. PCR-positive clones were re-screened by Southern blot analysis using BamHI digested DNA and a probe outside the targeting construct.

The H1 Oct4 knock-in ES cell line expressed both EGFP and neomycin phosphotransferase (neo) from an endogenous Oct4 promoter/regulatory region using dual internal ribosome-entry sites (IRES) (FIG. 3). Expression of EGFP and neo in the H1 Oct4 knock-in ES cells indicated an active, endogenous Oct4 promoter/regulatory region.

H1 Oct4 knock-in ES cells were maintained through co-culture with mouse OP9 bone marrow stromal cells (FIG. 2A) maintained on gelatin-coated 10 cm plastic dishes (BD Biosciences) consisting of: DMEM medium (Invitrogen) supplemented with 20% non-heat-inactivated defined fetal bovine serum (FBS; HyClone Laboratories; Logan, Utah) (10 ml/dish). The OP9 cultures were split every 4 days at a ratio of 1:7. For use in human ES cell differentiation, after OP9 cells reached confluence on the fourth day, half of the medium was changed, and the cells were cultured for an additional four days.

For reprogramming, H1 Oct4 knock-in ES cells were differentiated into attached cells (i.e., CD29+CD44+CD166+CD105+CD73+CD31-). Briefly, human H1 Oct4 knock-in ES cells (p76 to 110) were added to the OP9 monolayer (1.5×10^6 /10-cm dish) in 20 ml of DMEM medium supplemented with 10% FBS (HyClone Laboratories) and 100 μ M monothioglycerol (MTG; Sigma; St. Louis, Mo.). The human ES/OP9 cell co-culture was incubated for nine days with changes of half of the medium on days 4, 6 and 8. After incubation, the co-culture was dispersed into individual cells by collagenase IV treatment (1 mg/ml in DMEM medium, Invitrogen) for 20 minutes at 37° C., followed by trypsin treatment (0.05% Trypsin/0.5 mM EDTA, Invitrogen) for 15 minutes at 37° C. Cells were washed twice with medium and re-suspended at 2×10^6 /ml in DMEM medium supplemented with 10% FBS, 100 μ M MTG and 100 ng/ml GM-CSF (Leukine; Berlex Laboratories Inc.; Richmond, Calif.). Cells were further cultured in flasks coated with poly (2-hydroxyethyl methacrylate) (pHEMA; Sigma) for 10 days with changes of half of the medium every 3 days. During adhesion-preventing pHEMA culture, cells that would otherwise be adherent formed floating aggregates, while the cells of interest grew as individual cells in suspension. Large cell aggregates were removed by filtration through 100 μ M cell strainers (BD Biosciences), while small aggregates and dead cells were removed by centrifugation through 25% Percoll® (Sigma). The differentiated cells recovered from the cell pellet expressed CD33, MPO, CD11b and CD11c molecules, which are characteristic for bone marrow myeloid cells (FIG. 2B). Inventors routinely produce $6-10 \times 10^6$ differentiated cells from $1-10^6$ H1 ES cells (human H1 Oct4 knock-in ES cells). See also, Yu J, et al., Science 318:1917-1920 (2007), including the supplemental materials available at the Science website on the World Wide Web, incorporated herein by reference as if set forth in its entirety.

Lentivirus encoding a potency-determining factor (MOI: 3 to 10) was added to the cell culture after addition of polybrene carrier at a final concentration of 6 μ g/ml (Sigma). The len-

14

tivirus-containing medium was replaced with fresh medium the next day, and cells were cultured further in appropriate medium. Drug selection, if needed, started the third day after transduction. As shown in FIG. 5B, the transduction efficiency was very low (~18.4% at MOI of 10). Moreover, the expression of EGFP was barely above background. Similar results have been obtained with routine plasmid or Epstein-Barr virus nuclear antigen (EBNA)-based plasmid transfections (data not shown).

On the other hand, cells having high transduction efficiency were prepared as follows. The Percoll®-purified H1 Oct4 knock-in ES cells were allowed to differentiate further to mesenchymal-like cells for an additional seven days in the presence of GM-CSF on Matrigel®, as described above. Many cells attached to the plate during this culture period. The attached cells (referred to herein below as Oct4KICD45+A cells, or simply as CD45+A cells) showed significantly higher transduction efficiency (FIG. 4C) and were used for this reprogramming experiment. While the cells were not CD45+ at the time of the experiments, the cells were obtained from CD45+ cells. As noted elsewhere herein, cell surface markers on the attached cells were characterized as CD29+, CD44+, CD166+, CD105+, CD73+ and CD31-.

Inventors tested the hypothesis that differentiated cells could be reprogrammed to a state of pluripotency by expressing potency-determining factors in Oct4KICD45+A cells (FIG. 3), and obtained promising results. Because Nanog and Oct-4 are the best characterized potency-determining factors, inventors examined the effect of their over-expression in the cells.

The Oct4KICD45+A cells were first dissociated to individual cells with trypsin and replated onto Matrigel® at $\sim 10^5$ cells/well of 6-well plates in TeSR™ medium. Transgene-expressing lentiviral transduction was carried out the next day. Nanog-expressing Oct4KICD45+A cells showed similar morphology to that of EGFP transfected cells (FIG. 5). Nanog over-expression, however, significantly enhanced Oct4KICD45+A cell proliferation, similar to that observed in human ES cells. Following neomycin selection for an active endogenous Oct4 promoter/regulatory region, no Nanog- or EGFP-transfected cells survived. Importantly, these results indicate that a drug-selectable population of Oct-4-expressing ES cells does not persist through the culture period necessary for differentiation. Oct-4 expression resulted in dramatic morphological changes (FIG. 5), and many of these cells survived neomycin selection. None of these cells, however, exhibited morphology typical of human ES cells. The Oct4KICD45+A cells co-expressing Nanog and Oct-4 showed morphological changes similar to those observed in cells expressing Oct-4 alone. Thus, it appears that the two key potency-determining factors, Nanog and Oct-4, alone were not sufficient to convert differentiated cells to pluripotency.

Cells were analyzed using cell-sorting methods before and after exposing the somatic cells to the factors. Adherent cells were individualized by trypsin treatment (0.05% Trypsin/0.5 mM EDTA, Invitrogen), and fixed in 2% paraformaldehyde for 20 minutes at room temperature. The cells were filtered through a 40- μ m mesh, and resuspended in FACS buffer (PBS containing 2% FBS and 0.1% sodium azide). Cells grown in suspension were stained in the FACS buffer supplemented with 1 mM EDTA and 1% normal mouse serum (Sigma). Intracellular myeloperoxidase (MPO) staining was performed using Fix & Perm® reagents (Caltag Laboratories; Burlingame, Calif.). About 100 μ l of cell suspension containing 5×10^5 cells was used in each labeling. Both primary and secondary antibody incubation (where applied) were carried out at room temperature for 30 minutes. Control samples

15

were stained with isotype-matched control antibodies. After washing, the cells were resuspended in 300-500 μ l of the FACS buffer, and analyzed on a FACSCalibur flow cytometer (BDIS; San Jose, Calif.) using CellQuest™ acquisition and analysis software (BDIS). A total of 20,000 events were acquired. All of the antibodies used in the flow cytometry analysis are listed in Table 1. The final data and graphs were analyzed and prepared using FlowJo software (Tree Star, Inc.; Ashland, Oreg.).

TABLE 1

Antibodies for flow cytometry.				
ANTIGEN	LABEL	Clone/ Product#	ISOTYPE	VENDOR
SSEA-3	None	MAB4303	ratIgM	Chemicon
SSEA-3	None	14-8833-80	ratIgM	eBioscience
SSEA-4	None	MAB4304	mIgG3	Chemicon
SSEA-4	APC	FAB1435A	mIgG3	R&D systems
Tra-1-60	None	MAB4360	mIgM	Chemicon
Tra-1-81	None	MAB4381	mIgM	Chemicon
CD29	PE	MCA2298PE	IgG	AbD Serotec
Tra-1-85	APC	FAB3195A	mIgG1	R&D Systems
CD140a	PE	556002	mIgG2a	BD Pharmingen
CD56	PE	340724	mIgG2b	BDIS
CD73	PE	550257	mIgG1	BD Pharmingen
CD105	PE	MHCD10504	mIgG1	Caltag
CD31	FITC	557508	mIgG1	BD Pharmingen
CD34	FITC	555821	mIgG1	BD Pharmingen

BD Pharmingen (San Diego, CA)

BD Immunocytometry Systems (BDIS) (San Jose, CA)

Caltag Laboratories (Burlingame, CA)

Chemicon International (Temecula, CA)

AbD Serotec (Raleigh, NC)

NA—not applicable.

To further evaluate the potency-determining factors involved in reprogramming these cells, inventors explored the transduction of pools of ES cells enriched with various combinations of potency-determining factors. An exemplary pool of potency-determining factors for reprogramming myeloid precursors included the fourteen potency-determining factors described in Table 2 below.

TABLE 2

Human ES cell-enriched genes.			
GENE SYMBOL	UNIGENE ID	ENTREZ ID	ACCESSION
POU5F1 (Human Oct-4)	Hs.249184	5460	NM_002701
Sox2	Hs.518438	6657	NM_003106
Nanog	Hs.329296	79923	NM_024865
FoxD3	Hs.546573	27022	NM_012183
UTF1	Hs.458406	8433	NM_003577
Stella	Hs.131358	359787	NM_199286
Rex1	Hs.335787	132625	NM_174900
ZNF206	Hs.334515	84891	NM_032805
Sox15	Hs.95582	6665	NM_006942
Mybl2	Hs.179718	4605	NM_002466
Lin28	Hs.86154	79727	NM_024674
DPPA2	Hs.351113	151871	NM_138815
ESG1	Hs.125331	340168	NM_001025290
Otx2	Hs.288655	5015	NM_172337

The expression of at least some of these fourteen factors in the Oct4KICD45+A cells resulted in colonies with typical morphology of pluripotent cells, such as human ES cells (FIG. 6A—left-hand photos). After neomycin selection from $\sim 10^5$ starting Oct4KICD45+A cells, over ten colonies having the distinct ES cell morphology initially appeared. More than half of these colonies were subsequently lost to differentia-

16

tion, suggesting either that over-expression of one or more introduced genes had a negative effect on the cells or that the cells continued to depend upon the foreign transgenes and gene silencing. Nevertheless, surviving colonies expressed the endogenous Oct4 promoter-driven EGFP (FIG. 7A—right-hand photos), indicating that the endogenous Oct4 promoter/regulatory region was reactivated.

In this embodiment, EGFP expression occurs when the native Oct4 promoter/regulatory region is active. In other words, undifferentiated cells are identified by a green color that disappears when the cells differentiate. Thus, the expression of endogenous Oct-4 in the primate ES cells was selectable. These colonies also expressed Oct-4, SSEA3, SSEA4, Tra-1-60 and Tra-1-81 pluripotent cell-specific markers (FIG. 6B). Similar results were obtained in reprogrammed colonies obtained using chemically defined TeSR™ medium.

Inventors randomly picked six colonies from two separate transfections with the same pool of fourteen ES cell-enriched potency-determining factors, and propagated five stable colonies for at least eight weeks. Thus, inventors identified a novel approach for reprogramming primate somatic cells to become higher potency cells by administering fourteen potency-determining factors into the somatic cells.

When these cells were exposed to other combinations of potency-determining factors (i.e., Sox2, c-Myc, Oct 3/4 and Klf4) using the lentiviral delivery system described herein, reprogramming and conversion of the cells were not observed.

Inventors used the techniques described herein to screen for subsets of the fourteen tested factors that are sufficient to reprogram the tested cells. Inventors' set of fourteen sufficient factors was subsequently narrowed to a set of six, and then four genes sufficient to reprogram these cells (FIGS. 7A-B; described further below). The four genes shown to be sufficient in combination to yield stable pluripotent cell were Oct-4, Nanog, Sox2 and Lin28, as shown in FIG. 7B.

Example 3

Reprogramming of Mesenchymal-Like Cells with a Limited Set of Four Potency-Determining Factors after Lentiviral Transduction

To identify a more limited set of potency-determining factors capable of reprogramming differentiated cells back to pluripotency, the above-identified methods were repeated with a combination of Pou5F1 (Oct-4), Nanog, Sox2 and Lin28. Inventors used the techniques described above to screen these potency-determining factors for their ability to reprogram cells.

A different cell type was used in this example to further demonstrate the utility of the methods. The cell type was a mesenchymal-like clonal cell directly differentiated from human H1 Oct4 knock-in ES cells, as described above. As used herein, "clonal" refers to a characteristic of a population of cells derived from a common ancestor (i.e., derived from a single cell, not derived from a cell aggregate). That is, in a "clonal population," the cells display a uniform pattern of cell surface markers and morphological characteristics, as well as being substantially genetically identical.

Briefly, human H1 Oct4 knock-in ES cells (p76 to p110) were induced to differentiate in co-culture with mouse OP9 bone marrow stromal cells. See, Vodyanik M, et al., Blood 105:617-626 (2005), incorporated herein by reference as if set forth in its entirety. Small aggregates of human H1 Oct4 knock-in ES cells were added to OP9 cells in alpha MEM supplemented with 10% FCS and 100 μ M MTG (Sigma). On

17

the next day (day 1) of culture, the medium was changed, and the cultures were harvested on the days indicated below.

On day 2 of co-culture, mesodermal commitment was detected by a peak expression of transcription factors for mesendoderm (GSC, MIXL1 and T (BRACHYURY)) and early mesoderm (EVX1, LHX1 and TBX6) with Nimble-Gen® (Madison, Wis.) microarrays. During days 3-5, specification of endoderm and mesodermal lineages was observed. This stage was accompanied with sustained expression of genes involved in epithelial-mesenchymal transition (EMT; SNAIL and SLUG) and cell expansion (HOXB2-3). It also coincided with a maximal cell proliferation rate in human H1 Oct4 knock-in ES cells/OP9 co-culture.

Differentiation of specific mesendodermal lineages was observed on days 5-7 of co-culture, when markers of developing endoderm (AFP and SERPINA1), mesenchymal (SOX9, RUNX2 and PPARG2) and hematoendothelial (CDH5 and GATA1) cells were detected. However, muscle-inductive factors (MYOD1, MYF5 and MYF6) were not expressed throughout seven days of co-culture. Moreover, neuroectoderm (SOX1 and NEFL) or trophectoderm (CGB and PLAC) markers were not detected, indicating that OP9 cells provided an efficient inductive environment for directed hESC differentiation toward the mesendodermal pathway.

Also on day 2, a single-cell suspension of the human ES cell-derived cells was harvested by successive enzymatic treatment with collagenase IV (Gibco-Invitrogen) at 1 mg/ml in DMEM/F12 medium for 15 minutes at 37° C. and 0.05% Trypsin-0.5 mM EDTA (Gibco-Invitrogen) for 10 minutes at 37° C. Cells were washed 3 times with PBS-5% FBS, filtered through 70 µm and 30 µm cell strainers (BD Labware; Bedford, Mass.) and labeled with anti-mouse CD29-PE (AbD Serotec; Raleigh, N.C.) and anti-PE paramagnetic monoclonal antibodies (Miltenyi Biotech; Auburn, Calif.). The cell suspension was purified with magnet-activated cell sorting (MACs) by passing it through a LD magnetic column attached to a Midi-MACS separation unit (Miltenyi Biotech) to obtain a negative fraction of OP9-depleted, human H1 Oct4 knock-in ES cell-derived cells. Purity of human H1 Oct4 knock-in ES cell-derived cells was verified using pan anti-human TRA-1-85 monoclonal antibodies (R&D Systems; Minneapolis, Minn.).

Purified human H1 Oct4 knock-in ES cell-derived cells were plated at density of 2×10^4 cells/ml on semisolid, serum-free medium composed of StemLine™ serum-free medium (Sigma) supplemented with 5-100 ng/ml basic fibroblast growth factor (bFGF; PeproTech; Rocky Hill, N.J.) and 1% methylcellulose (StemCell Technologies, Inc.) with or without 10-20 ng/ml PDGF-BB (PeproTech). PDGF-BB improved growth of mesenchymal cells, but was not essential for colony formation. After 14-21 days of culture, large, compact mesenchymal colonies formed, resembling embryoid bodies (EBs). Mesenchymal colonies were detected on day 7; however, 14-21 days were required to reveal actively growing colonies.

Individual mesenchymal colonies were transferred to wells of a collagen- or fibronectin-coated, 96-well plate pre-filled with 0.2 ml/well StemLine® serum-free medium supplemented with 5-100 ng/ml bFGF. After 3-4 days of culture, adherent cells from individual wells were harvested by trypsin treatment and expanded on collagen- or fibronectin-coated dishes in StemLine® serum-free medium with 5-100 ng/ml bFGF.

Transgene-expressing lentiviral transduction was then carried out as described above. Inventors tested the hypothesis that differentiated mesenchymal-like cells could be reprogrammed to a state of pluripotency by expressing a limited set

18

of potency-determining factors (e.g., Oct-4, Nanog, Sox2 and Lin28). The expression of at least these four potency-determining factors resulted in colonies having cells with typical morphology of pluripotent cells, such as human ES cells (FIG. 7B; dark gray bars). As shown in FIG. 7B, the greatest number of colonies having cells with typical morphology of pluripotent cells was obtained using the full complement of Oct-4, Nanog, Sox2 and Lin28. However, when one of Oct-4, Nanog, Sox2 or Lin28 was absent, the number of ES-like colonies was significantly attenuated (e.g., Nanog or Lin28) or absent (e.g., Oct-4 or Sox2).

In this embodiment, EGFP expression occurred when the native Oct4 promoter/regulatory region was active. In other words, undifferentiated cells were identified by a green color that was absent from differentiated cells. Thus, the expression of endogenous Oct-4 in the cells was selectable. Reprogrammed colonies also expressed Oct-4, SSEA3, SSEA4, Tra-1-60 and Tra-1-81 pluripotent cell-specific markers (data not shown).

Inventors randomly picked six colonies from two separate transfections with the same pool of fourteen ES cell-enriched potency-determining factors, and propagated five stable colonies for at least eight weeks. Thus, inventors identified a novel approach for reprogramming primate somatic cells to become higher potency cells by administering four potency-determining factors into the somatic cells.

When these cells were exposed to other combinations of potency-determining factors (i.e., Sox2, c-Myc, Oct 3/4 and Klf4) using the lentiviral delivery system described herein, reprogramming and conversion of the cells were not observed.

Example 4

Reprogramming of Mesenchymal-Like Cells with a Limited Set of Two Potency-Determining Factors after Lentiviral Transduction

To identify an even more limited set of potency-determining factors capable of reprogramming differentiated cells back to pluripotency, the above-identified methods were repeated in the mesenchymal-like cells of Example 3 with a combination of two of the following four potency-determining factors: Oct-4, Nanog, Sox2 and Lin28. Inventors used the techniques described above to screen these potency-determining factors for their ability to reprogram cells.

Transgene-expressing lentiviral transduction was then carried out as described above. Inventors tested the hypothesis that differentiated mesenchymal-like cells could be reprogrammed to a state of pluripotency by expressing fewer than four potency-determining factors. The expression of at least Oct-4 and Sox2 (FIG. 7C) resulted in colonies having cells with typical morphology of pluripotent cells, such as human ES cells. Nanog and Lin28, singly and in combination, had a beneficial effect in clone recovery by improving reprogramming efficiency in human ES cell-derived mesenchymal cells to a state of pluripotency, but were essential neither for the initial appearance of reprogrammed cells nor for the expansion of reprogrammed cells.

Example 5

Reprogramming of a Differentiated Cells after Lentiviral Transduction and Expression of Four Potency-Determining Factors

To further demonstrate the utility of the limited set of potency-determining factors in reprogramming differentiated

cells back to pluripotency, the above-identified methods were repeated with ATCC Catalog No. CCL-186 (IMR-90; ATCC), which are human fetal lung fibroblast cells (see also, Birney E, et al., Nature 447:799-816 (2007)).

Transgene-expressing lentiviral transduction was carried out as described above. That is, IMR-90 cells (0.9×10^6 /well), were transduced with a combination of Oct-4, Sox2, Nanog and Lin28. Inventors tested the hypothesis that differentiated fibroblast cells could be reprogrammed to a state of pluripotency by expressing a limited set of potency-determining factors (e.g., Oct-4, Sox2, Nanog and Lin28). Following transduction, cells were transferred to three 10-cm dishes seeded with irradiated mouse embryonic fibroblasts (MEFs). By day 12 post-transduction, small colonies with human ES cell morphology became visible. On day 20 post-transduction, a total of 198 colonies were visible on 3 plates. Forty-one of the colonies were picked, thirty-five of which were successfully expanded for an additional three weeks. Six of these colonies were then selected for continued expansion and analysis, and the other twenty-nine were frozen.

The introduction of at least Oct-4, Sox2, Nanog and Lin28 resulted in colonies with typical morphology of pluripotent cells like human ES cells that had a normal karyotype. Cells from each colony likewise expressed telomerase activity and expressed human ES cell-specific surface antigens (i.e., SSEA-3, SSEA-4, Tra-1-60 and Tra1-81). For each of the colonies, the expression of endogenous OCT4 and NANOG was at levels similar to that of pluripotent cells, although the exogenous expression of these genes did vary. Moreover, EB and teratoma formation demonstrated that the reprogrammed cells had a developmental potential to give rise to differentiated derivatives of all three primary germ layers.

DNA fingerprint analysis confirmed that these colonies were derived from IMR-90 cells and that they were not derived from human ES cells lines (e.g., H1, H7, H9, H13 and H14).

Similar to the data obtained with differentiated mesenchymal cells, the greatest number of colonies having cells with typical morphology of pluripotent cells, such as human ES cells was obtained using the full complement of Oct-4, Nanog, Sox2 or Lin28. However, when Oct-4, Nanog, Sox2 or Lin28 were absent, the number of ES-like colonies was significantly attenuated (e.g., Nanog or Lin28) or absent (e.g., Oct-4 or Sox2).

The colonies selected for expansion and detailed characterization proliferated for at least twelve weeks and retained typical characteristics of normal pluripotent cells, even though no selection for the activation of a pluripotency-specific gene was applied during reprogramming.

Reprogrammed cells were identified based on morphology alone (i.e., having a compact colony with high nucleus to cytoplasm ratio and prominent nucleolus). Reprogrammed cells also expressed Oct-4, SSEA3, SSEA4, Tra-1-60 and Tra-1-81 pluripotent cell-specific markers.

Example 6

Reprogramming of Differentiated Cells after Lentiviral Transduction and Expression of Three Potency-Determining Factors

To further demonstrate the utility of the limited set of potency-determining factors in reprogramming differentiated cells back to pluripotency, the above-identified methods were repeated with the IMR-90 cells, described above. In this set of experiments, fewer potency-determining factors were used than in Example 5.

Transgene-expressing lentiviral transduction was carried out as described above. IMR-90 cells were transduced with a combination of three of the following: Oct-4, Sox2, Nanog and Lin28. Inventors tested the hypothesis that differentiated fibroblast cells could be reprogrammed to a state of pluripotency by expressing the even more limited set of potency-determining factors. The expression of at least three factors resulted in colonies with typical morphology of pluripotent cells like human ES cells. Reprogrammed colonies having cells with typical morphology of pluripotent cells were obtained using the full complement of Oct-4, Sox2 and Nanog with or without Lin28. Therefore, the presence or absence of Lin28 did not affect reprogramming. However, when any of Oct-4, Nanog or Sox2 was absent, the number of reprogrammed colonies was significantly attenuated or absent.

To examine for the presence of Oct-4, Sox2, Nanog and Lin28 provirus in the reprogrammed cells, PCR with transgene-specific primer pairs (see, Table 3; one gene-specific primer and one lentiviral vector-specific primer) was carried out using genomic DNA from IMR-90 clones as template. The reactions employed the pfx DNA polymerase (Invitrogen, amplification buffer was used at 2x, and enhancer solution was used at 3x), and the following conditions: initial denaturation for 1 minute at 95° C.; 35 cycles of 94° C. for 30 seconds, 55° C. for 30 seconds, 68° C. for 2 minutes; and followed by 68° C. for 7 minutes. PCR analysis for the transgenes showed that either all four transgenes or three transgenes (i.e., Oct-4, Sox2 and Nanog) integrated into the pluripotent cells following exposure to transgene-expressing lentivirus vectors.

TABLE 3

Primer sets for assessing provirus integration.				
Genes	Size (bp)		Sequences (5' to 3')	
OCT4	656	OCT4-F1	CAGTGCCCCGAAACCCACAC (SEQ ID NO: 7)	
		SP3	AGAGGAACTGCTTCCTTCACGACA (SEQ ID NO: 8)	
NANOG	732	NANOG-F2	CAGAAGGCCTCAGCACCTAC (SEQ ID NO: 9)	
		SP3	AGAGGAACTGCTTCCTTCACGACA (SEQ ID NO: 8)	
SOX2	467	SOX2-F1	TACCTCTTCTCCCACTCCA (SEQ ID NO: 10)	
		SP3	AGAGGAACTGCTTCCTTCACGACA (SEQ ID NO: 8)	
LIN28	518	LIN28-F1	AAGCGCAGATCAAAGGAGA (SEQ ID NO: 11)	
		SP3	AGAGGAACTGCTTCCTTCACGACA (SEQ ID NO: 8)	
OCT4endo	113	OCT4-F2	AGTTTGTGCCAGGGTTTTTG (SEQ ID NO: 12)	
		OCT4-R2	ACTTACCTTCCCTCCAACC (SEQ ID NO: 13)	

Reprogrammed cells were identified based on morphology alone (i.e., having a compact colony with high nucleus to cytoplasm ratio and prominent nucleolus). Reprogrammed cells also expressed Oct-4, SSEA3, SSEA4, Tra-1-60 and Tra-1-81 pluripotent cell-specific markers.

21

Example 7

Reprogramming of Differentiated Cells after
Lentiviral Transduction and Expression of Three
Potency-Determining Factors

To further demonstrate the utility of the limited set of potency-determining factors in reprogramming differentiated cells to pluripotency, the above-identified methods were repeated with ATCC Catalog No. CRL-2097 (ATCC), which are human post-natal foreskin fibroblast cells.

Transgene-expressing lentiviral transduction was carried out as described above. Post-natal fibroblast cells (0.6×10^6 /well) were transduced with a combination of Oct-4, Sox2, Nanog and Lin28. Inventors tested the hypothesis that differentiated, post-natal, fibroblast cells could be reprogrammed to a state of pluripotency by expressing a limited set of potency-determining factors and obtained promising results. Following transduction, cells were transferred to three 10-cm dishes seeded with irradiated MEFs. By day 15 post-transduction, small colonies with pluripotent cell morphology became visible. On day 20 post-transduction, a total of 57 colonies were visible on the plates. Twenty-nine of the colonies were picked, twenty-seven of which were successfully expanded for an additional three weeks. Four of these colonies were then selected for continued expansion and analysis, and the other twenty-three were frozen.

The expression of Oct-4, Sox2, Nanog and Lin28 resulted in colonies having cells with typical morphology of pluripotent cells, such as human ES cells, and a normal karyotype. Reprogrammed colonies likewise expressed telomerase activity and expressed pluripotent cell-specific markers (i.e., SSEA-3, SSEA-4, Tra-1-60 and Tra1-81). For each, endogenous OCT4 and NANOG was expressed at levels similar to that observed in human pluripotent cells, although the exogenous expression of these genes varied. Moreover, EB and teratoma formation demonstrated that the reprogrammed cells had a developmental potential to give rise to differentiated derivatives of all three primary germ layers. However, in contrast to the iPS cells obtained from IMR-90 cells, iPS cells derived from CRL-2097 cells showed a variation in the lineages apparent in teratomas examined at five weeks. Two of the iPS cell colonies showed neural differentiation; whereas the other two colonies showed multiple foci of columnar epithelial cells, reminiscent of primitive ectoderm.

DNA fingerprint analysis confirmed that these colonies were derived from the original cell line and confirmed that they were not derived from human ES cells lines (e.g., H1, H7, H9, H13 and H14).

Similar to the data obtained after transduction of differentiated mesenchymal cells, the greatest number of colonies having cells with typical morphology of human pluripotent cells were obtained using the full complement of Oct-4, Sox2, Nanog and Lin28. Interestingly, one cell line lacked Lin28, confirming that Lin28 was not essential for reprogramming somatic cells.

The colonies selected for expansion and detailed characterization proliferated for at least twelve weeks and retained typical characteristics of normal human pluripotent cells, even though no selection for the activation of a pluripotency-specific gene was applied during reprogramming.

Reprogrammed cells were identified based on morphology alone (i.e., having a compact colony with high nucleus to cytoplasm ratio and prominent nucleolus). Reprogrammed cells also expressed Oct-4, SSEA3, SSEA4, Tra-1-60 and Tra-1-81 pluripotent cell-specific markers.

22

When these cells were exposed to other combinations of factors (i.e., Sox2, c-Myc, Oct 3/4 and Klf4) using the lentiviral delivery system described herein, reprogramming and conversion of the cells were not observed.

Example 8

Reprogramming of Differentiated Cells after
Lentiviral Transduction and Expression of Four
Potency-Determining Factors

To further demonstrate the utility of the limited set of potency-determining factors in reprogramming differentiated cells to pluripotency, the above-identified methods were repeated with ATCC Catalog No. CRL-2106 (SK46; ATCC), which are human adult skin cells.

Transgene-expressing lentiviral transduction was carried out as described above. That is, skin cells (2.0×10^5 /well) were transduced with a combination of Oct-4, Sox2, Nanog and Lin28. Inventors tested the hypothesis that adult skin cells could be reprogrammed to a state of pluripotency by expressing a limited set of potency-determining factors and obtained promising results. Following transduction, cells were transferred to three 10-cm dishes seeded with irradiated mouse embryonic fibroblasts (MEFs). After 10 days in human ES cell culture medium human ES cell culture medium conditioned with irradiated MEFs was used to support cell growth. By day 18 post-transduction, small colonies with pluripotent cell morphology became visible.

The expression of Oct-4, Sox2, Nanog and Lin28 resulted in colonies having cells with typical morphology of pluripotent cells (see, FIG. 8A), such as human ES cells (i.e., having a compact colony with high nucleus to cytoplasm ratio and prominent nucleolus). As shown in FIG. 8B, the reprogrammed cells also expressed cell surface markers typical of pluripotent cells; SK46 cells (control), however, did not. However, the reprogrammed colonies from adult skin cells appeared later than the cells in Example 7 and had a lower reprogramming efficiency than the cells in Example 7.

Example 9

Increasing Reprogramming Efficiency by Linking
Potency-Determining Factors on a Single Construct

To increase the reprogramming efficiency, the above-identified methods were repeated using the construct shown in FIG. 4A; however, either Oct-4 or Sox2 were inserted in the transgene section, and Sox2 optionally replaced the puromycin resistance gene. The constructs were then expressed either in 293FT cells or in OCT4 knock-in human H1 ES cells (p6).

Transgene-expressing lentiviral transduction was carried out as described above. That is, 293FT cells or mesenchymal cells ($\sim 2 \times 10^5$ cells/well of 6-well plate, seeded overnight) were transduced with various transgene combinations. Cells were transferred to 10 cm MEF dish (1 well of 6-well plate to 1x10 cm MEF dish) following the overnight incubation with lentivirus. Geneticin selection (50 μ g/ml) for an active, endogenous, OCT4 promoter was carried out between day 11 to 15 post transduction. iPS colonies were counted on day 16.

FIG. 9A demonstrates that Oct-4 and Sox2 expression occurred in 293FT cells following transfection (see, e.g., lanes 1-3). In FIGS. 9A-B, pSin4-EF2-Oct4-IRES1-Sox2 is abbreviated as OS-IRES1; pSin4-EF2-Oct4-IRES2-Sox2 is abbreviated as OS-IRES2; pSin4-EF2-Oct4-F2A-Sox2 is

23

abbreviated as OS-F2A; pSin4-EF2-Oct4-IRES1-puro is abbreviated as O; and pSin4-EF2-Sox2-IRES1-puro is abbreviated as S.

FIG. 9B shows that reprogramming efficiency increased in mesenchymal cells derived from OCT4 knock-in human H1 ES cells (p6) when Oct-4 and Sox2 were provided on the same construct (IRES1 is a very low-efficiency internal ribosome entry site; whereas IRES2 is a high-efficiency internal ribosome entry site). OS-IRES2+N+L (the high-efficiency IRES) showed an approximate four fold increase in reprogramming efficiency when compared to O+S, O+S+N+L or OS-IRES1 (the low-efficiency IRES)+N+L. Therefore, providing the potency-determining factors in one construct that provides for approximately equal expression levels of each can improve reprogramming efficiency.

24

It is understood that certain adaptations of the invention described in this disclosure are a matter of routine optimization for those skilled in the art, and can be implemented without departing from the spirit of the invention, or the scope of the appended claims.

All publications and patents mentioned in the above specification are herein incorporated by reference. Various modifications and variations of the described method and system of the invention will be apparent to those skilled in the art without departing from the scope and spirit of the invention. It is understood, however, that examples and embodiments of the present invention set forth above are illustrative and not intended to confine the invention. The invention embraces all modified forms of the examples and embodiments as come within the scope of the following claims.

SEQUENCE LISTING

<160> NUMBER OF SEQ ID NOS: 13

<210> SEQ ID NO 1

<211> LENGTH: 480

<212> TYPE: DNA

<213> ORGANISM: Homo sapiens

<220> FEATURE:

<221> NAME/KEY: misc_feature

<222> LOCATION: (1)..(480)

<223> OTHER INFORMATION: Stella

<400> SEQUENCE: 1

```
atggaccat cagctttaa tccaacctac atcccagggt ctccacaaat gctcaccgaa    60
gaaaattccc gggacgattc aggggcctct caaatctcct ccgagacggt gataaagaac    120
cttagtaact tgactatcaa cgctagtagc gaatctgttt cccctctatc ggaagcttta    180
ctccgctgag agtctgtagg agcagcagtc ctccgggaaa tcgaagatga gtggctttac    240
agcaggagag gagtaagaac attgctgtct gtgcagagag aaaagatggc aagattgaga    300
tacatgttac tcggcggagt tcgtacgcat gaaagaagac caacaaacaa ggagcctaag    360
ggagttaaga aggaatcaag accattcaaa tgtccctgca gtttctgcgt gtctaataga    420
tgggatcctt ctgagaatgc tagaataggg aatcaagaca ccaagccact tcagccataa    480
```

<210> SEQ ID NO 2

<211> LENGTH: 1083

<212> TYPE: DNA

<213> ORGANISM: Homo sapiens

<220> FEATURE:

<221> NAME/KEY: misc_feature

<222> LOCATION: (1)..(1083)

<223> OTHER INFORMATION: Oct-4

<400> SEQUENCE: 2

```
atggcgggac acctggcttc ggatttcgcc ttctgcgcc ctccaggagg tggaggatgat    60
gggccagggg ggcgggagcc gggctgggtt gatcctcgga cctggctaag cttccaaggc    120
cctcctggag ggcagggaat cgggcgggg gttgggccag gctctgaggt gtgggggatt    180
ccccatgcc ccccgccgta tgagttctgt ggggggatgg cgtactgtgg gcccagggtt    240
ggagtggggc tagtgcccca aggcggcttg gagacctctc agcctgaggg cgaagcagga    300
gtcgggggtg agagcaactc cgatggggcc tcccggagc cctgcaccgt caccctggt    360
gccgtgaagc tggagaagga gaagctggag caaaaccgg aggagtccca ggacatcaaa    420
gctctgcaga aagaactcga gcaatttgcc aagctcctga agcagaagag gatcacctg    480
```

-continued

ggatatacac aggccgatgt ggggctcacc ctgggggttc tatttgggaa ggtattcagc	540
caaacgacca tctgccgtt tgaggctctg cagcttagct tcaagaacat gtgtaagctg	600
cggcccttgc tgcagaagt ggtggaggaa gctgacaaca atgaaaatct tcaggagata	660
tgcaaagcag aaacctcgt gcaggcccg aagagaaagc gaaccagtat cgagaaccga	720
gtgagaggca acctggagaa tttgttctg cagtgcctga aaccacact gcagcagatc	780
agccacatcg ccagcagct tgggctcgag aaggatgtgg tccgagtgtg gttctgtaac	840
cggcgccaga agggcaagcg atcaagcagc gactatgcac aacgagagga ttttgaggct	900
gctgggtctc ctttctcagg gggaccagtg tcctttctc tggccccagg gccccatctt	960
ggtacccag gctatgggag cctcacttc actgactgt actcctcggc ccttttccct	1020
gagggggaag cctttccccc tgtctccgtc accactctgg gctctcccat gcattcaaac	1080
tga	1083

<210> SEQ ID NO 3
 <211> LENGTH: 954
 <212> TYPE: DNA
 <213> ORGANISM: Homo sapiens
 <220> FEATURE:
 <221> NAME/KEY: misc_feature
 <222> LOCATION: (1)..(954)
 <223> OTHER INFORMATION: Sox2

<400> SEQUENCE: 3

atgtacaaca tgatggagac ggagctgaag ccgccgggccc cgcagcaaac ttcggggggc	60
ggcggcgcca actccaccgc ggcggcgccc ggcggcaacc agaaaaacag cccggaccgc	120
gtcaagcggc ccatgaatgc cttcatggtg tggccccgcg ggcagcggcg caagatggcc	180
caggagaacc ccaagatgca caactcggag atcagcaagc gctcggcgcg cgagtggaaa	240
ctttgtcgg agacggagaa gcggccgttc atcgacgagg ctaagcggct gcgagcgtg	300
cacatgaagg agcaccggga ttataaatac cggccccggc ggaaaaacaa gacgctcatg	360
aagaaggata agtacacgct gcccgcgccc ctgctggccc ccggcggcaa tagcatggcg	420
agcggggctg ggggtggcgc cggcctgggc gcgggctgta accagcgcat ggacagttac	480
gcgcacatga acggtggag caacggcagc tacagcatga tgcaggacca gctgggctac	540
ccgcagcacc cgggcctcaa tgcgcacggc gcagcgaga tgcagcccat gcaccgctac	600
gacgtgagcg cctcgagta caactccatg accagctcgc agacctacat gaacggctcg	660
cccacctaca gcattgctta ctcgcagcag ggcacccctg gcattggtct tggctccatg	720
ggttcggtgg tcaagtccga ggccagctcc agccccctg tggttacctc ttcctcccac	780
tccagggcgc cctgccaggc cggggacctc cgggacatga tcagcatgta tctcccggc	840
gccgaggtgc cggaaccgc gcccccagc agacttcaca tgtcccagca ctaccagagc	900
ggccccgtgc ccggcacggc cattaacggc aactgcccc tctcacacat gtga	954

<210> SEQ ID NO 4
 <211> LENGTH: 630
 <212> TYPE: DNA
 <213> ORGANISM: Homo sapiens
 <220> FEATURE:
 <221> NAME/KEY: misc_feature
 <222> LOCATION: (1)..(630)
 <223> OTHER INFORMATION: Lin28

<400> SEQUENCE: 4

atgggctccg tgtccaacca gcagtttgca ggtggctcgc ccaaggcggc agaagaggcg	60
---	----

-continued

cccgaggagg cgccggagga cgcggcccg gcggcggacg agcctcagct gctgcacggt	120
gcgggcatct gtaagtgtt caacgtgcgc atggggttcg gcttctctgc catgaccgcc	180
cgcgcggggg tcgcgtcga ccccccagtg gatgtctttg tgcaccagag taagctgcac	240
atggaagggg tccggagctt gaaggagggt gaggcagtgg agttcacctt taagaagtca	300
gccaagggtc tggaatccat ccgtgtcacc ggacctggtg gagtattctg tattgggagt	360
gagaggcggc caaaaggaaa gagcatgcag aagcgcagat caaaaggaga caggtgtctac	420
aactgtggag gtctagatca tcattgccaag gaatgcaagc tgccacccca gcccaagaag	480
tgccacttct gccagagcat cagccatatt gtagcctcat gtccgctgaa ggccagcag	540
ggccctagt cagagggaaa gccaacctac ttctgagagg aagaagaaga aatccacagc	600
cctaccctgc tcccggaggc acagaattga	630

<210> SEQ ID NO 5
 <211> LENGTH: 918
 <212> TYPE: DNA
 <213> ORGANISM: Homo sapiens
 <220> FEATURE:
 <221> NAME/KEY: misc_feature
 <222> LOCATION: (1) .. (918)
 <223> OTHER INFORMATION: Nanog

<400> SEQUENCE: 5

atgagtgtgg atccagcttg tccccaaagc ttgccttctt ttgaagcacc cgactgtaaa	60
gaatctttac ctatgcctgt gatttgtggg cctgaagaaa actatccatc cttgcaaatg	120
tcttctgtct agatgcctca caccggagact gtctctcttc tccctctctc catggatctg	180
cttattcagg acagccctga ttcttccacc agtcccaaag gcaaacaacc cacttctgca	240
gagaatagtg tcgcaaaaaa ggaagacaag gtcccagtca agaaacagaa gaccagaaat	300
gtgttctctt ccaccagct gtgtgtactc aatgatagat ttcagagaca gaaatacctc	360
agctccagc agatgcaaga actctccaac atcctgaacc tcagctacaa acaggtgaag	420
acctggttcc agaaccagag aatgaaatct aagaggtggc agaaaaacaa ctggccgaag	480
aatagcaatg gtgtgacgca gaaggcctca gcacctacct accccagcct ctactcttcc	540
taccaccagg gatgcctggt gaacccgact gggaaacctc caatgtggag caaccagacc	600
tggaacaatt caacctggag caaccagacc cagaacatcc agtcctggag caaccactcc	660
tggaacactc agacctggtg caccacaatcc tggaacaatc aggcctggaa cagtcccttc	720
tataactgtg gagaggaatc tctgcagtcc tgcattgcagt tccagccaaa ttctctgcc	780
agtgacttgg aggctgcttt ggaagctgct ggggaaggcc ttaatgtaac acagcagacc	840
actaggtatt ttagtactcc acaaacctat gatatttctc taaactactc catgaacatg	900
caacctgaag acgtgtga	918

<210> SEQ ID NO 6
 <211> LENGTH: 8060
 <212> TYPE: DNA
 <213> ORGANISM: Artificial Sequence
 <220> FEATURE:
 <223> OTHER INFORMATION: Lentivirus harboring Stella
 <220> FEATURE:
 <221> NAME/KEY: misc_feature
 <222> LOCATION: (3604) .. (4083)
 <223> OTHER INFORMATION: Sequence for Stella

<400> SEQUENCE: 6

cggaccgcca ctgccaatta cctgtggttt catctactct aaacctgtga ttctctgaa	60
--	----

-continued

ttattttcat	tttaagaaa	ttgtatttgt	taaataatgta	ctacaaactt	agtagttgga	120
agggctaatt	cactcccaaa	gaagacaaga	tatccttgat	ctgtggatct	accacacaca	180
aggctacttc	cctgattagc	agaactacac	accagggccca	ggggtcagat	atccactgac	240
ctttggatgg	tgctacaagc	tagtaccagt	tgagccagat	aaggtagaag	aggccaataa	300
aggagagaac	accagcttgt	tacacctgt	gagcctgcat	gggatggatg	accgggagag	360
agaagtgtta	gagtggaggt	ttgacagccg	cctagcattt	catcacgtgg	cccagagagct	420
gcatccggag	tacttcaaga	actgctgata	tcgagcttgc	tacaagggac	tttccgctgg	480
ggactttcca	gggaggcgtg	gcctgggagg	gactggggag	tggcgagccc	tcagatcctg	540
catataagca	gctgcttttt	gcctgtactg	ggtctctctg	gttagaccag	atctgagcct	600
gggagctctc	tggctaacta	gggaaccac	tgcttaagcc	tcaataaagc	ttgccttgag	660
tgcttcaagt	agtgtgtgcc	cgtctgttgt	gtgactctgg	taactagaga	tcctcagac	720
ccttttagtc	agtgtggaaa	atctctagca	gtggcgcccg	aacagggact	tgaagcgaa	780
agggaaacca	gaggagctct	ctcgacgcag	gactcggctt	gctgaagcgc	gcacggcaag	840
agggcagggg	cggcgactgg	tgagtacgcc	aaaaattttg	actagcggag	gctagaagga	900
gagagatggg	tgcgagagcg	tcagtattaa	gcgggggaga	attagatcgc	gatgggaaaa	960
aattcggtta	aggccagggg	gaaagaaaaa	atataaatta	aaacatatag	tatgggcaag	1020
cagggagcta	gaacgattcg	cagttaatcc	tggcctgtta	gaaacatcag	aaggctgtag	1080
acaaatactg	ggacagctac	aaccatccct	tcagacagga	tcagaagaac	ttagatcatt	1140
atataataca	gtagcaaccc	tctatttgt	gcatcaaagg	atagagataa	aagacaccaa	1200
ggaagcttta	gacaagatag	aggaagagca	aaacaaaagt	aagaccaccg	cacagcaagc	1260
ggccgctgat	cttcagacct	ggaggaggag	atatgaggga	caattggaga	agtgaattat	1320
ataaatataa	agtagtaaaa	attgaaccat	taggagtagc	accaccaag	gcaaagagaa	1380
gagtggtgca	gagagaaaaa	agagcagtg	gaataggagc	tttgttcctt	gggttcttgg	1440
gagcagcagg	aagcactatg	ggcgacgcgt	caatgacgct	gacggtacag	gccagacaat	1500
tattgtctgg	tatagtgcag	cagcagaaca	atttgcctgag	ggctattgag	gcgcaacagc	1560
atctgttgca	actcacagtc	tggggcatca	agcagctcca	ggcaagaatc	ctggctgtgg	1620
aaagatacct	aaaggatcaa	cagctcctgg	ggatttgggg	ttgctctgga	aaactcattt	1680
gcaccactgc	tgtgccttgg	aatgctagtt	ggagtaataa	atctctggaa	cagatttggga	1740
atcacacgac	ctggatggag	tgggacagag	aaattaacaa	ttacacaagc	ttaatacact	1800
ccttaattga	agaatcgcaa	aaccagcaag	aaaagaatga	acaagaatta	ttggaattag	1860
ataaatgggc	aagtttgtgg	aattggttta	acataacaaa	ttggctgtgg	tataaaaaat	1920
tattcataat	gatagtagga	ggcttggtag	gtttaagaat	agtttttgc	gtactttcta	1980
tagtgaatag	agttaggcag	ggatattcac	cattatcggt	tcagaccacc	ctcccaaccc	2040
cgaggggacc	cgacaggccc	gaaggaatag	aagaagaagg	tggagagaga	gacagagaca	2100
gatccattcg	attagtgaac	ggatctcgac	ggtatcgcca	caaatggcag	tattcatcca	2160
caatttttaa	agaaaggggg	ggattggggg	gtacagtgc	ggggaagaa	tagtagacat	2220
aatagcaaca	gacatacaaa	ctaaagaatt	acaaaaacaa	attacaaaaa	ttcaaaattt	2280
tcgggtttat	tacagggaca	gcagagatcc	actttggtcg	ataagctttg	caaagatgga	2340
taaagtttta	aacagagagg	aatctttgca	gctaattggac	cttctaggtc	tgaaaggag	2400
tgggaattgg	ctccggtgcc	cgtcagtg	ggcagcgac	atcgcccaca	gtccccgaga	2460

-continued

agttgggggg	aggggtcggc	aattgaaccg	gtgcctagag	aaggtggcgc	ggggtaaact	2520
gggaaagtga	tgctcgttac	tggtcccgcc	tttttcccg	gggtggggga	gaaccgtata	2580
taagtgcagt	agtcgccgtg	aacgttcttt	ttcgcaacgg	gtttgccgcc	agaacacagg	2640
taagtgccgt	gtgtggttcc	cgcgggcctg	gcctctttac	gggttatggc	ccttgcggtc	2700
cttgaattac	ttccacctgg	ctgcagtaac	tgattcttga	tcccgagctt	cgggttggaa	2760
gtgggtggga	gagttcgagg	ccttgcgctt	aaggagcccc	ttcgccctcg	gcttgagttg	2820
aggcctggcc	tgggcgctgg	ggccgcgcgg	tgcaaatctg	gtggcacctt	cgcgcctgtc	2880
tcgctgcttt	cgataagtct	ctagccatct	aaaatttttg	atgacctgct	gcgacgcttt	2940
ttttctggca	agatagtctt	gtaaatgcgg	gccaagatct	gcacactggg	atttcggttt	3000
ttggggccgc	gggcggcgac	ggggcccgtg	cgtcccagcg	cacatgttcg	gcgaggcggg	3060
gcctgcgagc	gcggccaccg	agaatcggac	gggggtagtc	tcaagctggc	cggcctgctc	3120
tggtgctcgg	cctcgcgcgg	cgtgtatcgc	ccccgccctg	ggcggaagg	ctggcccggg	3180
cggcaccagt	tgctgtagcg	gaaagatggc	cgttcccggg	ccctgctgca	gggagctcaa	3240
aatggaggac	gcggcgctcg	ggagagcggg	cgggtgagtc	acccacacaa	aggaaaaggg	3300
cctttccgct	ctcagccgct	gcttcagtgt	actccacgga	gtaccgggcg	ccgtccaggc	3360
acctcgatta	gttctcgagc	ttttggagta	cgtcgtcttt	aggttggggg	gaggggtttt	3420
atgcgatgga	gtttccccc	actgagtggt	tggagactga	agttaggcca	gcttggcact	3480
tgatgtaatt	ctccttgga	tttgcccttt	ttgagtttgg	atcttggttc	attctcaagc	3540
ctcagacagt	ggttcaaagt	ttttttcttc	catttcaggt	gtcgtgagga	attcgcgata	3600
gccatggacc	catcacagtt	taatccaacc	tacatcccag	ggtctccaca	aatgctcacc	3660
gaagaaaatt	cccgggacga	ttcaggggcc	tctcaaactc	cctccgagac	gttgataaag	3720
aaccttagta	acttgactat	caacgctagt	agcgaatctg	tttcccctct	atcggaagct	3780
ttactccgct	gagagtctgt	aggagcagca	gtcctcaggg	aaatcgaaga	tgagtggctt	3840
tacagcagga	gaggagtaag	aacattgctg	tctgtgcaga	gagaaaagat	ggcaagattg	3900
agatacatgt	tactcggcgg	agttcgtacg	catgaaagaa	gaccaacaaa	caaggagcct	3960
aaggaggtta	agaaggaaac	aagaccattc	aaatgtccct	gcagtttctg	cgtgtctaata	4020
ggatgggata	cttctgagaa	tgctagaata	gggaatcaag	acaccaagcc	acttcagcca	4080
taatagggtt	aaacatcgat	ggcctcgaga	aagcggccgc	ccccacgcgt	aaactagttc	4140
gaaggatccg	catgcatact	gggcggccaa	ttccgcccct	ctccctcccc	ccccccctaac	4200
gttactggcc	gaagccgctt	ggaataaggc	cgggtgtcgt	ttgtctatat	gtgattttcc	4260
accataattg	cgtcttttgg	caatgtgagg	gcccggaaac	ctggccctgt	cttcttgacg	4320
agcattccta	gggtctcttc	ccctctcgcc	aaaggaatgc	aaggctctgt	gaatgtcgtg	4380
aaggaagcag	ttcctctgga	agcttcttga	agacaaacaa	cgtctgtagc	gaccctttgc	4440
aggcagcgga	acccccacc	tgccgacagg	tgccctctcg	gcaaaaagcc	acgtgtataa	4500
gatacacctg	caaaggcggc	acaaccccag	tgccacgttg	tgagttggat	agttgtggaa	4560
agagtcacaa	ggctctcttc	aagcgtattc	aacaaggggc	tgaaggatgc	ccagaaggta	4620
ccccattgta	tgggatctga	tctggggcct	cgggtgcacat	gctttacatg	tgtttagtcg	4680
aggttaaaaa	aacgtctagg	ccccccgaac	cacggggacg	tggttttctc	ttgaaaaaca	4740
cgatgataag	cttgccacaa	cccacaagga	gacgaccttc	catgaccgag	tacaagccca	4800
cgggtgcgct	cgccaccgcg	gacgacgtcc	ccggggcgtg	acgcaccctc	gccgcgcgct	4860

-continued

tcgccgacta	ccccgccacg	cgccacaccg	tcgacccgga	ccgccacatc	gagcgggtca	4920
ccgagctgca	agaactcttc	ctcacgcgcg	tcgggtctga	catcggcaag	gtgtgggtcg	4980
cggacgacgg	cgcgcgggtg	gcggtctgga	ccacgccgga	gagcgtcgaa	gcgggggcgg	5040
tgttcgccga	gatcggcccc	cgcatggccc	agttgagcgg	ttcccggctg	gccgcgcagc	5100
aacagatgga	aggcctctcg	gcgcgcgacc	ggcccaagga	gcccgcgtgg	ttcctggcca	5160
ccgtcggcgt	ctgccccgac	caccagggga	agggctctggg	cagcgcctgc	gtgtcccccg	5220
gagtggaggc	ggccgagcgc	gccgggggtgc	ccgccttcct	ggagacctcc	gcgccccgca	5280
acctccccct	ctacgagcgg	ctcggtctca	ccgtcacccg	cgacgtcgag	tgcccgaagg	5340
accgcgcgac	ctggtgcatg	acccgcaagc	ccggtgcctg	ataataggcg	gccgctcgag	5400
acctagaaaa	acatggagca	atcacaagta	gcaatacagc	agctaccaat	gctgattgtg	5460
cctggctaga	agcacaagag	gaggaggagg	tgggttttcc	agtcacacct	caggtacctt	5520
taagaccaat	gacttacaag	gcagctgtag	atcttagcca	ctttttaaaa	gaaaaggggg	5580
gactggaagg	gctaattcac	tcccaacgaa	gacaagatct	gctttttgct	tgtactgggt	5640
ctctctggtt	agaccagatc	tgagcctggg	agctctctcg	ctaactaggg	aaccactgac	5700
ttaagcctca	ataaagcttg	ccttgagtgc	ttcaagtagt	gtgtgcccg	ctgttgtgtg	5760
actctggtaa	ctagagatcc	ctcagaccct	tttagtcagt	gtggaaaatc	tctagcagta	5820
gtagttcatg	tcattcttatt	attcagattt	tataacttgc	aaagaaatga	atatcagaga	5880
gtgagaggcc	ttgacattat	aatagattta	gcagggaattg	aactaggagt	ggagcacaca	5940
ggcaaagttc	tagagctcgc	tgatcagcct	cgactgtgcc	ttctagttag	cagccatctg	6000
ttgtttgccc	ctcccccg	ccttccttga	ccctggaagg	tgccactccc	actgtccttt	6060
cctaataaaa	tgaggaaatt	gcacgcgatt	gtctgagtag	gtgtcattct	attctggggg	6120
gtggggtggg	gcaggacagc	aagggggagg	attgggaaga	caatagcagg	catgctgggg	6180
atgcggtggg	ctctatggct	tctgagggcg	aaagaaccag	ctgggggcgc	gcccctcgag	6240
gccgccatgg	tcatagctgt	ttgacgtcag	gtggcacttt	tcggggaaat	gtgcgcggaa	6300
ccccatttgg	tttatttttc	taaatacatt	caaatatgta	tccgctcatg	agacaataac	6360
cctgataaat	gcttcaataa	tattgaaaaa	ggaagagtat	gagtattcaa	catttccgtg	6420
tcgcccttat	tccctttttt	gcggcatttt	gccttcctgt	ttttgctcac	ccagaaaagc	6480
tgggtgaaag	aaaagatgct	gaagatcagt	tgggtgcacg	agtggttac	atcgaactgg	6540
atctcaacag	cggtaagatc	cttgagagtt	ttcgccccga	agaacgtttt	ccaatgatga	6600
gcacttttaa	agttctgcta	tgtggcgcg	tattatcccg	tattgacgcc	gggcaagagc	6660
aactcggtcg	ccgcatacac	tattctcaga	atgacttgg	tgagtactca	ccagtcacag	6720
aaaagcatct	tacggatggc	atgacagtaa	gagaattatg	cagtgtctgc	ataaccatga	6780
gtgataaac	tgccggccaac	ttacttctga	caacgatcgg	aggaccgaag	gagctaaccg	6840
cttttttgca	caacatgggg	gatcatgtaa	ctcgcttga	tcgttgggaa	ccggagctga	6900
atgaagccat	accaaagcgc	gagcgtgaca	ccacgatgcc	tgtagcaatg	gcaacaacgt	6960
tcgcgaaact	attaactggc	gaactactta	ctctagcttc	ccggcaacaa	ttaatagact	7020
ggatggaggc	ggataaagtt	gcaggaccac	ttctgcgctc	ggcccttcgg	gctggctggt	7080
ttattgctga	taaatctgga	gccggtgagc	gtgggtctcg	cggtatcatt	gcagcactgg	7140
ggccagatgg	taagccctcc	cgtatcgtag	ttatctacac	gacggggagt	caggcaacta	7200
tggatgaacg	aaatagacag	atcgctgaga	taggtgcctc	actgattaag	cattggtaac	7260

-continued

tgtcagacca agtttactca tataacttt agattgattt aaaacttcat ttttaattta	7320
aaaggatcta ggtgaagatc ctttttgata atctcatgac caaaatccct taacgtgagt	7380
tttcgttcca ctgagcgtca gaccccgtag aaaagatcaa aggatcttct tgagatcctt	7440
ttttctgcg cgtaatctgc tgcttgcaaa caaaaaaacc accgctacca gcggtgggtt	7500
gtttgccgga tcaagageta ccaactcttt ttccgaaggt aactggcttc agcagagcgc	7560
agataccaaa tactgtcctt ctagtgtagc cgtagttagg ccaccacttc aagaactctg	7620
tagcacccgc tacatacctc gctctgctaa tctgtttacc agtggctgct gccagtggcg	7680
ataagtcgtg tcttaccggg ttggactcaa gacgatagtt accggataag gcgcagcggg	7740
cgggctgaac ggggggttcg tgcacacagc ccagcttgga gcgaacgacc tacaccgaac	7800
tgagatacct acagcgtgag cattgagaaa gcgccacgct tcccgaaggg agaaaggcgg	7860
acaggtatcc ggtaagcggc agggctcgaa caggagagcg caccagggag cttccagggg	7920
gaaacgcctg gtatctttat agtctgtcgc ggtttcgcca cctctgactt gagegtcgat	7980
ttttgtgatg ctcgtcaggg gggcggagcc tatggaaaaa cgccagcaac gcggcctttt	8040
tacggttcct ggccttttgc	8060

<210> SEQ ID NO 7
 <211> LENGTH: 19
 <212> TYPE: DNA
 <213> ORGANISM: Artificial Sequence
 <220> FEATURE:
 <223> OTHER INFORMATION: Synthetic oligonucleotide

<400> SEQUENCE: 7

cagtgcccga aaccacac	19
---------------------	----

<210> SEQ ID NO 8
 <211> LENGTH: 24
 <212> TYPE: DNA
 <213> ORGANISM: Artificial Sequence
 <220> FEATURE:
 <223> OTHER INFORMATION: Synthetic oligonucleotide

<400> SEQUENCE: 8

agaggaactg cttccttcac gaca	24
----------------------------	----

<210> SEQ ID NO 9
 <211> LENGTH: 20
 <212> TYPE: DNA
 <213> ORGANISM: Artificial Sequence
 <220> FEATURE:
 <223> OTHER INFORMATION: Synthetic oligonucleotide

<400> SEQUENCE: 9

cagaaggcct cagcacctac	20
-----------------------	----

<210> SEQ ID NO 10
 <211> LENGTH: 20
 <212> TYPE: DNA
 <213> ORGANISM: Artificial
 <220> FEATURE:
 <223> OTHER INFORMATION: Synthetic oligonucleotide

<400> SEQUENCE: 10

tacctcttcc tccactcca	20
----------------------	----

<210> SEQ ID NO 11
 <211> LENGTH: 20
 <212> TYPE: DNA

-continued

<213> ORGANISM: Artificial Sequence
 <220> FEATURE:
 <223> OTHER INFORMATION: Synthetic oligonucleotide

<400> SEQUENCE: 11

aagcgcatat caaaaggaga

20

<210> SEQ ID NO 12
 <211> LENGTH: 20
 <212> TYPE: DNA
 <213> ORGANISM: Artificial Sequence
 <220> FEATURE:
 <223> OTHER INFORMATION: Synthetic oligonucleotide

<400> SEQUENCE: 12

agtttgtgcc aggggtttttg

20

<210> SEQ ID NO 13
 <211> LENGTH: 20
 <212> TYPE: DNA
 <213> ORGANISM: Artificial Sequence
 <220> FEATURE:
 <223> OTHER INFORMATION: Synthetic oligonucleotide

<400> SEQUENCE: 13

acttcacctt ccctccaacc

20

We claim:

1. A composition comprising recombinant nucleic acid encoding potency-determining factors SOX2, OCT-4, NANOG, and LIN28, the factor-encoding nucleic acid being operably linked to at least one heterologous promoter, wherein the composition induces reprogramming when introduced into a mammalian cell.

2. A composition of claim 1, wherein a single molecule comprises the nucleic acid encoding the potency-determining factors.

3. A composition of claim 1, wherein a plurality of molecules comprise the nucleic acid encoding the potency-determining factors.

4. A composition of claim 1, wherein the promoter does not promote transcription in reprogrammed mammalian cell.

5. A composition of claim 1, further comprising a selectable marker.

6. A composition of claim 5, wherein the marker is a gene that encodes a protein selected from the group consisting of Green Fluorescent Protein, Enhanced Green Fluorescent Protein, and luciferase.

7. A composition of claim 5, further comprising a promoter operably linked to the marker, the promoter being selectively active in the mammalian cell after being reprogrammed to pluripotency.

8. A composition of claim 5, wherein the marker is flanked by removal elements.

9. A composition of claim 8, wherein the elements are Cre recombinase recognition elements.

10. A composition of claim 1, wherein the recombinant nucleic acid does not integrate into the genome of the mammalian cell when introduced to the cell.

11. A composition of claim 1, wherein the recombinant nucleic acid comprises a retroviral vector.

12. A composition of claim 11, wherein the retroviral vector is a lentiviral vector.

13. A composition of claim 1, wherein the nucleic acid is contained in virions.

14. A transgenic mammalian euploid cell comprising a recombinant genetic construct encoding potency-determining factors SOX2, OCT-4, NANOG, and LIN28 that induces reprogramming of the mammalian cell.

15. A kit for cellular reprogramming, the kit comprising: nucleic acid encoding SOX2; nucleic acid encoding OCT-4; nucleic acid encoding NANOG; nucleic acid encoding LIN28 and a heterologous promoter operably linked to at least one of the nucleic acid encoding SOX2, nucleic acid encoding OCT-4, nucleic acid encoding NANOG, and nucleic acid encoding LIN28.

16. The kit of claim 15, wherein at least one of the nucleic acid encoding SOX2, nucleic acid encoding OCT-4, nucleic acid encoding NANOG, and nucleic acid encoding LIN28 are on a genetic construct.

* * * * *