



US 20180127784A1

(19) **United States**

(12) **Patent Application Publication**
ALEXANDER et al.

(10) **Pub. No.: US 2018/0127784 A1**

(43) **Pub. Date: May 10, 2018**

(54) **SYNTHETIC YEAST CELLS AND METHODS
OF MAKING AND USING THE SAME**

Publication Classification

(71) Applicant: **Wisconsin Alumni Research
Foundation, Madison, WI (US)**

(51) **Int. Cl.**
C12N 15/90 (2006.01)
C12N 15/81 (2006.01)
C12N 15/65 (2006.01)
C12N 1/18 (2006.01)

(72) Inventors: **William Gerald ALEXANDER,**
Madison, WI (US); **David Peris**
NAVARRO, Madison, WI (US);
Christopher Todd HITTINGER,
Madison, WI (US)

(52) **U.S. Cl.**
CPC **C12N 15/905** (2013.01); **C12N 15/81**
(2013.01); **C12N 2840/002** (2013.01); **C12N**
1/18 (2013.01); **C12N 2800/80** (2013.01);
C12N 15/65 (2013.01)

(73) Assignee: **Wisconsin Alumni Research
Foundation, Madison, WI (US)**

(21) Appl. No.: **15/805,950**

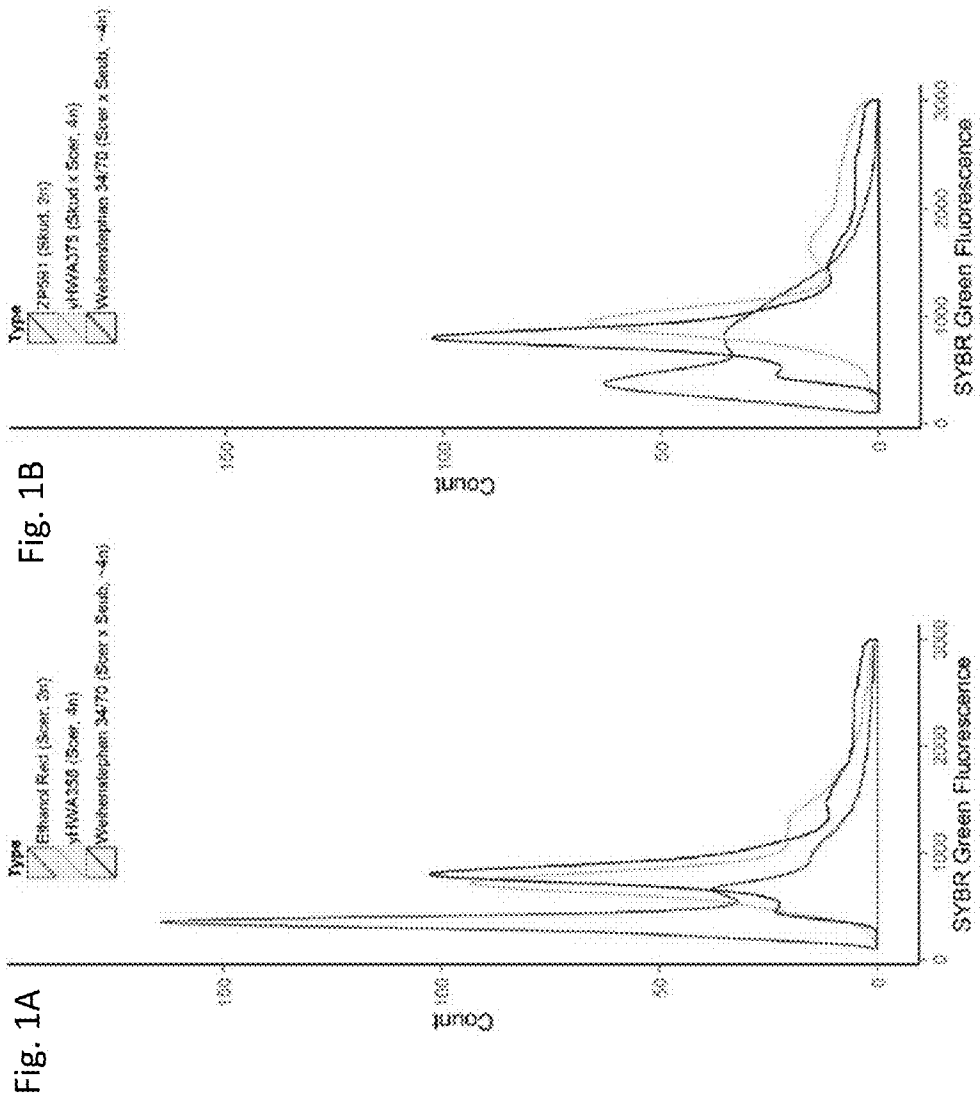
(57) **ABSTRACT**

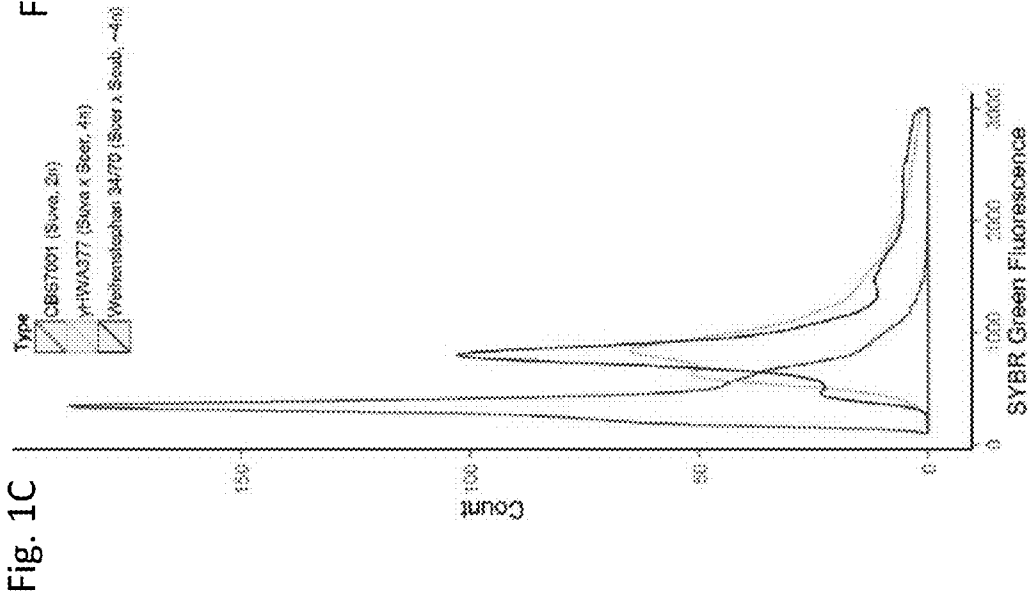
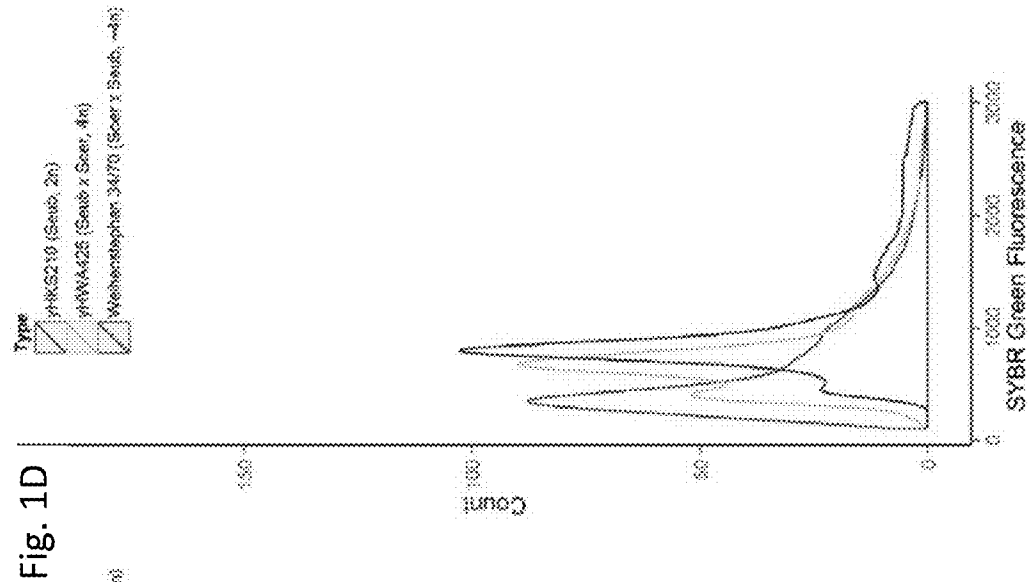
(22) Filed: **Nov. 7, 2017**

Related U.S. Application Data

(60) Provisional application No. 62/418,444, filed on Nov.
7, 2016, provisional application No. 62/524,700, filed
on Jun. 26, 2017.

Methods of making synthetic yeast cells by mating together
two diploid (or higher ploidy) yeast species or hybrids to
generate multi-ploid yeast hybrids are provided herein. The
synthetic yeast cells made by this process and kits for
performing the process are also provided.





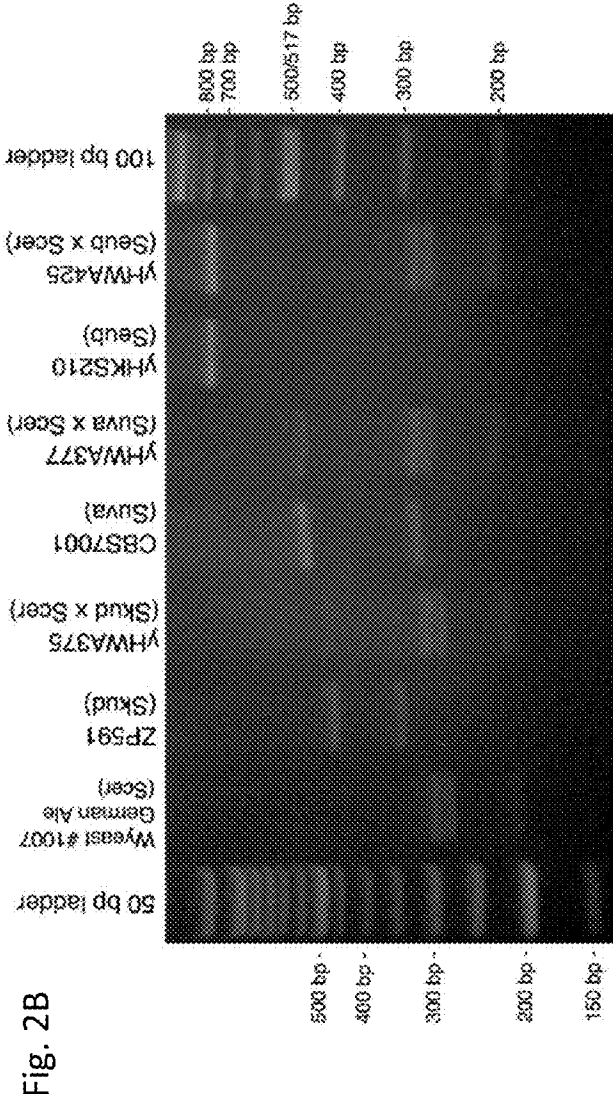
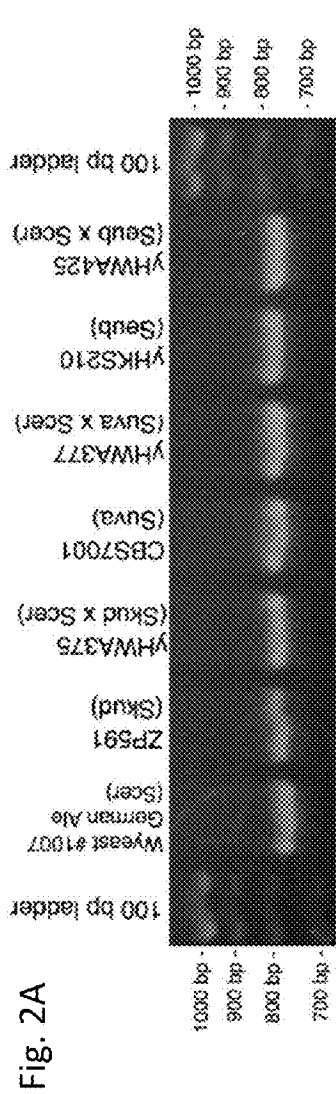


Figure 3

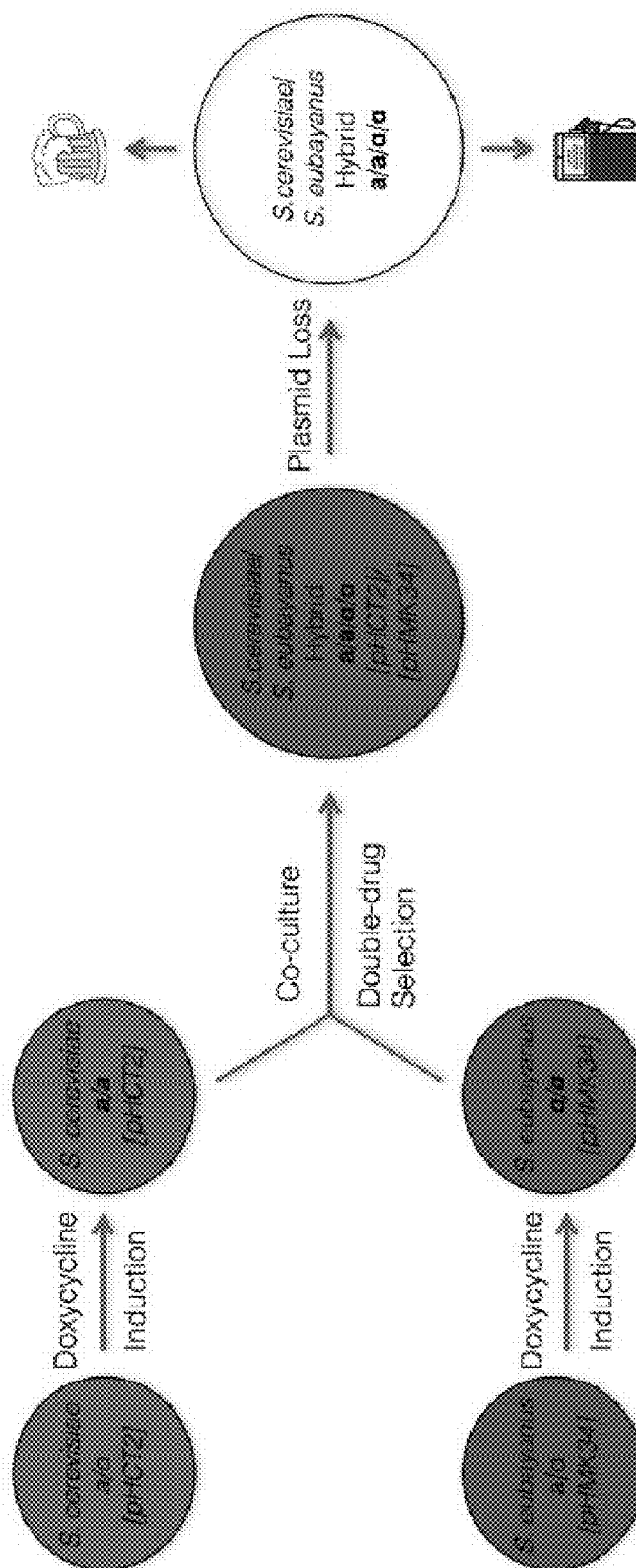


Figure 4A

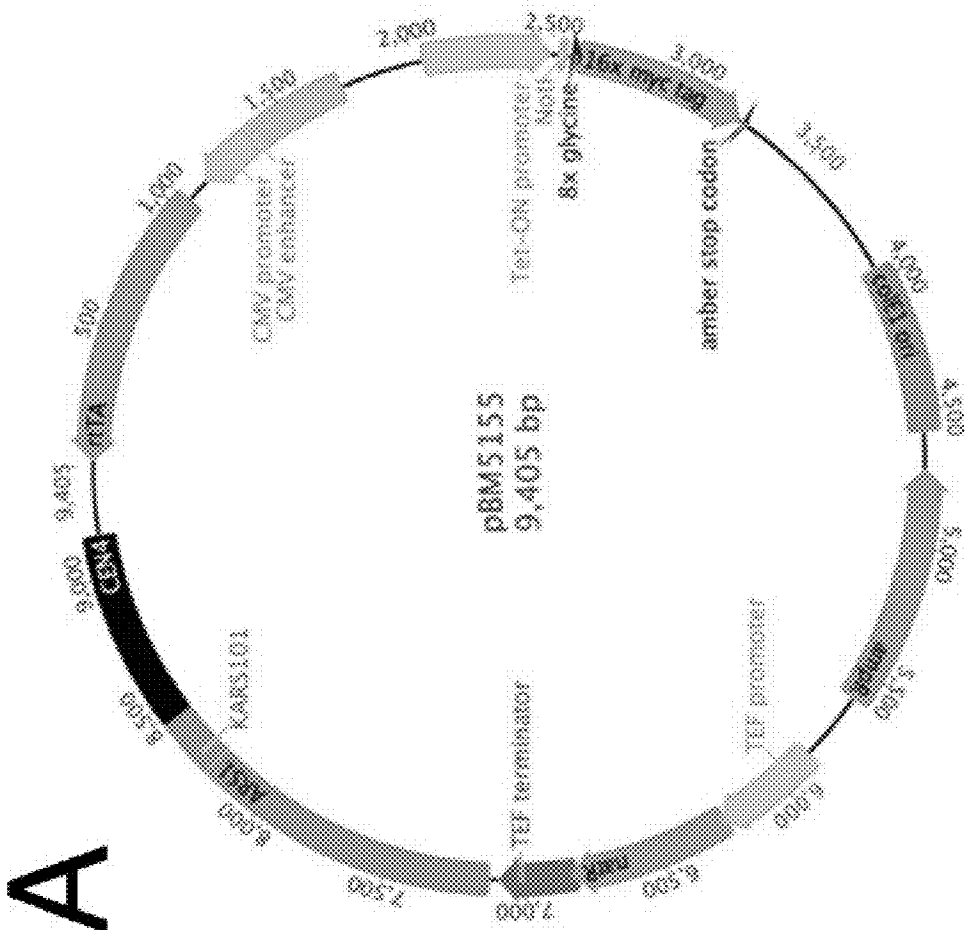


Figure 4B

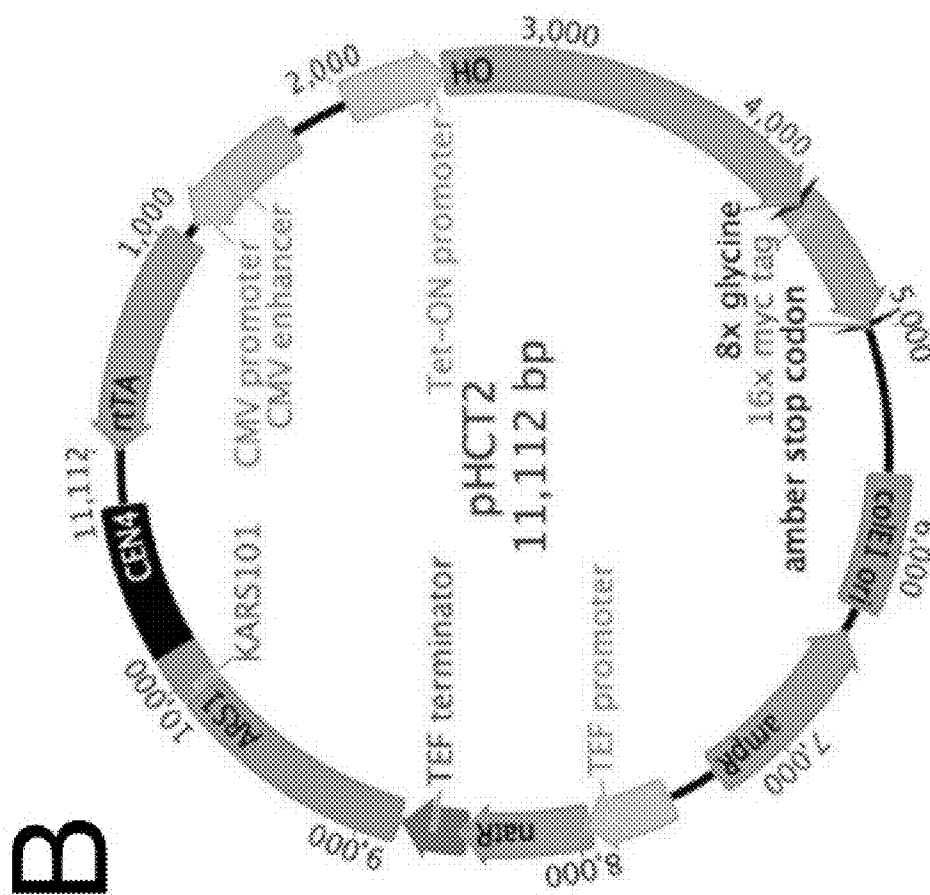


Figure 4C

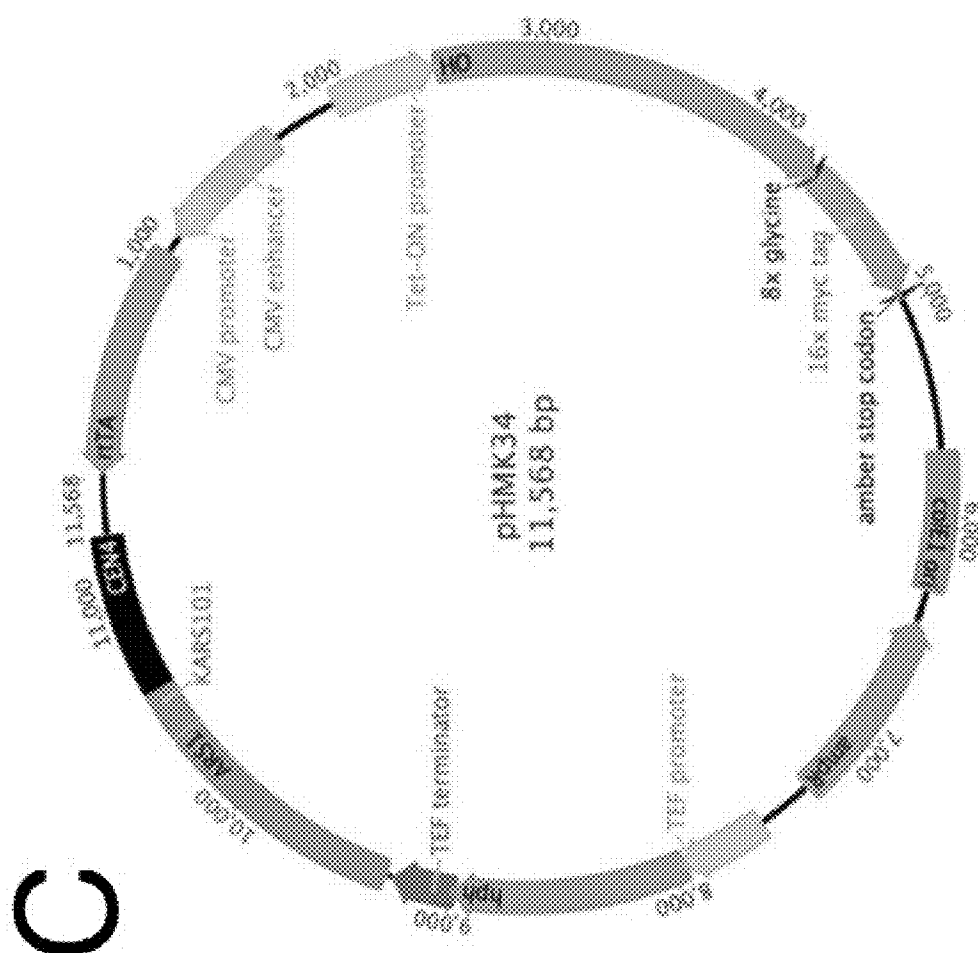


Figure 5

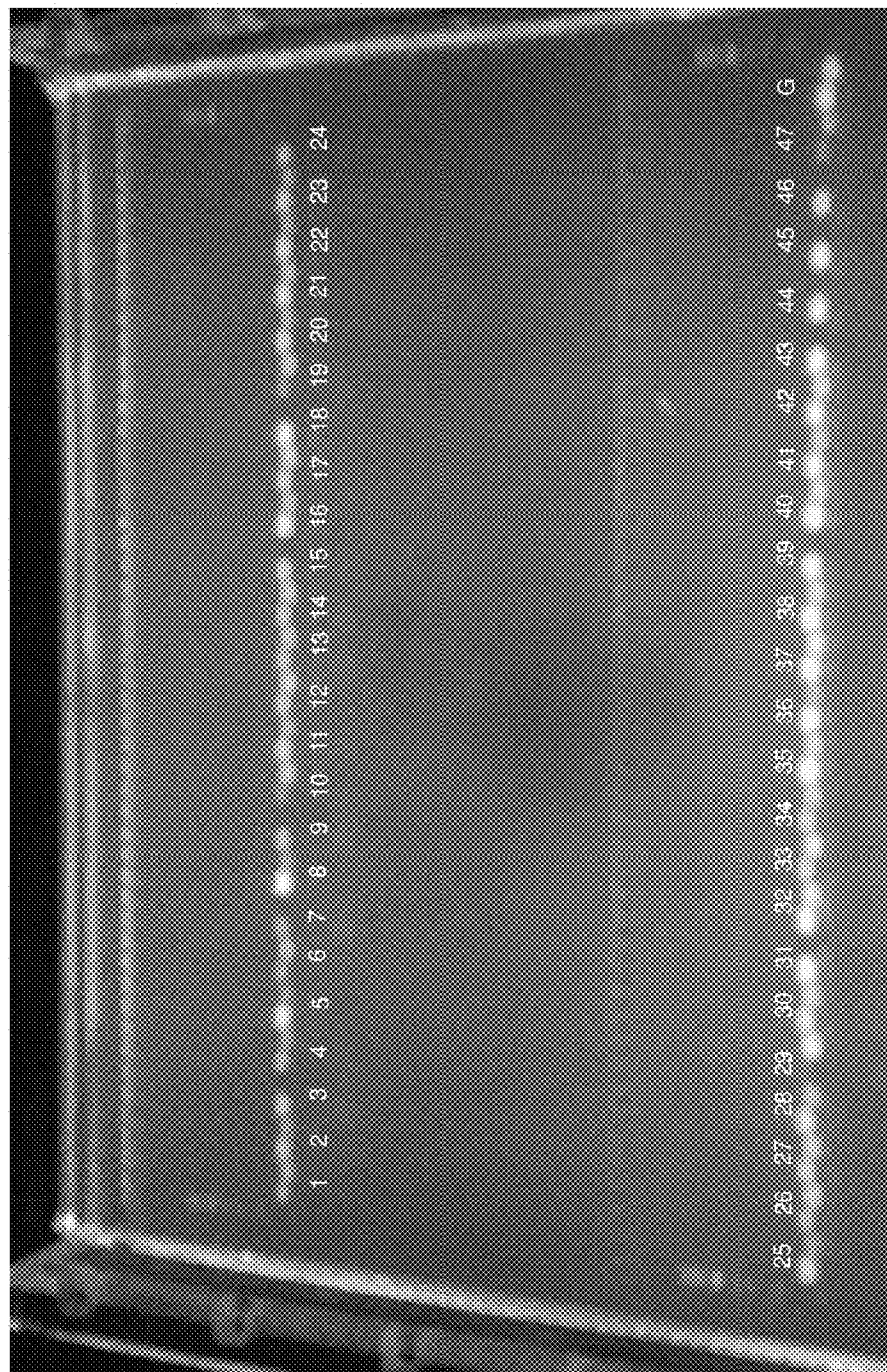


Figure 6

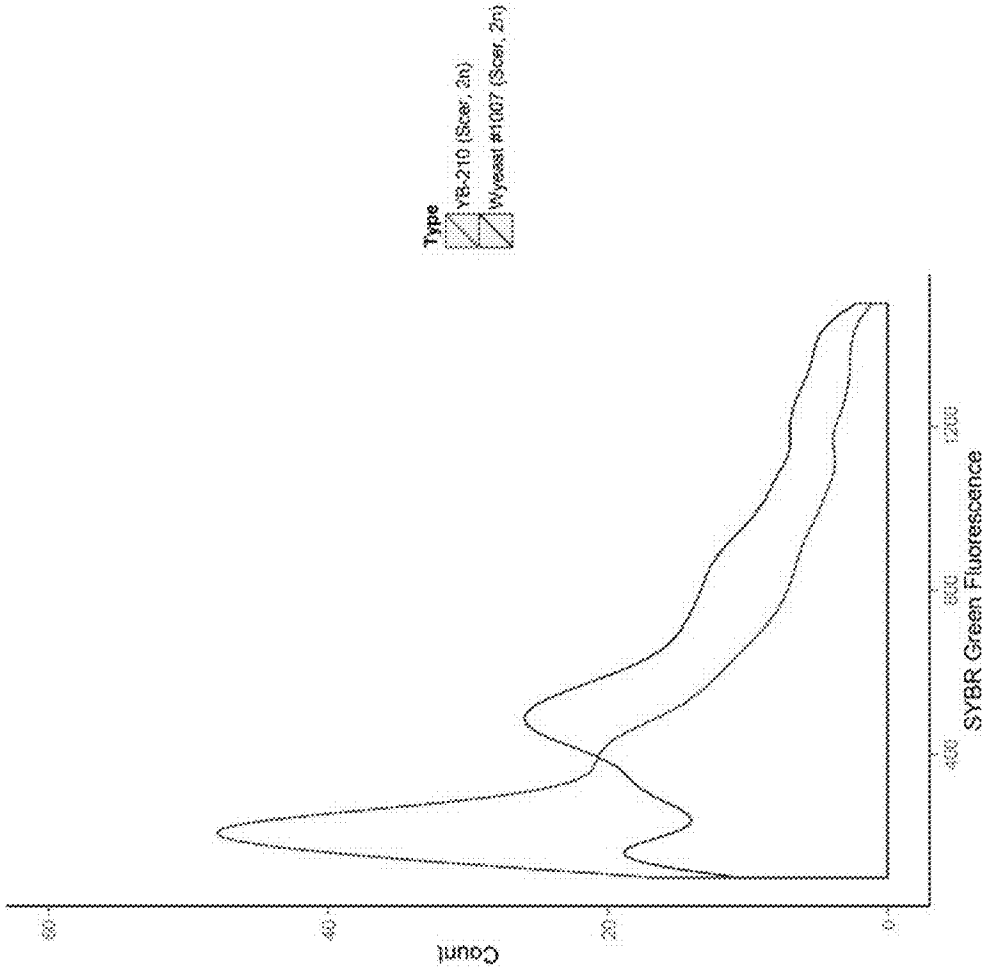


Figure 7

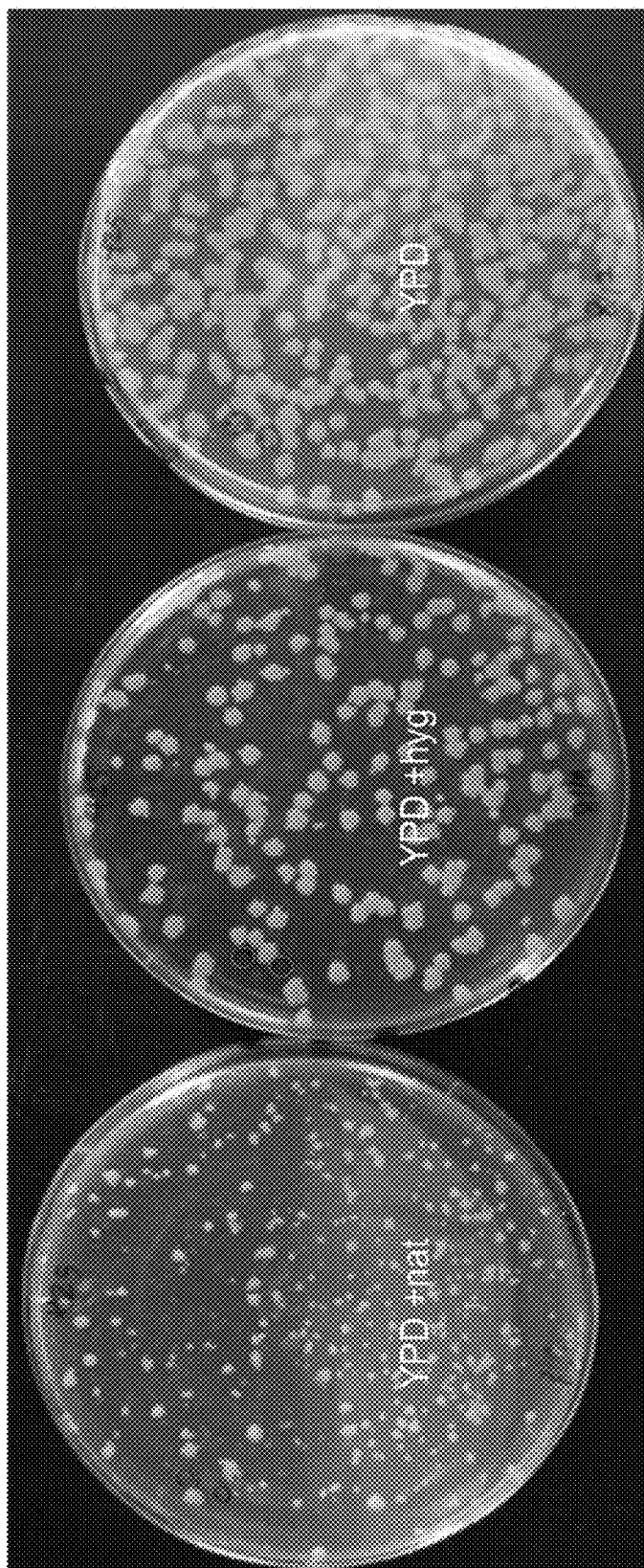


Figure 8

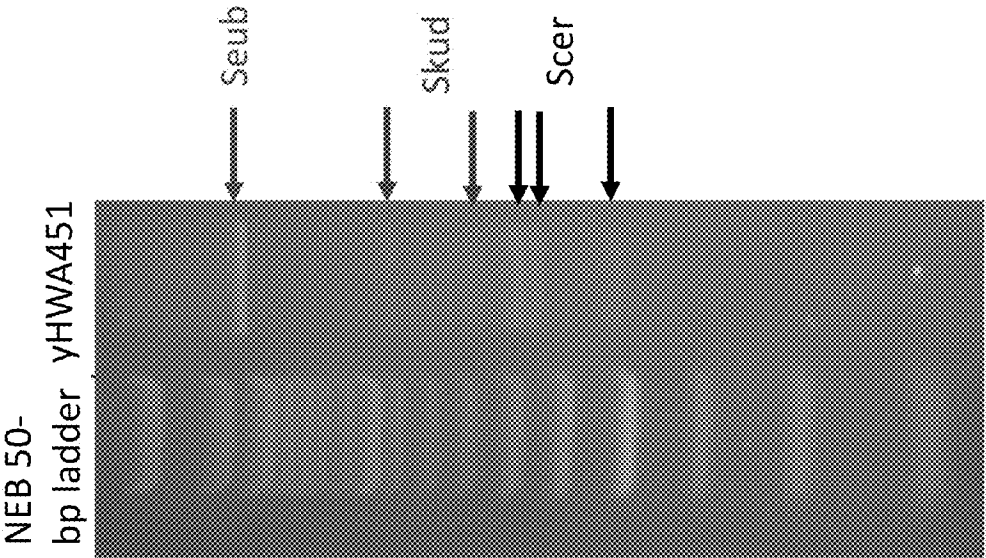


Figure 9

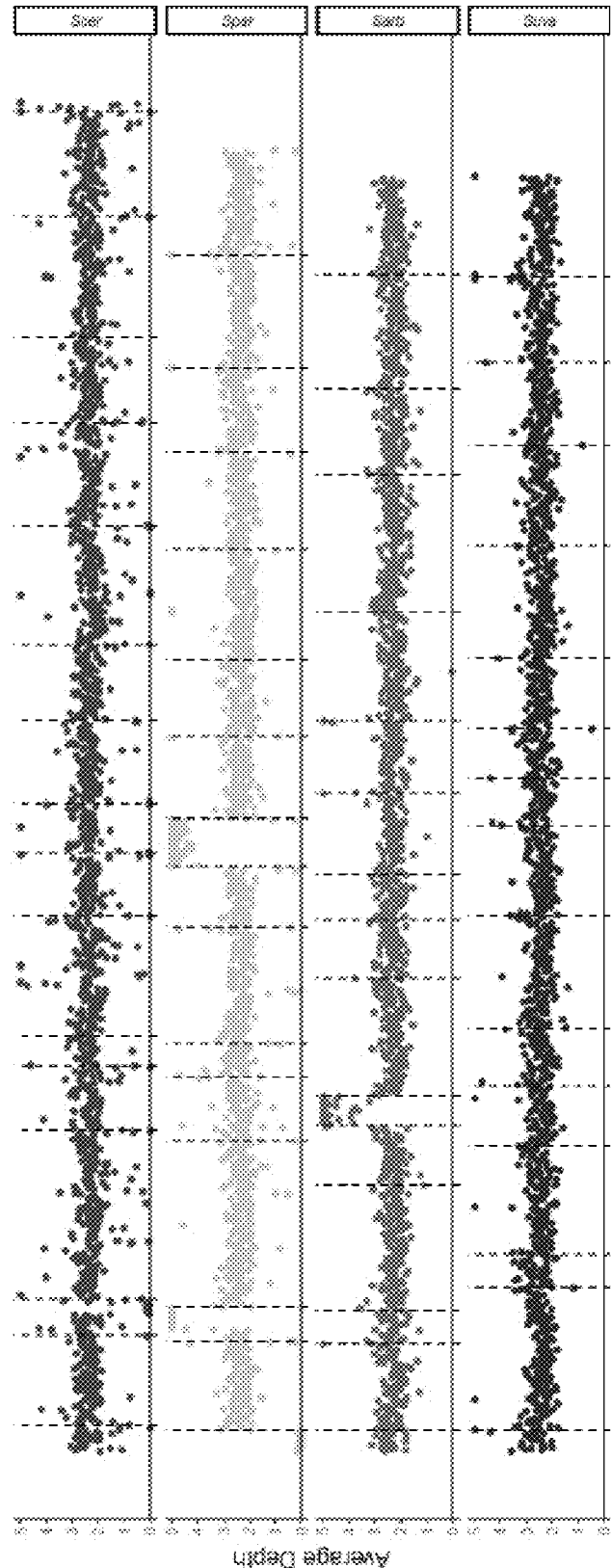


Figure 10

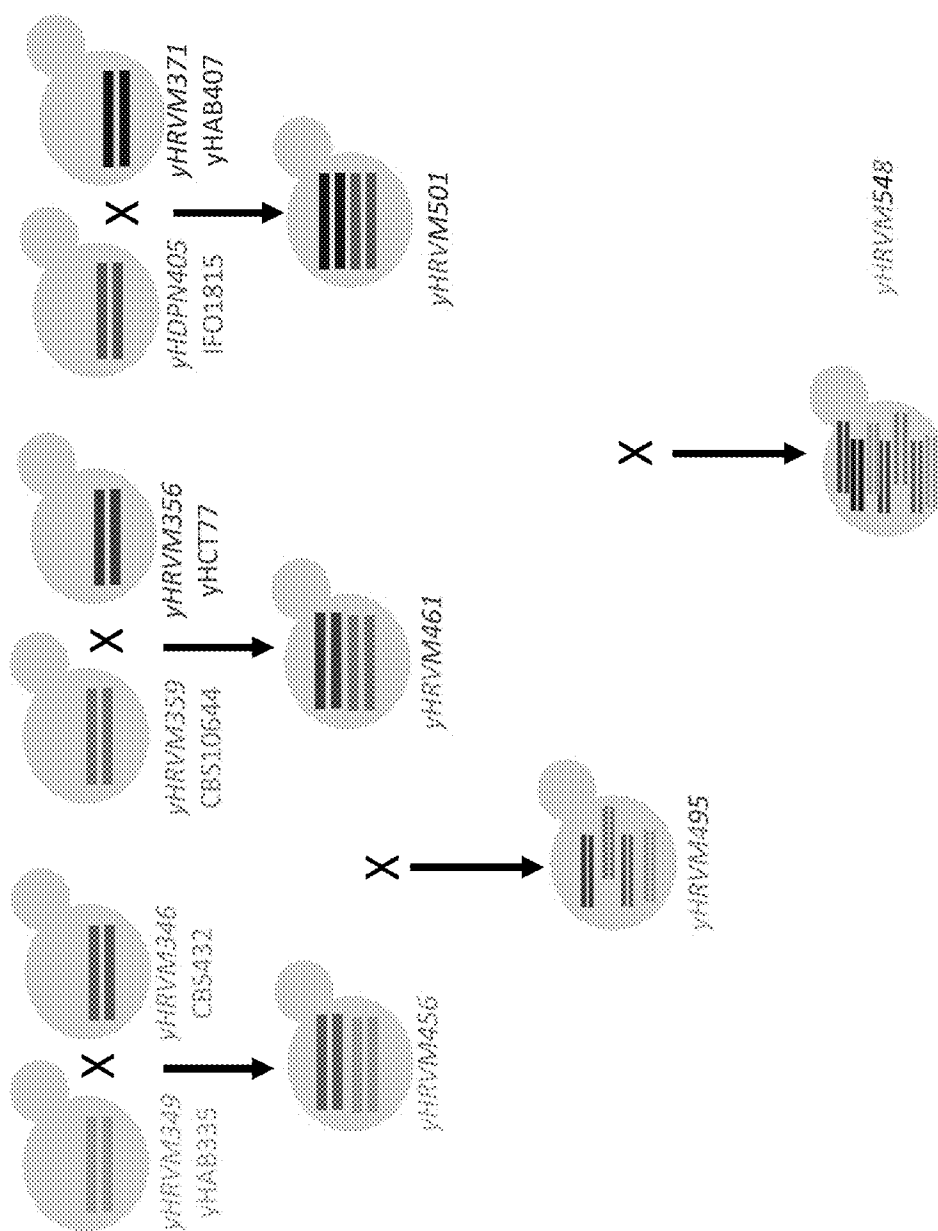


Figure 11B

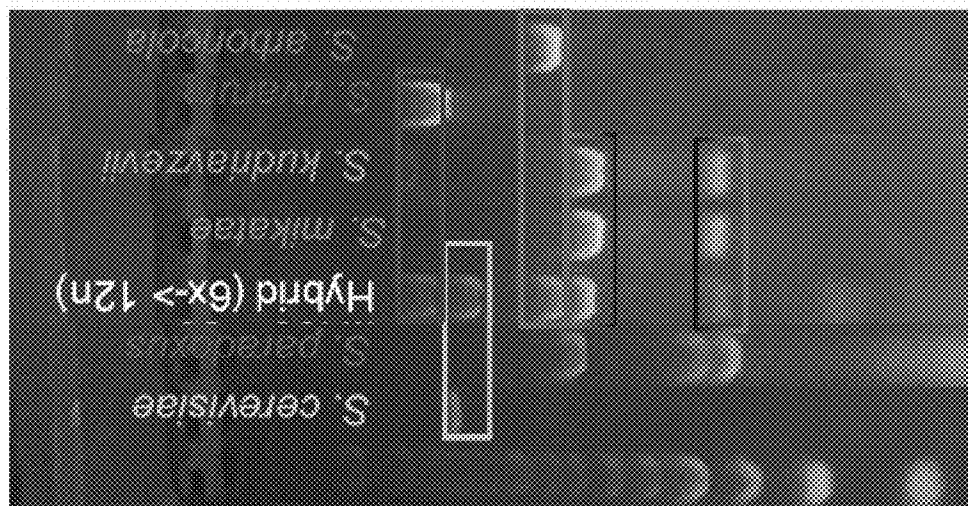


Figure 11A

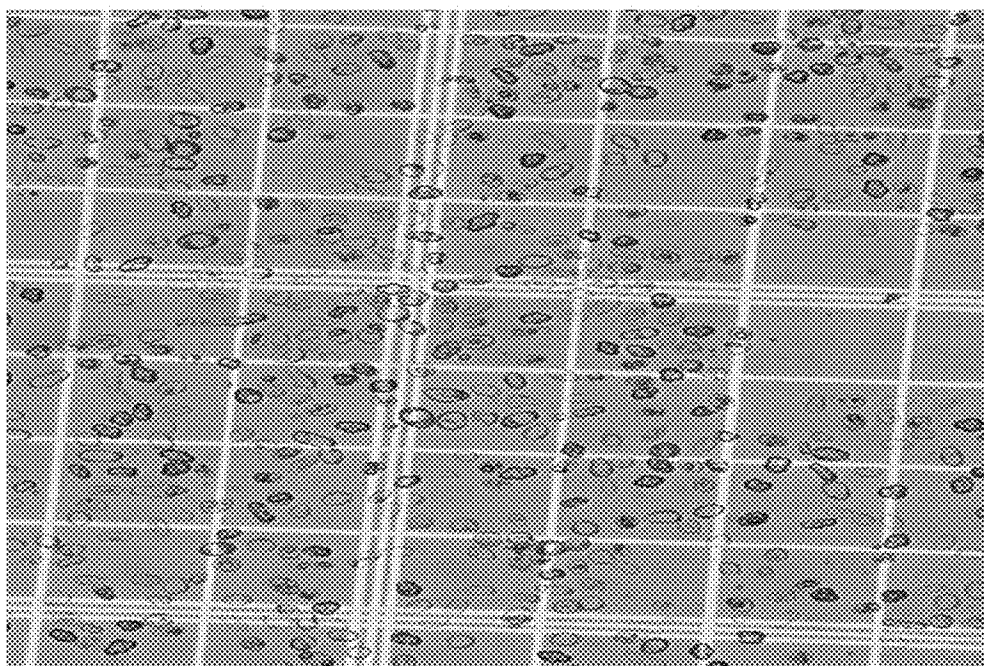
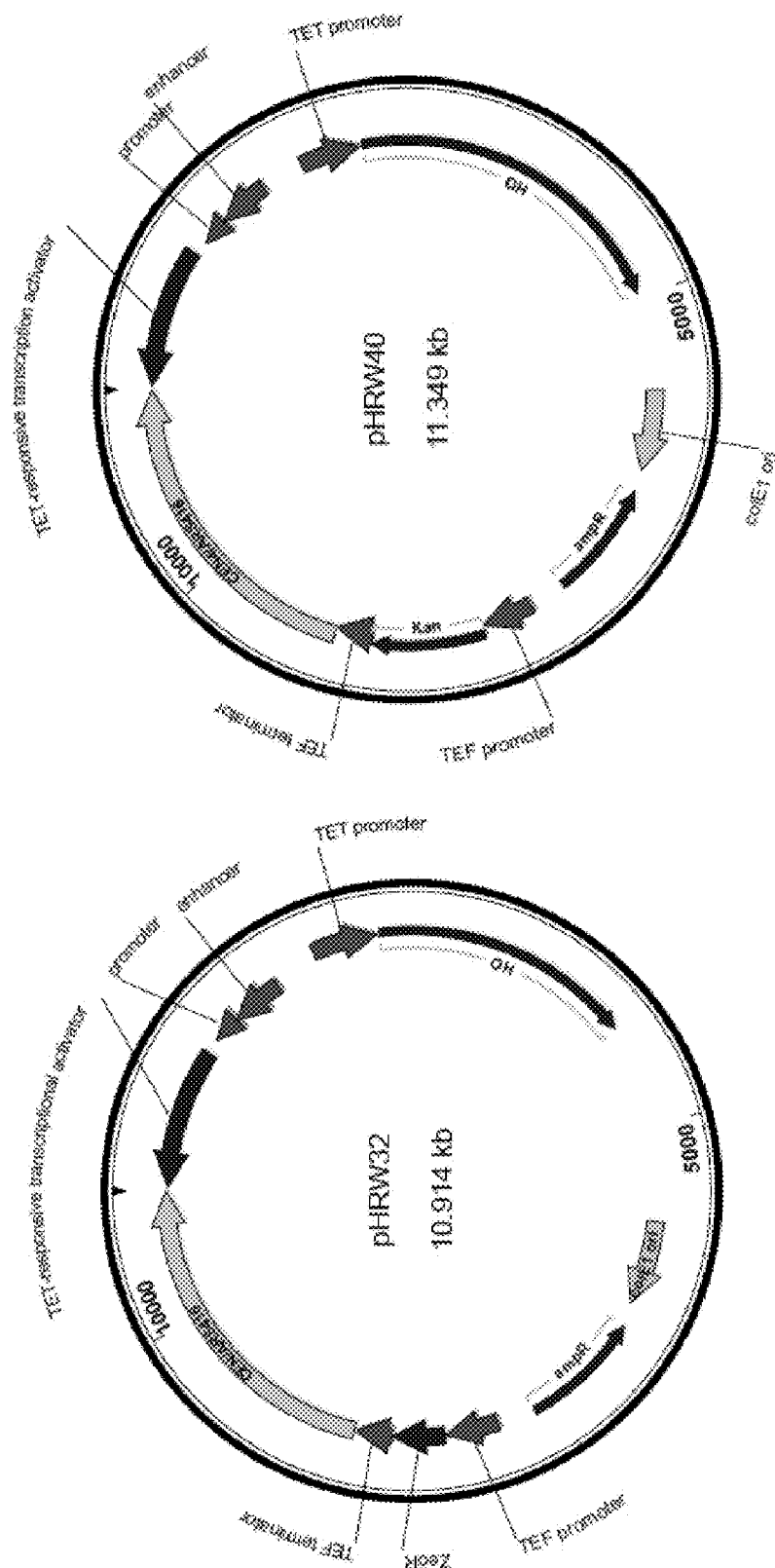


Figure 12



SYNTHETIC YEAST CELLS AND METHODS OF MAKING AND USING THE SAME

CROSS-REFERENCE TO RELATED APPLICATIONS

[0001] This patent application claims the benefit of priority of U.S. Provisional Patent Application No. 62/418,444, filed Nov. 7, 2016 and United States Provisional Patent Application No. 62/524,700, filed Jun. 26, 2017, both of which are incorporated herein by reference in their entireties.

STATEMENT REGARDING FEDERALLY SPONSORED RESEARCH

[0002] This invention was made with United States government support under grant number DE-FC02-07ER64494 awarded by the US Department of Energy and 1253634 awarded by the National Science Foundation. The government has certain rights in this invention.

SEQUENCE LISTING

[0003] This application is being filed electronically via EFS-Web and includes an electronically submitted Sequence Listing in .txt format. The .txt file contains a sequence listing entitled "2017-11-07 5671-00073_ST25.txt" created on Nov. 7, 2017 and is 39,919 bytes in size. The Sequence Listing contained in this .txt file is part of the specification and is hereby incorporated by reference herein in its entirety.

INTRODUCTION

[0004] Yeasts are critical biocatalysts commonly used in many types of commercial fermentations. One potential way of developing new yeast biocatalysts takes advantage of the natural mechanism of reproduction exhibited by many yeast species. For example, numerous yeast species are able to reproduce sexually, wherein meiosis serves to both increase genetic diversity and to repair genetic material. As with other eukaryotes, yeast meiosis generally initiates in diploid cells (John, 1990). Regulation of this process involves specialized genetic loci called the mating-type (MAT) loci. Among yeast species, *Saccharomyces* yeast species, for example, possess two different mating type loci, MATa and MATα, which each may contain two different genes. These mating-type genes encode transcription factors that regulate the expression of meiosis-specific genes, as well as other genes that function in self-recognition, pheromone production, and non-homologous end joining.

[0005] In addition to performing sexual reproduction among members of the same species ("intraspecies sexual reproduction"), *Saccharomyces* yeasts may also perform sexual reproduction among members of different species ("interspecies sexual reproduction"). All seven species of *Saccharomyces* yeasts possess the same mating-type locus organization and a predominantly diploid or diploic life-style. Only limited pre-zygotic speciation barriers exist between *Saccharomyces* species, making hybridization possible between different *Saccharomyces* yeast species ("interspecies hybrids").

[0006] Interestingly, interspecies yeast hybrids produce many commercially important fermentation products. For example, *Saccharomyces cerevisiae*×*Saccharomyces eubayanus* hybrids are used to produce lager beer, the most common fermented beverage on the planet (Conan, 1975;

Libkind et al., 2011). Two major lineages are used in lager production (Dunn and Sherlock, 2008; Nakao et al., 2009; Walther et al., 2014), and recent evidence indicates that these two lineages arose from independent hybridization events, suggesting that genetic diversity from the parental populations may be one contributor to the phenotypic differences seen in modern industrial strains (Baker et al., 2015). Many other fermented beverages also make use of *Saccharomyces* hybrids: *S. cerevisiae*×*Saccharomyces uvarum* hybrids are used in production of some ciders and cold-fermented wines (Le Jeune et al., 2007; Masneuf et al., 1998; Perez-Través et al., 2014b), while many Belgian ale and some European wine yeasts are *S. cerevisiae*×*Saccharomyces kudriavzevii* hybrids (Peris et al., 2012a, 2012b).

[0007] Given the importance of interspecies yeast hybrids in many commercial fermentations, there is an interest in the art of developing new synthetic interspecies hybrids that may possess novel properties and allow for strain improvement. However, current methods for making synthetic interspecies hybrids are cumbersome and/or require genomic modifications. New hybrid brewing strains have been generated by a laborious process of isolating auxotrophic mutants, which arise spontaneously at low frequency, followed by sporulation, dissection, and crossing MAT-compatible spores to obtain hybrids (Krogerus et al., 2015; Pérez-Través et al., 2012). Although these methods lack markers, which would likely streamline approval for food and beverage applications, the strains contain mutations in important biosynthetic pathways. Furthermore, using genetic markers can generate a reduction in genetic diversity by co-selecting for physically linked chromosomal sequences that could inadvertently remove interesting industrial traits. An easier method is to first generate stable heterothallic haploids for one or both parents, such as by replacing HO with drug markers, followed by interspecies crosses (Bullard et al., 2010; Swain Lenz et al., 2014; Tirosh et al., 2009). Variations of this strategy have used complementary drug markers and auxotrophic mutants in one species and spore dissection of wild-type diploids from another (Hebly et al., 2015; Piatkowska et al., 2013). However, the persistence of drug markers in the latter hybrids raises legitimate concerns about their safety that would need to be addressed prior to introducing them into the food and beverage industry.

[0008] Accordingly, there is a need in the art for new, easier, and "scarless" methods of creating genetic diversity within a yeast cell as well as new synthetic yeast strains that may be used for commercial fermentations such as in the beverage and biofuel industries.

SUMMARY

[0009] In one aspect, methods of making synthetic yeast cells are provided. The methods may be directed to mating together two diploid (or higher ploidy) yeast species or hybrids. The methods may include i) introducing a first polynucleotide comprising a first promoter operably connected to an HO polynucleotide encoding a yeast Ho protein, a first selectable marker cassette, and a first yeast origin of replication into a first yeast cell from a first yeast species or hybrid to produce a first transformed yeast cell, ii) introducing a second polynucleotide comprising a second promoter operably connected to an HO polynucleotide encoding a yeast Ho protein, a second selectable marker cassette, and a second yeast origin of replication into a second yeast

cell from a second yeast species or hybrid to produce a second transformed yeast cell, and iii) co-culturing the first transformed yeast cell with the second transformed yeast cell to produce a mating mixture.

[0010] Alternatively, in another aspect, the methods of the present invention may also be directed to mating a diploid (or higher ploidy) yeast species with a haploid yeast species. Such methods may include i) introducing a first polynucleotide comprising a first promoter operably connected to an HO polynucleotide encoding a yeast Ho protein, a first selectable marker cassette, and a first yeast origin of replication into a first yeast cell from a first yeast species or hybrid to produce a first transformed yeast cell, ii) introducing a second polynucleotide comprising a second selectable marker cassette, and a second yeast origin of replication into a second yeast cell from a second haploid yeast species to produce a second transformed yeast cell, and iii) co-culturing the first transformed yeast cell with the second transformed yeast cell to produce a mating mixture.

[0011] In a further aspect, synthetic yeast cells are provided. The synthetic yeast cells may include 5, 6, 7, 8, 9, 10, 11, 12, 13, 14, 15, 16, or more sets of yeast chromosomes. As used herein, a “set of chromosomes” refers to a complete or substantially complete set of chromosomes. A set of chromosomes is 1N, a yeast is generally 2N (diploid), 4N (tetraploid), etc. The sets of chromosomes may all come from the same yeast species or may come from 2, 3, 4, 5, 6, 7, 8, or more different yeast species. The synthetic yeast cells of the present invention may also include chromosomes or chromosomal segments from 3, 4, 5, 6, 7, 8, or more yeast species.

[0012] In a further aspect, methods of using the synthetic yeast cells described herein are provided. The methods of use may include using any one of synthetic yeast cells described herein or any one of the synthetic yeast cells made by the methods disclosed herein in a fermentation process. In some embodiments, the fermentation process may be involved in beer making, wine making, cider making, bio-fuel production, biochemical production, or another commercially valuable process.

[0013] In a still further aspect, kits are provided. The kits may include a first polynucleotide comprising a first promoter operably connected to an HO polynucleotide encoding a yeast Ho protein, a first selectable marker cassette, and a first yeast origin of replication, and a second polynucleotide comprising a second promoter operably connected to an HO polynucleotide encoding a yeast Ho protein, a second selectable marker cassette, and a second yeast origin of replication. In some embodiments, the first selectable marker cassette and the second selectable marker cassette encode different selectable markers.

BRIEF DESCRIPTION OF THE DRAWINGS

[0014] The application file contains at least one drawing executed in color. Copies of this patent or patent application publication with color drawing(s) will be provided by the Office upon request and payment of the necessary fee.

[0015] FIGS. 1A-1D shows DNA content of cells from double-drug-resistant colonies arising from HO-induced and co-cultured diploids. Diploid parents are also displayed in FIGS. 1A-1D. Flow cytometry was used to measure the DNA content of fixed, SYBR Green-stained cells harvested during exponential growth. The approximately tetraploid Weihenstephan strain is included on all graphs as a standard

(Walther et al., 2014) and serves as a control to demonstrate that the new synthetic hybrids are tetraploid. Note that strains NRRL YB-210 and Wyeast #1007 German Ale did not survive the standard fixation and staining procedure intact, but genome sequencing and tetrad dissection have shown that NRRL YB-210 is approximately diploid (Wohlbach et al., 2014). These strains were stained by removing heating and protease treatments, and their comparative ploidy was determined (FIG. 6). FIG. 1A shows yHWA358 and its diploid (2n) Ethanol Red parent, FIG. 1B shows yHWA375 and its diploid *S. kudriavzevii* parent, FIG. 1C shows yHWA377 and its diploid *S. uvarum* parent, and FIG. 1D shows yHWA425 and its diploid *S. eubayanus* parent. Scer=*S. cerevisiae*, Skud=*S. kudriavzevii*, Suva=*S. uvarum*, Seub=*S. eubayanus*.

[0016] FIGS. 2A-2B shows how PCR and Restriction Fragment Long Polymorphism analyses confirm the presence of two different genomes in the synthetic allotetraploids. FIG. 2A shows the BRE5 PCR product is approximately the same size in all species shown. FIG. 2B shows digestion of the BRE5 PCR product with HaeIII produces a unique pattern for each species. Double-drug-resistant allotetraploids produce banding patterns consistent with those expected from a hybrid strain. Scer=*S. cerevisiae*, Skud=*S. kudriavzevii*, Suva=*S. uvarum*, Seub=*S. eubayanus*.

[0017] FIG. 3 shows an overview of the Hybrid Production (HyPr) method. Induction of HO expression by a doxycycline-inducible promoter in two diploid cultures, followed by co-culture and subsequent double-drug selection, will produce hybrids at a rate approaching 1 out of 1000 cells plated. Plasmids can then be easily cured or spontaneously lost to produce strains without genome modifications.

[0018] FIGS. 4A-4C shows vector maps of pBM5155 (FIG. 4A), pHCT2 (FIG. 4B), and pHMK34 (FIG. 4C). Sequences for these vectors have been deposited in GenBank under the accession numbers KT725394, KT725395, and KT781077, respectively. Vector maps were drawn in Geneious 4.7.4.

[0019] FIG. 5 shows pHCT2 facilitates MAT locus switching in hoΔ haploid strains of *Saccharomyces*. 47 numbered colonies had genomic DNA extracted by yeast colony PCR, and their mating-type locus analyzed by PCR as described in Table 2; the Wyeast #1007 German Ale strain was included as a diploid control (G). MATa produced the larger PCR product (left band for each colony), while MATα produced the smaller PCR product (right band for each colony). Presence of a band for only one of the strains' PCR reactions indicates a haploid cell. Colonies 3, 7, 9, 15, 18, 24, 31, 39, 43, 44, 45, and 46 only contained MATa, indicating that mating-type switching and subsequent autodiploidization did not occur in these colonies.

[0020] FIG. 6 shows NRRL YB-210 and Wyeast #1007 are approximately diploids. The standard fixation and staining procedure led to cellular degradation of both NRRL YB-210 and Wyeast #1007. Removing the heating and Proteinase K treatments prevented this degradation. NRRL YB-210 is known to be approximately diploid based on genome sequencing and tetrad dissection (Wohlbach et al., 2014). Different ratios of cells in two cell cycle phases (G1 and G2) are apparent in the figure; NRRL YB-210 has more cells in G1 of the cell cycle, while Wyeast #1007 has more cells in G2 of the cell cycle.

[0021] FIG. 7 shows HyPr hybrids without plasmids can be easily isolated. A saturated yHWA425 culture was diluted

10^{-2} , and 10 μ L of the dilution was plated to YPD (right). After three days of growth at room temperature, the plate was replicated to YPD+nat (left) and YPD +hyg (center). After two more days of growth, two colonies were picked on the basis of their drug sensitivity (circled colonies).

[0022] FIG. 8 shows how PCR and Restriction Fragment Long Polymorphism confirm the presence of three different genomes (*S. cerevisiae*×*S. kudriavzevii*×*S. eubayanus*) in a synthetic higher ploidy hybrid (likely an allohexaploid). The BRE5 PCR product was digested with HaeIII producing a pattern for each species contributing to this gene/genome, as described in FIG. 2.

[0023] FIG. 9 is a set of sequencing analyses showing that the four species hybrid contains DNA sequences associated with each of the four parent species (*S. cerevisiae*, *S. paradoxus*, *S. arboricola* and *S. uvarum*, respectively from top to bottom in the figure). Notably the selected hybrid had increased read coverage for one parent and decreased read coverage for at least one parent on some of the chromosomes.

[0024] FIG. 10 is a schematic depiction of the scheme for making the 6 species hybrid indicating the strains used in the hybrid production scheme and the resulting allododecaploid yeast.

[0025] FIG. 11A is a photograph of the 6 species hybrids showing the range of yeast morphology found in the allododecaploid yeast. FIG. 11B is a photograph of a Restriction Fragment Length Polymorphism (RFLP) analysis used to confirm the 6 species hybrid contained genetic material derived from the parental strains of yeast. This RFLP analysis confirms the presence of at least 5 of the parental lines.

[0026] FIG. 12 shows the plasmid maps for a second set of HyPr plasmids pHRW32 with Zeocin resistance, the sequence of which is provided as SEQ ID NO: 16 and pHRW40 with Kanamycin resistance, the sequence of which is provided as SEQ ID NO: 15.

DETAILED DESCRIPTION

[0027] Here, the inventors describe new methods for the efficient production of designer yeast strains based on two expression plasmids. These plasmids may include complementary dominant drug-resistance cassettes, a promoter operably connected to an HO polynucleotide encoding a yeast Ho protein, and a generalized replication origin that provides functionality across *Saccharomyces* and many other yeasts.

[0028] In the non-limiting Examples, the inventors demonstrate that the methods disclosed herein efficiently produce allotetraploid and autotetraploid strains of *Saccharomyces*, as well as new *Saccharomyces* strains including more than 4 sets of chromosomes. The resulting strains can be rapidly screened for plasmid loss, providing an efficient route towards meeting the Generally Recognized As Safe (GRAS) standards of the United States Department of Agriculture and Food and Drug Administration. These methods and strains also provide a valuable and general research tool for basic and applied research on prototrophic hybrids and polyploids of yeasts.

[0029] The methods disclosed herein also provide an alternative method for optimization via hybridization of yeast chassis strains to be used in a variety of synthetic biology applications. For example, the methods disclosed herein can be used to create chassis strains de novo from two

yeast strains with desirable traits, producing a new chassis strain with both desired characteristics without sporulation. Importantly, chassis strains made by the disclosed methods may lack drug resistance cassettes and auxotrophies, both of which are desirable qualities in beverage and biofuel strains.

[0030] Methods of making synthetic yeast cells are provided. The methods may be directed to mating together two diploid (or higher ploidy) yeast species or hybrids. The two yeast species or hybrids may be the same or different strains of a yeast species or hybrid or may be different yeast species or hybrids entirely. For example, the methods may include i) introducing a first polynucleotide comprising a first promoter operably connected to an HO polynucleotide encoding a yeast Ho protein, a first selectable marker cassette, and a first yeast origin of replication into a first yeast cell from a first yeast species or hybrid to produce a first transformed yeast cell, ii) introducing a second polynucleotide comprising a second promoter operably connected to an HO polynucleotide encoding a yeast Ho protein, a second selectable marker cassette, and a second yeast origin of replication into a second yeast cell from a second yeast species or hybrid to produce a second transformed yeast cell, and iii) co-culturing the first transformed yeast cell with the second transformed yeast cell to produce a mating mixture.

[0031] Alternatively, the methods of the present invention may also be directed to mating a diploid (or higher ploidy) yeast species with a haploid yeast species. The haploid yeast species may be the same or a different yeast strain as the diploid (or higher ploidy) yeast species or may be a different yeast species entirely. Such methods include i) introducing a first polynucleotide comprising a first promoter operably connected to an HO polynucleotide encoding a yeast Ho protein, a first selectable marker cassette, and a first yeast origin of replication into a first yeast cell from a first yeast species or hybrid to produce a first transformed yeast cell, ii) introducing a second polynucleotide comprising a second selectable marker cassette, and a second yeast origin of replication into a second yeast cell from a second haploid yeast species to produce a second transformed yeast cell, and iii) co-culturing the first transformed yeast cell with the second transformed yeast cell to produce a mating mixture.

[0032] A “yeast species,” as used herein, may refer to a substantially pure yeast species or to a yeast strain that is a mixed yeast species. A substantially pure yeast species may contain greater than 95%, 96%, 97%, 98%, 99%, or 99.9% chromosomal content from a single yeast species. For example, strains of *Saccharomyces cerevisiae* that contain greater than 95%, 96%, 97%, 98%, 99%, or 99.9% *Saccharomyces cerevisiae* chromosomal content may be considered a substantially pure yeast species and would be considered to be a *Saccharomyces cerevisiae* species. A mixed yeast species may contain substantial chromosomal content from 2 or more different yeast species. For example, a particular yeast strain may have 90% chromosomal content from *Saccharomyces uvarum* and 5% chromosomal content from *Saccharomyces cerevisiae* and 5% chromosomal content from *Saccharomyces eubayanus*. In the case of mixed species, and in accordance with the present invention, the yeast species of a yeast cell from a mixed yeast species is determined by which species contributes the majority of the chromosomal content in the cell. Thus, in the preceding mixed species example, the exemplary yeast strain would be considered a *Saccharomyces uvarum* species.

[0033] The yeast species or hybrids of the present invention may be ascomycetes. Suitable yeast species or hybrids of the present invention may be from the family Saccharomycetaceae. In some embodiments, the yeast species or hybrids are from the genus *Saccharomyces*. Suitable *Saccharomyces* species may include, without limitation, *Saccharomyces cerevisiae*, *Saccharomyces paradoxus*, *Saccharomyces mikatae*, *Saccharomyces jurei*, *Saccharomyces arboricola*, *Saccharomyces kudriavzevii*, *Saccharomyces uvarum*, and *Saccharomyces eubayanus*. Suitable *Saccharomyces* hybrids may include, without limitation, *Saccharomyces* hybrids having at least one parent selected from the group consisting of *Saccharomyces cerevisiae*, *Saccharomyces paradoxus*, *Saccharomyces mikatae*, *Saccharomyces jurei*, *Saccharomyces arboricola*, *Saccharomyces kudriavzevii*, *Saccharomyces uvarum*, and *Saccharomyces eubayanus*. Suitable *Saccharomyces* species may also include any taxonomic synonyms of these species or any newly discovered species to be members of the genus *Saccharomyces*.

[0034] The yeast species of the present methods may be haploid (1N), diploid (2N), triploid (3N), tetraploid (4N), pentaploid (5N), hexaploid (6N), heptaploid (7N), octaploid (8N), nonaploid (9N), decaploid (10N), 11N, 12N, 13N, 14N, 15N, 16N or more. The yeast hybrids of the present methods may be diploid (2N), triploid (3N), tetraploid (4N), pentaploid (5N), hexaploid (6N), heptaploid (7N), octaploid (8N), nonaploid (9N), decaploid (10N), 11N, 12N, 13N, 14N, 15N, 16N or more. In some embodiments, the first yeast species or hybrid and the second yeast species or hybrid of the present methods are diploid. In other embodiments, they may be tetraploid or higher ploidy, such as the embodiment shown to create hexaploids (FIG. 8) and 12N yeasts (FIG. 11B).

[0035] Suitable yeast species that may be used in accordance with the present invention include, without limitation, species of the genera *Candida*, *Saccharomyces*, *Kazachstania*, *Nakaseomyces*, *Kluyveromyces*, *Lachancea*, *Naumovozyma*, *Vanderwaltozyma*, *Tetrapispora*, *Yueomyces*, *Zygosaccharomyces*, *Torulaspora*, *Zygorulasporea*, *Eremothecium*, and *Ashbya*. In general, we expect the present invention to work on genera whose life cycle, mating-type locus, and silent mating cassettes are sufficiently similar to *Saccharomyces*, especially with respect to Ho protein binding to and cutting the MAT locus to enable mating-type switching.

[0036] As used herein, a “yeast hybrid” refers to a yeast cell having at least one set of chromosomes from at least two different yeast species. The present methods may not only be performed using two yeast cells from either the same or different yeast species, but may also be used with yeast hybrids. A yeast hybrid may be a naturally occurring hybrid yeast strain, such as the *Saccharomyces cerevisiae* × *Saccharomyces eubayanus* hybrids commonly used to produce lager beers. A yeast hybrid may also be a hybrid yeast strain developed synthetically in the lab using, for example, the methods disclosed herein.

[0037] The present methods may be performed through 1, 2, 3, 4, 5, 6, 7, 8, 9, 10, or more rounds of mating. Thus, the polyploid yeast cells created using the present methods may be used as starting materials for performing subsequent rounds of the present methods. In the Examples, the inventors use 2 rounds of mating to produce a hexaploid yeast cell having 2 sets of chromosomes from three different yeast species. The inventors were further able to combine two tetraploid species to generate an 8N yeast and then use this

8N yeast to mate with another 4N yeast to generate a 12N yeast. See, e.g., Example 2 and FIGS. 8-11. The inventors also conjecture that the hexaploid yeast cell could be mated with a tetraploid using the methods described herein to produce a decaploid (10N) yeast cell. It thus is particularly envisioned that the present methods may be performed reiteratively to create synthetic yeast strains that have large sets of chromosomes (ploidy) and/or chromosomes or chromosomal segments from multiple yeast species.

[0038] In some embodiments of the present methods, the first yeast species or hybrid and the second yeast species or hybrid are different yeast species or hybrids. As used herein, a “different yeast species or hybrid” refers to yeast species or hybrids that are not the same as determined in view of the “yeast species” and “yeast hybrid” definitions provided herein. For example, if the first yeast species or hybrid was a yeast strain having 90% chromosomal content from *Saccharomyces uvarum* and 5% chromosomal content from *Saccharomyces cerevisiae* and 5% chromosomal content from *Saccharomyces eubayanus* and the second yeast species was a substantially pure *Saccharomyces uvarum* strain, the first yeast species or hybrid and the second yeast species or hybrid would be considered the same—*Saccharomyces uvarum*. Examples of embodiments where the first yeast species or hybrid and the second yeast species or hybrid would be considered different might include the first yeast species or hybrid being *Saccharomyces cerevisiae* and the second yeast species or hybrid being *Saccharomyces eubayanus*.

[0039] As used herein, the terms “polynucleotide,” “polynucleotide sequence,” “nucleic acid” and “nucleic acid sequence” refer to a nucleotide, oligonucleotide, polynucleotide (which terms may be used interchangeably), or any fragment thereof. These phrases may refer to DNA or RNA of natural or synthetic origin (which may be single-stranded or double-stranded and may represent the sense or the antisense strand). Polynucleotides may also include modified nucleotides that permit correct read-through by a polymerase and do not alter expression of, for example, the HO polypeptide encoded by polynucleotides described herein. Preferably, the polynucleotides described herein are DNA.

[0040] The polynucleotides of the present invention may further include a promoter. The terms “promoter,” “promoter region,” or “promoter sequence” refer generally to transcriptional regulatory regions of a gene, which may be found at the 5' or 3' side of the HO polynucleotide, or within the coding region of the HO polynucleotide. Typically, a promoter is a DNA regulatory region capable of binding RNA polymerase in a cell and initiating transcription of a downstream (3' direction) coding sequence. The typical 5' promoter sequence is bounded at its 3' terminus by the transcription initiation site and extends upstream (5' direction) to include the minimum number of bases or elements necessary to initiate transcription at levels detectable above background. Within the promoter sequence is a transcription initiation site (conveniently defined by mapping with nuclease S1), as well as protein binding domains (consensus sequences) responsible for the binding of RNA polymerase.

[0041] In some embodiments, the promoters within the polynucleotides of the present invention may be operably connected to the HO polynucleotide. As used herein, a promoter is “operably connected to” or “operably linked to” when it is placed into a functional relationship with a second polynucleotide sequence. For instance, a promoter is oper-

ably connected to an HO polynucleotide if the promoter is connected to the HO polynucleotide such that it may effect transcription of the HO polynucleotide coding sequence. In various embodiments, the HO polynucleotides may be operably linked to at least 1, at least 2, at least 3, at least 4, at least 5, or at least 10 promoters.

[0042] Promoters useful in the practice of the present invention include, but are not limited to, constitutive, inducible, temporally-regulated, and chemically regulated promoters. Preferably, the promoters are inducible. Suitable inducible promoters for expression in yeast include, without limitation, galactose inducible promoters (i.e., GAL1) and doxycycline-inducible promoters. Those of skill in the art are familiar with a wide variety of additional promoters for use in various yeast species.

[0043] In the present methods, the first and second promoters may be the same promoter or may be different promoters. In some embodiments, the first and second promoters are the same inducible promoter. In embodiments where the first and second promoters are inducible promoters, the present methods may further include inducing the first and second inducible promoters prior to co-culturing the first transformed yeast cell with the second transformed yeast cell (step (iii) of the present methods).

[0044] The polynucleotides of the present invention may include an HO polynucleotide encoding a yeast Ho protein. Yeast Ho proteins are site-specific endonucleases that produce a double-strand break in the MAT locus. The double-strand break is followed by a unidirectional gene conversion event that replaces the information at the MAT locus by information copied from either of the two homologous loci (HMR and HML). Yeast Ho proteins may be any of the Ho proteins found in any yeast species including, without limitation, those yeast species closely related to *Candida glabrata*. The *S. cerevisiae* Ho recognition site in MAT α (TTTCCGCAACAGT; SEQ ID NO: 13) and MAT α (TTCGCGCAACAGT; SEQ ID NO: 14) differs from *C. glabrata* by one nucleotide, but MAT α Ho recognition site is recognized by ScerHo. The presence of the HO locus may extend to all genera classified in the family Saccharomycetaceae because *Kluyveromyces lactis* has a relic of HO, but it is absent from other species, such as *Kluyveromyces waltii*. Suitably, the protein sequence of an exemplary yeast Ho protein from *Saccharomyces cerevisiae* is indicated in SEQ ID NO: 11. In some embodiments, the yeast Ho protein comprises SEQ ID NO: 11 or a mutant, variant, derivative, or fragment thereof.

[0045] As used herein, a “protein,” “polypeptide,” or “peptide” may be used interchangeably to refer to a polymer of amino acids. A “protein” as contemplated herein typically comprises a polymer of naturally occurring amino acids (e.g., alanine, arginine, asparagine, aspartic acid, cysteine, glutamine, glutamic acid, glycine, histidine, isoleucine, leucine, lysine, methionine, phenylalanine, proline, serine, threonine, tryptophan, tyrosine, and valine).

[0046] A yeast Ho protein may include “mutant” proteins, variants, and derivatives thereof. As used herein the term “wild-type” is a term of the art understood by skilled persons and means the typical form of an organism, strain, gene or characteristic as it occurs in nature as distinguished from mutant or variant forms. As used herein, a “variant,” “mutant,” or “derivative” refers to a polypeptide molecule having an amino acid sequence that differs from a reference protein or polypeptide molecule. A variant or mutant may

have one or more insertions, deletions, or substitutions of an amino acid residue relative to a reference molecule. A variant or mutant may include a fragment of a reference molecule. For example, a yeast Ho protein mutant or variant protein may have one or more insertions, deletions, or substitution of at least one amino acid residue relative to the yeast Ho “wild-type” protein. The protein sequences of a “wild-type” yeast Ho protein from *Saccharomyces cerevisiae* is presented as SEQ ID NO: 11. This sequence may be used as a reference sequence.

[0047] A yeast Ho protein may be a full-length protein or may be fragments of the full-length protein. As used herein, a “fragment” is a portion of an amino acid sequence, which is identical in sequence to but shorter in length than a reference sequence. A fragment may comprise up to the entire length of the reference sequence, minus at least one amino acid residue. For example, a fragment may comprise from 5 to 1000 contiguous amino acid residues of a reference protein, respectively. In some embodiments, a fragment may comprise at least 5, 10, 15, 20, 25, 30, 40, 50, 60, 70, 80, 90, 100, 150, 250, or 500 contiguous amino acid residues of a reference protein. Fragments may be preferentially selected from certain regions of a molecule. The term “at least a fragment” encompasses the full-length polypeptide. A fragment may include an N-terminal truncation, a C-terminal truncation, or both truncations relative to the full-length yeast Ho protein. Preferably, a fragment of a yeast Ho protein includes amino acid residues required for recognition and cleavage of the MAT locus site.

[0048] A “deletion” in a yeast Ho protein refers to a change in the amino acid sequence resulting in the absence of one or more amino acid residues. A deletion may remove at least 1, 2, 3, 4, 5, 10, 20, 50, 100, 200, or more amino acids residues. A deletion may include an internal deletion and/or a terminal deletion (e.g., an N-terminal truncation, a C-terminal truncation or both of a reference polypeptide).

[0049] “Insertions” and “additions” in a yeast Ho protein refer to changes in an amino acid sequence resulting in the addition of one or more amino acid residues. An insertion or addition may refer to 1, 2, 3, 4, 5, 10, 20, 30, 40, 50, 60, 70, 80, 90, 100, 150, 200, or more amino acid residues. A variant of a yeast Ho protein may have N-terminal insertions, C-terminal insertions, internal insertions, or any combination of N-terminal insertions, C-terminal insertions, and internal insertions.

[0050] Regarding proteins, the phrases “percent identity,” “% identity,” and “% sequence identity” refer to the percentage of residue matches between at least two amino acid sequences aligned using a standardized algorithm. Methods of amino acid sequence alignment are well-known. Some alignment methods take into account conservative amino acid substitutions. Such conservative substitutions, explained in more detail below, generally preserve the charge and hydrophobicity at the site of substitution, thus preserving the structure (and therefore function) of the polypeptide. Percent identity for amino acid sequences may be determined as understood in the art. (See, e.g., U.S. Pat. No. 7,396,664). A suite of commonly used and freely available sequence comparison algorithms is provided by the National Center for Biotechnology Information (NCBI) Basic Local Alignment Search Tool (BLAST), which is available from several sources, including the NCBI, Bethesda, Md., at its website. The BLAST software suite includes various sequence analysis programs including

“blastp,” that is used to align a known amino acid sequence with other amino acids sequences from a variety of databases. As described herein, variants, mutants, or fragments (e.g., a yeast Ho protein variant, mutant, or fragment thereof) may have 99%, 98%, 97%, 96%, 95%, 94%, 93%, 92%, 91%, 90%, 80%, 70%, 60%, or 50% amino acid sequence identity relative to a reference molecule (e.g., relative to a full-length yeast Ho protein (SEQ ID NO: 11)).

[0051] Protein sequence identity may be measured over the length of an entire defined protein sequence, for example, as defined by a particular SEQ ID number, or may be measured over a shorter length, for example, over the length of a fragment taken from a larger, defined protein sequence, for instance, a fragment of at least 15, at least 20, at least 30, at least 40, at least 50, at least 70 or at least 150 contiguous residues. Such lengths are exemplary only, and it is understood that any fragment length supported by the sequences shown herein, in the tables, figures or Sequence Listing, may be used to describe a length over which percentage identity may be measured.

[0052] The amino acid sequences of the yeast Ho protein variants, mutants, or derivatives as contemplated herein may include conservative amino acid substitutions relative to a reference amino acid sequence. For example, a variant, mutant, or derivative polypeptide may include conservative amino acid substitutions relative to a reference molecule. “Conservative amino acid substitutions” are those substitutions that are a substitution of an amino acid for a different amino acid where the substitution is predicted to interfere least with the properties of the reference polypeptide. In other words, conservative amino acid substitutions substantially conserve the structure and the function of the reference polypeptide. Conservative amino acid substitutions generally maintain (a) the structure of the polypeptide backbone in the area of the substitution, for example, as a beta sheet or alpha helical conformation, (b) the charge or hydrophobicity of the molecule at the site of the substitution, and/or (c) the bulk of the side chain.

[0053] The HO polynucleotides encoding the yeast Ho proteins, fragments, variants, mutants, or derivatives thereof may be any polynucleotide encoding the appropriate yeast Ho protein amino acid sequence. Those of skill in the art also understand the degeneracy of the genetic code and that a variety of polynucleotides can encode the same polypeptide. In some embodiments, the polynucleotides may be codon-optimized for expression in a particular yeast cell. While particular nucleotide sequences which are found in *Saccharomyces cerevisiae* (i.e., SEQ ID NO: 12) are disclosed herein any nucleotide sequences may be used which encode a desired form of the yeast Ho proteins described herein. Thus non-naturally occurring sequences may be used. These may be desirable, for example, to enhance expression in a particular yeast species. Computer programs for generating degenerate coding sequences are available and can be used for this purpose as well as other means.

[0054] The polynucleotides of the present invention may also include a selectable marker cassette. In the Examples, the selectable marker cassettes used in the exemplary HyPr pHCT2 and pHMK34 plasmids conferred resistance to nourseothricin (natMX4) and hygromycin (hphMX), respectively. Two additional plasmids were generated for use in the methods provided herein including pHRW32 (SEQ ID NO: 16), which includes zeocin resistance and pHRW40 (SEQ ID NO: 15), which includes G418 resistance. Other select-

able markers conferring resistance to other antibiotics such as, kanMX, amdS, TK, Sh ble or ble, which confer resistance to G418, fluoroacetamide, antifolates, Zeocin or phleomycin, respectively could also be used. Those of skill in the art will appreciate that additional combinations of selectable markers can be used as well. Other forms of selectable markers may be used such as markers that provide a growth advantage or colorimetric selection other than antibiotic resistance. The selectable marker cassettes include a polynucleotide encoding the selectable marker operably connected to a promoter capable of inducing transcription of the selectable marker.

[0055] Suitably, the first selectable marker cassette and the second selectable marker cassette encode different selectable markers. By encoding different complementary selectable marker cassettes, the disclosed methods readily select for mating events between the first yeast cell and the second yeast cell.

[0056] The polynucleotides of the present invention may also include a yeast origin of replication to allow replication of the polynucleotides in a particular yeast species. Suitably, the first yeast origin of replication and the second yeast origin of replication are functional across many yeast species including, without limitation, all *Saccharomyces* species. In the Examples, the yeast origin of replication used in the exemplary HyPr pHCT2 and pHMK34 plasmids included KARS101 from *Kluyveromyces lactis* and *S. cerevisiae* CEN and ARS sequences to improve stability in multiple yeast species.

[0057] As used herein, “introducing” describes a process by which exogenous polynucleotides (e.g., DNA or RNA) are introduced into a recipient yeast cell. Methods of introducing polynucleotides into a yeast cell are known in the art and may include, without limitation, transformation methods such as electroporation and lithium acetate/single-stranded carrier DNA/PEG methods. Transformation may occur under natural or artificial conditions according to various methods well known in the art, and may rely on any known method for the insertion of foreign nucleic acid sequences into a yeast cell. The method for transformation may be selected based on the type of yeast cell being transformed and may include, but is not limited to, electroporation, heat shock, chemical transformation methods such as lithium acetate/single-stranded carrier DNA/PEG methods.

[0058] As used herein, a “transformed” yeast cell refers to a yeast cell carrying an exogenous polynucleotide that was introduced into the yeast cell using the transformation methods described herein.

[0059] As used herein, “co-culturing” refers to growing at least two yeast cells in an appropriate media. Common yeast growth media are well known in the art and include, without limitation, YPD media. In some embodiments, the present methods may include co-culturing the first transformed yeast cell with the second transformed yeast cell to produce a mating mixture. A “mating mixture” refers to a mixture of at least two yeast cells, which will likely have at least one yeast cell having a MATa mating type and at least one yeast cell having a MATα mating type. Suitably, in some embodiments, the mating mixture is introduced onto plates to facilitate mating of the yeast cells.

[0060] In some embodiments, the present methods may further include selecting at least a portion of the mating mixture for the first selectable marker and the second

selectable marker to select for a synthetic yeast cell. A “synthetic yeast cell” refers to a yeast that may be made using the present methods. The “selecting at least a portion of the mating mixture” may be performed by simply adding the appropriate agents (i.e., antibiotics) to the growth media to select for cells harboring the first selectable marker and/or the second selectable marker.

[0061] The present methods may further include culturing the synthetic yeast cell in non-selective media to produce a synthetic yeast cell lacking the first polynucleotide and/or the second polynucleotide. Such embodiments of the present methods may provide an efficient route towards meeting the Generally Recognized As Safe (GRAS) standards of the United States Department of Agriculture and Food and Drug Administration.

[0062] In some embodiments, the present methods may further include selecting the synthetic yeast cell under conditions to optimize the synthetic yeast cell for a fermentation process. As used herein, a “fermentation process” may involve any fermentation process involved in beer making, wine making, cider, sake and traditional alcoholic beverages (mezcal, chicha, mudai, among others), biofuel production, or other commercially valuable process. Extensive prior work has shown that yeast polyploid strains, for example, are relatively unstable, rapidly losing chromosomes to form aneuploid strains. This loss occurs rapidly with genome content reduction to near-diploid levels in 200 to 800 generations. The inventors expect that synthetic yeast cells made via the methods disclosed herein to behave in a similar manner. This could, in fact, be a desirable trait for many applications, as placing an unstable polyploid strain in a selective condition will influence which components of the genome are retained or lost from which parent, allowing for more rapid adaptation to that condition. The inventors expect that synthetic yeast cells made by the methods disclosed herein will also evolve aneuploidy given enough time, but again, many of these aneuploidies may be advantageous in the conditions where they are evolved.

[0063] Synthetic yeast cells are provided. The synthetic yeast cells may include 5, 6, 7, 8, 9, 10, 11, 12, 13, 14, 15, 16, or more sets of yeast chromosomes. As used herein, a “set of chromosomes” refers to a complete or substantially complete set of chromosomes. The sets of chromosomes may all come from the same yeast species or may come from 2, 3, 4, 5, 6, 7, 8, or more different yeast species.

[0064] The synthetic yeast cells of the present invention may also include chromosomes or chromosomal segments from 3, 4, 5, 6, 7, 8, or more yeast species.

[0065] The synthetic yeast cells may be an ascomycete including, without limitation, a yeast species from the family Saccharomycetaceae or a *Saccharomyces*. In some embodiments, the chromosomes or chromosomal segments in the synthetic yeast cells are from an ascomycete, including, without limitation, *Saccharomyces*. Suitable *Saccharomyces* species include, without limitation, *Saccharomyces cerevisiae*, *Saccharomyces paradoxus*, *Saccharomyces mikatae*, *Saccharomyces jurei*, *Saccharomyces arboricola*, *Saccharomyces kudriavzevii*, *Saccharomyces uvarum*, and *Saccharomyces eubayanus*.

[0066] The synthetic yeast cells may be selected from the strains consisting of yHWA358, yHWA375, yHWA377, yHWA425, yHWA439, yHWA451, yHWA452, yHWA455, and yHWA456, yHWA457, yHWA458, yHWA459,

yHWA460, any of the strains identified in Table 1 or any other yeast strain developed using the methods provided herein.

[0067] Methods of using the synthetic yeast cells described herein are provided. The methods of use may include using any one of synthetic yeast cells described herein or any one of the synthetic yeast cells made by the methods disclosed herein in a fermentation process. In some embodiments, the fermentation process may be involved in beer making, wine making, biofuel production, or another commercially valuable process.

[0068] Kits are provided. The kits may include a first polynucleotide comprising a first promoter operably connected to an HO polynucleotide encoding a yeast Ho protein, a first selectable marker cassette, and a first yeast origin of replication, and a second polynucleotide comprising a second promoter operably connected to an HO polynucleotide encoding a yeast Ho protein, a second selectable marker cassette, and a second yeast origin of replication. In some embodiments, the first selectable marker cassette and the second selectable marker cassette encode different selectable markers.

[0069] Optionally, the first promoter and/or the second promoter may be an inducible promoter. The first yeast origin of replication and the second yeast origin of replication may also be functional across all *Saccharomyces* species or other yeast species.

[0070] The kits may further include nourseothricin, hygromycin, G418, fluoroacetamide, antifolates, Zeocin, phleomycin, doxycycline, at least two different *Saccharomyces* species and/or instructions for performing any one of the methods of disclosed herein.

[0071] The present disclosure is not limited to the specific details of construction, arrangement of components, or method steps set forth herein. The compositions and methods disclosed herein are capable of being made, practiced, used, carried out and/or formed in various ways that will be apparent to one of skill in the art in light of the disclosure that follows. The phraseology and terminology used herein is for the purpose of description only and should not be regarded as limiting to the scope of the claims. Ordinal indicators, such as first, second, and third, as used in the description and the claims to refer to various structures or method steps, are not meant to be construed to indicate any specific structures or steps, or any particular order or configuration to such structures or steps. All methods described herein can be performed in any suitable order unless otherwise indicated herein or otherwise clearly contradicted by context. The use of any and all examples, or exemplary language (e.g., “such as”) provided herein, is intended merely to facilitate the disclosure and does not imply any limitation on the scope of the disclosure unless otherwise claimed. No language in the specification, and no structures shown in the drawings, should be construed as indicating that any non-claimed element is essential to the practice of the disclosed subject matter. The use herein of the terms “including,” “comprising,” or “having,” and variations thereof, is meant to encompass the elements listed thereafter and equivalents thereof, as well as additional elements. Embodiments recited as “including,” “comprising,” or “having” certain elements are also contemplated as “consisting essentially of” and “consisting of” those certain elements.

[0072] Recitation of ranges of values herein are merely intended to serve as a shorthand method of referring indi-

vidually to each separate value falling within the range, unless otherwise indicated herein, and each separate value is incorporated into the specification as if it were individually recited herein. For example, if a concentration range is stated as 1% to 50%, it is intended that values such as 2% to 40%, 10% to 30%, or 1% to 3%, etc., are expressly enumerated in this specification. These are only examples of what is specifically intended, and all possible combinations of numerical values between and including the lowest value and the highest value enumerated are to be considered to be expressly stated in this disclosure. Use of the word “about” to describe a particular recited amount or range of amounts is meant to indicate that values very near to the recited amount are included in that amount, such as values that could or naturally would be accounted for due to manufacturing tolerances, instrument and human error in forming measurements, and the like. All percentages referring to amounts are by weight unless indicated otherwise.

[0073] No admission is made that any reference, including any non-patent or patent document cited in this specification, constitutes prior art. In particular, it will be understood that, unless otherwise stated, reference to any document herein does not constitute an admission that any of these documents forms part of the common general knowledge in the art in the United States or in any other country. Any discussion of the references states what their authors assert, and the applicant reserves the right to challenge the accuracy and pertinence of any of the documents cited herein. All references cited herein are fully incorporated by reference in their entirety, unless explicitly indicated otherwise. The present disclosure shall control in the event there are any disparities between any definitions and/or description found in the cited references.

[0074] Unless otherwise specified or indicated by context, the terms “a”, “an”, and “the” mean “one or more.” For example, “a protein” or “an RNA” should be interpreted to mean “one or more proteins” or “one or more RNAs,” respectively.

[0075] The following examples are meant only to be illustrative and are not meant as limitations on the scope of the invention or of the appended claims.

EXAMPLES

[0076] Example 1—Efficient Engineering of Marker-Free Synthetic Allotetraploids of *Saccharomyces*

[0077] *Saccharomyces* interspecies hybrids are critical biocatalysts in the fermented beverage industry, including in the production of lager beers, Belgian ales, ciders, and cold-fermented wines. Current methods for making synthetic interspecies hybrids are cumbersome and/or require genome modifications. We have developed a simple, robust, and efficient method for generating allotetraploid strains of prototrophic *Saccharomyces* without sporulation or nuclear genome manipulation. *S. cerevisiae*×*S. eubayanus*, *S. cerevisiae*×*S. kudriavzevii*, and *S. cerevisiae*×*S. uvarum* designer hybrid strains were created as synthetic lager, Belgian, and cider strains, respectively. The ploidy and hybrid nature of the strains were confirmed using flow cytometry and PCR-RFLP analysis, respectively. This method provides an efficient means for producing novel synthetic hybrids for beverage and biofuel production, as well as for constructing tetraploids to be used for basic research in evolutionary genetics and genome stability.

[0078] Many eukaryotic organisms are able to reproduce sexually, wherein meiosis serves to both increase genetic diversity and to repair genetic material (Kohl and Sekelsky, 2013). As with other eukaryotes, fungal meiosis generally initiates in diploid cells (John, 1990). Regulation of this process involves specialized genetic loci called the mating-type (MAT) loci (Kronstad and Staben, 1997). While basidiomycetes may possess thousands of different mating types, ascomycetes possess only two (Casselton and Olesnick, 1998). Ascomycete MAT loci contain between one and three genes. The mating-type genes are not recently diverged homologs, and are thus described as idiomorphs, rather than alleles. These mating-type genes encode transcription factors that regulate the expression of meiosis-specific genes (Van Heeckeren et al., 1998), as well as other genes that function in self recognition (Glass et al., 2000), pheromone production (Bardwell, 2004), and non-homologous end joining (Frank-Vaillant and Marcand, 2001). Heterothallic ascomycetes, such as *Neurospora crassa*, require two individuals of different mating types to contribute haploid nuclei towards a transient diploid meiotic precursor cell (Glass et al., 1990; Staben and Yanofsky, 1990).

[0079] The genus *Saccharomyces* is composed of unicellular diploid ascomycete fungi (Hittinger, 2013). The *S. cerevisiae* MAT idiomorphs are termed MATa and MATα, and both possess two genes (Haber, 2012). Unlike many other ascomycetes where vegetative haploid nuclei give rise to a transient diploid cell, *Saccharomyces* haploid spores of a single mating type rapidly give rise to stable diploid cells possessing both mating-type loci by way of mating-type switching (Haber, 2012). When a newly germinated haploid cell divides, the mother cell expresses HO, producing an endonuclease that specifically targets the mating-type locus. The resulting DNA double-strand break (DSB) is repaired using information from silenced copies of either mating-type idiomorph found on the same chromosome as the MAT locus (designated HML and HMR). Repairing the DSB lesion occurs by replacing the existing MAT idiomorph with the silenced copy of the other MAT idiomorph, resulting in the mother cell switching to the opposite mating type. As the daughter cell retains the initial idiomorph, mating-type switching ensures two haploid cells of opposite mating-types are adjacent to one another for schmooing and the formation of a diploid zygote. Deletion of HO prevents mating types from being switched, forming stable haploid strains, such as those typically used in laboratory research (Walker et al., 2003). Indeed, the plasticity of *Saccharomyces* ploidy is a major component of the awesome power of yeast genetics. Induced HO expression from plasmids in hoΔ strains triggers mating-type switching, resulting in diploidization of otherwise stable haploid strains (Herskowitz and Jensen, 1991; Jensen and Herskowitz, 1984). This diploid yeast cell can then be sporulated by standard methods, dissected, and the progeny screened for their mating type. The resulting haploids are isogenic to the original haploid strain save for their mating types, which can then be used in downstream genetic crosses. In addition to long-standing use to control mating type and ploidy in lab strains of *S. cerevisiae*, induction of HO expression has also been used to enable crosses between a fertile strain of *S. uvarum* and a sterile strain whose genome was predominantly *S. uvarum*, allowing a trait to be mapped using standard meiotic techniques (Schwartz et al., 2012).

[0080] All seven known species of *Saccharomyces* yeasts possess the same mating-type locus organization and a predominantly diploid or diplontic lifestyle. Only limited pre-zygotic speciation barriers exist between *Saccharomyces* species (Maclean and Greig, 2008), making hybridization a trivial process with marked heterothallic haploids (Bullard et al., 2010; Hebly et al., 2015; Hittinger, 2013; Piotrowski et al., 2012; Scannell et al., 2011; Swain Lenz et al., 2014; Tirosh et al., 2009). Hybridization events also happen in the wild, though at a very low frequency (Mortimer, 2000). These hybrids arise when a cell of one species mates with a cell from another. Interspecies hybridization can either occur between two haploids, as is typically done in the laboratory, or through “rare mating” when one or both parents are diploid. Rare mating diploids can gain mating competency by simply inactivating one idiomorph to become hemizygous or undergoing spontaneous gene conversion at the MAT locus and becoming MAT α /MAT α or MAT α /MAT α diploids (Gunge and Nakatomi, 1972).

[0081] Interspecies hybrids spontaneously arising in this manner have found purchase in the conditions created by humans during industrial fermentations, such as brewing; indeed, hybrids produce many commercially important fermented beverages. For example, *Saccharomyces cerevisiae* × *Saccharomyces eubayanus* hybrids are used to produce lager beer, the most common fermented beverage on the planet (Corran, 1975; Libkind et al., 2011). Two major lineages are used in lager production (Dunn and Sherlock, 2008; Nakao et al., 2009; Walther et al., 2014), and recent evidence indicates that these two lineages arose from independent hybridization events, suggesting that genetic diversity from the parental populations may be one contributor to the phenotypic differences seen in modern industrial strains (Baker et al., 2015). Many other fermented beverages also make use of *Saccharomyces* hybrids: *S. cerevisiae* × *Saccharomyces uvarum* hybrids are used in production of some ciders and cold-fermented wines (Le Jeune et al., 2007; Masneuf et al., 1998; Pérez-Través et al., 2014b), while many Belgian ale and some European wine yeasts are *S. cerevisiae* × *Saccharomyces kudriavzevii* hybrids (Peris et al., 2012a, 2012b).

[0082] The discovery of the wild genetic stocks related to the constituent species of industrial interspecies hybrids (Almeida et al., 2014; Libkind et al., 2011; Sampaio and Gonçalves, 2008), as well as the discovery of several more divergent lineages that do not seem to have contributed to the production of fermented beverages (Bing et al., 2014; Hittinger et al., 2010; Leducq et al., 2014; Liti et al., 2009, 2005; Peris et al., 2014; Wang et al., 2012), has raised interest in synthetic interspecies hybrids that may possess novel properties and allow for strain improvement. New hybrid brewing strains have been generated by a laborious

process of isolating auxotrophic mutants, which arise spontaneously at low frequency, followed by crossing to obtain hybrids (Krogerus et al., 2015; Pérez-Través et al., 2012). Although this method lacks markers, which would likely streamline approval for food and beverage applications, the strains contain mutations in important biosynthetic pathways. An easier method is to first generate stable heterothallic haploids for one or both parents, for example by replacing HO with drug markers, followed by interspecies crosses (Bullard et al., 2010; Swain Lenz et al., 2014; Tirosh et al., 2009). Variations of this strategy have used complementary drug markers and auxotrophic mutants in one species and spore dissection of wild-type diploids from another (Hebly et al., 2015; Piatkowska et al., 2013). However, the persistence of drug markers in the latter hybrids raises legitimate concerns about their safety that would need to be addressed prior to introducing them into the food and beverage industry.

[0083] Here we describe a generalized method for the efficient production of designer hybrid strains of *Saccharomyces* based on a series of inducible expression plasmids named HyPr (for Hybrid Production). These plasmids contain complementary dominant drug-resistance markers, a doxycycline-inducible HO cassette, and a generalized replication origin that provides functionality across *Saccharomyces* and many other yeasts. HyPr efficiently produces allotetraploid and autotetraploid strains of *Saccharomyces*, as well as allohexaploid strains and strains of higher ploidy. The resulting strains can be rapidly screened for plasmid loss, providing an efficient route towards meeting the standards that the United States Department of Agriculture and Food and Drug Administration have previously applied to a wine strain of *S. cerevisiae*, which is Generally Recognized As Safe (GRAS) (Husnik et al., 2006). These techniques also provide a valuable and general research tool for basic and applied research on prototrophic hybrids and polyploids of *Saccharomyces*.

Materials and Methods

Strains, Culture Conditions, and Media

[0084] Strains used in this work are found in Table 1. *S. cerevisiae* strains were cultured at 30° C., except when they were being co-cultured with another species. All other *Saccharomyces* species were cultured at room temperature (22–23° C.). Routine cultures were maintained in YPD (1% yeast extract, 2% peptone, 2% glucose). Hygromycin was added to YPD at a concentration of 200 mg/L to make YPD+hyg. Nourseothricin was added to YPD at a concentration of 100 mg/L to make YPD+nat. All liquid media was solidified when needed by the addition of 1.8% agar.

TABLE 1

Strains used in this work			
Identifier	Species	Genotype	Source
RM11-1a	<i>Saccharomyces cerevisiae</i>	MAT α leu2- Δ ura3- Δ ho Δ ::KanMX	Brem et al. (2002)
Ethanol Red	<i>Saccharomyces cerevisiae</i>	MAT α /MAT α	Fermentis
NRRL YB-210	<i>Saccharomyces cerevisiae</i>	MAT α /MAT α	Mortimer and Johnston (1986)

TABLE 1-continued

Strains used in this work			
Wyeast #1007, German Ale ZP 591	<i>Saccharomyces cerevisiae</i> <i>Saccharomyces kudriavzevii</i>	MATa/MAT α MATa/MAT α	Wyeast Sampaio and Gonçalves (2008)
CBS 7001 yHKS210	<i>Saccharomyces uvarum</i> <i>Saccharomyces eubayanus</i>	MATa/MAT α MATa/MAT α	Scannell et al. (2011) Peris et al. (2014)
White Labs WLP830, German Lager, Weihestephan 34/70	<i>Saccharomyces cerevisiae</i> × <i>Saccharomyces eubayanus</i>	MATa/MATa/MAT α /MAT α	White Labs
yHWA338	<i>Saccharomyces cerevisiae</i>	RM11-1a [pHCT2]	This work
yHWA340	<i>Saccharomyces cerevisiae</i>	Ethanol Red [pHCT2]	This work
yHWA341	<i>Saccharomyces cerevisiae</i>	NRRL YB-210 [pHMK34]	This work
yHWA348	<i>Saccharomyces uvarum</i>	CBS 7001 [pHMK34]	This work
yHWA350	<i>Saccharomyces cerevisiae</i>	Wyeast #1007 [pHCT2]	This work
yHWA352	<i>Saccharomyces eubayanus</i>	yHKS210 [pHMK34]	This work
yHWA354	<i>Saccharomyces kudriavzevii</i>	ZP 591 [pHMK34]	This work
yHWA358	<i>Saccharomyces cerevisiae</i>	Ethanol Red [pHCT2] × NRRL YB-210 [pHMK34]	This work
yHWA375	<i>Saccharomyces cerevisiae</i> × <i>Saccharomyces kudriavzevii</i>	Wyeast #1007 [pHCT2] × ZP 591 [pHMK34]	This work
yHWA377	<i>Saccharomyces cerevisiae</i> × <i>Saccharomyces uvarum</i>	Wyeast #1007 [pHCT2] × CBS 7001 [pHMK34]	This work
yHWA425	<i>Saccharomyces cerevisiae</i> × <i>Saccharomyces eubayanus</i>	Wyeast #1007 [pHCT2] × yHKS210 [pHMK34]	This work
yHWA439	<i>Saccharomyces cerevisiae</i> × <i>Saccharomyces eubayanus</i>	Wyeast #1007 × yHKS210	This work
Identifier	Species	Genotype	Source/Comments
yHWA 451	<i>S. cerevisiae</i> / <i>S. eubayanus</i> / <i>S. kudriavzevii</i>	MATa/MATa/MATa/ MAT α /MAT α /MAT α [pHCT2][pHMK34]	putative hexaploid with PCR-RFLP confirmed Scer, Seub, and Skud genomes present; grown on SCGly to confirm respiration capability
yHWA 452	<i>S. cerevisiae</i> / <i>S. eubayanus</i> / <i>S. kudriavzevii</i>	MATa/MATa/MATa/ MAT α /MAT α /MAT α [pHCT2][pHMK34]	putative hexaploid with PCR-RFLP confirmed Scer, Seub, and Skud genomes present; grown on SCGly to confirm respiration capability
yHWA 453	<i>S. mikatae</i>	MATa/MAT α [pHCT2]	Contains pHCT2, transformed by and obtained from Ryan Moriarty
yHWA 454	<i>S. arboricola</i>	MATa/MAT α [pHMK34]	Contains pHMK34, transformed by and obtained from Ryan Moriarty
yHWA 455	<i>S. cerevisiae</i> / <i>S. eubayanus</i> / <i>S. kudriavzevii</i>	MATa/MATa/MATa/ MAT α /MAT α /MAT α	putative hexaploid hybrid between yHWA450 and yHWA354, presence of Scer Skud and Seub genomes confirmed with PCR-RFLP; cured of both plasmids
yHWA 456	<i>S. cerevisiae</i> / <i>S. eubayanus</i> / <i>S. kudriavzevii</i>	MATa/MATa/MATa/ MAT α /MAT α /MAT α	putative hexaploid hybrid between yHWA450 and yHWA354, presence of Scer Skud and Seub genomes confirmed with PCR-RFLP; cured of both plasmids
yHWA 457	<i>S. cerevisiae</i> / <i>S. eubayanus</i> / <i>S. kudriavzevii</i>	MATa/MATa/MATa/ MAT α /MAT α /MAT α [pHCT2]	putative hexaploid hybrid between yHWA450 and yHWA354, presence of Scer Skud and Seub genomes confirmed with PCR-RFLP
yHWA 458	<i>S. cerevisiae</i> / <i>S. eubayanus</i> / <i>S. kudriavzevii</i>	MATa/MATa/MATa/ MAT α /MAT α /MAT α [pHCT2]	putative hexaploid hybrid between yHWA450 and yHWA354, presence of Scer Skud and Seub genomes confirmed with PCR-RFLP
yHWA 459	<i>S. cerevisiae</i> / <i>S. eubayanus</i> / <i>S. kudriavzevii</i>	MATa/MATa/MATa/ MAT α /MAT α /MAT α [pHMK34]	putative hexaploid hybrid between yHWA450 and yHWA354, presence of Scer Skud and Seub genomes confirmed with PCR-RFLP
yHWA 460	<i>S. cerevisiae</i> / <i>S. eubayanus</i> / <i>S. kudriavzevii</i>	MATa/MATa/MATa/ MAT α /MAT α /MAT α [pHMK34]	putative hexaploid hybrid between yHWA450 and yHWA354, presence of Scer Skud and Seub genomes confirmed with PCR-RFLP
yHRVM 349	<i>S. cerevisiae</i>		yHAB335; Nat resistant
yHRVM 346	<i>S. paradoxus</i>		CBS432; Hyg resistant
yHRVM 359	<i>S. arboricola</i>		CBS 10644; Nat resistant
yHRVM 356	<i>S. uvarum</i>		yHCT77; Hyg resistant
yHDPN 405	<i>S. mikatae</i>		IFO1815; Hyg resistant
yHRVM 371	<i>S. kudriavzevii</i>		yHAB407; Nat resistant
yHRVM 456	<i>S. cerevisiae</i> × <i>S. paradoxus</i>		yHAB335 × CBS432; Nat + Hyg resistant; confirmed by RFLP

TABLE 1-continued

Strains used in this work		
yHRVM 461	<i>S. uvarum</i> × <i>S. arboricola</i>	yHCT77 × CBS 10644; Nat + Hyg resistant; confirmed by RFLP
yHRVM 501	<i>S. mikatae</i> × <i>S. kudriavzevii</i>	IFO1815 × yHAB407; Nat + Hyg resistant; confirmed by RFLP
yHRVM 495	<i>S. cerevisiae</i> × <i>S. paradoxus</i> × <i>S. uvarum</i> × <i>S. arboricola</i>	yHRVM491 (=yHRVM456 without [HYG]) × yHRVM492 (=yHRVM461 without [NAT]); confirmed by RFLP
yHRVM 548	<i>S. cerevisiae</i> × <i>S. paradoxus</i> × <i>S. uvarum</i> × <i>S. arboricola</i> × <i>S. mikatae</i> × <i>S. kudriavzevii</i>	yHRVM534 (=yHRVM501 without [HYG]) × yHRVM540 (=yHRVM495 without [NAT]); confirmed by RFLP

Saccharomyces Transformation

[0085] Transformation of yeast strains was done using the lithium acetate/PEG-4000/carrier DNA method as previously described (Gietz and Woods, 2002) with the following modifications: *S. cerevisiae* was heat shocked at 42° C. for 30 minutes, *S. uvarum* and *S. eubayanus* were heat shocked at 37° C. for 30 minutes, and *S. kudriavzevii* was heat shocked at 34° C. for 30 minutes. Cells were suspended in

YPD, followed by incubation at optimal temperature for three hours before being plated to selective media.

PCR Primers used in this work are found in Table 2. Plasmid components were amplified using the Phusion PCR Kit (New England Biolabs, Ipswich, Mass.) as directed by the product insert. Mating-type screening and PCR-RFLP analysis used the Standard Taq Polymerase (New England Biolabs, Ipswich, Mass.) system as directed by the product insert for amplification.

TABLE 2

Oligonucleotides used in this work.		
Name	Sequence	Use
MATa F	CTCCACTTCAAGTAAGAGTTTGGGT (SEQ ID NO: 1)	mating type screening
MATalpha F	TTACTCACAGTTTGGCTCCGGTGT (SEQ ID NO: 2)	mating type screening
Common MAT R	GAACCGCATGGGCAGTTTACCTTT (SEQ ID NO: 3)	mating type screening
oHDP022	TGATTATAGCCACGGGTGARATGTTYT (SEQ ID NO: 4)	amplifies fragment of BRE5 for PCR-RFLP analysis
oHDP023	TGATTATAGCCACKGGTGARATGTTTT (SEQ ID NO: 5)	amplifies fragment of BRE5 for PCR-RFLP analysis
oHDP024	TCTAKTCATCAAYTTTGAGGCCCATGT (SEQ ID NO: 6)	amplifies fragment of BRE5 for PCR-RFLP analysis
oHWA230	AAACGCTCCCCTCACAGACG (SEQ ID NO: 7)	amplifies MX-driven drug markers for marker exchange
oHWA231	CTGGGCAGATGATGTCGAGG (SEQ ID NO: 8)	amplifies MX-driven drug markers for marker exchange
CTH993	caaatacacacactaaattaccggatcaattcgg gggaAAAATGCTTTCTGAAAACACGA (SEQ ID NO: 9)	amplifies <i>S. cerevisiae</i> HO from YCp50-HO-D6, clones into pBM5155 over NotI site by gap repair
CTH994	cctccacctccaccgttaattaacccggggatcc ggcAGATGCGCGCACCT (SEQ ID NO: 10)	amplifies <i>S. cerevisiae</i> HO from YCp50-HO-D6, clones into pBM5155 over NotI site by gap repair

Construction of pBM5155, pHCT2, and pHMK34

[0086] pBM5155 (FIG. 4A) has been previously published and shown to facilitate the doxycycline-inducible gene expression in *S. cerevisiae* (Sabina and Johnston, 2009), but its sequence and the details of its construction by co-author CTH were not previously documented. pBM5155 was built using the backbone of pCM186 (Gari et al., 1997), which is a CEN plasmid containing all of the heterologous machinery for doxycycline-inducible expression of genes that are cloned into its NotI site, through several consecutive rounds of gap repair cloning in *S. cerevisiae*, followed by recovery and amplification in *Escherichia coli* by selection on LB +carbenicillin (or +ampicillin). Modifications of parts were introduced during PCR using oligonucleotides. The original rtTA transcription factor of pCM186, which is driven by a cytomegalovirus promoter, was excised and replaced with rtTA-M2 (Urlinger et al., 2000). The URA3 marker was replaced with a natMX4 marker (Goldstein and McCusker, 1999). An 8× glycine linker was added immediately downstream of the doxycycline-inducible promoter and immediately upstream of a 16× myc tag created from a 13× myc tag (Longtine et al., 1998) plus a 3× myc duplication created during gap repair. To improve stability in other yeast species, KARS101 from *Kluyveromyces lactis* (Fabiani et al., 2001) was added in addition to the *S. cerevisiae* CEN and ARS sequences already present. Modifications were made sequentially and confirmed by Sanger sequencing. The complete sequence of pBM5155 has been deposited in GenBank under accession KT725394.

[0087] pHCT2 (FIG. 4B) was built by PCR-amplifying *S. cerevisiae* HO using YCp50-HO-D6 (Russell et al., 1986) as a template, co-transforming that fragment with NotI-digested pBM5155 into *S. cerevisiae*, selecting on YPD+nat media, and recovering the resulting plasmid into *E. coli*. The natMX gene in pHCT2 was switched to the hphMX gene (Goldstein and McCusker, 1999) by amplifying the hph gene with oHWA230 and oHWA231, co-transforming the PCR product with AgeI-digested pHCT2 into *S. cerevisiae*, and selecting on YPD+hyg media. The resulting plasmid was recovered from yeast into bacteria, yielding pHMK34 (FIG. 4C). The sequence of pHCT2 was confirmed by 36-bp single-end Illumina sequencing, followed by assembly with VELVET (Zerbino and Birney, 2008). The manipulated region of pHMK34 was confirmed by PCR analysis and drug resistance. pHCT2 and pHMK34 sequences were deposited in GenBank under the accession numbers KT725395 and KT781077, respectively. Two additional plasmids, pHRW32 and pHRW40 with maps shown in FIG. 12 and sequences provided in SEQ ID NOs: 15 and 16 were also generated and have zeocin and G418 resistance to allow for further selection options. The pHRW40 plasmid is generally selected for on YPD plates with 400 ug/mL G418. The pHRW32 plasmid is generally selected for on YPD plates with 100 ug/mL Zeocin. In some cases, including for pHCT2 and pHMK34, drug concentrations must be optimized for the strains and species being used.

Induction of HO Expression and Mating

[0088] Plasmid-bearing cells were grown to saturation over 12-36 hours in 3 mL liquid YPD +drug. 1.5 mL of culture was discarded and replaced with 1.5 mL fresh liquid YPD+drug, and 3 µL of 10 mg/mL of filter-sterilized doxycycline dissolved in water was added. The culture was incubated for four hours to induce HO expression. Induced

cells were pelleted, washed with YPD, and 5 µL each of two separate induced cultures were mixed in an Eppendorf tube and patched to a small area of a YPD agar plate to allow mating between newly formed MATa/MATa or MATa/MATα diploids. After 12-36 hours of incubation, a small amount of the patch was struck to or plated on YPD+hyg+nat agar.

Determination of Ploidy Via Flow Cytometry

[0089] Overnight cultures of putative tetraploids were used to inoculate fresh YPD. These cultures were grown until cultures reached exponential phase, then fixed with 70% ethanol and stained with SYBR Green (Thermo Fisher Scientific, Waltham, Mass.) as previously described (Fortuna et al., 1997); due to possible degradation issues encountered with the normal fixation protocol, the NRRL YB-210 and Wyeast #1007 strains were not heated, nor were they treated with Proteinase K. DNA content was determined with a Guava easyCyte (EMD Millipore, Darmstadt, Germany). Data were processed, analyzed, and visualized in R 2.14.

Confirmation of Hybridization with PCR-Based RFLP

[0090] Putative tetraploid hybrids had their genomic DNA extracted, and BRE5 was amplified using primers oHDP022 (González et al., 2008), oHDP023, and oHDP024. Resulting PCR products were digested with HaeIII (New England Biolabs, Ipswich, Mass.). Undigested PCR products were visualized on a 1.5% agarose gel, while digested PCR products were visualized on a 3% agarose gel.

Results

Doxycycline-Inducible Expression of HO in *Saccharomyces*

[0091] pHCT2 was transformed into the stable haploid *S. cerevisiae* strain RM11-1a, and HO expression was induced with doxycycline. The induced culture was struck onto YPD+nat plates, and 47 colonies were screened by PCR of the mating-type locus (Gerstein et al., 2006); the Wyeast #1007 German Ale strain was included as a diploid control. 35 colonies produced bands consistent with the presence of both mating-type loci, while 12 colonies only produced one band from primers targeting MATα, the original mating type. The presence of both MATα and MATa are characteristic of a diploid cell, indicating that successful induction of HO by doxycycline, followed by mother-daughter or clonemate selfing, had occurred in the cell lineage to give rise to approximately 75% of the colonies (FIG. 5). Since HO was applied for an extended period of time during this experiment, rather than the normal tightly regulated process, it is formally possible (although highly unlikely) that a fraction of the remaining 25% of the cells could be MATα/MATα diploids rather than haploids.

Intraspecies Tetraploids are Selectable from Co-Cultured, HO-Induced Diploids

[0092] *S. cerevisiae* strains NRRL YB-210 and Ethanol Red are of biofuel interest due to their natural stress tolerance and routine use in ethanol production, respectively (Wohlbach et al., 2014). Strains containing pHMK34 and pHCT2 (Table 1), respectively, had HO expression induced with doxycycline and were co-cultured on YPD overnight at 30° C. The co-cultured patch was suspended in liquid YPD, and a 10⁻⁴ dilution was made with fresh YPD. 200 µL of dilution was plated onto each of three YPD+hyg+nat plates,

while 2 μ L was plated onto each of three YPD plates to estimate the frequency of hybridization (Table 3). We recovered an average of 9.67 double-drug-resistant tetraploids out of a calculated 6100 average viable cells per plate, or 0.158%. Flow cytometry of representative putative hybrids indicates DNA content consistent with tetraploidy when compared against known standards (FIG. 1A, FIG. 6). We note that induction of HO in diploids produces several possible genotypes by gene conversion, including MATa/MATa, MAT α /MAT α , and MATa/MAT α diploids, but the HyPr method is expected to only select for those progeny that result from the mating of MATa/MATa diploids with MAT α /MAT α diploids that contain complementary marked plasmids. The HyPr method does not control which mating type is contributed by which parent.

TABLE 3

Recovery of double-drug-resistant colonies from induced, co-cultured <i>S. cerevisiae</i> strains		
Replicate	YPD + hyg + nat	YPD ¹
A	12	5200
B	7	6900
C	10	6200
Mean \pm SD	9.67 \pm 2.52	6100 \pm 850

¹Total YPD colonies were calculated from actual colony counts using dilution factors.

Interspecies Tetraploids are Selectable from Co-Cultured, HO-Induced Diploids

[0093] A German Ale strain of *S. cerevisiae* was transformed with pHCT2, while strains of *S. kudrivzevii*, *S. uvarum*, and *S. eubayanus* were transformed with pHMK34 (Table 1). HO expression was induced with doxycycline, and strains possessing complementary plasmids were co-cultured on YPD for up to 36 hours at room temperature. Patches were struck to YPD+hyg +nat, and resulting single double-drug-resistant colonies were grown in liquid YPD. Flow cytometry indicated a DNA content consistent with tetraploidy (FIG. 1B-D, FIG. 6), and PCR-RFLP analysis confirmed these strains were hybrids between *S. cerevisiae* and the intended *Saccharomyces* species (FIG. 2).

Plasmids are Rapidly Lost in Non-Selective Media

[0094] A saturated liquid non-selective culture of yHWA425, the synthetic *S. cerevisiae*×*S. eubayanus* hybrid (Table 1), was diluted 10⁻⁴, and 1 μ L was plated onto each of three YPD plates. After incubation at room temperature for two days, these plates were replicated to YPD +hyg and YPD+nat plates. 54.9% of colonies lost pHMK34, while 63.8% of colonies lost pHCT2. Some colonies grew on YPD and were sensitive to both drugs (FIG. 7). These colonies were harvested from the YPD plate and were successfully struck for single colonies on YPD but not on YPD+hyg and YPD+nat (yHWA439), indicating that plasmid-free interspecies hybrids containing unmarked nuclear genomes can be readily obtained by this method.

[0095] pHCT2 and pHMK34 function similarly to previously constructed vectors that drive HO expression with the galactose-inducible promoter of GAL1 (Jensen and Herskowitz, 1984) and are valuable tools for researchers working with stable haploid prototrophic strains of *Saccharomyces*. More interestingly, pHCT2 and pHMK34 can be used together in a method called HyPr, which produces allotetraploid and autotetraploid *Saccharomyces* yeasts (FIG. 3).

The HyPr success rate is high (around 1 out of 1000 plated cells) relative to the corresponding rate of rare mating between two diploids in a population, which has been estimated to be between 1 out of 1 million to 100 million cells (Gunge and Nakatomi, 1972). Moreover, the complementary markers on the plasmids themselves also provide the means to easily select allotetraploids. The high success rate, the ease of use in prototrophs, the lack of permanent genomic modification, and the capability of plasmid loss together make HyPr the ideal method for production of new designer hybrid strains for industrial fermentations, such as beer, wine, cider, and biofuel production. To introduce the utility of this approach, we have created novel *S. cerevisiae*×*S. eubayanus*, *S. cerevisiae*×*S. kudrivzevii*, and *S. cerevisiae*×*S. uvarum* strains, which are designed as synthetic lager, Belgian, and cider strains, respectively. We also created novel allohexaploid strains of *S. cerevisiae*×*S. eubayanus*×*S. kudrivzevii*, as well as six-species hybrids of *S. cerevisiae*×*S. paradoxus*×*S. arboricola*×*S. uvarum*×*S. kudrivzevii*×*S. mikatae* inferred to have 12 sets of chromosomes.

[0096] HyPr may also provide an alternative method for optimization via hybridization of *Saccharomyces* chassis strains to be used in a variety of synthetic biology applications. Selection of an appropriate chassis strain prior to the installation of genetic and metabolic modifications is a sound strategy, but prior work has often focused on screening existing strain libraries to find a chassis strain that fit a set of criteria (Jin et al., 2013). The meiotic sterility of many industrial strains of interest complicates the production of new *Saccharomyces* chassis strains because many strains do not produce viable spores. HyPr can be used to create chassis strains de novo from two strains with desirable traits, producing a new chassis strain with both desired characteristics without sporulation. As with a previous case where HO was induced in a sterile strain whose genome was predominantly *S. uvarum* (Schwartz et al., 2012), HyPr is expected to even enable hybridization of strains whose defect is in sporulation or chromosome segregation, rather than mating per se. This new chassis strain could then undergo optimization via selective conditions, further enhancing desired phenotypes of the chassis strain through aneuploidy and other mutations or through modification using various genome-editing techniques (Alexander et al., 2014; DiCarlo et al., 2013; Ryan et al., 2014).

[0097] Chassis strains made by HyPr lack drug markers and auxotrophies, both of which are desirable qualities in beverage and biofuel strains. Note that, while integration of any portion of the plasmid into the *Saccharomyces* genome is highly unlikely, it is formally possible that fragments of the plasmid could have integrated and conferred no detectable phenotype. Depending on the desired applications and safety regulations, any hybrids made using HyPr could have their genomes sequenced to ensure that all plasmid DNA had been eliminated from the strain, or other routine molecular approaches, such as PCR or Southern blots, could be taken to verify the absence of specific parts of the plasmid that were of concern.

[0098] Extensive prior work has shown that *S. cerevisiae* autotetraploid strains are relatively unstable, rapidly losing chromosomes to form aneuploid strains (Storchova, 2014). This loss occurs rapidly with genome content reduction to near-diploid levels in 200 to 800 generations (Gerstein et al., 2006). We expect autotetraploids made via HyPr to behave

in a similar manner. This could, in fact, be a desirable trait for many applications, as placing an unstable tetraploid strain in a selective condition will influence which components of the genome are retained or lost from which parent, allowing for more rapid adaptation to that condition (Selmecki et al., 2015). Allopolyploids between *Saccharomyces* species have been identified from many different sources, including the isolation of lager beer strains (Dunn and Sherlock, 2008; Nakao et al., 2009; Walther et al., 2014). The reduction of genomic components has been observed in many cases. For example, *S. cerevisiae*×*S. kudriavzevii* hybrids isolated from brewing environments have selectively lost components of the *S. kudriavzevii* genome (Penis et al., 2012c), while certain *S. cerevisiae*×*S. eubayanus* hybrids used in lager beer production have lost whole *S. cerevisiae* chromosomes (Walther et al., 2014). We expect that allotetraploids made by HyPr will also evolve aneuploidy given enough time, but again, many of these aneuploidies may be advantageous in the conditions where they are evolved. A recent evolution experiment using interspecies hybrids demonstrated that genomic stability was reached within 30-50 generations (Pérez-Través et al., 2014a). Even though allopolyploid strains are less stable than diploid *Saccharomyces* strains, we note that the allopolyploid strains that form the backbone of the brewing industry are sufficiently stable for routine application in large-scale fermentations.

[0099] Finally, interspecies hybrids are also useful to address a variety of basic research questions in genetics and evolutionary biology. For example, interspecies hybrids have been especially useful for examining the relative effects of cis and trans variation on gene expression (Bullard et al., 2010; Swain Lenz et al., 2014; Tirosh et al., 2009; Wittkopp et al., 2004). In *Saccharomyces*, these studies have traditionally mated haploids with integrated complementary markers to make F_1 diploid hybrids. Our plasmid-based strategy may be preferable in strain backgrounds where gene targeting is inefficient or for high-throughput experiments. When diploidy is required, allotetraploid *Saccharomyces* that have not yet evolved aneuploidy or sterility can readily be sporulated readily to recover diploids (Greig et al., 2002; Gunge, 1966). In conclusion, this straightforward, robust approach allows the efficient construction of designer hybrids of *Saccharomyces* allotetraploids and autotetraploids, as well as strains with higher order ploidy, for numerous basic and applied uses.

REFERENCES

- [0100]** Alexander, W. G., Doering, D. T., Hittinger, C. T., 2014. High-efficiency genome editing and allele replacement in prototrophic and wild strains of *Saccharomyces*. *Genetics* 198, 859-866. doi:10.1534/genetics.114.170118
- [0101]** Almeida, P., Gonçalves, C., Teixeira, S., Libkind, D., Bontrager, M., Masneuf-Pomarède, I., Albertin, W., Durrens, P., Sherman, D. J., Marullo, P., Hittinger, C. T., Gonçalves, P., Sampaio, J. P., 2014. A Gondwanan imprint on global diversity and domestication of wine and cider yeast *Saccharomyces uvarum*. *Nat. Commun.* 5, 4044. doi:10.1038/ncomms5044
- [0102]** Baker, E., Wang, B., Bellora, N., Peris, D., Hulfachor, A. B., Koshalek, J. A., Adams, M., Libkind, D., Hittinger, C. T., 2015. The genome sequence of *Saccharomyces eubayanus* and the domestication of lager-brewing yeasts. *Mol. Biol. Evol.* msv168-. doi:10.1093/molbev/msv168
- [0103]** Bardwell, L., 2004. A walk-through of the yeast mating pheromone response pathway. *Peptides* 25, 1465-1476. doi:10.1016/j.peptides.2003.10.022
- [0104]** Bing, J., Han, P.-J., Liu, W.-Q., Wang, Q.-M., Bai, F.-Y., 2014. Evidence for a Far East Asian origin of lager beer yeast. *Curr. Biol.* 24, R380-1. doi:10.1016/j.cub.2014.04.031
- [0105]** Brem, R. B., Yvert, G., Clinton, R., Kruglyak, L., 2002. Genetic dissection of transcriptional regulation in budding yeast. *Science* 296, 752-755. doi:10.1126/science.1069516
- [0106]** Bullard, J. H., Mostovoy, Y., Dudoit, S., Brem, R. B., 2010. Polygenic and directional regulatory evolution across pathways in *Saccharomyces*. *Proc. Natl. Acad. Sci. U.S.A* 107, 5058-63. doi:10.1073/pnas.0912959107
- [0107]** Casselton, L. A., Olesnick, N. S., 1998. Molecular genetics of mating recognition in basidiomycete fungi. *Microbiol. Mol. Biol. Rev.* 62, 55-70.
- [0108]** Corran, H. S., 1975. A history of brewing. David & Charles.
- [0109]** DiCarlo, J. E., Norville, J. E., Mali, P., Rios, X., Aach, J., Church, G. M., 2013. Genome engineering in *Saccharomyces cerevisiae* using CRISPR-Cas systems. *Nucleic Acids Res.* 41, 4336-43. doi:10.1093/nar/gkt135
- [0110]** Dunn, B., Sherlock, G., 2008. Reconstruction of the genome origins and evolution of the hybrid lager yeast *Saccharomyces pastorianus*. *Genome Res.* 18, 1610-1623. doi:10.1101/gr.076075.108
- [0111]** Fabiani, L., Irene, C., Aragona, M., Newlon, C. S., 2001. A DNA replication origin and a replication fork barrier used in vivo in the circular plasmid pKD1. *Mol. Genet. Genomics* 266, 326-35.
- [0112]** Fortuna, M., Joao Sousa, M., Corte-Real, M., Leao, C., 1997. UNIT 11.13 Cell cycle analysis of yeasts, in: *Current Protocols in Cytometry*.
- [0113]** Frank-Vaillant, M., Marcand, S., 2001. NHEJ regulation by mating type is exercised through a novel protein, Lif2p, essential to the ligase IV pathway. *Genes Dev.* 15, 3005-12. doi:10.1101/gad.206801
- [0114]** Gari, E., Piedrafit, L., Aldea, M., Herrero, E., 1997. A set of vectors with a tetracycline-regulatable promoter system for modulated gene expression in *Saccharomyces cerevisiae*.
- [0115]** Yeast 13, 837-48. doi:10.1002/(SICI)1097-0061(199707)13:9<837::AID-YEA145>3.0.CO;2-T
- [0116]** Gerstein, A. C., Chun, H.-J. E., Grant, A., Otto, S. P., 2006. Genomic convergence toward diploidy in *Saccharomyces cerevisiae*. *PLoS Genet.* 2, e145. doi:10.1371/journal.pgen.0020145
- [0117]** Gietz, R. D., Woods, R. A., 2002. Transformation of yeast by lithium acetate/single-stranded carrier DNA/polyethylene glycol method. *Methods Enzymol.* 350, 87-96.
- [0118]** Glass, N. L., Grotelueschen, J., Metzberg, R. L., 1990. *Neurospora crassa* A mating-type region. *Proc. Natl. Acad. Sci. U.S.A* 87, 4912-4916.
- [0119]** Glass, N. L., Jacobson, D. J., Shiu, P. K. T., 2000. The genetics of hyphal fusion and vegetative incompatibility in filamentous ascomycete fungi. *Annu. Rev. Genet.* 34, 165-186.

- [0120] Goldstein, A. L., McCusker, J. H., 1999. Three new dominant drug resistance cassettes for gene disruption in *Saccharomyces cerevisiae*. *Yeast* 15, 1541-53. doi:10.1002/(SICI)1097-0061(199910)15:14<1541::AID-YEA476>3.0.CO;2-K
- [0121] González, S. S., Barrio, E., Querol, A., 2008. Molecular characterization of new natural hybrids of *Saccharomyces cerevisiae* and *S. kudriavzevii* in brewing. *Appl. Environ. Microbiol.* 74, 2314-2320. doi:10.1128/AEM.01867-07
- [0122] Greig, D., Borts, R. H., Louis, E. J., Travisano, M., 2002. Epistasis and hybrid sterility in *Saccharomyces*. *Proc. Biol. Sci.* 269, 1167-71. doi:10.1098/rspb.2002.1989
- [0123] Gunge, N., 1966. Breeding of bakers' yeast-Determination of the ploidy and an attempt to improve practical properties. *Japanese J. Genet.* 41, 203-214. doi:10.1266/jjg.41.203
- [0124] Gunge, N., Nakatomi, Y., 1972. Genetic mechanisms of rare matings of the yeast *Saccharomyces cerevisiae* heterozygous for mating type. *Genetics* 70, 41-58.
- [0125] Haber, J. E., 2012. Mating-type genes and MAT switching in *Saccharomyces cerevisiae*. *Genetics* 191, 33-64. doi:10.1534/genetics.111.134577
- [0126] Hebly, M., Brickwedde, A., Bolat, I., Driessen, M. R. M., de Hulster, E. A. F., van den Broek, M., Pronk, J. T., Geertman, J.-M., Daran, J.-M., Daran-Lapujade, P., 2015. *S. cerevisiae* x *S. eubayanus* interspecific hybrid, the best of both worlds and beyond. *FEMS Yeast Res.* 15. doi:10.1093/femsyr/fov005
- [0127] Herskowitz, I., Jensen, R. E., 1991. Putting the HO gene to work: practical uses for mating-type switching. *Methods Enzymol.* 194, 132-46.
- [0128] Hittinger, C. T., 2013. *Saccharomyces* diversity and evolution: a budding model genus. *Trends Genet.* 29, 309-17. doi:10.1016/j.tig.2013.01.002
- [0129] Hittinger, C. T., Gonçalves, P., Sampaio, J. P., Dover, J., Johnston, M., Rokas, A., 2010. Remarkably ancient balanced polymorphisms in a multi-locus gene network. *Nature* 464, 54-8. doi:10.1038/nature08791
- [0130] Husnik, J. I., Volschenk, H., Bauer, J., Colavizza, D., Luo, Z., van Vuuren, H. J. J., 2006. Metabolic engineering of malolactic wine yeast. *Metab. Eng.* 8, 315-23. doi:10.1016/j.ymben.2006.02.003
- [0131] Jensen, R. E., Herskowitz, I., 1984. Directionality and regulation of cassette substitution in yeast. *Cold Spring Harb. Symp. Quant. Biol.* 49, 97-104. doi:10.1101/SQB.1984.049.01.013
- [0132] Jin, M., Sarks, C., Gunawan, C., Bice, B. D., Simonett, S. P., Avanasani Narasimhan, R., Willis, L. B., Dale, B. E., Balan, V., Sato, T. K., 2013. Phenotypic selection of a wild *Saccharomyces cerevisiae* strain for simultaneous saccharification and co-fermentation of AFEX™ pretreated corn stover. *Biotechnol. Biofuels* 6, 108. doi:10.1186/1754-6834-6-108
- [0133] John, B., 1990. Meiosis, Developmental and Cell Biology Series.
- [0134] Kohl, K. P., Sekelsky, J., 2013. Meiotic and mitotic recombination in meiosis. *Genetics* 194, 327-34. doi:10.1534/genetics.113.150581
- [0135] Krogerus, K., Magalhaes, F., Vidgren, V., Gibson, B., 2015. New lager yeast strains generated by interspecific hybridization. *J. Ind. Microbiol. Biotechnol.* 42, 769-78. doi:10.1007/s10295-015-1597-6
- [0136] Kronstad, J. W., Staben, C., 1997. Mating type in filamentous fungi. *Annu. Rev. Genet.* 31, 245-76. doi:10.1146/annurev.genet.31.1.245
- [0137] Le Jeune, C., Lollier, M., Demuyter, C., Erny, C., Legras, J.-L., Aigle, M., Masneuf-Pomarède, I., 2007. Characterization of natural hybrids of *Saccharomyces cerevisiae* and *Saccharomyces bayanus* var. *uvarum*. *FEMS Yeast Res.* 7, 540-9. doi:10.1111/j.1567-1364.2007.00207.x
- [0138] Leducq, J.-B., Charron, G., Samani, P., Dubé, A. K., Sylvestre, K., James, B., Almeida, P., Sampaio, J. P., Hittinger, C. T., Bell, G., Landry, C. R., 2014. Local climatic adaptation in a widespread microorganism. *Proc. Biol. Sci.* 281, 20132472. doi:10.1098/rspb.2013.2472
- [0139] Libkind, D., Hittinger, C. T., Valério, E., Gonçalves, C., Dover, J., Johnston, M., Gonçalves, P., Sampaio, J. P., 2011. Microbe domestication and the identification of the wild genetic stock of lager-brewing yeast. *Proc. Natl. Acad. Sci. U.S.A* 108, 14539-44. doi:10.1073/pnas.1105430108
- [0140] Liti, G., Carter, D. M., Moses, A. M., Warringer, J., Parts, L., James, S. a, Davey, R. P., Roberts, I. N., Burt, A., Koufopanou, V., Tsai, U., Bergman, C. M., Bensasson, D., O'Kelly, M. J. T., van Oudenaarden, A., Barton, D. B. H., Bailes, E., Nguyen, A. N., Jones, M., Quail, M. a, Goodhead, I., Sims, S., Smith, F., Blomberg, A., Durbin, R., Louis, E. J., 2009. Population genomics of domestic and wild yeasts. *Nature* 458, 337-41. doi:10.1038/nature07743
- [0141] Liti, G., Peruffo, A., James, S. a, Roberts, I. N., Louis, E. J., 2005. Inferences of evolutionary relationships from a population survey of LTR-retrotransposons and telomeric-associated sequences in the *Saccharomyces sensu stricto* complex. *Yeast* 22, 177-92. doi:10.1002/yea.1200
- [0142] Longtine, M. S., McKenzie III, A., Demarini, D. J., Shah, N. G., Wach, A., Brachat, A., Philippsen, P., Pringle, J. R., 1998. Additional modules for versatile and economical PCR-based gene deletion and modification in *Saccharomyces cerevisiae*. *Yeast* 14, 953-961.
- [0143] Maclean, C. J., Greig, D., 2008. Prezygotic reproductive isolation between *Saccharomyces cerevisiae* and *Saccharomyces paradoxus*. *BMC Evol. Biol.* 8, 1. doi:10.1186/1471-2148-8-1
- [0144] Masneuf, I., Hansen, J., Groth, C., Piskur, J., Dubourdieu, D., 1998. New hybrids between *Saccharomyces sensu stricto* yeast species found among wine and cider production strains. *Appl. Environ. Microbiol.* 64, 3887-3892.
- [0145] Mortimer, R. K., 2000. Evolution and variation of the yeast (*Saccharomyces*) genome. *Genome Res.* 10, 403-409. doi:10.1101/gr.10.4.403
- [0146] Mortimer, R. K., Johnston, J. R., 1986. Genealogy of principal strains of the yeast genetic stock center. *Genetics* 113, 35-43.
- [0147] Nakao, Y., Kanamori, T., Itoh, T., Kodama, Y., Rainieri, S., Nakamura, N., Shimonaga, T., Hattori, M., Ashikari, T., 2009. Genome sequence of the lager brewing yeast, an interspecies hybrid. *DNA Res.* 16, 115-29. doi:10.1093/dnares/dsp003
- [0148] Pérez-Través, L., Lopes, C. A., Barrio, E., Querol, A., 2014a. Stabilization process in *Saccharomyces* intra and interspecific hybrids in fermentative conditions. *Int. Microbiol.* 17, 213-24. doi:10.2436/20.1501.01.224

- [0149] Pérez-Través, L., Lopes, C. A., Barrio, E., Querol, A., 2012. Evaluation of different genetic procedures for the generation of artificial hybrids in *Saccharomyces* genus for winemaking. *Int. J. Food Microbiol.* 156, 102-11. doi:10.1016/j.jfoodmicro.2012.03.008
- [0150] Pérez-Través, L., Lopes, C. A., Querol, A., Barrio, E., 2014b. On the complexity of the *Saccharomyces bayanus* taxon: hybridization and potential hybrid speciation. *PLoS One* 9, e93729. doi:10.1371/journal.pone.0093729
- [0151] Peris, D., Belloch, C., Lopandić, K., Álvarez-Pérez, J. M., Querol, A., Barrio, E., 2012a. The molecular characterization of new types of *Saccharomyces cerevisiae* × *S. kudriavzevii* hybrid yeasts unveils a high genetic diversity. *Yeast* 29, 81-91. doi:10.1002/yea.2891
- [0152] Peris, D., Lopes, C. A., Arias, A., Barrio, E., 2012b. Reconstruction of the evolutionary history of *Saccharomyces cerevisiae* × *S. kudriavzevii* hybrids based on multilocus sequence analysis. *PLoS One* 7, e45527. doi:10.1371/journal.pone.0045527
- [0153] Peris, D., Lopes, C. A., Belloch, C., Querol, A., Barrio, E., 2012c. Comparative genomics among *Saccharomyces cerevisiae* × *Saccharomyces kudriavzevii* natural hybrid strains isolated from wine and beer reveals different origins. *BMC Genomics*. doi:10.1186/1471-2164-13-407
- [0154] Peris, D., Sylvester, K., Libkind, D., Gonçalves, P., Sampaio, J. P., Alexander, W. G., Hittinger, C. T., 2014. Population structure and reticulate evolution of *Saccharomyces eubayanus* and its lager-brewing hybrids. *Mol. Ecol.* 23, 2031-45. doi:10.1111/mec.12702
- [0155] Piatkowska, E. M., Naseeb, S., Knight, D., Delneri, D., 2013. Chimeric protein complexes in hybrid species generate novel phenotypes. *PLoS Genet.* 9, e1003836. doi:10.1371/journal.pgen.1003836
- [0156] Piotrowski, J. S., Nagarajan, S., Kroll, E., Stanbery, A., Chiotti, K. E., Kruckeberg, A. L., Dunn, B., Sherlock, G., Rosenzweig, F., 2012. Different selective pressures lead to different genomic outcomes as newly-formed hybrid yeasts evolve. *BMC Evol. Biol.* 12, 46. doi:10.1186/1471-2148-12-46
- [0157] Russell, D. W., Jensen, R., Zoller, M. J., Burke, J., Errede, B., Smith, M., Herskowitz, I., 1986. Structure of the *Saccharomyces cerevisiae* HO gene and analysis of its upstream regulatory region. *Mol. Cell. Biol.* 6, 4281-94.
- [0158] Ryan, O. W., Skerker, J. M., Maurer, M. J., Li, X., Tsai, J. C., Poddar, S., Lee, M. E., DeLoache, W., Dueber, J. E., Arkin, A. P., Cate, J. H. D., 2014. Selection of chromosomal DNA libraries using a multiplex CRISPR system. *Elife* e03703. doi:10.7554/eLife.03703
- [0159] Sabina, J., Johnston, M., 2009. Asymmetric signal transduction through paralogs that comprise a genetic switch for sugar sensing in *Saccharomyces cerevisiae*. *J. Biol. Chem.* 284, 29635-29643. doi:10.1074/jbc.M109.032102
- [0160] Sampaio, J. P., Gonçalves, P., 2008. Natural populations of *Saccharomyces kudriavzevii* in Portugal are associated with oak bark and are sympatric with *S. cerevisiae* and *S. paradoxus*. *Appl. Environ. Microbiol.* 74, 2144-2152. doi:10.1128/AEM.02396-07
- [0161] Scannell, D. R., Zill, O. A., Rokas, A., Payen, C., Dunham, M. J., Eisen, M. B., Rine, J., Johnston, M., Hittinger, C. T., 2011. The awesome power of yeast evolutionary genetics: new genome sequences and strain resources for the *Saccharomyces sensu stricto* genus. *G3* 1, 11-25. doi:10.1534/g3.111.000273
- [0162] Schwartz, K., Wenger, J. W., Dunn, B., Sherlock, G., 2012. APJ1 and GRE3 homologs work in concert to allow growth in xylose in a natural *Saccharomyces sensu stricto* hybrid yeast. *Genetics* 191, 621-32. doi:10.1534/genetics.112.140053
- [0163] Selmecki, A. M., Maruvka, Y. E., Richmond, P. A., Guillet, M., Shores, N., Sorenson, A. L., De, S., Kishony, R., Michor, F., Dowell, R., Pellman, D., 2015. Polyploidy can drive rapid adaptation in yeast. *Nature* 519, 349-52. doi:10.1038/nature14187
- [0164] Staben, C., Yanofsky, C., 1990. *Neurospora crassa* a mating-type region. *Proc. Natl. Acad. Sci. U.S.A* 87, 4917-21.
- [0165] Storchova, Z., 2014. Ploidy changes and genome stability in yeast. *Yeast* 31, 421-30. doi:10.1002/yea.3037
- [0166] Swain Lenz, D., Riles, L., Fay, J. C., 2014. Heterochronic meiotic misexpression in an interspecific yeast hybrid. *Mol. Biol. Evol.* 31, 1333-1342. doi:10.1093/molbev/msu098
- [0167] Tirosh, I., Reikhav, S., Levy, A. A., Barkai, N., 2009. A yeast hybrid provides insight into the evolution of gene expression regulation. *Science* 324, 659-62. doi:10.1126/science.1169766
- [0168] Urlinger, S., Baron, U., Thellmann, M., Hasan, M. T., Bujard, H., Hillen, W., 2000. Exploring the sequence space for tetracycline-dependent transcriptional activators: novel mutations yield expanded range and sensitivity. *Proc. Natl. Acad. Sci. U.S.A* 97, 7963-8. doi:10.1073/pnas.130192197
- [0169] Van Heeckeren, W. J., Dorris, D. R., Struhl, K., 1998. The mating-type proteins of fission yeast induce meiosis by directly activating *mei3* transcription. *Mol. Cell. Biol.* 18, 7317-26.
- [0170] Walker, M. E., Gardner, J. M., Vystavelova, A., McBryde, C., Lopes, M. D. B., Jiranek, V., 2003. Application of the reusable, KanMX selectable marker to industrial yeast: Construction and evaluation of heterothallic wine strains of *Saccharomyces cerevisiae*, possessing minimal foreign DNA sequences. *FEMS Yeast Res.* 4, 339-347. doi:10.1016/S1567-1356(03)00161-2
- [0171] Walther, A., Hesselbart, A., Wendland, J., 2014. Genome sequence of *Saccharomyces carlsbergensis*, the world's first pure culture lager yeast. *G3* 4, 783-793. doi:10.1534/g3.113.010090
- [0172] Wang, Q.-M., Liu, W.-Q., Liti, G., Wang, S.-A., Bai, F.-Y., 2012. Surprisingly diverged populations of *Saccharomyces cerevisiae* in natural environments remote from human activity. *Mol. Ecol.* 21, 5404-17. doi:10.1111/j.1365-294X.2012.05732.x
- [0173] Wittkopp, P. J., Haerum, B. K., Clark, A. G., 2004. Evolutionary changes in cis and trans gene regulation. *Nature* 430, 85-8. doi:10.1038/nature02698
- [0174] Wohlbach, D. J., Rovinskiy, N., Lewis, J. A., Sardi, M., Schackwitz, W. S., Martin, J. A., Deshpande, S., Daum, C. G., Lipzen, A., Sato, T. K., Gasch, A. P., 2014. Comparative genomics of *Saccharomyces cerevisiae* natural isolates for bioenergy production. *Genome Biol. Evol.* 6, 2557-66.
- [0175] Zerbino, D. R., Birney, E., 2008. Velvet: algorithms for de novo short read assembly using de Bruijn graphs. *Genome Res.* 18, 821-9. doi:10.1101/gr.074492.107

Example 2—Generation of Higher Order Polyploid Synthetic Yeast Cells

[0176] Hybrid strain yHWA425 (*S. cerevisiae*×*S. eubayanus*) was passaged as described above such that it lost pHMK34 but retained pHCT2 (i.e. screening for nourseothricin-resistant but hygromycin-sensitive colonies by replica-plating). Strain yHWA425 was then crossed to strain yHWA354 (*S. kudriavzevii*), and triple hybrids resistant to both nourseothricin and hygromycin were selected using the protocols described above to generate allohexaploid strains yHWA451 and yHWA452 (*S. cerevisiae*×*S. eubayanus*×*S. kudriavzevii*). See Table 1. These triple hybrids were then passaged as described above such that both plasmids were lost, yielding yHWA455 and yHWA456 (*S. cerevisiae*×*S. eubayanus*×*S. kudriavzevii*). See Table 1. PCR and Restriction Fragment Long Polymorphism (RFLP) were used to confirm the presence of three different genomes (*S. cerevisiae*×*S. kudriavzevii*×*S. eubayanus*) in a synthetic higher ploidy hybrid (likely an allohexaploid) as shown in FIG. 8. The BRE5 PCR product was digested with HaeIII producing a pattern for each species contributing to this gene/genome, as described in FIG. 2 above.

[0177] In addition to the hybrids described above, we were able to make higher order hybrids and have demonstrated both four and six species hybrids. These higher order

hybrids were generated by taking two species hybrids such as those made above and further combining them. We generated several two-species hybrids, including *S. cerevisiae*×*S. paradoxus*, *S. arboricola* ×*S. uvarum* and *S. mikatae*×*S. kudriavzevii*. Two of these two-species hybrids were then crossed and a four-species hybrid was selected. The four-species hybrid was confirmed by Illumina sequencing and analysis (as previously described in Peris et al. 2017 Biotechnol Biofuels 10:78) by comparison to the parents as shown in FIG. 9. As shown in FIG. 10, the four-species hybrid is a hybrid containing genetic material from *S. cerevisiae*, *S. paradoxus*, *S. arboricola*, *S. uvarum*. This four-species hybrid (*S. cerevisiae*×*S. paradoxus*×*S. arboricola*×*S. uvarum*) was then crossed with the two-species hybrid (*S. mikatae*×*S. kudriavzevii*) and a six-species hybrid was selected for and screened using Restriction Fragment Length Polymorphism analysis as shown in FIG. 11B to demonstrate that the hybrid was a 6-species hybrid (*S. cerevisiae*×*S. paradoxus*×*S. arboricola*×*S. uvarum*×*S. mikatae*×*S. kudriavzevii*). A photograph showing the diverse morphology of the 6 species hybrid is provided as FIG. 11A. This suggest chromosome instability, but work is continuing to demonstrate the variation within and ability to select for traits from these higher order hybrids. Thus, higher order hybrids can be made using the techniques described herein.

SEQUENCE LISTING

<160> NUMBER OF SEQ ID NOS: 16

<210> SEQ ID NO 1
<211> LENGTH: 25
<212> TYPE: DNA
<213> ORGANISM: Artificial Sequence
<220> FEATURE:
<223> OTHER INFORMATION: Synthetic: MATa F primer

<400> SEQUENCE: 1

ctccacttca agtaagagtt tgggt

25

<210> SEQ ID NO 2
<211> LENGTH: 24
<212> TYPE: DNA
<213> ORGANISM: Artificial Sequence
<220> FEATURE:
<223> OTHER INFORMATION: Synthetic: MATalpha F primer

<400> SEQUENCE: 2

ttactcacag ttggtccg gtgt

24

<210> SEQ ID NO 3
<211> LENGTH: 24
<212> TYPE: DNA
<213> ORGANISM: Artificial Sequence
<220> FEATURE:
<223> OTHER INFORMATION: Synthetic: Common MAT R primer

<400> SEQUENCE: 3

gaaccgcatg ggcagtttac cttt

24

<210> SEQ ID NO 4
<211> LENGTH: 27
<212> TYPE: DNA
<213> ORGANISM: Artificial Sequence

-continued

<220> FEATURE:
<223> OTHER INFORMATION: Synthetic: oHDP022 primer

<400> SEQUENCE: 4

tgattatagc cacgggtgar atgttyt 27

<210> SEQ ID NO 5
<211> LENGTH: 27
<212> TYPE: DNA
<213> ORGANISM: Artificial Sequence
<220> FEATURE:
<223> OTHER INFORMATION: Synthetic: oHDP023 primer

<400> SEQUENCE: 5

tgattatagc cackggtgar atgtttt 27

<210> SEQ ID NO 6
<211> LENGTH: 27
<212> TYPE: DNA
<213> ORGANISM: Artificial Sequence
<220> FEATURE:
<223> OTHER INFORMATION: Synthetic: oHDP024 primer

<400> SEQUENCE: 6

ttcaktcatc aaytttgagg cccatgt 27

<210> SEQ ID NO 7
<211> LENGTH: 20
<212> TYPE: DNA
<213> ORGANISM: Artificial Sequence
<220> FEATURE:
<223> OTHER INFORMATION: Synthetic: oHWA230 primer

<400> SEQUENCE: 7

aaacgctccc ctcacagacg 20

<210> SEQ ID NO 8
<211> LENGTH: 20
<212> TYPE: DNA
<213> ORGANISM: Artificial Sequence
<220> FEATURE:
<223> OTHER INFORMATION: Synthetic: oHWA231 primer

<400> SEQUENCE: 8

ctgggcagat gatgtcgagg 20

<210> SEQ ID NO 9
<211> LENGTH: 60
<212> TYPE: DNA
<213> ORGANISM: Artificial Sequence
<220> FEATURE:
<223> OTHER INFORMATION: Synthetic: CTH993 primer

<400> SEQUENCE: 9

caaatacaca cactaaatta ccggatcaat tcgggggaaa aatgctttct gaaaacacga 60

<210> SEQ ID NO 10
<211> LENGTH: 51
<212> TYPE: DNA
<213> ORGANISM: Artificial Sequence
<220> FEATURE:
<223> OTHER INFORMATION: Synthetic: CTH994 primer

<400> SEQUENCE: 10

-continued

cctccacctc caccgttaat taaccggggg atccggcaga tgcgcgcacc t 51

<210> SEQ ID NO 11
<211> LENGTH: 586
<212> TYPE: PRT
<213> ORGANISM: *Saccharomyces cerevisiae*
<220> FEATURE:
<221> NAME/KEY: misc_feature
<222> LOCATION: (1)..(586)
<223> OTHER INFORMATION: *Saccharomyces cerevisiae* HO protein

<400> SEQUENCE: 11

Met Leu Ser Glu Asn Thr Thr Ile Leu Met Ala Asn Gly Glu Ile Lys
1 5 10 15
Asp Ile Ala Asn Val Thr Ala Asn Ser Tyr Val Met Cys Ala Asp Gly
20 25 30
Ser Ala Ala Arg Val Ile Asn Val Thr Gln Gly Tyr Gln Lys Ile Tyr
35 40 45
Asn Ile Gln Gln Lys Thr Lys His Arg Ala Phe Glu Gly Glu Pro Gly
50 55 60
Arg Leu Asp Pro Arg Arg Arg Thr Val Tyr Gln Arg Leu Ala Leu Gln
65 70 75 80
Cys Thr Ala Gly His Lys Leu Ser Val Arg Val Pro Thr Lys Pro Leu
85 90 95
Leu Glu Lys Ser Gly Arg Asn Ala Thr Lys Tyr Lys Val Arg Trp Arg
100 105 110
Asn Leu Gln Gln Cys Gln Thr Leu Asp Gly Arg Ile Ile Ile Ile Pro
115 120 125
Lys Asn His His Lys Thr Phe Pro Met Thr Val Glu Gly Glu Phe Ala
130 135 140
Ala Lys Arg Phe Ile Glu Glu Met Glu Arg Ser Lys Gly Glu Tyr Phe
145 150 155 160
Asn Phe Asp Ile Glu Val Arg Asp Leu Asp Tyr Leu Asp Ala Gln Leu
165 170 175
Arg Ile Ser Ser Cys Ile Arg Phe Gly Pro Val Leu Ala Gly Asn Gly
180 185 190
Val Leu Ser Lys Phe Leu Thr Gly Arg Ser Asp Leu Val Thr Pro Ala
195 200 205
Val Lys Ser Met Ala Trp Met Leu Gly Leu Trp Leu Gly Asp Ser Thr
210 215 220
Thr Lys Glu Pro Glu Ile Ser Val Asp Ser Leu Asp Pro Lys Leu Met
225 230 235 240
Glu Ser Leu Arg Glu Asn Ala Lys Ile Trp Gly Leu Tyr Leu Thr Val
245 250 255
Cys Asp Asp His Val Pro Leu Arg Ala Lys His Val Arg Leu His Tyr
260 265 270
Gly Asp Gly Pro Asp Glu Asn Arg Lys Thr Arg Asn Leu Arg Lys Asn
275 280 285
Asn Pro Phe Trp Lys Ala Val Thr Ile Leu Lys Phe Lys Arg Asp Leu
290 295 300
Asp Gly Glu Lys Gln Ile Pro Glu Phe Met Tyr Gly Glu His Ile Glu
305 310 315 320
Val Arg Glu Ala Phe Leu Ala Gly Leu Ile Asp Ser Asp Gly Tyr Val

				325						330								335
Val	Lys	Lys	Gly	Glu	Gly	Pro	Glu	Ser	Tyr	Lys	Ile	Ala	Ile	Gln	Thr			
			340					345					350					
Val	Tyr	Ser	Ser	Ile	Met	Asp	Gly	Ile	Val	His	Ile	Ser	Arg	Ser	Leu			
		355					360					365						
Gly	Met	Ser	Ala	Thr	Val	Thr	Thr	Arg	Ser	Ala	Arg	Glu	Glu	Ile	Ile			
	370					375					380							
Glu	Gly	Arg	Lys	Val	Gln	Cys	Gln	Phe	Thr	Tyr	Asp	Cys	Asn	Val	Ala			
	385				390					395					400			
Gly	Gly	Thr	Thr	Ser	Gln	Asn	Val	Leu	Ser	Tyr	Cys	Arg	Ser	Gly	His			
				405					410					415				
Lys	Thr	Arg	Glu	Val	Pro	Pro	Ile	Ile	Lys	Arg	Glu	Pro	Val	Tyr	Phe			
			420					425					430					
Ser	Phe	Thr	Asp	Asp	Phe	Gln	Gly	Glu	Ser	Thr	Val	Tyr	Gly	Leu	Thr			
		435					440					445						
Ile	Glu	Gly	His	Lys	Asn	Phe	Leu	Leu	Gly	Asn	Lys	Ile	Glu	Val	Lys			
	450					455					460							
Ser	Cys	Arg	Gly	Cys	Cys	Val	Gly	Glu	Gln	Leu	Lys	Ile	Ser	Gln	Lys			
	465				470					475					480			
Lys	Asn	Leu	Lys	His	Cys	Val	Ala	Cys	Pro	Arg	Lys	Gly	Ile	Lys	Tyr			
				485					490					495				
Phe	Tyr	Lys	Asp	Trp	Ser	Gly	Lys	Asn	Arg	Val	Cys	Ala	Arg	Cys	Tyr			
			500					505					510					
Gly	Arg	Tyr	Lys	Phe	Ser	Gly	His	His	Cys	Ile	Asn	Cys	Lys	Tyr	Val			
		515					520					525						
Pro	Glu	Ala	Arg	Glu	Val	Lys	Lys	Ala	Lys	Asp	Lys	Gly	Glu	Lys	Leu			
	530					535					540							
Gly	Ile	Thr	Pro	Glu	Gly	Leu	Pro	Val	Lys	Gly	Pro	Glu	Cys	Ile	Lys			
	545				550					555					560			
Cys	Gly	Gly	Ile	Leu	Gln	Phe	Asp	Ala	Val	Arg	Gly	Pro	His	Lys	Ser			
				565					570					575				
Cys	Gly	Asn	Asn	Ala	Gly	Ala	Arg	Ile	Cys									
			580					585										

<210> SEQ ID NO 12
<211> LENGTH: 1758
<212> TYPE: DNA
<213> ORGANISM: Saccharomyces cerevisiae
<220> FEATURE:
<221> NAME/KEY: misc_feature
<222> LOCATION: (1)..(1758)
<223> OTHER INFORMATION: Saccharomyces cerevisiae HO polynucleotide sequence

<400> SEQUENCE: 12

```
atgcttttctg aaaacacgac tattctgatg gctaacggtg aaattaaaga catcgcaaac
gtcacggcta actettacgt tatgtgcgca gatggctccg ctgcccgctg cataaatgtc
acacagggct atcagaaaat ctataataa cagcaaaaaa ccaaacacag agcttttgaa
ggtagaacctg gtagggttaga tcccaggcgt agaacagttt atcagcgtct tgcattacaa
tgtactgcag gtcataaatt gtcagtcagg gtcctacca aaccactgtt ggaaaaaagt
ggtagaaatg ccaccaaata taaagtgaga tggagaaatc tgcagcaatg tcagacgctt
gatggttagga taataataat tccaaaaaac catcataaga cattocccaat gacagttgaa
```

-continued

```

ggtgagtttg ccgcaaacg cttcatagaa gaaatggagc gctctaaagg agaataattc 480
aactttgaca ttgaagttag agatttgat tatcttgatg ctcaattgag aattttctagc 540
tgcataagat ttggtccagt actcgcagga aatggtgttt tatctaaatt tctcactgga 600
cgtagtgacc ttgtaactcc tgcgttaaaa agtatggctt ggatgcttg tctgtggtta 660
ggtgacagta caacaaaaga gccagaaatc tcagtagata gcttgatcc taagctaag 720
gagagtttaa gagaaaatgc gaaaatctgg ggtctctacc ttacggtttg tgacgatcac 780
gttccgctac gtgccaaca tgtaaggctt cattatggag atggtccaga tgaaaacagg 840
aagacaagga atttgaggaa aaataatcca ttctggaaag ctgtcacaat tttaaagttt 900
aaaagggatc ttgatggaga gaagcaaatc cctgaattta tgtacggcga gcatatagaa 960
gttcgtgaag cattcttagc cggcttgatc gactcagatg ggtacgttgt gaaaaagggc 1020
gaaggccctg aatcttataa aatagcaatt caaactgttt attcatccat tatggacgga 1080
attgtccata tttcaagatc tcttggtatg tcagctactg tgacgaccag gtcagctagg 1140
gaggaaatca ttgaaggaag aaaagtccaa tgtcaattta catacgactg taatgttgct 1200
gggggaacaa cttcacagaa tgttttgtca tattgtcgaa gtggtcacia aacaagagaa 1260
gttccgcaa ttataaaaag ggaaccgta tatttcagct tcacggatga tttccaggg 1320
gagagtactg tatatgggct tacgatagaa ggccataaaa atttcttgct tggcaacaaa 1380
atagaagtga aatcatgtcg aggctgctgt gtgggagaac agcttaaaat atcacaaaaa 1440
aagaatctaa aacactgtgt tgcttgctcc agaaaggga tcaagtattt ttataaagat 1500
tggagtggta aaaatcgagt atgtgctaga tgctatggaa gatacaaat cagcgggtcat 1560
cactgtataa attgcaagta tgtaccagaa gcacgtgaag tgaaaaaggc aaaagacaaa 1620
ggcgaaaaat tgggcattac gccgaaggt ttgccagta aaggaccaga gtgtataaaa 1680
tgtggcggaa tcttacagtt tgatgctgtc cgcgggcctc ataagagttg tggtacaac 1740
gcaggtgcgc gcatctgc 1758

```

```

<210> SEQ ID NO 13
<211> LENGTH: 13
<212> TYPE: DNA
<213> ORGANISM: Saccharomyces cerevisiae
<220> FEATURE:
<221> NAME/KEY: misc_feature
<222> LOCATION: (1) .. (13)
<223> OTHER INFORMATION: S. cerevisiae Ho recognition site in MATA

```

```

<400> SEQUENCE: 13

```

```

tttccgcaac agt 13

```

```

<210> SEQ ID NO 14
<211> LENGTH: 13
<212> TYPE: DNA
<213> ORGANISM: Saccharomyces cerevisiae
<220> FEATURE:
<221> NAME/KEY: misc_feature
<222> LOCATION: (1) .. (13)
<223> OTHER INFORMATION: S. cerevisiae Ho recognition site in MATA

```

```

<400> SEQUENCE: 14

```

```

ttcgcgcaac agt 13

```

-continued

```

<210> SEQ ID NO 15
<211> LENGTH: 11349
<212> TYPE: DNA
<213> ORGANISM: Artificial Sequence
<220> FEATURE:
<223> OTHER INFORMATION: Synthetic: pHRW40(Kan), artificial plasmid
        sequence

<400> SEQUENCE: 15

gaattcttat tacgatcctc gcgcccccta cccaccgtac tcgtcaattc caagggcac 60
ggtaaacatc tgctcaaaact cgaagtcggc catatccaga gcgcgcgtagg gggcggagtc 120
gtggggggta aatcccgac ccgggggaatc cccgtccccc aacatgtcca gatcgaaatc 180
gtctagcgcg tcggcatgcg ccctcgccac gtccctcgccg tctaagtga gctcgtcccc 240
caggctgaca tcggtcgggg gggccgtcga cagtctgcgc gtgtgtcccg cggggagaaa 300
ggacaggcgc ggagccgcca gccccgcctc ttcggggcg tcgctgcgcg ggagatcgag 360
caggccctcg atggtagacc cgtaatgtt ttctgtacgc gcgcggctgt acgcggaccc 420
actttcacat ttaagttgtt ttctaatcc gcataatgc aattcaaggc cgaataagaa 480
ggctggctct gcaccttggc gatcaaataa ttcgatatgt tgcgtaata atggcggcat 540
actatcagta gtagggtgtt cctttcttc tttagcgact tgatgctctt gttcttccaa 600
tacgcaacct aaagtaaagt gccccacagc gctgagtgc tataatgcat tctctagtga 660
aaaaccttgt tggcataaaa aggctaattg attttcgaga gtttcatact gttttctgt 720
aggccgtgta cctaaatgta cttttgctcc atcgcgatga cttagtaaag cacatctaaa 780
acttttagcg ttattacgta aaaaatcttg ccagctttcc cttctaaaag ggcaaaagtg 840
agtatggtgc ctatctaaca tctcaatggg taaggcgctg agcaaagccc gcttattttt 900
tacatgccaa tacaatgtag gctgctctac acctagcttc tgggcgagtt tacgggttgt 960
taaaccttcg attccgaccc cattaagcag ctctaagcgc ccgttaatca ctttactttt 1020
atctaatact gacatatgaa ttaattcggg ccgcggaggc tggatcggtc ccggtgtctt 1080
ctatggagggt caaaacagcg tggatggcgt ctccaggcga tctgacgggt cactaaacga 1140
gctctgctta tatagacctc ccaccgtaca cgccctaccg ccatttgcgt caatggggcg 1200
gagttgttac gacattttgg aaagtcctcg tgattttggt gccaaaacaa actcccattg 1260
acgtcaatgg ggtggagact tggaaatccc cgtgagtcaa accgctatcc acgcccattg 1320
atgtactgcc aaaaccgat caccatggta atagcgatga ctaatacgta gatgtactgc 1380
caagtaggaa agtcccataa ggctcatgtac tgggcataat gccaggcggg ccatttaccg 1440
tcattgacgt caataggggg cgtacttggc atatgataca cttgatgtac tgccaagtgg 1500
gcagtttagc gtaataactc caccattga cgtcaatgga aagtcctat tggcgttact 1560
atgggaacat acgtcattat tgacgtcaat gggcgggggg cgttgggcgg tcagccaggc 1620
gggccattta ccgtaagtta tgtaacgcgg aactccatat atgggctatg aactaatgac 1680
cccgtaattg attactatta ataactagtc aataatcaat gtcaacatgg cggtaatgtt 1740
ggacatgagc caataataat gtacatatta tgatatggat acaacgtatg caatgggcca 1800
agctcctcga gtaattcgcg ccacttctaa ataagcgaat ttcttatgat ttatgatgtt 1860
tattattaaa taagttataa aaaaaataag tgtatacaaa ttttaaagtg actcttaggt 1920
tttaaaacga aaattcttgt tcttgagtaa ctctttcctg taggtcaggt tgctttctca 1980

```

-continued

ggtatagcat gagtgcgctc ttattgacca cacctctacc ggcagatcaa ttcctcgatc	2040
gagtttacca ctccctatca gtgatagaga aaagtgaag tcgagtttac cactccctat	2100
cagtgataga gaaaagtga agtcgagttt accactccct atcagtgata gagaaaagt	2160
aaagtcgagt ttaccactcc ctatcagtga tagagaaaag tgaaagtcga gttaccact	2220
ccctatcagt gatagagaaa agtgaaagtc gagtttacca ctccctatca gtgatagaga	2280
aaagtgaag tcgagtttac cactccctat cagtgataga gaaaagtga agtcgagctc	2340
ggtaccctat ggcagtcgag tgctctgtat gtatataaaa ctcttgtttt cttctttct	2400
ctaaatattc tttccttata cattaggtcc tttgtagcat aaattactat acttctatag	2460
acacgcaaac acaaatcac acactaaatt accggatcaa ttcgggggaa tgctttctga	2520
aaacacgact attctgatgg ctaacgggta aattaaagac atcgcaaac tcacggctaa	2580
ctcttacgtt atgtgcgcag atggctccgc tgccgcgctc ataatgtca cacagggcta	2640
tcagaaaatc tataatatac agcaaaaaac caaacacaga gcttttgaag gtgaacctgg	2700
taggttagat ccagggcgta gaacagttta tcagcgtctt gcattacaat gtactgcagg	2760
tcataaattg tcagtcaggg tccttaccac accactgttg gaaaaagtg gtgaaatgc	2820
cacaaatat aaagtgatg ggagaaatct gcagcaatgt cagacgcttg atggtaggat	2880
aataataatt ccaaaaaacc atcataagac attcccaatg acagttgaag gtgagtttgc	2940
cgcaaacgc ttcatagaag aaatggagcg ctctaaagga gaattttca actttgacat	3000
tgaagttaga gatttggtt atcttgatgc tcaattgaga atttctagct gcataagatt	3060
tggccagta ctgcaggaa atgggtgttt atctaaattt ctactggac gtagtgacct	3120
tgtactcct gctgtaaaaa gtatggcttg gatgcttgg ctgtgggttag gtgacagtac	3180
aacaaaagag ccagaaatct cagtagatag ctgggatcct aagctaattg agagttaag	3240
agaaaatgag aaaatctggg gtctctacct tacggtttgt gacgatcacg ttcgctacg	3300
tgccaaacat gtaaggcttc attatggaga tggccagat gaaaacagga agacaaggaa	3360
tttgaggaaa aataatccat tctggaaagc tgtcacaatt ttaaagttta aaagggatct	3420
tgatggagag aagcaaatcc ctgaatttat gtacggcgag catatagaag ttcgtgaagc	3480
attcttagcc ggcttgatcg actcagatgg gtacgttgtg aaaaagggcg aaggccctga	3540
atcttataaa atagcaattc aaactgttta ttcattcatt atggacggaa ttgtccatat	3600
ttcaagatct cttggtatgt cagctactgt gacgaccagg tcagctaggg aggaaatcat	3660
tgaaggaaga aaagtccaat gtcaatttac atacgactgt aatgttgctg ggggaacaac	3720
ttcacagaat gttttgtcat attgtcgaag tggtcacaaa acaagagaag ttcgcccaat	3780
tataaaaagg gaacccgtat atttcagctt cacggatgat ttccagggtg agagtactgt	3840
atatgggctt acgatagaag gccataaaaa tttcttgctt ggcaacaaaa tagaagtga	3900
atcatgtcga ggctgctgtg tgggagaaca gcttaaaata tcacaaaaaa agaactctaa	3960
acactgtgtt gcttgtccca gaaagggaat caagtatttt tataaagatt ggagtggtaa	4020
aatcgagta tgtgctagat gctatggaag atacaaattc agcggctatc actgtataaa	4080
ttgcaagtat gtaccagaag cacgtgaagt gaaaaaggca aaagacaaag gcgaaaaatt	4140
gggcattacg ccggaagggt tgccagttaa aggaccagag tgtataaaat gtggcggaat	4200
cttacagttt gatgctgtcc gcgggcctca taagagttgt ggtaacaacg cagggtgcgcg	4260

-continued

catctgccgg atccccgggt taattaacgg tggaggtgga ggtggagggtg gaggtgaaca	4320
aaagctaato tccgaggaag acttgaacgg tgaacaaaaa ttaatctcag aagaagactt	4380
gaacggactc gacgggtgaac aaaagttgat ttctgaagaa gatttgaacg gtgaacaaaa	4440
gctaatactcc gaggaagact tgaacgggtga acaaaaatta atctcagaag aagacttgaa	4500
cggactcgac ggtgaacaaa agttgatttc tgaagaagat ttgaacgggtg aacaaaagct	4560
aatctccgag gaagacttga acgggtgaaca aaaattaatc tcagaagaag acttgaacgg	4620
actcgacggg gaacaaaagt tgatttctga agaagatttg aacgggtgaac aaaagctaat	4680
ctccgaggaa gacttgaacg gtgaacaaaa attaatctca gaagaagact tgaacggact	4740
cgacgggtgaa caaaagtga tttctgaaga agatttgaac ggtgaacaaa agctaacttc	4800
cgaggaagac ttgaacgggtg aacaaaaatt aatctcagaa gaagacttga acggactcga	4860
cgggtgaacaa aagttgattt ctgaagaaga tttgaacggg gaacaaaagc taatctccga	4920
ggaagacttg aacgggtgaac aaaaattaat caatcactag tgaattcgcg ccacttctaa	4980
ataagcgaat ttcttgaggg ccgcacatg taattagtta tgtcacgctt acattcacgc	5040
cctccccca catccgctct aaccgaaaag gaaggagtta gacaacctga agtctaggtc	5100
cctattttatt tttttatagt tatgttagta ttaagaacgt tatttatatt tcaaattttt	5160
cttttttttc tgtacagacg cgtgtacgca tgtaacatta tactgaaaac cttgcttgag	5220
aagggttttg gacgctcgaa ggctttaatt tgcggccaag cttggcgtaa tcatggtcat	5280
agctgtttcc tgtgtgaaat tgttatccgc tcacaattcc acacaacata cgagcggaa	5340
gcataaagtg taaagcctgg ggtgcctaata gaggtagcta actcacatta attgcgttgc	5400
gctcactgcc cgctttccag tcgggaaacc tgcgtgcca gctgcattaa tgaatcggcc	5460
aacgcgcggg gagaggcggg ttgcgtattg ggcgctcttc cgcttctctg ctcaactgact	5520
cgctgcgctc ggtcgctcgg ctgcggcgag cggtatcagc tcaactcaaag gcggtaatac	5580
ggttatccac agaatcaggg gataacgcag gaaagaacat gtgagcaaaa ggccagcaaa	5640
aggccaggaa ccgtaaaaag gccgcgttgc tggcgttttt ccataggctc cgcctccctg	5700
acgagcatca caaaaatcga cgctcaagtc agaggtggcg aaaccgcaca ggactataaa	5760
gataccaggc gtttccccct ggaagctccc tcgtgcgctc tcctgttccg accctgccgc	5820
ttaccggata cctgtccgcc tttctccctt cgggaagcgt ggcgctttct catagctcac	5880
gctgtaggta tctcagttcg gtgtaggctg ttcgctccaa gctgggctgt gtgcacgaac	5940
cccccgttca gcccgaccgc tgcgccttat ccggtaacta tcgtcttgag tccaaccggg	6000
taagacacga cttatcgcca ctggcagcag ccactggtaa caggattagc agagcgagg	6060
atgtaggcgg tgctacagag ttcttgaagt ggtggcctaa ctacggctac actagaagga	6120
cagtatttgg tatctgcgct ctgctgaagc cagttacctt cggaataaga gttggtagct	6180
cttgatccgg caaacaacc accgctggta gcgggtggtt ttttgtttgc aagcagcaga	6240
ttacgcgcag aaaaaaagga tctcaagaag atcctttgat cttttctacg gggctctgacg	6300
ctcagtggaa cgaaaactca cgtaaggga ttttgggtcat gagattatca aaaaggatct	6360
tcacctagat ctttttaaat taaaaatgaa gtttttaatc aatctaaagt atatatgagt	6420
aaacttggtc tgacagttac caatgcttaa tcagtgaggc acctatctca gcgatctgtc	6480
tatttcgttc atccatagtt gctgactcc ccgtcgtgta gataactacg atacgggagg	6540

-continued

gcttaccatc	tggccccagt	gctgcaatga	taccgcgaga	cccacgctca	ccggtccag	6600
atttatcagc	aataaaccag	ccagccggaa	gggcccagcg	cagaagtggg	cctgcaactt	6660
tatccgcctc	catccagtct	attaattgtt	gccgggaagc	tagagtaagt	agttccgcag	6720
ttaatagttt	gcgcaacggt	gttgccattg	ctacaggcat	cgtgggtgca	cgctcgctgt	6780
ttggtatggc	ttcattcagc	tccggttccc	aacgatcaag	gcgagttaca	tgatccccc	6840
tgttgtgcaa	aaaagcgggt	agtccttcg	gtcctccgat	cgttgtcaga	agtaagttgg	6900
ccgcagtggt	atcactcatg	gttatggcag	cactgcataa	ttctcttact	gtcatgccat	6960
ccgtaagatg	cttttctgtg	actggtgagt	actcaaccaa	gtcattctga	gaatagtgt	7020
tgccgagacc	gagttgtctt	tgcccggcgt	caatacggga	taataccgcg	ccacatagca	7080
gaactttaaa	agtgtctatc	attggaaaac	gttcttcggg	gcgaaaactc	tcaaggatct	7140
taccgctggt	gagatccagt	tcgatgtaac	ccactcgtgc	acccaactga	tcttcagcat	7200
cttttacttt	caccagcggt	tctgggtgag	caaaaacagg	aaggcaaaat	gccgcaaaaa	7260
aggggaataag	ggcgacacgg	aaatgttgaa	tactcatact	cttccttttt	caatattatt	7320
gaagcattta	tcagggttat	tgtctcatga	gcggatacat	atttgaatgt	atttagaaaa	7380
ataaacaaat	aggggttcgg	cgcacatttc	cccgaagaat	gccacctgac	gtctaagaaa	7440
ccattattat	catgacatta	acctataaaa	ataggcggtat	cacgaggccc	tttcgtcttc	7500
aagaattcag	ctgaagcttc	gtacgctgca	ggtcgacgga	tcccggggtt	aattaaggcg	7560
cgccagatct	gtttagcttg	ccttgctccc	gccgggtcac	ccggccagcg	acatggaggc	7620
ccagaatacc	ctccttgaca	gtcttgacgt	gcgcagctca	ggggcatgat	gtgactgtcg	7680
cccgtaacat	tagcccatc	atccccatgt	ataatcattt	gcctccatc	attttgatgg	7740
ccgcacggcg	cgaagcaaaa	attacggctc	ctcgtctgag	acctgcgagc	agggaaacgc	7800
tcccctcaca	gacgcgttga	attgtcccca	cgccgcgccc	ctgtagagaa	atataaaagg	7860
ttaggatttg	ccactgaggt	tcttctttca	tatacttcct	tttaaaatct	tgctaggata	7920
cagttctcac	atcacatccg	aacataaaca	acctggggtg	agggaaagac	tcacgtttcg	7980
agggcgcgat	tgaattccaa	catggatgct	gatttatatg	ggtataaatg	ggctcgcgat	8040
aatgtcgggc	aatcaggtgc	gacaatctat	cgattgtatg	ggaagcccga	tcgcgccagag	8100
ttgtttctga	aacatggcaa	aggtagcgtt	gccaatgatg	ttacagatga	gatggtcaga	8160
ctaaactggc	tgacggaatt	catgcctctt	ccgaccatca	agcattttat	ccgtactcct	8220
gatgatgcat	ggttactcac	cactgcgac	cccggcaaaa	cagcattcca	ggtagtagaa	8280
gaatatcctg	attcaggtga	aaatattgtt	gatgcgctgg	cagtgttctc	gcgcgggttg	8340
cattcgattc	ctgtttgtaa	ttgtcctttt	aacagcgatc	gcgtatttcg	tctcgctcag	8400
gcgcaatcac	gaatgaataa	cggtttggtt	gatgcgagtg	attttgatga	cgagcgtaat	8460
ggctggcctg	ttgaacaagt	ctggaaagaa	atgcataagc	ttttgccatt	ctcacgggat	8520
tcagtcgtca	ctcatggtga	tttctcactt	gataacctta	tttttgacga	ggggaaatta	8580
ataggttgta	ttgatgttgg	acgagtcgga	atcgagagcc	gataaccagga	tcttgccatc	8640
ctatggaact	gcctcgggtga	gttttctcct	tcattacaga	aacggctttt	tcaaaaatat	8700
ggatttgata	atcctgatat	gaataaattg	cagtttctatt	tgatgctcga	tgagtttttc	8760
taatcagtac	tgacaataaa	aagattcttg	ttttcaagaa	cttgtcattt	gtatagtttt	8820

-continued

tttatattgt	agttgttcta	ttttaatcaa	atgttagcgt	gatttatatt	ttttttcgcc	8880
tcgacatcat	ctgccagat	gcgaagttaa	gtgcgcagaa	agtaatatca	tgcgcaatc	8940
gtatgtgaat	gctggtcgct	atactgctgt	cgattcgata	ctaacgcgc	catccagtgt	9000
cgaaaacgag	ctcgaattca	tcgatgatat	cagatccact	agtggcctat	gcaattctca	9060
tgtttgacag	cttatcatcg	atcgctccaac	tgcatggaga	tgagtcgtgg	caagaatacc	9120
aagagttcct	cggtttgcca	gttattaaaa	gactcgattt	tccaaaagac	tgcaacatac	9180
tactcagtgc	agcttcacag	aaacctcatt	cgttttattcc	cttgtttgat	tcagaagcag	9240
gtgggacagg	tgaacttttg	gattggaact	cgatttctga	ctggggttga	aggcaagaga	9300
gccccgagag	cttacatttt	atgttagctg	gtggactgac	gccagaaaa	gttggtgatg	9360
cgcttagatt	aaatggcggt	attggtgttg	atgtaagcgg	agggtgtggag	acaaatgggtg	9420
taaaagactc	taaaaaata	gcaattttcg	tcaaaaatgc	taagaaatag	gttattactg	9480
agtagtattt	atttaagtat	tgtttggtga	cttgccctgca	agccttttga	aaagcaagca	9540
taaaagatct	aaacataaaa	tctgtaaaat	aacaagatgt	aaagataatg	ctaaatcatt	9600
tggctttttg	attgattgta	caggaaaaata	tacatcgag	ggggttgact	tttaccattt	9660
caccgcaatg	gaatcaaact	tgttgaagag	aatgttcaca	ggcgcatacg	ctacaatgac	9720
ccgattcttg	ctagcctttt	ctcggctctg	caaacaaccg	ccggcagctt	agtatataaa	9780
tacacatgta	catacctctc	tccgtatcct	cgtaatcatt	ttcttgattt	tatcgtcttt	9840
tcgctgtaaa	aactttatca	cacttatctc	aaatacactt	attaaccgct	tttactatta	9900
tcttctacgc	tgacagtaat	atcaaacagt	gacacatatt	aaacacagtg	gtttctttgc	9960
ataaacacca	tcagcctcaa	gtcgtcaagt	aaagatttcg	tgttcatgca	gatagataac	10020
aatctatatg	ttgataatta	gcgttgcttc	atcaatgcga	gatccgttta	accggaccct	10080
agtgcactta	ccccacgttc	ggccactgtt	gtgccgaaca	tgctccttca	ctattttaac	10140
atgtggaatt	atcgatgccg	gtgttattct	tgctatgata	ggccatcgaa	tgtaaaaggg	10200
aagattttatt	gttttgccct	ttaaagacga	atgttgaccg	tgaatgttta	aataattctc	10260
atgtttgaca	gcttatcatc	gaactctaag	agggtgatact	tatttactgt	aaaactgtga	10320
cgataaaaacc	ggaaggaaga	ataagaaaac	tcgaactgat	ctataatgcc	tattttctgt	10380
aaagagttta	agctatgaaa	gcctcggcat	tttgcccgct	cctaggtagt	gctttttttc	10440
caaggacaaa	acagtttctt	tttcttgagc	aggttttatg	tttcggtaat	cataaacaat	10500
aaataaatta	tttcatttat	gtttaaaaa	aaaaataaaa	aaagtatttt	aaatttttaa	10560
aaaagttgat	tataagcatg	tgaccttttg	caagcaatta	aattttgcaa	tttgtgattt	10620
taggcaaaag	ttacaatttc	tggtcgtgtt	aatatatgta	tgctaaagtg	aacttttaca	10680
aagtcgatat	ggacttagtc	aaaagaaatt	ttcttaaaaa	tatatagcac	tagccaattt	10740
agcacttctt	tatgagatat	attatagact	ttattaagcc	agatttggtg	attatatgta	10800
tttaccgggc	gaatcatgga	catacattct	gaaataggta	atattctcta	tggtgagaca	10860
gcatagataa	cctaggatac	aagttaaaag	ctagtactgt	tttgcaagtaa	tttttttctt	10920
ttttataaga	atgttaccac	ctaaataagt	tataaagtca	atagttaagt	ttgatatttg	10980
attgtaaaat	accgtaatat	atttgcatga	tcaaaaggct	caatgttgac	tagccagcat	11040
gtcaaccact	atattgatca	ccgatatatg	gacttcocaca	ccaactagta	atatgacaat	11100

-continued

```

aaattcaaga tattcttcat gagaatggcc cagcgatata tgcggtgtga aataccgcac 11160
agatgcgtaa ggagaaaata ccgcatacagg cgccattcgc cattcaggct gcgcaactgt 11220
tgggaagggc gatcggtgcg ggcctcttcg ctattacgcc agctggcgaa agggggatgt 11280
gctgcaaggc gattaagtgt ggtaacgcca gggttttccc agtcacgacg ttgtaaaacg 11340
acggccagt 11349

```

```

<210> SEQ ID NO 16
<211> LENGTH: 10914
<212> TYPE: DNA
<213> ORGANISM: Artificial Sequence
<220> FEATURE:
<223> OTHER INFORMATION: Synthetic: pHRW32(Zeo), Artificial plasmid
sequence

```

```

<400> SEQUENCE: 16

```

```

gaattcttat tacgatcctc gcgcccccta cccaccgtac tcgtcaattc caagggcatc 60
ggtaaacatc tgctcaaaact cgaagtcggc catatccaga gcgcgtagg gggcggagtc 120
gtggggggta aatcccgga cgggggaatc cccgtcccc aacatgtcca gatcgaaatc 180
gtctagcgcg tcggcatgcg ccatacgccac gtcctcgccg tctaagtgga gctcgteccc 240
caggctgaca tcggtcgggg gggccgtcga cagtctgcgc gtgtgtcccc cggggagaaa 300
ggacaggcgc ggagccgcca gccccgcctc ttcgggggcg tcgtcgtecg ggagatcgag 360
caggccctcg atggtagacc cgtaatgtt tttcgtacgc gcgcggctgt acgcggaacc 420
actttcacat ttaagttgtt tttctaatac gcatatgac aattcaaggc cgaataagaa 480
ggctggctct gcaccttggc gatcaataa ttcgatagct tgctgtaata atggcggcat 540
actatcagta gtaggtgtt cctttcttc tttagcgact tgatgctctt gttcttccaa 600
tacgcaacct aaagtaaaat gccccacagc gctgagtga tataatgcat tctctagtga 660
aaaaacctgt tggcataaaa aggctaattg attttcgaga gtttcatact gttttctctg 720
aggccgtgta cctaaatgta cttttgctcc atcgcgatga cttagtaaag cacatctaaa 780
acttttagcg ttattacgta aaaaatcttg ccagctttcc ccttctaaag ggcaaaagt 840
agtatggtgc ctatctaaca tctcaatggg taaggcgtcg agcaaaagccc gcttattttt 900
tacatgcaa tacaatgtag gctgctctac acctagcttc tggcgagtt tacgggttgt 960
taaaccttcg attccgccc cattaagcag ctctaatacg ccgttaatca ctttactttt 1020
atctaatac gacatatgaa ttaattcggg ccgcggaggg tggatcggtc ccggtgtctt 1080
ctatggaggc caaacacagc tggatggcgt ctccaggcga tctgacggtt cactaaacga 1140
gctctgctta tatagacctc ccaccgtaca cgcctaccgc ccatttgctg caatggggcg 1200
gagttgttac gacattttgg aaagtcctcg tgattttggt gccaaaacaa actcccattg 1260
acgtcaatgg ggtggagact tggaaatccc cgtgagtcac accgctatcc acgcccattg 1320
atgtactgcc aaaaccgat caccatggta atagcgatga ctaatacgt gatgtactgc 1380
caagtaggaa agtcccataa ggcatgtac tgggcataat gccaggcggg ccatttaccg 1440
tcattgacgt caataggggg cgtacttggc atatgataca cttgatgtac tgccaagtgg 1500
gcagtttagc gtaataactc caccattga cgtcaatgga aagtcctat tggcgttact 1560
atgggaacat acgtcattat tgacgtcaat gggcgggggt cgttggcgcg tcagccaggc 1620
gggccattta ccgtaagtta tgtaacgcgg aactccatat atgggctatg aactaatgac 1680

```

-continued

cccgtaattg attactatta ataactagtc aataatcaat gtcaacatgg cggtaatgtt	1740
ggacatgagc caatataaat gtacatatta tgatatggat acaacgtatg caatgggcc	1800
agctcctcga gtaattcgcg ccacttctaa ataagcgaat ttcttatgat ttatgatttt	1860
tattattaaa taagttataa aaaaaataag tgtatacaaa ttttaaagtg actcttaggt	1920
tttaaaacga aaattcttgt tcttgagtaa ctctttcctg taggtcaggt tgctttctca	1980
ggtatagcat gaggtcgctc ttattgacca cacctctacc ggcagatcaa ttctcgatc	2040
gagtttacca ctccctatca gtgatagaga aaagtgaag tcgagtttac cactccctat	2100
cagtgataga gaaaagtga agtcgagttt accactccct atcagtgata gagaaaagtg	2160
aaagtcgagt ttaccactcc ctatcagtga tagagaaaag tgaaagtcga gtttaccact	2220
ccctatcagt gatagagaaa agtgaaagtc gagtttacca ctccctatca gtgatagaga	2280
aaagtgaag tcgagtttac cactccctat cagtgataga gaaaagtga agtcgagctc	2340
ggtaccctat ggcgtgcatg tgctctgtat gtatataaaa ctcttgtttt cttcttttct	2400
ctaaatatct tttcttata cattaggtcc tttgtagcat aaattactat acttctatag	2460
acacgcaaac acaatacac aactaaatt accggatcaa ttcgggggaa tgctttctga	2520
aaacacgact attctgatgg ctaacggtga aattaaagac atcgcaaacg tcacggctaa	2580
ctcttacgtt atgtgcgcag atggctccgc tgcccgctc ataaatgtca cacagggcta	2640
tcagaaaatc tataatatac agcaaaaaac caaacacaga gcttttgaag gtgaacctgg	2700
taggttagat ccaggcgta gaacagttta tcagcgtctt gcattacaat gtactgcagg	2760
tcataaattg tcagtcaggg tcctaccaa accactgttg gaaaaagtg gtagaaatgc	2820
caccaaataa aaagttagat ggagaaatct gcagcaatgt cagacgcttg atggtaggat	2880
aataataatt ccaaaaaacc atcataagac attcccaatg acagttgaag gtgagtttgc	2940
cgcaaaacgc ttcatagaag aaatggagcg ctctaaagga gaattttca actttgacat	3000
tgaagttaga gatttggtat atcttgatgc tcaattgaga atttctagct gcataagatt	3060
tggtccagta ctgcaggaa atgggtgttt atctaaattt ctactggac gtagtacct	3120
tgtaactcct gctgtaaaaa gtatggcttg gatgcttggt ctgtggttag gtgacagtac	3180
aacaaaagag ccagaaatct cagtagatag cttggatcct aagctaattg agagttaaag	3240
agaaaatcgc aaaatctggg gtctctacct tacggtttgt gacgatcacg ttccgctacg	3300
tgccaaacat gtaaggcttc attatggaga tgggtccagat gaaaacagga agacaaggaa	3360
tttgaggaaa aataatccat tctggaaagc tgtcacaatt ttaaagttta aaagggatct	3420
tgatggagag aagcaaatcc ctgaatttat gtacggcgag catatagaag ttcgtgaagc	3480
attcttagcc ggcttgatcg actcagatgg gtacgttggtg aaaaagggcg aaggccctga	3540
atcttataaa atagcaattc aaactgttta ttcattccatt atggacggaa ttgtccatat	3600
ttcaagatct cttggtagt cagctactgt gacgaccagg tcagctaggg aggaaatcat	3660
tgaaggaaga aaagtccaat gtcaatttac atacgactgt aatgttgctg ggggaacaac	3720
ttcacagaat gttttgtcat attgtcgaag tggtcacaaa acaagagaag ttccgccaat	3780
tataaaaagg gaaccctgat atttcagctt cacggatgat ttccaggggtg agagtactgt	3840
atatgggctt acgatagaag gccataaaaa tttcttgctt ggcaacaaaa tagaagtga	3900
atcatgtcga ggctgctgtg tgggagaaca gcttaaaata tcacaaaaaa agaactctaa	3960

-continued

acactgtggt	gcttgtccca	gaaaggaat	caagtatttt	tataaagatt	ggagtggtaa	4020
aaatcgagta	tgtgctagat	gctatggaag	atacaaatc	agcggtcac	actgtataaa	4080
ttgcaagtat	gtaccagaag	cacgtgaagt	gaaaaaggca	aaagacaaag	gcgaaaaatt	4140
gggcattacg	cccgaagggt	tgccagttaa	aggaccagag	tgtataaaat	gtggcggaat	4200
cttacagttt	gatgctgtcc	gcgggcctca	taagagttgt	ggtaacaacg	caggtgcgcg	4260
catctgccgg	atccccgggt	taattaacgg	tggaggtgga	ggtggagggtg	gaggtgaaca	4320
aaagctaate	tccgaggaag	acttgaacgg	tgaacaaaa	ttaatctcag	aagaagactt	4380
gaacggactc	gacggtgaac	aaaagttgat	ttctgaagaa	gatttgaacg	gtgaacaaaa	4440
gctaatactcc	gaggaagact	tgaacgggtga	acaaaaatta	atctcagaag	aagacttgaa	4500
cggactcgac	gggtgaacaaa	agttgatttc	tgaagaagat	tgaaacgggtg	aacaaaagct	4560
aatctccgag	gaagacttga	acggtgaaca	aaaattaatc	tcagaagaag	acttgaacgg	4620
actcgacggt	gaacaaaagt	tgattttctga	agaagatttg	aacggtgaac	aaaagctaata	4680
ctccgaggaa	gacttgaacg	gtgaacaaaa	attaatctca	gaagaagact	tgaacggact	4740
cgacggtgaa	caaaagttga	tttctgaaga	agatttgaac	gggtgaacaaa	agctaattctc	4800
cgaggaagac	ttgaacgggtg	aacaaaaatt	aatctcagaa	gaagacttga	acggactcga	4860
cgggtgaacaa	aagttgattt	ctgaagaaga	tttgaacgggt	gaacaaaagc	taatctccga	4920
ggaagacttg	aacggtgaac	aaaaattaat	caatcactag	tgaattcgcg	ccacttctaa	4980
ataagcgaat	ttcttgaggg	ccgcatcatg	taattagtta	tgtcacgctt	acattcacgc	5040
cctcccccca	catccgctct	aaccgaaaag	gaaggagtta	gacaacctga	agtcaggtc	5100
cctatttatt	tttttatagt	tatgttagta	ttaagaacgt	tatttatatt	tcaaattttt	5160
cttttttttc	tgtacagacg	cgtgtacgca	tgtaacatta	tactgaaaac	cttgcttgag	5220
aaggtttttg	gacgctcgaa	ggctttaatt	tgcggccaag	cttggcgtaa	tcatggtcat	5280
agctgtttcc	tgtgtgaaat	tgttatccgc	tcacaattcc	acacaacata	cgagccggaa	5340
gcataaagtg	taaagcctgg	ggtgcctaata	gagtgagcta	actcacatta	attgctgtgc	5400
gctcactgcc	cgctttccag	tcgggaaacc	tgtcgtgcca	gctgcattaa	tgaatcggcc	5460
aacgcgcggg	gagaggcggt	ttgcgtattg	ggcgctcttc	cgcttcctcg	ctcactgact	5520
cgctgcgctc	ggctgttcgg	ctgcggcgag	cggtatcagc	tactcaaaag	gcggtaatac	5580
ggttatccac	agaatcaggg	gataacgcag	gaaagaacat	gtgagcaaaa	ggccagcaaa	5640
aggccaggaa	ccgtaaaaag	gccgcgttgc	tggcggtttt	ccataggtct	cgccccctg	5700
acgagcatca	caaaaatcga	cgctcaagtc	agaggtggcg	aaaccgcaca	ggactataaa	5760
gataccaggc	gtttccccct	ggaagctccc	tcgtgcgctc	tcctgttccg	accctgcgcg	5820
ttaccggata	cctgtccgcc	tttctccctt	cggaagcgt	ggcgctttct	catagctcac	5880
gctgtaggta	tctcagttcg	gtgtaggctg	ttcgctccaa	gctgggctgt	gtgcacgaac	5940
cccccgttca	gcccagaccg	tgccgcttat	ccggtaacta	tcgtcttgag	tccaaccggt	6000
taagacacga	cttatcgcca	ctggcagcag	ccactggtaa	caggattagc	agagcgagggt	6060
atgtaggcgg	tgtcacagag	ttcttgaagt	ggtggcctaa	ctacggctac	actagaagga	6120
cagtatttgg	tatctgcgct	ctgctgaagc	cagttacctt	cggaaaaaga	gttggttagct	6180
cttgatccgg	caaacaaacc	accgctggta	gcggtgggtt	ttttgtttgc	aagcagcaga	6240

-continued

ttacgcgcag	aaaaaaagga	tctcaagaag	atcctttgat	cttttctacg	gggtctgacg	6300
ctcagtggaa	cgaaaactca	cgtaaggga	ttttggcat	gagattatca	aaaaggatct	6360
tcacctagat	ccttttaaat	taaaaatgaa	gttttaaato	aatctaaagt	atatatgagt	6420
aaacttggtc	tgacagttac	caatgcttaa	tcagtggagg	acctatctca	gcgatctgtc	6480
tatttcgttc	atccatagtt	gcctgactcc	ccgtcgtgta	gataactacg	atacgggagg	6540
gcttaccatc	tggccccagt	gctgcaatga	taccgcgaga	cccacgctca	ccggctccag	6600
atztatcagc	aataaaccag	ccagccggaa	gggcgcgagc	cagaagtggg	cctgcaactt	6660
tatccgcctc	catccagtct	attaattggt	gccgggaagc	tagagtaagt	agttcgccag	6720
ttaatagttt	gcgcaacggt	gttgccattg	ctacaggcat	cgtaggtgtca	cgctcgtcgt	6780
ttggtatggc	ttcattcagc	tccggttccc	aacgatcaag	gcgagttaca	tgatccccc	6840
tgttgtgcaa	aaaagcgggt	agctccttcg	gtcctccgat	cgtagtcaga	agtaagttag	6900
ccgcagtgtt	atcactcatg	gttatggcag	cactgcataa	ttctcttact	gtcatgccat	6960
ccgtaagatg	cttttctgtg	actggtgagt	actcaaccaa	gtcattctga	gaatagtgt	7020
tgccgcgacc	gagttgctct	tgcccggtgt	caatacggga	taataccgag	ccacatagca	7080
gaactttaaa	agtgtctatc	attggaatac	gttcttcggg	gcgaaaactc	tcaaggatct	7140
taccgctgtt	gagatccagt	tcgatgtaac	ccactcgtgc	acccaactga	tcttcagcat	7200
cttttacttt	caccagcgtt	tctgggtgag	caaaaacagg	aaggcaaat	gccgcaaaaa	7260
aggggaataag	ggcgacacgg	aaatgttgaa	tactcatact	cttccttttt	caatattatt	7320
gaagcattta	tcagggttat	tgtctcatga	gcggatacat	atttgaatgt	atttagaaaa	7380
ataaacaat	aggggttccg	cgcacatttc	cccgaagaat	gccacctgac	gtctaagaaa	7440
ccattattat	catgacatta	acctataaaa	ataggcggtat	cacgaggccc	tttcgtcttc	7500
aagaattcag	ctgaagcttc	gtacgtgca	ggtcgacgga	tccccgggtt	aattaaggcg	7560
cgccagatct	gttttagctg	ccttgctccc	gccgggtcac	ccggccagcg	acatggaggc	7620
ccagaatacc	ctccttgaca	gtcttgacgt	gcgcagctca	ggggcatgat	gtgactgtcg	7680
cccgtagatt	tagcccatc	atcccatgt	ataatcattt	gcacccatc	attttgatgg	7740
ccgcacggcg	cgaagcaaaa	attacggctc	ctcgtctgag	acctgcgagc	agggaacgc	7800
tccctcaca	gacgcgttga	attgtcccca	cgccgcgccc	ctgtagagaa	atataaaagg	7860
ttaggatttg	ccactgaggt	tcttctttca	tatacttcct	tttaaaatct	tgctaggata	7920
cagttctcac	atcacatccg	aacataaaca	acctgggcta	agttgacctc	tgctgttcca	7980
gttttgactg	ctagagatgt	tgctggtgct	gttgaatttt	ggaccgacag	attgggtttt	8040
tccagagatt	tcgttgaaga	cgatttcgct	ggtgttggtc	gtgacgatgt	tacctgttcc	8100
atctccgcgc	ttcaagatca	agttgttcca	gataaactt	tggtctgggt	ttgggttaga	8160
ggttttagacg	agttgtatgc	tgaatggtct	gaagtcgttt	ctactaactt	cagagatgct	8220
tctggtccag	ctatgaccga	aattggtgaa	caacctggg	gtagagaatt	tgcttgaga	8280
gaccagccg	gtaattgtgt	tcatttcgtc	gccgaagaac	aagattgatc	agtactgaca	8340
ataaaaagat	tcttggtttc	aagaacttgt	catttgata	gtttttttat	attgtagttg	8400
ttctatttta	atcaaatgtt	agcgtgattt	atattttttt	tcgcctcgac	atcatctgcc	8460
cagatgcgaa	gttaagtgcg	cagaaagtaa	tatcatgcgt	caatcgtatg	tgaatgctgg	8520

-continued

tcgctatact gctgtcgatt cgatactaac gccgccatcc agtgtcgaaa acgagctcga	8580
attcatcgat gatatacagat ccactagtgg cctatgcaat tctcatgttt gacagcttat	8640
catcgatcgt ccaactgcat ggagatgagt cgtggcaaga ataccaagag ttctcgggtt	8700
tgccagttat taaaagactc gtattttccaa aagactgcaa catactactc agtgcagctt	8760
cacagaaaacc tcattcgttt attcccttgt ttgattcaga agcaggtggg acaggtgaac	8820
ttttggattg gaactcgatt tctgactggg ttggaaggca agagagcccc gagagcttac	8880
atthttatgtt agctgggtgga ctgacgccag aaaatgttgg tgatgcgctt agattaaatg	8940
gcgttatttg tgttgatgta agcggagggtg tggagacaaa tgggtgtaaaa gactctaaca	9000
aaatagcaaa tttcgtcaaa aatgctaaga aataggttat tactgagtag tatttattta	9060
agtattgttt gtgcacttgc ctgcaagcct tttgaaaagc aagcataaaa gatctaaaca	9120
taaaatctgt aaaataacaa gatgtaaaga taatgctaaa tcatttgggt ttttgattga	9180
ttgtacagga aaatatacat cgcagggggt tgacttttac catttcacccg caatggaatc	9240
aaactgttg aagagaatgt tcacaggcgc atacgctaca atgacccgat tcttgctagc	9300
cttttctcgg tcttgcaaac aaccgcgggc agcttagtat ataaatacac atgtacatac	9360
ctctctccgt atcctcgtaa tcattttctt gtattttatcg tcttttcgct gtaaaaaactt	9420
tatcacactt atctcaaata cacttattaa ccgcttttac tattatcttc tacgtgaca	9480
gtaatatcaa acagtgcac atattaaaca cagtggtttc tttgcataaa caccatcagc	9540
ctcaagtcgt caagtaaaga tttcgtgttc atgcagatag ataacaatct atatgttgat	9600
aattagcgtt gcctcatcaa tgcgagatcc gtttaaccgg accctagtgc acttacccca	9660
cgttcggtcc actgtgtgcc gaacatgctc cttcactatt ttaacatgtg gaattatcga	9720
tgccgggtgtt attcttgcta tgataggcca tcgaatgtta aagggaagat ttattgtttt	9780
gcccttttaa gacgaatttg gaccgtgaat gtttaataaa ttctcatgtt tgacagctta	9840
tcacgaact ctaagagggtg atacttattt actgtaaaac tgtgacgata aaaccggaag	9900
gaagaataag aaaactcgaa ctgatctata atgcctattt tctgtaaaga gtttaagcta	9960
tgaaagcctc ggcatttttg ccgctcctag gtagtgcttt ttttccaagg acaaaacagt	10020
ttctttttct tgagcagggtt ttatgtttcg gtaatcataa acaataaata aattatttca	10080
tttatgttta aaaataaaaa ataaaaaagt attttaaat tttaaaaag ttgattataa	10140
gcatgtgacc ttttgcaagc aattaaattt tgcaatttgt gatttttaggc aaaagttaca	10200
atttctggct cgtgtaatat atgtatgcta aagtgaactt ttacaaagtc gatatggact	10260
tagtcaaaag aaattttctt aaaaatatat agcactagcc aatttagcac ttctttatga	10320
gatataattat agactttatt aagccagatt tgtgtattat atgtatttac ccggcgaatc	10380
atggacatac attctgaaat aggtaatat ctctatgggtg agacagcata gataacctag	10440
gatacaagtt aaaagctagt actgttttgc agtaattttt ttctttttta taagaatgtt	10500
accacctaaa taagttataa agtcaatagt taagtttgat atttgattgt aaaataccgt	10560
aatatatttg catgatcaaa aggctcaatg ttgactagcc agcatgtcaa ccactatatt	10620
gatcaccgat atatggactt ccacaccaac tagtaatatg acaataaatt caagatatte	10680
ttcatgagaa tggcccagcg atatatgcgg tgtgaaatac cgcacagatg cgtaaggaga	10740
aaataccgca tcaggcgcca ttgccattc aggtgcgca actgttggga agggcgatcg	10800

-continued

gtgcgggcct cttegtatt acgccagctg gcgaaagggg gatgtgctgc aaggcgatta 10860

agttgggtaa cgccagggtt ttcccagtcg cgacgttgta aaacgacggc cagt 10914

1. A method of making a synthetic yeast cell comprising:
 - i) introducing a first polynucleotide comprising a first promoter operably connected to an HO polynucleotide encoding a yeast Ho protein, a first selectable marker cassette, and a first yeast origin of replication into a first yeast cell from a first yeast species or hybrid to produce a first transformed yeast cell,
 - ii) introducing a second polynucleotide comprising a second promoter operably connected to an HO polynucleotide encoding a yeast Ho protein, a second selectable marker cassette, and a second yeast origin of replication into a second yeast cell from a second yeast species or hybrid to produce a second transformed yeast cell,
 - iii) co-culturing the first transformed yeast cell with the second transformed yeast cell to produce a mating mixture,
 wherein the first selectable marker cassette and the second selectable marker cassette encode different selectable markers.
2. A method of making a synthetic yeast cell comprising:
 - i) introducing a first polynucleotide comprising a first promoter operably connected to an HO polynucleotide encoding a yeast Ho protein, a first selectable marker cassette, and a first yeast origin of replication into a first yeast cell from a first yeast species or hybrid to produce a first transformed yeast cell,
 - ii) introducing a second polynucleotide comprising a second selectable marker cassette, and a second yeast origin of replication into a second yeast cell from a second haploid yeast species to produce a second transformed yeast cell, and
 - iii) co-culturing the first transformed yeast cell with the second transformed yeast cell to produce a mating mixture,
 wherein the first selectable marker cassette and the second selectable marker cassette encode different selectable markers.
3. The method of claim 1, wherein the first yeast species or hybrid and the second yeast species or hybrid are different yeast species or hybrids.
4. The method of claim 1, further comprising selecting at least a portion of the mating mixture for the first selectable marker cassette and the second selectable marker cassette to select for a synthetic yeast hybrid.
5. The method of claim 4, further comprising culturing the synthetic yeast cell in non-selective media to produce a synthetic yeast cell lacking the first polynucleotide and/or the second polynucleotide.
6. The method of claim 4, further comprising selecting the synthetic yeast cell under conditions to optimize the synthetic yeast cell for a fermentation process.
7. The method of claim 1, wherein the first promoter and/or the second promoter comprise an inducible promoter.
8. The method of claim 7, further comprising inducing the inducible promoter prior to step (iii).
9. The method of claim 1, wherein the first yeast species or hybrid and the second yeast species or hybrid are in the family *Saccharomycetaceae*.
10. (canceled)
11. The method of claim 1, wherein the first yeast species and/or the second yeast species are selected from the group consisting of *Saccharomyces cerevisiae*, *Saccharomyces paradoxus*, *Saccharomyces mikatae*, *Saccharomyces arboricola*, *Saccharomyces jurei*, *Saccharomyces kudriavzevii*, *Saccharomyces uvarum*, and *Saccharomyces eubayanus*.
12. (canceled)
13. (canceled)
14. (canceled)
15. A synthetic yeast cell made by the method of claim 1 comprising 3 to 16 sets of yeast chromosomes.
16. (canceled)
17. (canceled)
18. (canceled)
19. The synthetic yeast cell of claim 15, wherein the sets of chromosomes are from 2 to 8 yeast species.
20. A synthetic yeast cell made by the method of claim 1 comprising chromosomes or chromosomal segments from 3 to 8 yeast species.
21. The synthetic yeast cell of claim 20, comprising chromosomes or chromosomal segments from 4-6 yeast species.
22. The synthetic yeast cell of claim 15, wherein the synthetic yeast cell is an ascomycete and the chromosomes or chromosomal segments are from an ascomycete.
23. The synthetic yeast cell of claim 15, wherein synthetic yeast cell is a *Saccharomyces* and the chromosomes or chromosomal segments are from at least one *Saccharomyces* species.
24. (canceled)
25. (canceled)
26. (canceled)
27. (canceled)
28. A kit comprising:
 - a first polynucleotide comprising a first promoter operably connected to an HO polynucleotide encoding a yeast Ho protein, a first selectable marker cassette, and a first yeast origin of replication, and
 - a second polynucleotide comprising a second promoter operably connected to an HO polynucleotide encoding a yeast Ho protein, a second selectable marker cassette, and a second yeast origin of replication,
 wherein the first selectable marker cassette and the second selectable marker cassette encode different selectable markers.
29. The kit of claim 28, wherein the wherein the first promoter and/or the second promoter comprise an inducible promoter.
30. (canceled)
31. The kit of claim 28, further comprising doxycycline, nourseothricin, hygromycin, G418, fluoroacetamide, antifolates, Zeocin, or phleomycin.

32. The kit of claim **28**, further comprising at least two different Saccharomycetaceae species.

33. (canceled)

* * * * *